

SAPTHA INNOVATIONS PVT LTD  
 Mktg. Off: #3/2, 19th Cross, 6th Main, Malleswaram, Bangalore - 560 055. Telefax: 91-80-23464013. Mobile:9538869214  
 E-Mail : saphsales6@sapthagroup.com,saphsales@sapthagroup.com. Web: www.sapthagroup.com  
 contact: 080-23560225 / 9538869214

Ref: SIPL/VIN/2022/SAP/IND/MAR/0592

Jindal Aluminium

Date:08-04-2022

Kind Attn:Mr. Rajgopal C. Sarda  
 Mob No : +91 9611-195-368

We thank you very much for your Enquiry for Grundfos Pumps/Accessories and our offer for the same is as under.

SL NO	DESCRIPTION	UNIT	QTY	UNIT PRICE	TOTAL PRICE
1)	GRUNDFOS MAKE VERTICAL MULTISTAGE CENTRIFUGAL PUMP WITH MOTOR TYPE-CRN10-16 A-FGJ-G-V-HQQV MODEL A98640348P11547 ,5.5KW, HEAD-163 METER.,RPM 2919, FLOW RATE 10 M3/HR,PMAX/TMAX-25/90, SUC/DIS 1.5/1.5 INCHES  QTY : 1 NO.				
	PUMP MODEL: CRN 10-16 A-FGJ-A-V-HQQV Q = 6 m <sup>3</sup> /h, H = 161 m, 5.5 KW, MOC SS, SS Impeller, 3 x 380-415 V , 50Hz, 2 Pole.	No's	1	1,95,748.00	1,95,748.00
TOTAL					
Forwarding & Packing Charges					1,500.00
Grand Total Inclusive of Transportation Charges to the site					1,97,248.00

*Rs. 1,76,178/-*  
*Each*

HSN CODE: Centrifugal Pumps: 84137010  
 HSN CODE: Control Panel : 85371000  
 HSN CODE:FLOAT SWITCH : 85369090  
 HSN CODE: TANK : 73101090

**TERMS & CONDITIONS:**

- Our scope is only supply of pumps .
- All electrical wiring, plumbing and necessary civil works will be in customer's scope
- Inspection of materials at site has to be done within 7 days from the date of supply of materials to the site be and any damages found has to be brought to our notice
- Warranty certificates will be sent with the pump sets/invoices.
- Warranty will be 12 months from the date of commissioning or 18 months from the date of supply whichever occur earlier on manufacturing defects only.
- Test Certificates will be on chargeable basis per pump/per system basis.
- Motor is Grundfos Standard execution TEFC Motor.
- Performance curve with technical data sheet and dimensional details enclosed herewith.
- Unloading of materials at site will be in customer's scope.

**TERMS & CONDITIONS:**

- Prices : Ex-Our warehouse Bangalore.
- Taxes : Extra GST as Applicable, Currently 12% for pumps and 18% for Accessories.
- Delivery : 2-4 weeks from the date of receipt of your technically and commercially clear order.
- Payment : 50% advance with the purchase order and 50% against proforma before despatch of materials to site.
- Transport & handling charges ,extra to site or warehouse.
- Validity : 30 Days.
- Order cancellation charges due to change in specifications , delay in project, site not ready etc ; 30% of the total value will be charged
- If the pumps are not lifted after the stipulated time of readiness of pumps, then the storage charges as per our Grundfos principal policy on weekly basis will be charged
- Once the order is released on to Saptha , the order will be taken up for processing only after the manufacturing clearance is confirmed from your end.

We trust, our offer is inline with your requirements and we now look forward to receive your valuable order at the earliest.

Yours faithfully  
 For SAPTHA INNOVATIONS PVT.LTD,  
 VINESH P

*Mr. Mowanthi*  
*discussed with Mr. Mowanthi*  
*and agreed above*  
*rate*  
*08/04/22*

**CHECK LIST**

*Discounted Rate as above*

*Incl*

*Freight*

*Rs 3000/-*

*1957: 12% Ex-warehouse*

*100% Against*

*Proforma Invoice before*

*disp. Ex-warehouse*

*Warranty: 12 months from the*

*date of receipt of material*

*to warehouse*



Qty.	Description
------	-------------

1 CRN 10-16 A-FGJ-A-V-HQQV



Note! Product picture may differ from actual product

Product No.: 96501398

Vertical, multistage centrifugal pump with inlet and outlet ports on same the level (inline). Pump materials in contact with the liquid are in high-grade stainless steel. A cartridge shaft seal ensures high reliability, safe handling, and easy access and service. Power transmission is via a rigid split coupling. Pipe connection is via combined DIN-ANSI-JIS flanges.

The pump is fitted with a 3-phase, fan-cooled asynchronous motor.

### Further product details

Steel, cast iron and aluminium components have an epoxy-based coating made in a cathodic electro-deposition (CED) process.

CED is a high-quality dip-painting process where an electrical field around the products ensures deposition of paint particles as a thin, well-controlled layer on the surface.

An integral part of the process is a pretreatment.

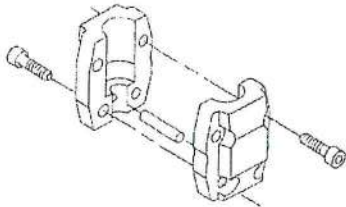
The entire process consists of these elements:

- 1) Alkaline-based cleaning.
- 2) Zinc phosphating.
- 3) Cathodic electro-deposition.
- 4) Curing to a dry film thickness 18-22 my m.

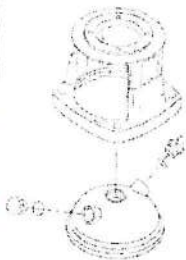
The colour code for the finished product is NCS 9000/RAL 9005.

### Pump

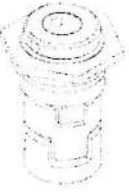
A standard split coupling connects the pump and motor shaft. It is enclosed in the pump head/motor stool by means of two coupling guards.



The pump head and flange for motor mounting is made in one piece (cast iron). The pump head cover is a separate component (stainless steel). The pump head has a combined 1/2" priming plug and vent screw.

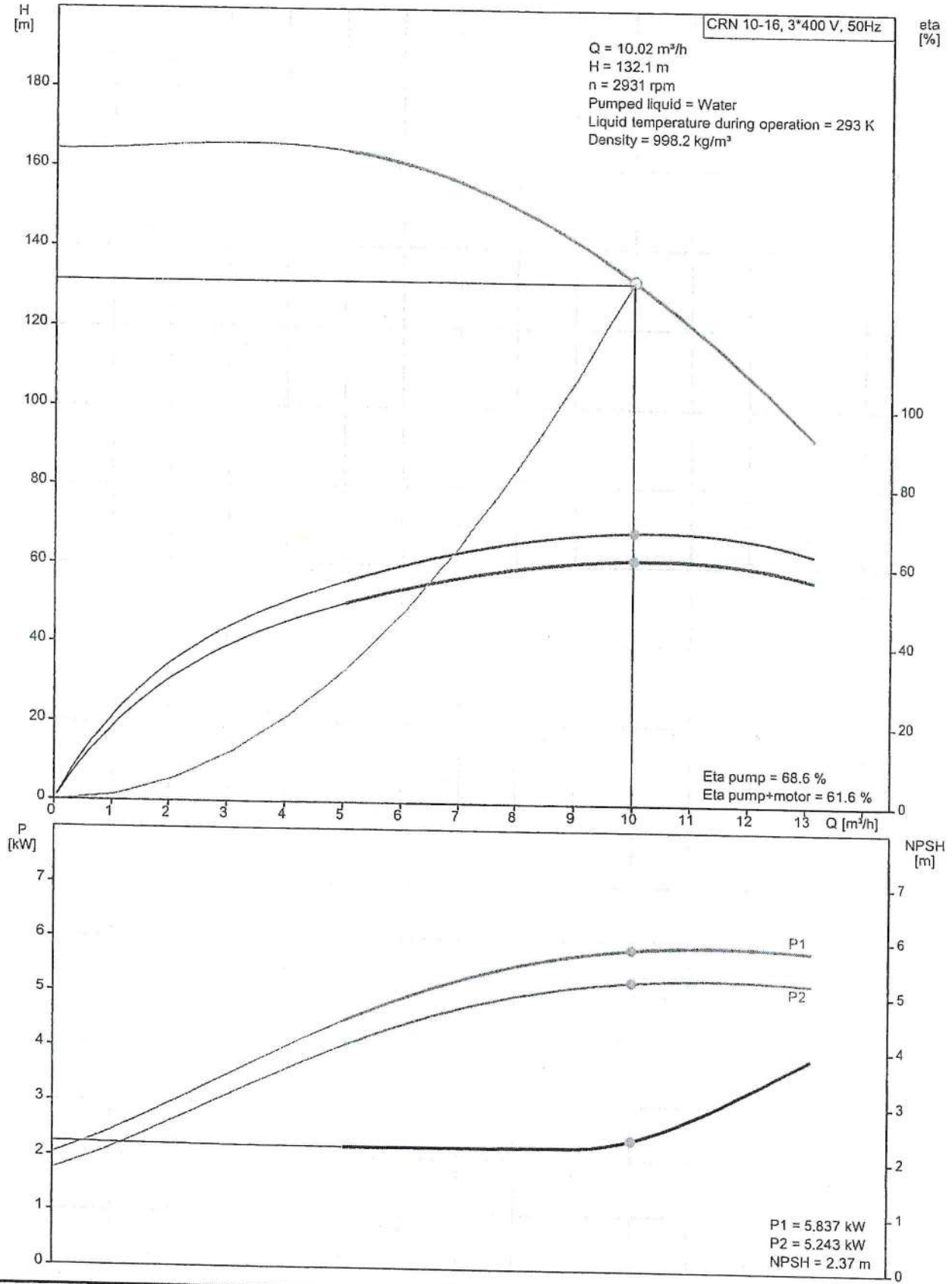


The pump is fitted with a balanced O-ring seal unit with a rigid torque-transmission system. This seal type is assembled in a cartridge unit which makes replacement safe and easy.

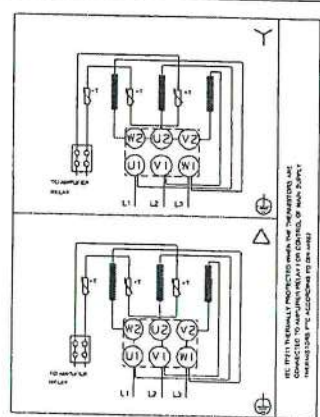
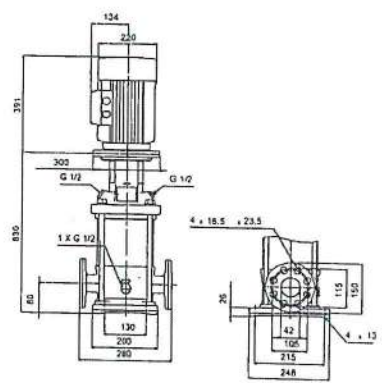
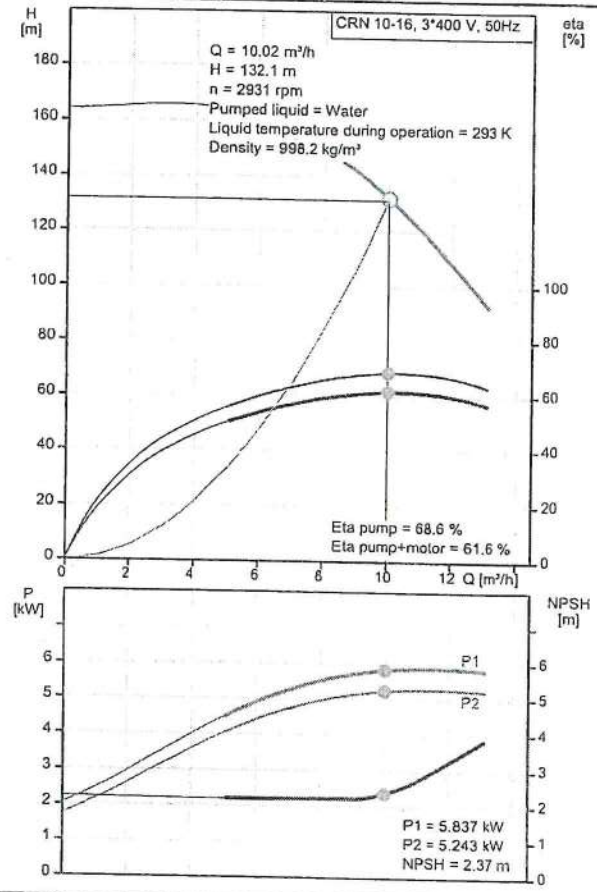
Qty.	Description
	<p>Due to the balancing, this seal type is suitable for high-pressure applications.</p> <p>The cartridge construction also protects the pump shaft from possible wear from a dynamic O-ring between pump shaft and shaft seal.</p> <p>Seal faces:</p> <ul style="list-style-type: none"> <li>• Rotating seal ring material: silicon carbide (SiC)</li> <li>• Stationary seat material: silicon carbide (SiC)</li> </ul> <p>This material pairing is used where higher corrosion resistance is required. The high hardness of this material pairing offers good resistance against abrasive particles.</p> <p>Secondary seal material: FKM (fluorocarbon rubber)</p> <p>FKM has excellent resistance to oils and chemicals. Above 90 °C, FKM should only be used in media without water.</p>  <p>The shaft seal is screwed into the pump head.</p> <p>The chambers and impellers are made of stainless-steel sheet. The chambers are provided with a PTFE neck ring offering improved sealing and high efficiency. The impellers have smooth surfaces, and the shape of the blades ensure a high efficiency.</p> <p>The pump has a stainless steel base mounted on a separate base plate.</p> <p>This base and base plate are kept in position by the tension of the staybolts which hold the pump together.</p> <p>The outlet side of the base has a combined drain plug and bypass valve.</p> <p>The pump is secured to the foundation by four bolts through the base plate.</p> <p>The flanges and base are cast in one piece and prepared for connection by means of DIN, ANSI or JIS.</p> <p><b>Motor</b></p> <p>The motor is a totally enclosed, fan-cooled motor with principal dimensions to IEC and DIN standards. The motor is flange-mounted with free-hole flange (FF).</p> <p>Motor-mounting designation in accordance with IEC 60034-7: IM B 5 (Code I) / IM 3001 (Code II).</p> <p>Electrical tolerances comply with IEC 60034.</p> <p>The motor efficiency is classified as IE3 in accordance with IEC 60034-30-1.</p> <p>The motor has thermistors (PTC sensors) in the windings in accordance with DIN 44081/DIN 44082. The protection reacts to both slow- and quick-rising temperatures, e.g. constant overload and stalled conditions.</p> <p>Thermal switches must be connected to an external control circuit in a way which ensures that the automatic reset cannot cause accidents. The motors must be connected to a motor-protective circuit breaker according to local regulations.</p> <p>The motor can be connected to a variable speed drive for adjustment of pump performance to any duty point. Grundfos CUE offers a range of variable speed drives. Please find more information in Grundfos Product Center.</p> <p><b>Technical data</b></p> <p>Liquid:</p> <p>Pumped liquid: Water</p> <p>Liquid temperature range: 253 .. 363 K</p> <p>Selected liquid temperature: 293 K</p> <p>Density: 998.2 kg/m<sup>3</sup></p> <p>Technical:</p> <p>Pump speed on which pump data are based: 2919 rpm</p> <p>Actual calculated flow: 10.02 m<sup>3</sup>/h</p> <p>Resulting head of the pump: 132.1 m</p> <p>Pump orientation: Vertical</p> <p>Shaft seal arrangement: Single</p> <p>Code for shaft seal: HQQV</p> <p>Approvals: CE,EAC,UKCA,SEPRO</p>

Qty.	Description
	<p>Approvals for drinking water: WRAS</p> <p>Curve tolerance: ISO9906:2012 3B</p> <p>Materials:</p> <p>Base: Stainless steel EN 1.4408 AISI 316</p> <p>Impeller: Stainless steel EN 1.4401 AISI 316</p> <p>Bearing: SIC</p> <p>Installation:</p> <p>t max amb: 333 K</p> <p>Maximum operating pressure: 2500 kPa</p> <p>Max pressure at stated temp: 25 bar / 90 °C 25 bar / -20 °C</p> <p>Type of connection: DIN / ANSI / JIS</p> <p>Size of inlet connection: DN 40</p> <p>Size of outlet connection: DN 40</p> <p>Pressure rating for connection: PN 25</p> <p>Flange rating inlet: 300 lb</p> <p>Flange size for motor: FF265</p> <p>Electrical data:</p> <p>Motor standard: IEC</p> <p>Motor type: 132SC</p> <p>IE Efficiency class: IE3</p> <p>Rated power - P2: 5.5 kW</p> <p>Power (P2) required by pump: 5.5 kW</p> <p>Mains frequency: 50 Hz</p> <p>Rated voltage: 3 x 380-415D V</p> <p>Rated current: 11 A</p> <p>Starting current: 1080-1180 %</p> <p>Cos phi - power factor: 0.87-0.82</p> <p>Rated speed: 2920-2940 rpm</p> <p>Efficiency: IE3 89,2%</p> <p>Motor efficiency at full load: 89.2 %</p> <p>Motor efficiency at 3/4 load: 90.0 %</p> <p>Motor efficiency at 1/2 load: 89.6 %</p> <p>Number of poles: 2</p> <p>Enclosure class (IEC 34-5): 55 Dust/Jetting</p> <p>Insulation class (IEC 85): F</p> <p>Motor No: 85U17417</p> <p>Controls:</p> <p>Frequency converter: NONE</p> <p>Others:</p> <p>Minimum efficiency index, MEI ≥: 0.70</p> <p>Net weight: 96 kg</p> <p>Gross weight: 118 kg</p> <p>Shipping volume: 0.321 m³</p>

## 96501398 CRN 10-16 A-FGJ-A-V-HQQV 50 Hz



Description	Value
<b>General information:</b>	
Product name:	CRN 10-16 A-FGJ-A-V-HQQV
Product No:	96501398
EAN number:	5700396221410
Price:	
<b>Technical:</b>	
Pump speed on which pump data are based:	2919 rpm
Actual calculated flow:	10.02 m <sup>3</sup> /h
Resulting head of the pump:	132.1 m
Maximum head:	163 m
Stages:	16
Impellers:	16
Number of reduced-diameter impellers:	0
Low NPSH:	N
Pump orientation:	Vertical
Shaft seal arrangement:	Single
Code for shaft seal:	HQQV
Approvals:	CE, EAC, UKCA, SEPRO
Approvals for drinking water:	WRAS
Curve tolerance:	ISO9906:2012 3B
Pump version:	A
Model:	A
<b>Materials:</b>	
Base:	Stainless steel
Base:	EN 1.4408
Base:	AISI 316
Impeller:	Stainless steel
Impeller:	EN 1.4401
Impeller:	AISI 316
Material code:	A
Code for rubber:	V
Bearing:	SIC
<b>Installation:</b>	
t max amb:	333 K
Maximum operating pressure:	2500 kPa
Max pressure at stated temp:	25 bar / 90 °C
Max pressure at stated temp:	25 bar / -20 °C
Type of connection:	DIN / ANSI / JIS
Size of inlet connection:	DN 40
Size of outlet connection:	DN 40
Pressure rating for connection:	PN 25
Flange rating inlet:	300 lb
Flange size for motor:	FF265
Connect code:	FGJ
<b>Liquid:</b>	
Pumped liquid:	Water
Liquid temperature range:	253 .. 363 K
Selected liquid temperature:	293 K
Density:	998.2 kg/m <sup>3</sup>
<b>Electrical data:</b>	
Motor standard:	IEC
Motor type:	132SC
IE Efficiency class:	IE3
Rated power - P2:	5.5 kW
Power (P2) required by pump:	5.5 kW
Mains frequency:	50 Hz
Rated voltage:	3 x 380-415D V





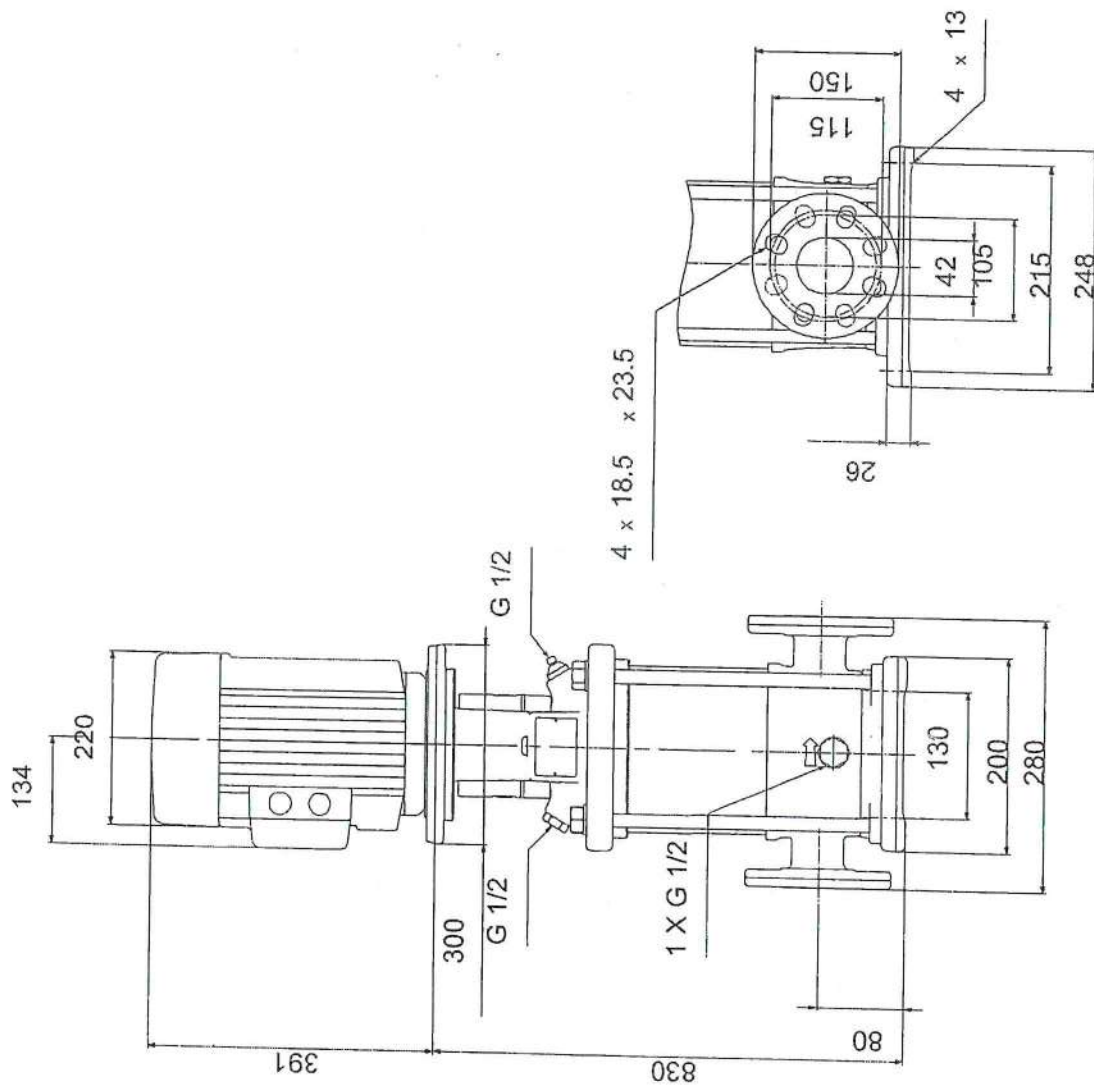
Company name: Industrial sales  
Created by:  
Phone:

Date: 08/04/2022

Description	Value
Rated current:	11 A
Starting current:	1080-1180 %
Cos phi - power factor:	0.87-0.82
Rated speed:	2920-2940 rpm
Efficiency:	IE3 89,2%
Motor efficiency at full load:	89.2 %
Motor efficiency at 3/4 load:	90.0 %
Motor efficiency at 1/2 load:	89.6 %
Number of poles:	2
Enclosure class (IEC 34-5):	55 Dust/Jetting
Insulation class (IEC 85):	F
Built-in motor protection:	PTC
Motor No:	85U17417
<b>Controls:</b>	
Frequency converter:	NONE
<b>Others:</b>	
Minimum efficiency index, MEI ≥:	0.70
Net weight:	96 kg
Gross weight:	118 kg
Shipping volume:	0.321 m <sup>3</sup>



## 96501398 CRN 10-16 A-FGJ-A-V-HQQV 50 Hz



Note! All units are in [mm] unless others are stated.  
 Disclaimer: This simplified dimensional drawing does not show all details.



Company name: Industrial sales

Created by:

Phone:

Date:

08/04/2022

Spare parts CRN 10-16, Product No. 96501398

Produced After 1152 (production year and week number)

Pos	Description	Annotation	Classification Data	Part no.	Qty.	Unit
-	Kit, Chamber stack			96491732	1	pcs
- 80	Chamber stack					1
- 3	Top intermediate chamber					
	Guide vane					
	Cover plate					
3	Top intermediate chamber					
- 4a	Intermediate chamber cpl.					
	Sand Lifter					
	Guide cup					
	Bearing plate					
	Guide vane					
3	Intermediate chamber					
45	Neck ring cpl.					
47	Bearing bush					
65	Retainer					
- 4	Intermediate chamber cpl.					
	Sand Lifter					
	Guide cup					
	Guide vane					
	Cover plate					
3	Intermediate chamber					
45	Neck ring cpl.					
65	Retainer					
26a	Strap cpl.					
26.c	Washer		Designation: DIN 125A Thickness: 1,6			
26.b	Hex head screw					
44b	Inlet part					
- 44a	Inlet part cpl.					
	Inlet part					
45	Neck ring cpl.					
65	Retainer					
47a	Bearing ring					
49	Impeller cpl.					
- 51	Shaft, spline, cpl.					
	Bar					
62	Stop ring					
64c	Spacer					
64a	Spacing bush		Length (mm): 9.00			
64.d	Spacer					
64	Spacing pipe		Length (mm): 29,05			
66	Wedge lock washer					
67	Lock nut		Thread: M8			
69	Spacing bush		Length (mm): 18.00			
-	Kit, Coupling			96511351	1	pcs
	Adjusting fork					1
- 8	Coupling					1
9	Hex socket head cap screw		Designation: DIN 912 Length (mm): 25 Thread: M10			
10a	Coupling half					
10	Shaft pin		Diameter: 5 Length (mm): 26			

Pos	Description	Annotation	Classification	Data	Part no.	Qty.	Unit
-	Kit, Coupling guard				96509613	1	pcs
7a	Combi Slot Torx screw					4	
7	Coupling guard					2	
-	Kit, Gaskets				96509610	1	pcs
	Gasket					2	
37	O-ring			Material type: FKM		2	
38	O-ring			Diameter: 5,3		1	
				Material type: FKM			
				Thickness: 2,4			
38	O-ring			Diameter: 16,3		1	
				Material type: FKM			
				Thickness: 2,4			
38	O-ring			Diameter: 16,3		2	
				Material type: FKM			
				Thickness: 2,4			
39	O-ring					2	
60	Spring					4	
415	Gasket			Internal diameter: 44		2	
				Outer diameter: 60			
				Thickness: 2			
441b	Gasket			Internal diameter: 49		2	
				Outer diameter: 92			
				Thickness: 2			
-	Kit, Plug				96511312	1	pcs
-	18 Air vent screw					1	
	Spindle						
	Plug						
25a	Drain plug					1	
25	Plug					1	
38	O-ring					1	
38	O-ring					1	
38	O-ring					2	
38	O-ring			Diameter: 5,3		1	
				Material type: FKM			
				Thickness: 2,4			
38	O-ring			Diameter: 16,3		1	
				Material type: FKM			
				Thickness: 2,4			
38	O-ring			Diameter: 16,3		2	
				Material type: FKM			
				Thickness: 2,4			
-	Kit, Shaft seal HQQV				96511845	1	pcs
105	Shaft seal			Material type: HQQV		1	
-	Kit, Wear parts				96511925	1	pcs
-	4a Intermediate chamber cpl.					3	
	Sand Lifter						
	Guide cup						
	Bearing plate						
	Guide vane						
3	Intermediate chamber						
45	Neck ring cpl.						
47	Bearing bush						
65	Retainer						
26c	Washer			Designation: DIN 125A		2	
				Thickness: 1,6			
26b	Hex head screw					2	
45	Neck ring cpl.					19	
47a	Bearing ring					3	
62	Retaining ring					1	



Company name: Industrial sales

Created by:

Phone:

Date: 08/04/2022

Pos	Description	Annotation	Classification Data	Part no.	Qty.	Unit
64d	Spacer				3	
64c	Spacer				1	
64a	Spacing bush		Length (mm): 9.00		3	
65	Retainer				19	
66	Wedge lock washer				1	
67	Lock nut		Thread: M8		1	
-	Motor				1	pcs
-	Kit, Bearing cpl.			96279803	1	
111	Ball bearing		Designation: 6206.2Z.C3.SYN			
153	Angular-contact bearing					
157	O-ring		Diameter: 62 Material type: NBR Thickness: 3			
158	Waved washer					
-	Kit, End shield			96279790	1	
156a	End shield					
157	O-ring		Diameter: 62 Material type: NBR Thickness: 3			
158	Waved washer					
159a	Seal ring					
-	Kit, Eyebolt			96279825	1	
189	Eyebolt					
-	Kit, Fan			96279758	1	
156	Fan					
159c	Seal ring					
159a	Seal ring					
-	Kit, Fan cover			96279756	1	
151b	Label					
151	Fan cover					
152	Pan head thread forming screw					
-	Kit, Flange			96279784	1	
156b	Flange					
159.c	Seal ring					
186	Drain plug					
-	Kit, Retaining ring			96279801	1	
187	Retaining ring					
188	Retaining ring					
-	Kit, Shaft seal			96279764	1	
159d	Seal ring					
159c	Seal ring					
-	Kit, Staybolts			96279793	1	
181	Pan head staybolt					
-	Kit, Terminal board			96279769	1	
	Bracket cpl.					
163	Hex socket head screw					
173a	Base					
173	Pan head thread forming screw					
176	Slot cheese head screw		Designation: COMBI TORX T25 Designation: COMBI TORX T25 Length (mm): 10 Thread: M5			
176	Terminal					
176	Connecting piece					
176	Wire clamp					
176	Terminal board					
177	Pan head screw					
-	Kit, Terminal box			96279772	1	
164	Terminal box cover w/gasket					
166	Pan head thread forming screw					



Company name: Industrial sales  
 Created by:  
 Phone:

Date: 08/04/2022

Pos	Description	Annotation	Classification	Data	Part no.	Qty.	Unit
-	Motor						
-	Kit, Bearing cpl.				96279803	1	pcs
111	Ball bearing						
153	Angular-contact bearing			Designation: 6206.2Z.C3.SYN			
157	O-ring			Diameter: 62			
				Material type: NBR			
				Thickness: 3			
158	Waved washer						
-	Kit, End shield				96279790	1	
156a	End shield						
157	O-ring			Diameter: 62			
				Material type: NBR			
				Thickness: 3			
158	Waved washer						
159a	Seal ring						
-	Kit, Eyebolt				96279825	1	
189	Eyebolt						
-	Kit, Fan				96279758	1	
156	Fan						
159c	Seal ring						
159a	Seal ring						
-	Kit, Fan cover				96279756	1	
151b	Label						
151	Fan cover						
152	Pan head thread forming screw						
-	Kit, Flange				96279784	1	
156b	Flange						
159.c	Seal ring						
186	Drain plug						
-	Kit, Retaining ring				96279801	1	
187	Retaining ring						
188	Retaining ring						
-	Kit, Shaft seal				96279764	1	
159d	Seal ring						
159c	Seal ring						
-	Kit, Staybolts				96279793	1	
181	Pan head staybolt						
-	Kit, Terminal board				96279769	1	
	Bracket cpl.						
163	Hex socket head screw						
173a	Base						
173	Pan head thread forming screw						
176	Slot cheese head screw			Designation: COMBI TORX T25			
				Designation: COMBI TORX T25			
				Length (mm): 10			
				Thread: M5			
176	Terminal						
176	Connecting piece						
176	Wire clamp						
176	Terminal board						
177	Pan head screw						
-	Kit, Terminal box				96279772	1	
164	Terminal box cover w/gasket						
166	Pan head thread forming screw						
1a	Pump head				98914854	1	pcs
1	Flange				99104283	1	pcs
2	Pump cover				98481138	1	pcs
+ 3	Top intermediate chamber				98371084	1	pcs
+ 4a	Intermediate chamber cpl.				96538854	3	pcs

Pos	Description	Annotation	Classification Data	Part no.	Qty.	Unit
+ 4a	Intermediate chamber cpl.			98371088	3	pcs
- 4	Intermediate chamber cpl.			96538841	12	pcs
3	Intermediate chamber			98371064	1	
45	Neck ring cpl.			96538856	1	
+ 4	Intermediate chamber cpl.			98371086	12	pcs
6	Base			98892305	1	pcs
10	Shaft pin		Diameter: 5	96536473	1	pcs
10	Shaft pin		Length (mm): 26 Diameter: 5	96587588	1	pcs
+ 18	Air vent screw		Length (mm): 26	96547461	1	pcs
+ 18	Air vent screw			95061351	1	pcs
25	Plug			96536013	1	pcs
26a	Strap cpl.			98969439	2	pcs
26.c	Washer			99262704	2	pcs
26.c	Washer		Designation: DIN 125A Thickness: 1,6	99886930	2	pcs
26	Staybolt		Designation: DIN 125A Thickness: 1,6	98982886	4	pcs
28	Hex head screw		Length (mm): 30	92673889	4	pcs
32	Washer		Thread: M12	99944260	4	pcs
36	Nut		Designation: DIN 125 A2 Internal diameter: 17 Outer diameter: 30 Thickness: 3	99944257	4	pcs
37	O-ring		Thread: M16	96538874	2	pcs
37a	O-ring		Material type: FKM	96538857	1	pcs
38	O-ring		Diameter: 5,3	99198789	1	pcs
38	O-ring		Material type: FKM Thickness: 2,4	99198813	2	pcs
38	O-ring		Diameter: 16,3	99412883	2	pcs
38	O-ring		Material type: FKM Thickness: 2,4			
44b	Inlet part		Diameter: 16,3	98814593	1	pcs
+ 44a	Inlet part cpl.		Thickness: 2,4	98890953	1	pcs
47a	Bearing ring			96538795	3	pcs
49	Impeller cpl.			98459841	16	pcs
+ 51	Shaft, spline, cpl.			98368641	1	pcs
55	Outer sleeve			98812645	1	pcs
56	Base plate			98824711	1	pcs
60	Spring			96538964	4	pcs
64c	Spacer			97980241	1	pcs
64a	Spacing bush		Length (mm): 9.00	96538950	3	pcs
64.d	Spacer			97516851	3	pcs
64	Spacing pipe		Length (mm): 29.05	96535101	12	pcs
66	Wedge lock washer			96536157	1	pcs
66	Wedge lock washer			92575609	1	pcs
67	Lock nut		Thread: M8	98277008	1	pcs
69	Spacing bush		Length (mm): 18.00	96538948	1	pcs
76a	Rivet			96620489	1	pcs
105	Shaft seal		Material type: HQQV	96538925	1	pcs
203	Helical compression spring			96547671	2	pcs