

R5090

RICE LAKE
WEIGHING SYSTEMS INDIA LIMITED

Rice Lake Weighing Systems India Limited
(Formerly Strategic Weighing Systems Limited)

CIN No.: U29196TN2005PLC057662

Mr. Vijay Kumar

CHECK LIST	
Accounted Rate as below	
Incl	
N.A.	
IGST: 18% Extra	
30% Advance against A	
10% After Installation	
60% Against Payment	
FOR: JAL BWP	
Warranty: one year	
2 weeks	

Discussed with
Mr. Vijay Kumar and
agreed below
Price.

PRICE OFFER

Price Basis per system:

Design, manufacture and supply of Electronic Road Weighbridge as per technical specifications and scope of supply ..

Packing and Forwarding charges

GST on above supply

Freight & Insurance upto site.

Supervision of Erection & Commiss-

Rs.17,37,585

(Rupees Fifteen Lakhs forty thousand One Hundred Forty five Only)

Inclusive

Extra as applicable at the time of dispatch (present rate is 18%)

By Customer / To-Pay basis

Rs.65,000/-

Final Rate
Rs. 14,75,000/-

→ EPC ~~Rs. 50,000~~
→ Transport - Incl.

Final Price
Rs. 15,25,000/-



Factory & Head office:- Plot No. A-27/1, SIPCOT Industrial Growth Centre, Mathur Village & Post, Oragadam, Sriperumbudur Taluk, Kancheepuram Dist., Tamilnadu, India, Pin: 620105. Ph. No.: 044-30673700 (30 Lines), Fax:- 044-30673799 Web: www.ricelake.co.in

Delhi Office: 1500 E. 16th Floor, Devika Tower-06, Nehru Place, New Delhi-110019 Ph. No. 011-46011556. E Mail Add:- kuldewali@ricelake.co.in, M. No.- 09819766949.



a)	Design	Static, Pit type, Load cell based Electronic Road WB
b)	Capacity of weighbridge	80 MT
c)	Size of platform	18M X 3M
d)	Accuracy	+/- 0.2% of FS
e)	Resolution	10 kg's
f)	Number of load cells	8 nos.
g)	Load cell rated capacity	40 MT each

Scope of Supply



Factory & Head office:- Plot No. A-27/1, SIPCOT Industrial Growth Centre,
Mathur Village & Post, Oragadam, Sriperumbudur Taluk,
Kancheepuram Dist., Tamilnadu, India, Pin: 620105,
Ph. No.:- 044-30673700 (30 Lines), Fax:- 044-30673799
Web :- www.ricelakeindia.co.in / www.ricelake.co.in

Delhi Office:- 1500 E, 16th Floor, Devika Tower, 06, Nehru Place,
New Delhi-110019 Ph. No. 011-46011556.
E Mail Add:- knidecpw@ricelake.co.in, M. No :- 09818766949



Per System

1.	Weighbridge made of steel structure duly painted	01 no.
2.	Compression type Load cells	08 nos.
3.	Load cell Mounting Assemblies	08 sets
4.	Necessary fasteners, conduits etc	01 no.
5.	Weighing Electronics, Model 480 Legend	01 no.
6.	Junction Box	01 set
7.	Inter connecting cable	1 set.

Scope of Work (Per System)

1. Supervision of Erection, Testing, Commissioning, Verification and then stamping by the Weights & Measures department.
2. All relevant drawings pertaining to the road weighbridge shall be provided to you within 15/21 days of receipt of your valued LOI/PO and confirmation of Soil Bearing Capacity of site.

Purchaser to provide at their cost:

- a. Information about soil conditions necessary for determination as to whether soil stabilization means are required and the nature thereof.
- b. All civil works with regard to the weighbridge will be as per RLWSIL drawings.
- c. Install a suitable weigh house within 15 meters of the weighbridge, free from dust and dirt, with a suitable window enabling the whole weighbridge area to be seen from the weighing instrument control panel.
- d. Suitable cable ducting from each weighbridge to the weigh house (civil scope).
- e. Provide power supply cables, conduits, switches, plug points and maintain electric power stipulated in our specifications in the weigh house.



Factory & Head office:- Plot No. A-27/1, SIPCOT Industrial Growth Centre,
Mathur Village & Post, Oragadam, Sriperumbudur Taluk,
Kancheepuram Dist., Tamilnadu, India, Pin: 620105,
Ph. No.:- 044-30673700 (30 Lines), Fax:- 044-30673799
Web : www.ricelakeindia.co.in * www.ricelake.com

Deshi Office: 1500 E. 16th Floor, Devika Tower 06, Nehru Place,
New Delhi-110019 Ph. No. 011-46011556
E Mail Add:- kvideepu@ricelake.co.in, M. No :- 09818786949



**TECHNICAL DATA SHEET FOR
ELECTRONIC ROAD WEIGHBRIDGE**

PART	Sl. No.	Features / Characteristics / Parameters	
WEIGH BRIDGE PLATFORM	1.010	Type	Pit Type
	1.020	Weighment Mode	Stationary
	1.030	Size	18M X 3M
	1.040	Rated Load	80 MT
	1.050	Safe Overload	150% of RL
	1.060	M.O.C.	Mild Steel (IS:2062)
	1.070	Deck Plate	Anti Skid Bars Welded
	1.080	Painting	Surface Preparation : Grit Blasting to SA 2 ½ Grade. Primer cum Finish Coat : Enamel Paint Colour : RED
	1.090	Check Rods	Not Applicable
	1.100	Mounting Type	Free Floating
	1.110	Mounting Argmt	8 Sets
ELECTRONICS	2.010	Model.	480Legend
	2.020	Make	Rice Lake Weighing Systems, USA
	2.030	Location	Table Top (Inside Weigh Cabin)
	2.040	Power Supply	230V AC \pm 10%, 50Hz \pm 3Hz, Single Phase
	2.050	Power Consumption	25 VA
	2.060	Temperature Range	-10 to 50 Deg C.
	2.070	Humidity	0 to 95% non-condensing.
	2.080	Enclosure	Stainless Steel
	2.090	Weight Range	0 to 80 MT
	2.100	Printing Facility	Provided
	2.110	Interface Thru	4 Key keyboard – Zero, Gross / Net, Tare, Units, Print, Up- Down- Left – Right arrow keys and ENTER
	2.150	Real Time Clock	Provided
	2.160	Connectivity	2 Serial ports
	2.200	Password Facility	Provided
2.210	Load cell Compensation	Provided (through sense +/- lines)	
2.220	Net Weight	Automatic Computation	
2.260	Self Diagnostics	Provided	
2.280	Auto Zero	Provided	
2.290	Manual Calibration	Provided (Password Protected).	
3.00	3.010	Type	Compression type



Factory & Head office:- Plot No. A-27/1, SIPCOT Industrial Growth Centre,
Mathur Village & Post, Oragadam, Sriperumbudur Taluk,
Kancheepuram Dist., Tamilnadu, India, Pin: 620105.
Ph. No.:- 044-30673700 (30 Lines), Fax:- 044-30673799
Web : www.ricelakeindia.co.in * www.ricelake.co.in

Delhi Office: 1800 E, 18th Floor, Devika Tower, 06, Nehru Place,
New Delhi-110019 Ph. No. 011-46011556.
E-Mail Add:- kuideepw@ricelake.co.in, M. No.:- 09818766949



LOAD CELLS	3.020	Model	RL 5426
	3.030	Make	RICE LAKE WEIGHING SYSTEMS INDIA LIMITED
	3.040	Rated Load	40 MT
	3.050	Safe Overload	150% RL
	3.060	Ultimate Overload	300% RL
	3.070	Enclosure	IP-68
	3.080	Sensitivity	Very High (2mV/V)
	3.090	Excitation Voltage	10V DC Nominal
	3.100	Temp. Range	-20 Deg C to +70 Deg C
	3.110	Compensated Temp	0 Deg C to +50 Deg C
	3.120	Combined Error	Lesser Than + 0.025%
	3.130	Non Linearity	<+ 0.025% FSO
	3.140	Non Repeatability	<+ 0.010% FSO
	3.150	Hysteresis	<+ 0.020% FSO
	3.160	Creep (after 30 min)	<+ 0.020% FSO in 30 min.
3.200	Integral Cable	4 core, 6 Meter	
3.220	Mtrl. of .Construction	Stainless Steel	
5.00	5.010	Location	Field
JUNCTION BOXES	5.020	Make	
	5.030	M O C	F R P
	5.040	Enclosure	IP-65
6.00	6.010	Overall accuracy	± 0.2% of rated capacity

Data Sheet - Road Weighbridge



Factory & Head office:- Plot No. A-27/1, SIPCOT Industrial Growth Centre,
Mathur Village & Post, Oragadam, Sriperumbudur Taluk,
Kancheepuram Dist., Tamilnadu, India, Pin: 620105,
Ph. No.:- 044-30673700 (30 Lines), Fax:- 044-30673799
Web : www.ricelakeindia.co.in / www.ricelake.co.in

Delhi Office: 1500 E, 16th Floor, Devika Tower, 06, Nehru Place,
New Delhi-110019 Ph. No. 011-46011556.
E Mail Add.:- kuldeepwadi@ricelake.co.in, M. No.:- 09818766949



RICE LAKE
WEIGHING SYSTEMS INDIA LIMITED

Rice Lake Weighing Systems India Limited
(Formerly Strategic Weighing Systems Limited)

CIN No.: U29196TN2005PLC057662



Factory & Head office:- Plot No. A-27/1, SIPCOT Industrial Growth Centre,
Mathur Village & Post, Oragadam, Sriperumbudur Taluk,
Kancheepuram Dist., Tamilnadu, India, Pin: 620105,
Ph. No.: 044-30673700 (30 Lines), Fax: 044-30673799
Web : www.ricelakeindia.co.in * www.ricelake.co.in

Delhi Office:- 1500 E. 16th Floor, Devika Tower, 66, Nehru Place,
New Delhi-110019 Ph. No. 011-46011800
E Mail Add:- kuldeepwal@ricelake.co.in, M. No.- 99513766949



Technical Specifications for Road Weigh Bridge

Structure	The weighbridge is robust in construction with ample safety margin above rated weighing capacity. The girders and transoms are rigidly secured to foundation restricting any movement of the weighbridge. The structure will be suitably painted with anti-corrosion paint.
Foundation	<u>Pit Type</u> The total foundation will be flushed below the ground level, hence the top of the weigh bridge will be same with the ground level. Since this is pit type foundation there is no need for ramps on both sides of the weigh bridge.
Load cells	Type: Compression Type
Safe Overload	150% of rated capacity
Breaking Load	300% of rated capacity
Safe Temp. Range	0 - 65 deg. Celsius
Degree of Protection	Weather-proof, IP-68 protection class. Only our load cell has passed the tests for IP-68 for immersion under 1 meter water column for 30 days.
<u>Electronics</u>	
<u>Manufacturer</u>	Rice Lake Weighing Systems, USA
Model No.	
Power Supply	230 V +/-10%, 50 Hz, Single Phase
Power consumption	25 VA
Operating conditions	Temperature: 0 - 50 deg. Celsius
	Humidity : 0 - 95% non-condensing



Factory & Head office:- Plot No. A-27/1, SIPCOT Industrial Growth Centre,
Mathur Village & Post, Oragadam, Sriperumbudur Taluk,
Kancheepuram Dist., Tamilnadu, India, Pin: 620105,
Ph. No.:- 044-30673700 (30 Lines), Fax:- 044-30673799
Web : www.ricelakeindia.co.in * www.ricelake.co.in

Delhi Office: 1500 E. 16th Floor, Devika Tower, 06, Nehru Place,
New Delhi-110019 Ph. No. 011-46011556.
E Mail Add:- kutdeepwal@ricelake.co.in, M. No. :- 09818766949



DI 220301396

AS167

ASHOKA METAL WORKS AND CO.

Sales Office: B-17, Street No.9, Anand Parbat Ind. Area, New Delhi - 110087

<p>To, Jindal Aluminium Pvt. Ltd. RIICO Industrial Area, Bhiwadi-301019 Mobile No.9611195368 Email ID- rajgopal@jindalaluminium.com Contact Person : Rajgopala Acharya Sharda ji</p>	<p>G.S.T. NO. 07AWJPG9376Q1ZJ Date : 31-03-2022 From : Ashoka Metal Works & Co.(REGD) Our Contact Person : Shiv Kumar Kapadia. Mobile No. 9610412950, Email ID – <u>Shivkumar.kapadia@gmail.com</u>, info@everlastsales.com</p>
--	---

Subject: 100 MT Capacity PIT mounted Weigh-Bridge.

Dear Sir,

We thank you for inviting offer from our company. Assuring you we quote our reasonable price, high-end best IP & IS quality and transparent terms. Our offer for Fully Electronic Weigh Bridge with specialty and standard defined.

Sl. No.	Type	Description	Remarks
1	Type	Pit Mounted (As per IS 800)	DISCOUNTED Rate
2	Capacity	100 MT as per Wts & Msr Capacity Table	INCLUDED EXTRA...
3	Model	AMW-F (as per IS 2062)	W-A INCLUDED EXTRA...
4	Least Count /Accuracy	10 Kg as per Wts & Msr, 0.017% Least Count approximate	
5	Platform Size	18 X 3 Mtrs. (Approx.60 Feet Long & 10 Feet Wide)	25% Advance, 65% against performance bond only.
6	Platform Thickness	12 MM, MS	
7	Load Cell Quantity	8 Nos. (Eight), (Protection Class IP 67 / IP 68)	
8	Load Cell Capacity	30 MT, Ultimate overload ≥300% of maximum capacity(as per IS 9281)	FOR JAL Bldg
9	Girder / Cantilever	400 x 140mm, 6 Nos., Main Joist (as per IS 800)	one year
10	Weight	13 MT(13000 KG) Plus / Minus 3%	one week
11	Electronic Items	A I.T. (Intelligent Terminal) "Everlast" Make (as per IS 3043) B Junction Box, "Everlast" make (as per IP 65 Protected) C Window Display "Everlast" Make (as per IP-67 Protected).	
12	Price (In Numerics)	Rs.10,50,000.00 Only.	
13	Price (In words)	Rupees Ten Lakhs Fifty Thousand Only	
14	Mandatory for Govt. Stamping	Buying C.I. Weights of One Metric Ton with Stamping are mandatory for Govt. Stamping of Weigh-Bridge on extra cost.	

Page 1 of 3

Buy Back of our old weigh Bridge.
 Re. 2,50,000/-
 Payment: 25% Advance, 65% Against performance, 10% After completion of new weigh Bridge erection.
 Discussed with Shiv Kumar not to be done.

ASHOKA METAL WORKS AND CO.

Sale Office: B-17, Street No.9, Anand Parbat Ind. Area, New Delhi - 110087

Terms & Conditions:

Taxes	G.S.T. 18% EXTRA Payable by Purchaser / On Vendee scope
Freight Charges	Payable by us / On Vendor scope
Govt. Stamping	Payable by us / On Vendor scope
Foundation Supervision	Payable by us / On Vendor scope
Fitting Charges	Payable by us / On Vendor scope
Despatch Period	Within 2 days from the date of payment received in our Bank A/C
Warranty Period	12 Months from the date of delivery / installation.
Offer Validity	15 Days
Payment Terms	25% Advance along with purchase order and 75% before dispatch from our factory for your delivery.

Bank Details: Account details of our Bank for R.T.G.S./N.E.F.T. or Fund transfer.:

AXIS BANK

1.

1	Account Name	Ashoka Metal Works And Co.
2	Account Number	920020067810137
3	Bank Name	AXIS Bank
4	Branch Name	Shakti Nagar, New Delhi - 110007
5	RTGS Number	UTIB0000054

UPS, Inverter, Battery, Printer, Key Board, Paper & Printing of Weighment-receipt, Jack, Unskilled Labour and light fitting in Weigh-Bridge room to be provide by Purchaser / Vendee.

2. Crane has to provide by purchaser / vendee at the time of unloading of Weigh-Bridge at foundation and welding machine with operator to provide by Purchaser / Vendee.

3. If you require, we shall depute our Civil Engineer to assist you at the time of construction with civil drawings.

4. Mason, masonic labour and civil material for Weigh-Bridge foundation to provide by purchaser / vendee at his cost at the time of erection.

5. Earthing should be ZERO ("0") Volt to be done by purchaser / vendee at his cost as per IS 3043/5039.

6. Customer has to provide test weights at his cost by the Weights & Measure Department at the time of stamping & verification of the Weigh Bridge.

Page 2 of 3

ASHOKA METAL WORKS AND CO.

Sales Office: B-17, Street No.9, Anand Parbat Ind. Area, New Delhi - 110087

Sir,

the products offered to you are of best quality. If you have any other query or clarifications, please let us now, we shall be too pleased to write to you again and/or meet to you at your convenient time and place for doing the needful. We now look forward to receive your valued order at an earliest date.

Thanking you and assuring you of our best services & cooperation at all the times.

Very truly yours,

For Ashoka Metal Works And Co.

(Shiv Kumar Kapadia)

M - 9610412950, 9414012950

Email : shivkumar.kapadia@gmail.com, info@everlastsales.com

If we sent offer by email that means we are agreed and abide by the terms & condition we mentioned and no necessity of sign by hand.

BRIEF INTRODUCTION

1. We are in the service of Weighing Machines from 1961, 61 years earlier.
2. We have installed many thousands Weigh-Bridges all over states in India.
3. Our main esteemed customers are PEPSI, Reliance, TATA, Honda, Hero, Delhi Metro, N.T.P.C., Indian Railway. Modi Sugar Mill, Patanjli, Zee News (PAN INDIA) and many more.
4. We Export to West Indies, Nigeria, Ghana, Afghanistan, Myanmar, Nepal, Mauritius, Bangladesh, Pakistan, Bhutan, Sri Lanka, U.S.A. and more.
5. The company has been awarded "Udyog Patra" by the President of India on 24th June, 1975, 46 years earlier.
6. **"EVERLAST" is our Brand Name**
7. Company's Ideal slogan:-

"God is always right" "Boss is always right" "Customer is always right"

SHORTEST INTRODUCTION

- From : "Everlast" (Brand Name)
- Manufacturer : Weigh-Bridges
- Since : 61+ years in Weighing-Machines
- Bhiwadi : Since 24+ years (1998) in Bhiwadi
- Installation : More than 116+ Weigh-Bridges within 10 km radius of Bhiwadi.
- Installation : 1200+ Weigh-Bridges only in Alwar District.
- Installation : Almost all states of India. We had already sold many thousands Weigh-Bridges in all states and abroad.
- Export : Approximate one dozen countries .e.g. Sri Lanka, Bangladesh, Nepal, Bhutan, Mauritius, Myanmar, Nigeria, Kenya, Ghana, U.S.A. and many more.
- Honour By President : The company has been awarded "Udyog Patra" by the President of India on 24th June, 1975, 47 years earlier
- Esteemed Customers : Our esteemed customers are Pepsi, Rayban , Honda, Hero, Reliance, Tata, Indian Railways, Delhi Metro, Patanjali, Zee News, Parle Biscuits, Priya Gold Biscuits, 555 Soap and many more.
- Resident Staff : We have 25 Resident staff of Electronic & Mechanical Engineers At Bhiwadi Service Station.
- Co's Ideal Slogan : God is always right. Boss is always right. **Customer is always right .**

Shiv Kumar Kapadia (Branch Manager)

9610412950, 9414012950, 9812059488 (24 Hours On)

E-mail : shivkumar.kapadia@gmail.com

Thanking You,

By "Everlast-Team"

List of more than 122 Weigh-Bridges installed within 10 K.M. radius of Bhivwadi only

S.No.	Name of Company	Capacity	Place
55	Arian Breweries New Mahou India Pvt. Ltd.	60 M.T.	Sarekhurd
56	Presidency Estate C/o Hindustan Fibres Ltd.	100 M.T.	Matila
57	Shri Balaji Grit & Rolling Pvt. Ltd.	60 M.T.	Khushkhera
58	Jai Bajrang Steels	100 M.T.	Khushkhera
59	Aggarwal Ready Mix Plant	100 M.T.	Khushkhera
60	Ramayna Ispat Ltd.	60 M.T.	Khushkhera
61	R.N.V. Steel & Alloys	60 M.T.	Khushkhera
62	D. C. Industries	60 M.T.	Khushkhera
63	Shri Tirupati Furnaces	100 M.T.	Khushkhera
64	Giriraj Casting	60 M.T.	Khushkhera
65	Neelkanth Steels	100 M.T.	Khushkhera
66	Krishna Dairy Ltd.	80 M.T.	Khushkhera
67	R.N.T. Metals	60 M.T.	Khushkhera
68	True Worth Trade Link Pvt. Ltd.	100 M.T.	Khushkhera
69	S.B.F. Ispat Pvt. Ltd. -II W/B. Karoli	100 M.T.	Khushkhera
70	S.B.F. Ispat Pvt. Ltd. (Karoli)	100 M.T.	Khushkhera
71	Metacore India Pvt. Ltd.	60 M.T.	Khushkhera
72	Gupta Steel	60 M.T.	Khushkhera
73	Bhole Shankar Dharmkanta	100 M.T.	Khushkhera
74	Balaji Dharmkanta	50 M.T.	Khushkhera
75	Ananya Enterprises	80 M.T.	Khushkhera
76	B.D.I. (Builder & Developer)	100 M.T.	Tapukara
77	Kajaria Ceramics Limited (Gailpur)	100 M.T.	Tapukara
78	A.G.R. Steel	50 M.T.	Dharuhera
79	Omax Autos Limited	60 M.T.	Dharuhera
80	Shree Balaji Aluminicast Pvt. Ltd.	60 M.T.	Dharuhera
81	Tirupati Stone Crusher, Jaatnal	100 M.T.	Dharuhera

List of more than 122 Weigh-Bridges installed within 10 K.M. radius of Bhiwadi only

S.No.	Name of Company	Capacity	Place
28	Rampur Engineering	60 M.T.	Bhiwadi
29	ECR Buildtech Pvt. Ltd. - IInd	100 M.T.	Bhiwadi
30	Tirupati Enterprises	60 M.T.	Bhiwadi
31	Saera Electric Auto Ltd.	60 M.T.	Bhiwadi
32	Gupta Industries	60 M.T.	Bhiwadi
33	Goel Steel	60 M.T.	Bhiwadi
34	V.R.K. Almart	100 M.T.	Bhiwadi
35	M.J.D. Dharmkanta	120 M.T.	Bhiwadi
36	Frontier Strips	60 M.T.	Kehroni
37	Mitali Alloys	60 M.T.	Bhiwadi
38	Frontier Strips	60 M.T.	Kehroni
39	Virgo Decore Ltd.	100 M.T.	Kehroni
40	Alton Panel Ltd.	80 M.T.	Kahroni
41	Dhawan Box Sheet Containers Pvt. Ltd. - IIIrd	100 M.T.	Kahroni
42	Moha Impex	60 M.T.	Chopanki
43	Dhawan Box Sheet Containers Pvt. Ltd. - 1st Unit	80 M.T.	Chopanki
44	Dhawan Box Sheet Containers Pvt. Ltd. - IInd-Unit	80 M.T.	Chopanki
45	Vaishno Wires Pvt. Ltd.	80 M.T.	Chopanki
46	K.E.I. Ltd. - IInd	80 M.T.	Chopanki
47	Jai Bharat Furnace	60 M.T.	Chopanki
48	Jai Ambey Casting Pvt. Ltd.	60 M.T.	Chopanki
49	Shri Shubham Enterprises	60 M.T.	Chopanki
50	Rellison Cable	60 M.T.	Chopanki
51	Pine Laminates - 1st Unit	100 M.T.	Chopanki
52	Pine Laminates - 2nd Unit	100 M.T.	Chopanki
53	K.E.I. Ltd. - IIIrd	100 M.T.	Pathreda
54	ECR Buildtech Pvt. Ltd. - 1st	100 M.T.	Pathreda

OLD WEIGH BRIDGE NOT IN USE

S.No.	Name	From	Location
1	M/s. Bhiwadi Dharam Kanta	1987	Bhiwadi
2	M/s. Janta Dharam Kanta	1992	Bhiwadi
3	M/s. Mohan Ram Dharam Kanta	1992	Bhiwadi
4	Jai Bhawani Con. Cost	1991	Bhiwadi
5	Stag Steels Pvt. Ltd.	1993	Bhiwadi
6	D.P. Steel Industries	1995	Bhiwadi
7	Sun Tube Ltd.	1998	Bhiwadi
8	Fauji Dharam Kanta		Alwar By Pass (Bhiwadi)
9	Baba Dharam Kanta		Alwar By Pass (Bhiwadi)
10	Sai Dharam Kanta		Khushkheda

M/s. Essae Digitronics Pvt Ltd,
Bangalore.

for 12m x 3m x 2 agreed

Rs. 13,00,000 /
Rs. 15,00,000 /
Rs. 13,00,000 /
finally agreed

Price Details:

S. No.	Description	Rate per Unit (INR)	Qty	Amount (INR)
1.0	Basic Price for 60MT 16x3m Weigh Bridge	13,20,000.00	1	13,20,000.00
2.0	PC , Printer, UPS	1,20,000.00	1	1,20,000.00
6.0	Supervision charges for Installation		Included	
7.0	Packing & Forwarding		Included	
8.0	Transportation		60000.00	
9.0	Transit Insurance		Included	
10.0	Stamping Charges		50000.00 or Extra at Actuals	

Other Commercial Terms & Conditions

GST @ 18% shall be charged extra.

Our Product HSN Code is 8423 9010 (Composite & Mixed Supply)
Composition of the Weighbridges will be in two parts. Platform will be Invoiced from our works at Bangalore, Karnataka and The Electronic Kit will be Invoiced from our Uttarkand plant

Guarantee Period:

12 months from the date of installation or 14 months from the date of invoice whichever is earlier.

Despatch:

Within 4 weeks from the date of technically & commercially completed purchase order.

Validity of quotation:

Till 30 March 2022.

CHECK LIST

Platform Weighbridge as above
 Incl
 P.P. INCLUDED EXTRA
 N/A

25% Advance, 65%
 Against Proforma; 10% After Come
 FOR SOL BN.

Warranty: One Year

4 weeks

Page 14 of 15

Discussed with
 Mr. ABHJEET and agreed
 above rate

Done
 06/07/22

- ❖ All welding is done using High tensile wires (ER 80S-G) which is Compatible to the grade of high tensile grade of steel.
- ❖ Structures shall be shot blasted to SA 2 ½ and Finish shall be epoxy painted to 120 DFT.
- ❖ All bolts connecting End Block and Module shall be M 20 – Gr 10.9

Quotation for Essae Electronic Weighbridge – Orthotropic Modular Truck Scale

➤	Capacity	:	60MT
➤	Platform Size	:	16m x 3m.
➤	Interval	:	± 10 Kg
➤	Type	:	Pit type

Scope of Supply - ESSAE:

S. No.	Items	Quantity
01	Digital Indicator	1 No
02	Load Cell (Double Ended Shear Beam Type)	10 Nos.
03	Load Cell Assembly	10 Nos.
04	ESPD – 30 (Surge Protection Device) cum Junction Box	1 No
05	Junction Box	1 No
06	Cable & Connectors	1 set
07	Truck Scale Software (CD)	1 No
08	Civil & Electrical Drawings	1 Set
09	PC, Printer and 1 KVA Online UPS	1 Set

Customer Scope of Work:

- Unloading and Safe storage of equipments till installation at yoursite.
- Providing Standard Test Weights for testing and calibration
- Construction of Civil foundation & Control room as per EDPL Drawings.
- Electrical work including earthing as per EDPL Drawings.
- DCS communication cabling and termination
- Unskilled Labourers, Welder & Welding to be provided during installation.
- Crane/Hydra & Screw/Hydraulic jack during the time of installation.
- Stamping is done by customer.

Payment Terms:

- 30 % advance along with purchase order.
- 70% against Proforma Invoice prior to dispatch.

Your Purchase Order should be addressed to:

Essae Digitronics Pvt Ltd.,
Plot No: 34 & 35, Bommasandra Industrial Area,
Anekal Taluk, Bommasandra,
Bangalore – 560 099.

Thanking you,

Yours truly,

For Essae Digitronics Pvt. Ltd.,

Abhijeet Pandey

(Territory Manager)

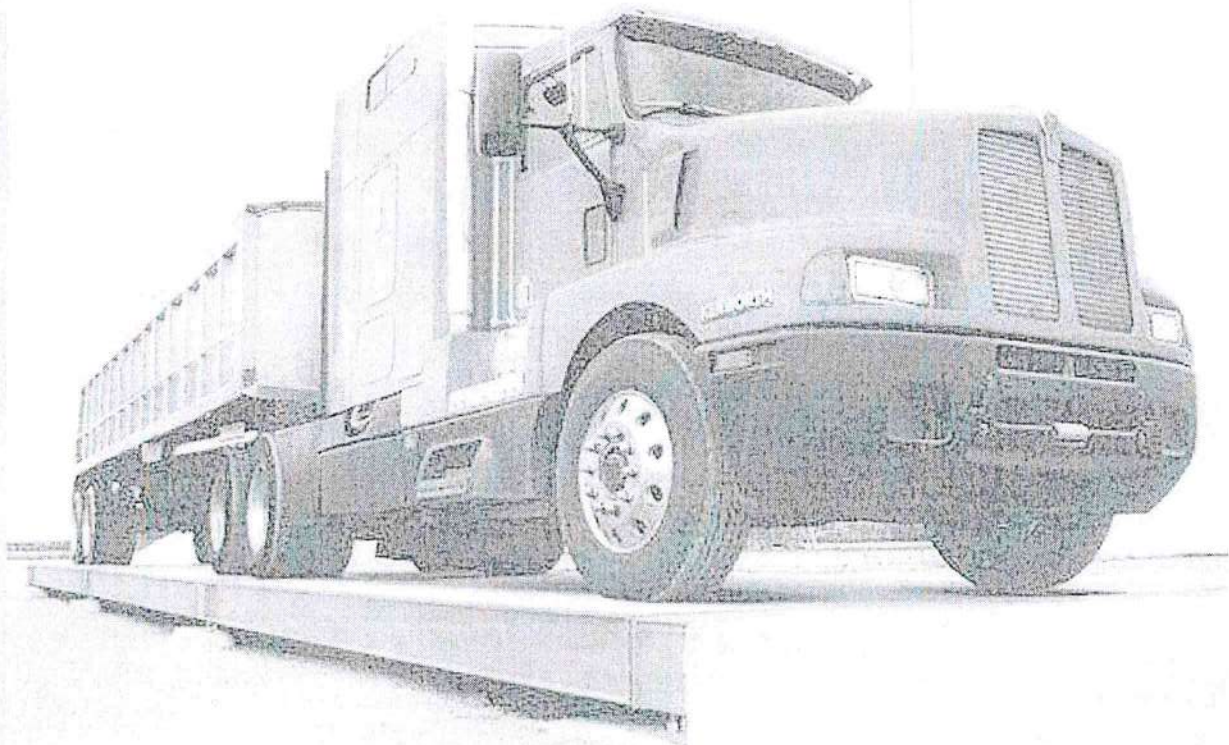
+91 7905362961

abhijeet.pandey@mails.essae.in

Ref: EDPL/JAL/21-22/QW2203022

March 22, 2022

Techno – Commercial Offer for ESSAE Electronic Weighbridge



To,

M/s. Jindal Aluminium Limited

Indo Alusys Industries Limited, Erstwhile., SP- 2/333, RIICO Industrial Area, Bhiwadi, Rajasthan 301019

Kind Attn.: Mr. Rajgopal

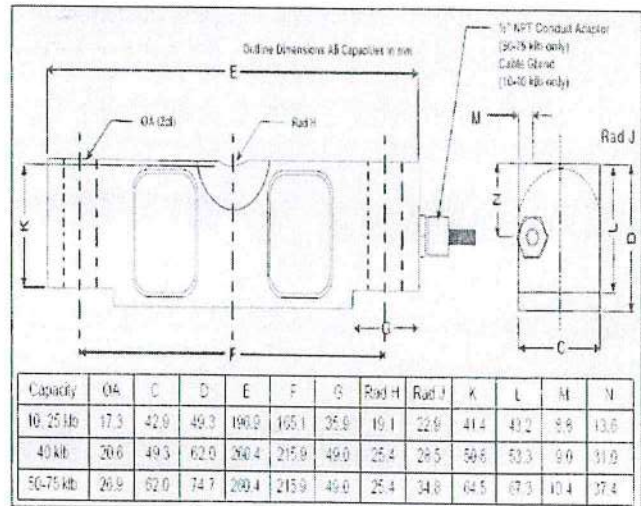
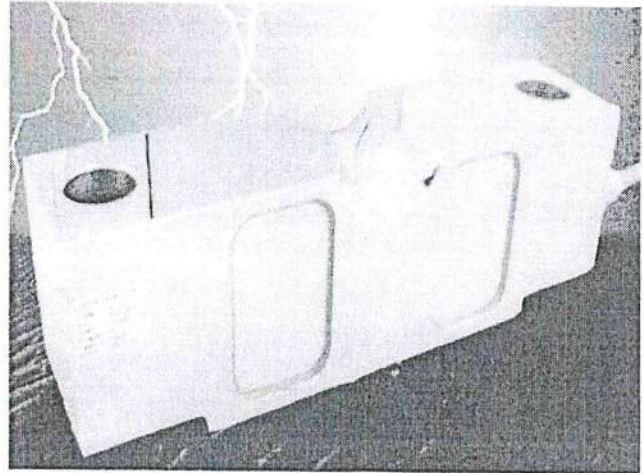
Email: rajgopal@jindalaluminium

From:

**Mr. Abhijeet Pandey
(Territory Manager)
Mob: 7905362961**

Specification of LOAD CELL

GRADE	E
Load Cell Type	Double Ended Shear Beam
Rated Capacities	10 klb, 25 klb, 40 klb, 75 klb
Rated output	3.0 mV/V \pm 0.25%
Total Error*	0.050 \pm % of Applied Load
Zero Return after 30 mins	0.050 \pm % of Applied Load
Temperature Effect : On Output	0.004 \pm % of Applied Load/*C
: On Zero	0.007 \pm % of Rated output/*C
Zero Balance	3.0 \pm of Rated Output
Temperature range : Operating	-30Deg. C to + 80 Deg. C
: Compensated	-10 Deg. C to + 40 Deg. C
Safe Overload	150% of rated capacity
Ultimate Overload	300% of Rated Capacity
Excitation : Recommended	10 Volts AC or DC
Maximum :	15 Volts AC or DC
Input impedance	780 \pm 20 Ohms
Output Impedance	705 \pm 5 Ohms
Insulation Impedance	>1000 Mega Ohms
Deflection at Rated Capacity	<0.4 mm
Weight :	10-25klb : 2.5 kg, 40klb : 5.0 kg, 50-75klb : 8.5 kg
Construction :	Electroless Nickel Plated Alloy steel
Environmental Protection	IP68
Cable	4 Core, 14 Strand stainless steel braided cable



Specification of INDICATOR

Features

- Stable Weight Output.
- Fully Stainless Steel Body (table Mounting)
- Complete Protection against electro-magnetic radio and frequency interface.
- Exceeds OIML Class III.
- Built-in RS232 Communication.
- Selectable Resolution up to 1 in 15,000.
- Selectable Auto Zero Tracking.
- Selectable Tare Limit up to Full Scale.
- Selectable Load Cell Sensitivity

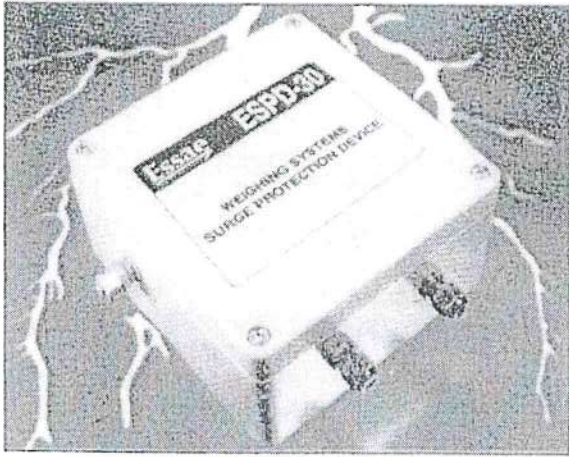


Specification

- | | | |
|---------------------------|---|--|
| • Capacity | : | Programmable up to 6 digits. |
| • Increment | : | Programmable 1, 2, 5, or 10. |
| • Display Resolution | : | Maximum 1 in 10,000. |
| • Operating Temperature | : | -10°C to +55°C. |
| • Operating Humidity | : | 15 to 93% RH. |
| • Speed of A/D Conversion | : | Selectable up to 12 times per sec. max or 5Hz |
| • Non Linearity | : | 0.016% of Full Scale or Less |
| • Repeatability | : | 0.016% of Applied Load |
| • Internal Resolutions | : | 1/100,000. |
| • Communications | : | Built-in RS 232C. |
| • Communication protocol | : | Selectable to either Half or Full Duplex. |
| • Speed of Communication | : | Selectable from 1200 to 9600 bps. |
| • Display type | : | vacuum Florescent Display. |
| • Number of Digits | : | Six |
| • Height of Display | : | 13mm |
| • Input Voltage | : | 240V. 50Hz. |
| • Power Consumption | : | 1.2 watts/hour. |
| • Keys Available | : | ON/OFF, Re-Zero, Tare. Digitiser, Digit Selection, |

- Digit Increment, Accumulation Print Key
- Display Annunciators : Overflow, Tare Indication, Zero Stability & Weight
- Location : Control room

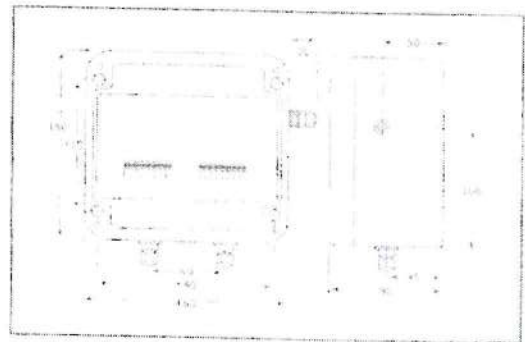
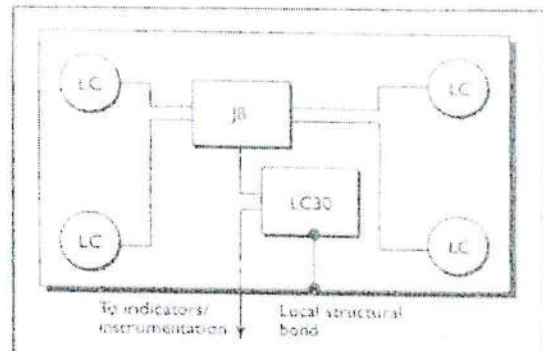
Specification of SURGE PROTECTION CUM JUNCTION BOX



- Protects Load cells against surges caused by lightning.
- Repeated auto-resetting operation without maintenance.
- Reliable protection through high surge absorption capacity
- Weather proof enclosure
- No effect on system accuracy

Specifications

- Nominal Excitation Voltage : 20 V dc
- Maximum Excitation Voltage : 32 V dc
- Peak Impulse Current(8/20ms) : 10kA
- Leakage Current : 10 μ A at 32 V dc
- Ambient Working Temperature : -20°C to +60°C
- Ambient Storage Temperature : -30°C to +70°C
- Humidity : 5% to 95% RH (Non- Condensing)
- Ingress Protection : Dust and Water Tight IP-67
- Weight : 1.5kg
- Location : Control room



Weigh Soft Enterprise

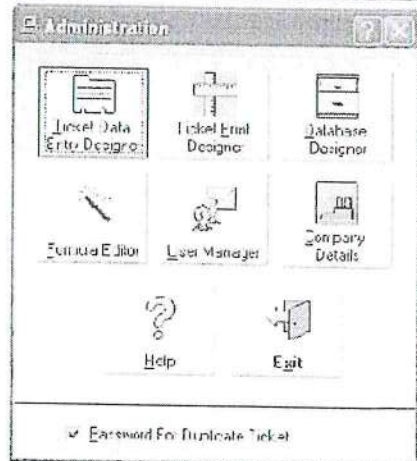
WeighSoft Enterprise handles the process of weighing material. The application enables you to capture weight data, print weight tickets and reports. It stores the weight data for future processing and reporting. WeighSoft Enterprise is simple to use and extremely user-friendly. The main screen allows you to navigate to the various functions, with the help of buttons and menus.

General Features

- Compatible with Windows 98 and Above
- Graphical User Interface (Visual Basic)
- MS Access Database
- Menu Driven for easy use

Application Features

- Allows entry of Online and Offline tickets.
- Allows entry of Single Point tickets.
- Allows printing of tickets and reports.
- Allows user to define data fields that are to be captured for the ticket.
- Allows user to define print format for the Weight Ticket.
- Allows entry of Material, Supplier, Vehicle details and Shift details in the master tables.
- Allows configuration of Material and Supplier tables (Add / remove fields)
- Allows user to create formula fields.
- Allows user to view Reports based on specific queries.
- Has a well-defined security mechanism that provides different levels of users.
- Has detailed Help on every screen.



Specification of SOFTWARE

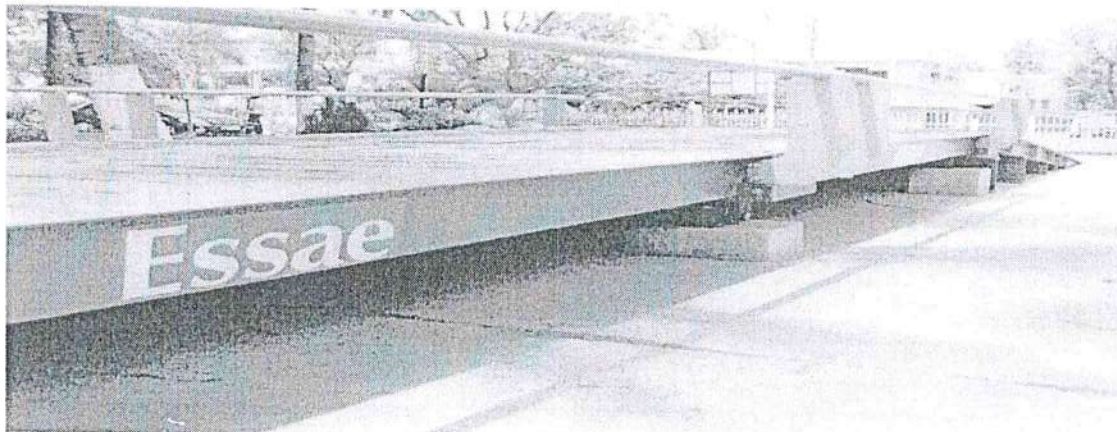
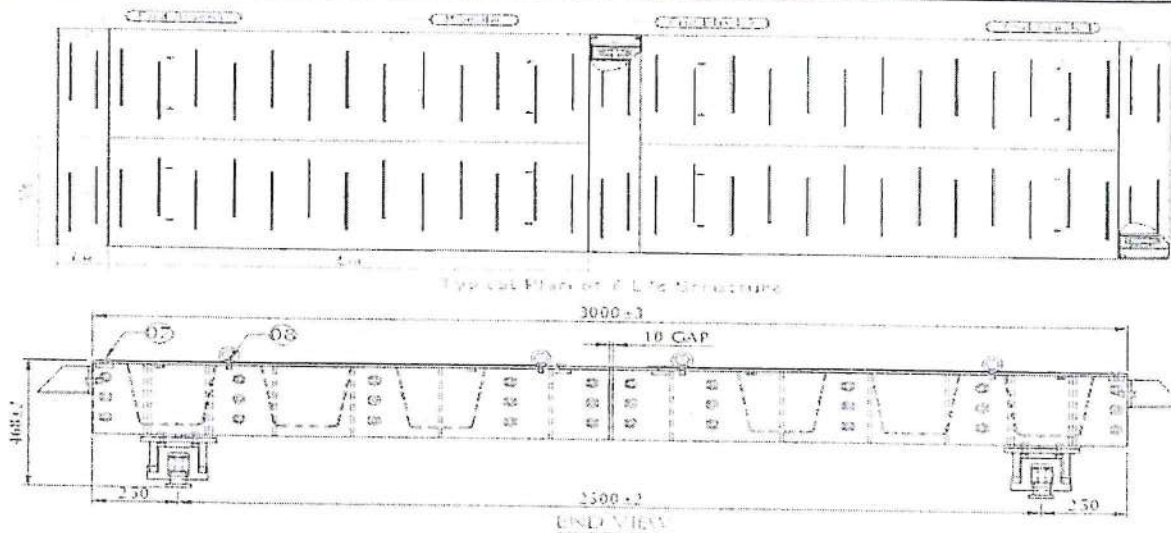
General Features:

- Graphical user Interface (Visual Basic).
- Allows printing of Tickets and reports.
- Allows entry of material, supplier, vehicle details and shift details.
- Has a well defined security mechanism that provides different levels of users.
- Allows user to create formula fields and to view Reports based on specific queries.
- Special Integrated software for integration of all weighbridges in Plant.
- Has detailed help on every screen.

Software Application Features:-

- ❖ User Friendly Software to Create customer own fields.
- ❖ Industrial Weight Soft – Creating a truck table in Customer database server & connecting to weigh soft.
- ❖ Integrating with ERP & SAP – By providing 5 different Databases
 - ✓ MS SQL
 - ✓ Oracle
 - ✓ MY SQL
 - ✓ Postgre SQL
 - ✓ Sybase
- ❖ Data Base Management Service (DBMS) for Weigh soft Database, Stores Database and Accounting Database
- ❖ Client & Server Application
- ❖ Advantages :
 - ✓ Easily & Efficiently Accessible
 - ✓ Secured & common Database
 - ✓ Backup Facility for MS-Access
 - ✓ Multiple Material Weighment
 - No Duplication Entry
 - Centralized Database
 - Selection of printer & Copies
 - Database Protection.

Platform Specification – Orthotropic Modular Structure



Platform Material	: High Tensile Steel Plates of grade 2062:2006.
Make	: Jindal
Platform Design	: Orthotropic Modular Structure
Anti-Skid Mechanism	: Mild Steel Ribs at equal distance
Platform Painting	: Fully automated Epoxy.
Platform Paint Colour	: Phirozhi Blue / Black.

- ❖ Each module shall be seal welded including top plate and contain of U Beam.
- ❖ Depth of module shall be 268 mm and width shall be 1500 mm.
- ❖ Complete structure is fabricated using High tensile plates of grade IS:2062 FE 540 steel having min yield strength of 410 Mpa.