

→ 2020
→ ~~2019~~ - 102

9828084268

AK ENGINEERING WORKS
J- 1145 Phase III Riico Industrial Area Bhiwadi

QUOTATION FOR DISTRIBUTION PANEL

S.No.	DESCRIPTION	MAKE	QTY	RATE	AMOUNT
1	MAIN INCOMER :-				
1	800 A MCCB TP 55 KA <i>3VD</i>	Siemens	1	48270.00	48270.00
2	Rotary Handle <i>3VD</i>	Siemens	1	5033.00	5033.00
3	Spreader Link	Siemens	1	5536.00	5536.00
2	METERING :-				
1	MF Meter EM6436NG	Schneider	1	11795.00	11795.00
2	R,Y,G Indicator (LED)	Siemens	3	155.00	465.00
3	Control MCB 6A SP	Siemens	3	210.00	630.00
4	C.T 800/5A , CL - 1 5 VA	Rishav/Procom	3	975.00	2925.00
4	OUT GOING FEEDER :-				
1	250 A MCCB TP 36 KA <i>ON/OFF Indicators</i>	Siemens	3	14857.00	44571.00
2	Rotary Handle	Siemens	3	1184.00	3552.00
3	Spreader Link	Siemens	3	1300.00	3900.00
4	100 A MCCB TP 25 KA	Siemens	4	4761.00	19044.00
5	Rotary Handle	Siemens	4	923.00	3692.00
6	Spreader Link	Siemens	4	1040.00	4160.00
5	ALUMINIUM BUSBAR				
	Electrical Grade Alu Bus-Bar 800 A TPN With Colour Coated H.S sleeve, Bus -Bar insulator & Hardware Items etc	Hidalco	1	16800.00	16800.00
6	Enclousure Should be made out of 16/18 SWG CRCA sheet Powder coated Colour siemens Gray. OR Demand by the Customer. Size(2100X 1875X400)	AKEW	1	45000.00	45000.00
7	Meter Wiring, MCB's wiring with ferul, thimble, Pvc Channel, D&C chanel, cable tie, Hardware etc.	Standard	1	20000.00	20000.00
8	Labour & Other Expences				11768.00
	TOTAL AMOUNT Rs. :-				247141.00

- 1 All Tax Extra
- 2 Advance 50%
- 3 Bylance Payment Agency Deliver
- 4 Freight Extra

Discussed with
Mr. Shastri and
agreed above
date.

10 days

100% NORTH
100% NORTH
100% NORTH

100% NORTH
100% NORTH
100% NORTH

100% NORTH
100% NORTH
100% NORTH

100% NORTH
100% NORTH
100% NORTH

Rs. 2,40,000/-

275

9368773381

M/s. Multitech Engineers,
Bhivandi.

Kindly note that:

- The Panels shall be construction using pre punched sheet metal profiles to ensure pre-treatment & painting process, better finish & greater flexibility to make any future modifications & faster deliveries due to higher degree of standardization.
- The entire range is dry electrostatic painted (Powder coated).
- All our design and engineering activities are done on AutoCAD
- Accessible live parts (i.e. busbars, input/output cables/Electrical live parts etc.) will be shrouded with transparent Poly Carbonate sheets of suitable thickness.
- Control wiring will be carried out with 1100V grade PVC insulated colour coded copper flexible wire of standard make and of adequate size.

PRICE SCHEDULE

Price of LT Panel

INR 260,000.00 each

Total Price of Main LT PANEL

INR 260,000.00+ Taxes+ Freight

Final Rate

Rs. 2,25,000/-

4/4

Mr. V. D. Yadav

CHECK LIST

MTE/2022-01A

DISCOUNT: *ed Rate as above*

DEF : INCLUDED: *Ind* EXTRA:

DEF : INCLUDED: *N/A* EXTRA:

DEF : INCLUDED: *GST: 12% Extra* EXTRA:

DEF : INCLUDED: *100% within 7 days* EXTRA:

DEF : INCLUDED: *FOR - JAL BND* EXTRA:

DEF : INCLUDED: *WARRANTY: ~~one~~ one year* EXTRA:

DEF : INCLUDED: *3 weeks* EXTRA:

*Discussed with
Mr. Yadav and
agreed above
date*

(Signature)

BILLS OF MATERIALS

LT PANEL

S.NO	DESCRIPTION	Make	Qty	Unit
	1. LT PANEL PANEL			
1	Incomer 800A, MCCB 4Pole ,36KA with Thermal Protection Release Based with O/L; S/C	SIMENS	1	No
2	Spreader Link for 800A, MCCB.	SIMENS	1	Set
3	Extended Type Rotary Operating Handle .		1	No
4	METERING DIGITAL:-			
	A. 3 Phase Volt Meter Digital . 6400NG	Schneider	1	No
	B. 3 Phase Ammeter Digital.	Schneider	1	No
	C. Phase R Y B Indicating Light LED	L&T/ABB	3	No
	D. 6A, SP MCB , 10KA	L&T/ABB	3	No
	E. CTS, 600/5A , 15VA,Class-1	RISHABH	3	No
	F. Neutral Link		1	No
	OUTGOING.			
5	250A, MCCB 3 Pole 36KA with Thermal Protection Release Based.	SIMENS	3	No
6	Spreader Link for 250A, MCCB. 3 SET	SIMENS	3	SET
7	Extended Type Rotary Operating Handle .	SIMENS	3	No
8	100A, MCCB 3 Pole 36KA with Thermal Protection, Release Based	SIMENS	4	No
9	Spreader Link for 100A, MCCB.	SIMENS	4	Set
10	Extended Type Rotary Operating Handle for 100A MCCB	SIMENS	4	No
11	Steel Enclosure Size Width-1900mm x Height -1975mm x Depth 500mm With Powder Coated.		1	No
12	800A, Aluminum Bus Bar Electrical Grade. HINDALCO 78 KG	HINDALCO	40	KG



SECSPL/KSS/2022-23/Q220040
2-May-22

Jindal Aluminium Limited
16th KM Jindalnagar
Tumkur Road
Bangalore - 560 073

Kind Attention Mr Rajgopal C Sarda - Asst Manager Purchase
Mob: 9611195368

Sub: Quotation Against your Enquiry for Supply of LT Panel

Project: LT Panel

Dear Sir

Thank you for your kind Enquiry and we hereby submit our most competitive offer for the manufacture and supply of the following

Flow Rate
Rs. 330,000/-

Sl. No.	Description	Qty	Unit	Unit Price	Amount (Rs)
1	LT PANEL	1	No.	370,400.00	370,400.00
Total					370,400.00

We hope that you would find our offer in line with your requirement and we will be glad to receive your esteemed Purchase Order at the earliest

Thanking You
Yours Faithfully
For Sun Electro Control Systems Pvt Ltd.

(Shreeshha KS)
Director

- Encl:
1. Bill Of Materials
2. Terms & Conditions

Address : # A1, Soundarya Industrial Estate, Andhrahalli, Near Peenya 3rd Stage Bangalore 560 091 Ph 080-23245116

CHECK LIST

DISCOUNT: *ed Rate as above*

POP : INCLUDED *Ind* EXTRA

INC : INCLUDED *N-t* EXTRA

OS/AG/TH/IG/SP/14% Extra

WARRANTY TERM: *100% within 7 day*

from the date of receipt

WARRANTY: *one year*

FOR - *VAL BOND*

Est. *3 weeks*

VALIDITY: _____

Discussed with Mr. Shreeshha and given above rate

Flow
13/05/22



Sun Electro Control Systems Pvt. Ltd.
A1, Soundarya Industrial Estate Andhrahalli
Near Peenya 3rd Stage Bangalore - 560091

Q220040

Sl No.	Description	Make	1 Qty	No. Units
A Incomer MCCB - 800A				
1	MCCB 800A TP MCCB 55ka TM based with OL,SC Rel	Siemens	1	No.
2	Extended Rotary Handle + Aux.Contact - FP	Siemens	1	No.
3	RYB Indicating Lamp 220V AC LED Type	L&T-Esbee	3	No.
4	Indicating Lamp 220V AC LED Type - ON/OFF	L&T-Esbee	2	No.
5	MCB SP 6A 10KA - Control - C-Curve	Siemens	4	No.
6	Digital Ammeter 0 - 800A with In-Built Selector Switch CL-1.0	Conzerv	1	No.
7	Digital Voltmeter 0 - 500V with In-Built Selector Switch CL-1.0	Conzerv	1	No.
8	Current Transformer 800/5A CL:1,10VA TW/PB	AE/Kappa	3	No.
9	Disconnecting Type Terminals	CW / Elmex	1	Set
10	Neutral Link	Reputed	1	No.
B General Components				
1	Aluminium Busbar 50 X 10 X 2 - Phase & 50 X 10 X 1 - Neutral	E91E	80	Kgs
2	Busbar Support - FRP Type	Secspl	40	No.
C Outgoing Feeder - 1 MCCB - 250A				
1	MCCB 250A TP 36ka TM based with OL & SC Rel.	Siemens	3	No.
2	Spreader Link + Extended Rotary Handle + Aux.Contact -TP	Siemens	3	No.
3	Indicating Lamp 220V AC LED Type - ON/OFF	L&T-Esbee	6	No.
4	MCB SP 6A 10KA - Control - C-Curve	Siemens	3	No.
5	Neutral Link	Reputed	3	No.
D Outgoing Feeder - 2 MCCB - 100A				
1	MCCB 100A TP 36ka TM based with OL & SC Rel.	Siemens	4	No.
2	Spreader Link + Extended Rotary Handle + Aux.Contact -TP	Siemens	4	No.
3	Indicating Lamp 220V AC LED Type - ON/OFF	L&T-Esbee	8	No.
4	MCB SP 6A 10KA - Control - C-Curve	Siemens	4	No.
5	Neutral Link	Reputed	4	No.
E Cubicle				
1	Cubicle 2550 X 1800 X 500	Secspl	1	No.
			325	Kgs
			370,400.00	R/O

For Sun Electro Control Systems (P) Ltd;

(Shreesha KS)
Director

ANNEXURE - II

PRICE SCHEDULE FOR SUPPLY OF FOLLOWING PANELS

M/s:-Jindal Aluminium

S. No	Description	Qty	Unit	Unit Quoted Price	Total Quoted Price (Ex-works)
1	PDB Panel -Indoor Type	1	No.	2,81,000	2,81,000
TOTAL (Basic Price)		1			2,81,000

Final Rate
Rs. 2,69,000


HSN CODE FOR ELECTRICAL LT PANELS : 85371000
 HSN CODE FOR ELECTRICAL HT PANELS : 85372000

Deviation/Clarification

NOTE:-

1.0 Our offer shall be strictly based on attached BOM.

For ZENIYA ELECTECH PVT. LTD.
 Bhiwadi- 301019

Discussed with Mr. Jais and agreed above rate

 13/01/22

CHECK LIST	
DISCOUNT	<i>Rate as above</i>
INCLUDED	<i>Incl</i>
EXTRA	<i>N.A.</i>
INCLUDED	<i>EXTRA</i>
EXTRA	<i>EXTRA</i>
TAXES	<i>GST: 12%</i>
DELIVERY	<i>100% within 7 days from the date of receipt</i>
WARRANTY	<i>one year</i>
VALIDITY	<i>10 days</i>

ANNEXURE - IV

Projects:-					
1 PDB Panel -Indoor Type					
Item	Item Description	Rating	Make	Qty.	
	I/C-800A TP MCCB Feeder				
MCCB	TP MCCB 55kA Thermal Magnetic based with O/L & S/C Protection Release	800A	Siemens 3VA15	1	No.
MCCB	Extended Rotary Handle +Aux.Contact -FP	800A	Siemens 3VA15	1	No.
AM	Digital Ammeter inbuilt Selector Switch CI-1.0	DM3110	Conzerv	1	No.
VM	Digital Voltmeter inbuilt Selector Switch CI.1.0	DM3210	Conzerv	1	No.
MCT	Metering CT -/5A CL-1.0,10VA For Metering	800A	AE/Kappa	3	Nos.
I/L	Indicating light LED type (RYB)	220V AC	L&T-Esbee	3	Nos.
I/L	Indicating light LED type (ON/OFF)	220V AC	L&T-Esbee	2	Nos.
NL	Neutral Link		Reputed	1	No.
CMCB	Control SP MCB 10KA C-Curve	6A	Siemens	4	Nos.
	O/G:100A TP MCCB Feeder				
MCCB	TP MCCB 36kA Thermal Magnetic based with O/L & S/C Protection Release	100A	Siemens 3VA11	4	Nos.
MCCB	Spreader Link +Extended Rotary Handle +Aux.Contact -TP	100A	Siemens 3VA11	4	Nos.
I/L	Indicating light LED type(ON/OFF)	220V AC	L&T-Esbee	8	Nos.
NL	Neutral Link		Reputed	4	Nos.
CMCB	Control SP MCB 10KA C-Curve	6A	Siemens	4	Nos.
	O/G:250A TP MCCB Feeder				
MCCB	TP MCCB 36kA Thermal Magnetic based with O/L & S/C Protection Release	250A	Siemens 3VA12	3	Nos.
MCCB	Spreader Link +Extended Rotary Handle +Aux.Contact -TP	250A	Siemens 3VA12	3	Nos.
I/L	Indicating light LED type(ON/OFF)	220V AC	L&T-Esbee	6	Nos.
NL	Neutral Link		Reputed	3	Nos.
CMCB	Control SP MCB 10KA C-Curve	6A	Siemens	3	Nos.
	O/G:5Nos. MCB Vacant Feeder			1	No



M/s. Pima Controls Pvt Ltd
Jaipur

ANNEXURE-III

PRICE OFFER

Sr No.	Description	Qty	Unit Price (Rs.)	Total Price (Rs.)
1	OFFER FOR 800A PDB PANEL	1	296,000/-	296,000/-
			Total Value	296,000/-

Final Rate
Rs 241,000/-

SECTION - 2 (Commissioning Charges)

COMMISSIONING CHARGES Per Day rate of engineer to be deputed at Site Commissioning/start up.	Rs 12,500/- Per Man-Day (To & FRO Conveyance Charges from Jaipur to Site, Local conveyance, Lodging and boarding of the commissioning engineer will have to be provided by M/s Jindal Aluminum Pvt Ltd.
---	--

Commercial Terms & Conditions

Delivery	Material will be ready within 6 to 8 weeks from the Date of Approval of Drawings with Advance Payment
GST	Extra As applicable @18% charged. HSN Code: 85371000
Freight & Insurance	In Customer Scope (Not in PIMA Scope) Prices FOR Ahmedabad Basis
Packaging & forwarding	Exclusive (Not in PIMA Scope)
Offer Validity	30 days from date of Proposal Submission
Warranty	12 Months from the Date of Invoice against Manufacturing defects only
Payment Terms	50 % Advance along with Purchase Order & Balance 50% with 100 % Taxes against Performa Invoice Before Dispatch

ORDER ACCEPTANCE

An order based of this offer is subject to our written acceptance and confirmation of the same.

Discussed with Mr. Nandlal and agreed above rate
16/05/22

CHECK LIST

ACCOUNTED Rate as above

INCLUDED EXTRA N.A.

EXCLUDED EXTRA

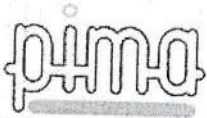
WARRANTY 12 Months

Delivery 100% within 7 days

FOR - JAL BH

Warranty One Year

3 weeks



ANNEXURE II

QUO NO. SQJT/23/00147

SWITCHBOARD/PANEL NAME	800A PDB PANEL		
FEEDER NAME	800A MCCB	1	
BOQDESCRIPTION	MAKE	QTY	TOTAL QTY
800A 3P 55kA MCCB, Release: TM Release(Adjustable Thermal Adjustable Magnetic), Type: 3VA15 ✓	SIEMENS	1	1
Extended Door Mounted Rotary Operator (including 8UD handle) for 3VA25/26 800A/1000A/1250A	SIEMENS	1	1
Spreader Links - Broadened (with phase barriers) (one set = 3 links+ 2 phase barriers) for 3 Pole, 3VA25 800A/1000A	SIEMENS	2	2
Auxiliary Switch (AUX) (1C/O) for 3VA1 800A	SIEMENS	1	1
Tripping Auxiliary Switch (AUX) (1C/O) for 3VA1 800A	SIEMENS	1	1
Green 22.5mm Indicating Lamp with Filament Bulb, Connection with Resistor + Diode,Voltage: 240V AC	TEKNIC	1	1
Red 22.5mm Indicating Lamp with Filament Bulb, Connection with Resistor + Diode,Voltage: 240V AC	TEKNIC	2	2
Amber 22.5mm Indicating Lamp with Filament Bulb, Connection with Resistor + Diode,Voltage: 240V AC	TEKNIC	1	1
Blue 22.5mm Indicating Lamp with Filament Bulb, Connection with Resistor + Diode,Voltage: 240V AC	TEKNIC	1	1
Yellow 22.5mm Indicating Lamp with Filament Bulb, Connection with Resistor + Diode,Voltage: 240V AC	TEKNIC	1	1
Ammeter with 7 Segment LED Display, 3Ph, Acc. Cl: 0.5, Supply Voltage: 230V AC (50/60 Hz), Size: 96X96, Model: MA335-230VAC	SELEC	1	1
Voltmeter with 7 Segment LED Display, 3Ph, Acc. Cl: 0.5, PT Primary: 100V-999kV (Programmable to Any Value), Supply Voltage: 230V AC (50/60 Hz), Size: 96X96, Model: MV334-230V	SELEC	1	1
800/5A Acc.Cl: 1 5VA Tape Wound (Polycarbonate case) RCurrent Transformer,	RISHABH / i-make	1	1
6 sq.mm Grey Slide Link Disconnect and Test New Terminal Block, M4 Screw, Material: Polyamide, Type: CBDT4UN	CONNECTWELL	3	3
6A 1P 10kA C-Curve MCB	SIEMENS	4	4
32A Neutral Link in DIN Rail Channel Mounted terminal	POWERMAT	1	1
FEEDER NAME	250A MCCB	3	
BOQDESCRIPTION	MAKE	QTY	TOTAL QTY
250A 3P 25kA MCCB, Release: TM Release(Fixed Thermal Fixed Magnetic), Type: 3VJ12 (VJ1 250) ✓	SIEMENS	1	3
Extended Rotary Handle (1 set contains rotary mechanism, coupler, shaft and 8UC handle) for 3VJ12 (VJ1 250)	SIEMENS	1	3
Spreader Links (1 Set = 3 nos. links) - 3P for 3VJ12 (VJ1 250)	SIEMENS	2	6
Auxiliary Switch (AUX) (1C/O) for 3VA1 800A	SIEMENS	1	3
6A 1P 10kA C-Curve MCB	SIEMENS	1	3
32A Neutral Link in DIN Rail Channel Mounted terminal	POWERMAT	1	3
FEEDER NAME	100A MCCB	4	
BOQDESCRIPTION	MAKE	QTY	TOTAL QTY
100A 3P 25kA MCCB, Release: TM Release(Fixed Thermal Fixed Magnetic), Type: 3VJ10 (VJ1 125X) ✓	SIEMENS	1	4
Extended Rotary Handle (1 set contains rotary mechanism, coupler, shaft and 8UC handle) for 3VJ10 (VJ1 125X)	SIEMENS	1	4
Spreader Links (1 Set = 3 nos. links) - 3P for 3VJ10 (VJ1 125X)	SIEMENS	2	8
Auxiliary Switch (AUX) (1C/O) for 3VA1 800A	SIEMENS	1	4
6A 1P 10kA C-Curve MCB	SIEMENS	1	4
32A Neutral Link in DIN Rail Channel Mounted terminal	POWERMAT	1	4
FEEDER NAME	MCB FEEDER	5	
BOQDESCRIPTION	MAKE	QTY	TOTAL QTY
6A 3P 10kA C-Curve MCB	SIEMENS	1	5
4 sq.mm Grey Feed Through Screw Clamp Terminal Block, Material: Polyamide, Type: CTS4UN	CONNECTWELL	4	20
FABRICATION DETAILS	MAKE	QTY	UNIT
PANEL SIZE : 0000MM (W) x 0000 + 75MM (H) x 0000MM (D) FABRICATION : 14/16 SWG CRCA Sheet PRE TREATMENT: 7 TANK PROCESS PAINTING: POWDER COATED WITH SIEMENS GREY SHED (RAL 7032) TYPE: INDOOR TYPE, FREE FLOOR RESTING, FIX TYPE, SINGLE FRONT, COMPARTMENTLISED DESIGN, SINGLE DOOR CABLE ENTRY: TOP/BOTTOM (DETACHABLE GLAND PLATE UNDRILLED)	XLRATE	1	JOB



ANNEXURE II

QUO NO. SQJT/23/00147

BUSBAR: PH: 1x000x10, N: 1X000X10, E: 1X00X10 Material: Electrolytic grade Aluminum Current Density: 1 Amp/Sq. mm Insulation: Color coded heat shrinkable Sleeves	XLRATE	1	SET
--	--------	---	-----

Please note: Any additional/specific requirement of the customer which is not considered in above and would be charged extra.

800A PDB Panel - Tentative GA Drawing

Depth 500

Panel	SIZE
WIDTH	1650
HEIGHT	2075
DEPTH	500

Height Size	CABLE ALLEY	METERING	BUSBAR CHAMBER	100A,, TP, MCCB	CABLE ALLEY	Height Size
300		METERING		100A,, TP, MCCB		300
500		800A, TP, MCCB		100A,, TP, MCCB		300
300	CABLE ALLEY	250A, TP, MCCB	BUSBAR CHAMBER	100A,, TP, MCCB	CABLE ALLEY	300
300		250A, TP, MCCB		MCB FEEDER		300
300		250A, TP, MCCB		VACANT		300
300		VACANT		VACANT		200
75						75
2075	250	450	250	450	250	2075
	Total Width					1650

Indent NO: DI 220400318



GEMTECH POWER CONTROL PVT. LIMITED
(AN ISO 9001 CERTIFIED COMPANY)

ELECTRICAL MANUFACTURERS OF : ALL KINDS OF ELECTRIC PANELS (PCC, MCC, APFC, AMF, PDB AC DRIVE, PLC, DG SYNCHRONIZATION), BUS DUCT, RISING MAINS, CABLE TRAYS AND RACEWAYS

ANNEXURE - 'A'

S.No	DESCRIPTION OF ITEM	QTY	Rate	AMOUNT
1	Electrical Oil Panel	1	2,33,631.00	2,33,631.00
			Total Amount	2,33,631.00

ANNEXURE - 'B'

GENERAL TERMS & CONDITIONS: -

1. Payment : 40% Advance with confirmation of order & balance with all Taxes against Performa invoice before dispatch.
2. Completion Period : 4 - 5 Weeks.
3. GST : GST Extra @ 18%
4. GST No./HSN Code : GST No. 06AAECG6141K1ZL /HSN Code 85371000
5. Freight & Insurance : Extra as actual & Insurance Extra @ 0.08%
6. Warranty : One year against any manufacturing defect from date of Supply
7. Installation : Installation & Commissioning of above panel is **not in our scope**.
8. Scope of work : Scope of work is Design, Manufacture & Supply.
9. Validity : Our offer Valid for 30 Days
10. Bank details as below: -

Handwritten notes:
Re. 2,30,000 /
Final Rate
Re. 2,28,000 /

Company Name:	Gemtech Power Control Pvt. Ltd.
Bank:	ICICI Bank
Account No.:	102505002464
IFSC Code:	ICIC0001025
Branch Name:	NIT-1, Faridabad

CHECK LIST

DISCOUNTED Rate

PDF : INCLUDED EXTRA

ED: INCLUDED EXTRA

Tax: 18% Bet

100% Against 7 days lead

FOR-JAC B/w

Warranty: one year

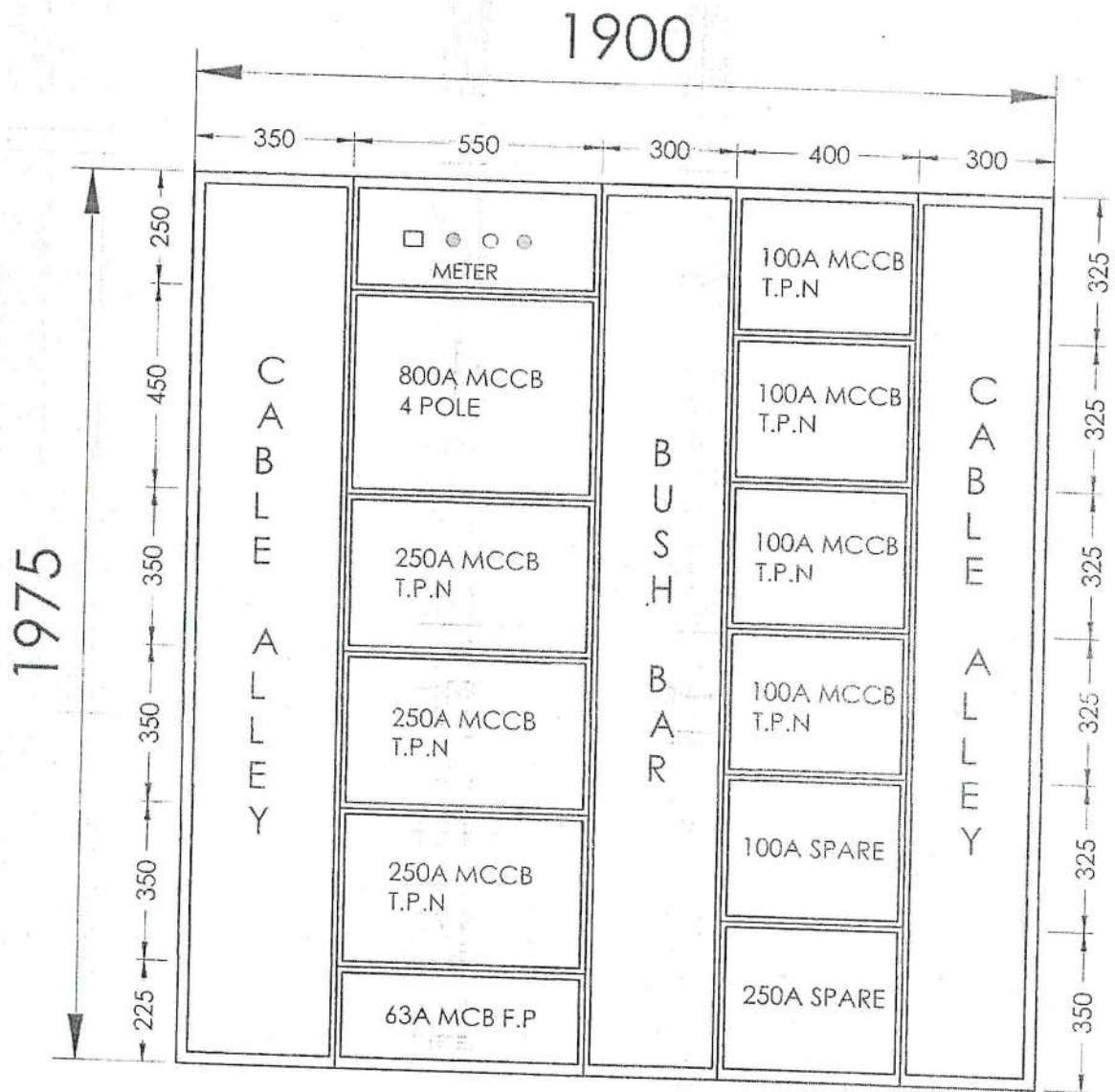
3 weeks

Handwritten notes:
Discussed with Mr. Avaidesh and agreed above

Office & Works Address: Plot No. 11, Gali No. 8 (West), Sarurpur Industrial Area, Sohna Road, Faridabad-121004 (Haryana) India
Phone: +91-129-2230296, **Mobile:** +91-9811609370, +91-9718383731
Email: gemtechpowercontrol@gmail.com, design@gemtechpowercontrol.com
Website: www.gemtechpowercontrol.com

Handwritten notes:
13/4/22

1. Electrical Oil Panel		ANNEXURE:- 'C'		30 April 2022
S.No.	Description OF Items	Qty.	Cat. No.	Make
A				
Main Incomer With Metering & Control				
1	800A FP MCCB 55KA With Thermal Magentic based release having S/C & O/L Protection.	1	3VA1580-5GF42-0AA0	Siemens
2	Spreader links	1	3VA96040QB00*2	Siemens
3	Door Operating Handle	1	3VA9687-0FK21	Siemens
4	Digital Multifunction Meter Class 1.0 (Volts, Amps, PF, THD, F. W. Wh, VA, VAh, Var, Varh, Runhrs, Onhrs, Interrupts, Preloaded Demand & Import /Export) With RS485 Port, 96Sq mm	1	ELITE 445 CL-0.5S	Scure
5	CT 800/5A 15VA Class 1.0 for metering	3	BPL Type	Saviour/Procom
6	CT Shorting Link	3	N/A	Connectwell
7	Phase Indication Light LED RED 220V Ac	1	3SB5285-6HC03	Siemens
8	Phase Indication Light LED AMBER 220V Ac	1	3SB5285-6HL03	Siemens
9	Phase Indication Light LED BLUE 220V Ac	1	3SB5285-6HF03	Siemens
10	Control MCB 6A SP 10 KA	3	5SL41067RC	Siemens
11	Isolating Neutral Link 32A	1	N/A	Pecox
B				
Outgoing Feeders				
1	250A TP+N MCCB 25KA With Thermal Magnetic release having S/C & O/L Protection.	4	3VJ1225-3DB32-0AA0	Siemens
2	Spreader links	4	3VJ9213-0ED00*2	Siemens
3	Door Operating Handle	4	3VJ9218-0HD11	Siemens
1	100A TP+N MCCB 25KA With Thermal Magnetic release having S/C & O/L Protection.	5	3VJ1010-3DB32-0AA0	Siemens
2	Spreader links	5	3VJ9013-0ED00*2	Siemens
3	Door Operating Handle	5	3VJ9018-0HD11	Siemens
1	63A FP 10KA MCB	1	5SL44637RC	Siemens
C				
Cubical Panel				
1	Cubical panel box made out from 16/14 SWG CRCA sheet steel duly powder coated Seimens Grey Colour. Appox. size of panel 1900mm (W) X 1975mm (H) X 600mm (D). Floor Mounted. Front Opreated	1	CRCA Sheet	Gemtech
D				
Bus Bar				
1	Electrolytic Grade Aluminium Busbar with PVC Heat Shrinkable Colour Coated Sleeve Suitable for Incoming & Outgoing Feeders (Main Busbar 800A TPN Aluminium)	1	E91E	Hindalco/Repute d
E				
Wiring				
1	Wiring & Fixing material Pvc Insulated Single Core Industrial Flexible Copper Wire.	1	Flexible Wire	Polycab/KEI
F				
Misc. Items				
1	6" Filter Louver	4	N/A	Pecox
2	Hardware & Legends	1	N/A	RKS/Naveen



GA DRAWING OF OIL PANEL