



QUOTATION

Expert Engineers
Electrical Control Panel Manufactures

Annexure 'I'

From Rate
5745000/-
494000/-

Sr. No	Product Description	Quantity	Unit	Unit Price	Amount
1	LT PANEL	1.00	Nos	574600.00	574600.00
Total Qty:		1.00		Taxable Amount:	574600.00
					SGST: 51714.00
					CGST: 51714.00
					Total Amount: INR 678028.00

Amount In Words: INR SIX LAKHS SEVENTY-EIGHT THOUSAND TWENTY-EIGHT ONLY

Payments Terms

30% ADV, BAL AGAINST PI

Discussed with client
for 6 lakhs and above date
Annexure 'II'
Price Basic!
GST: 12% Basic
Delivery: 06 weeks
Payment:
warranty: one year
against any manufacturing defect

Terms & Conditions:-

* PRICES :

Unless mentioned otherwise in the offer, all prices indicated herein are unit prices for supply Ex works/ F.O.R. Khushkhera basis, exclusive/ inclusive of packing but exclusive of Transit Insurance, GST, Octroi etc "All the above-mentioned charges and levies & any other unforeseen taxes, duties & levies shall be charged extra to the Customer's account at actual at the rates prevailing at the time of invoicing
Statutory Variation of Govt. Taxes, duties, levies etc shall be to customer's account. EXPERT ENGINEERS has quoted the price considering the full quantity order placed on them. In case the Customer wishes to place part quantity, EXPERT ENGINEERS reserve the right to change the offer prices & other terms of supply

The prices quoted are Firm / Subject to the IEEMA Variation Clause without ceiling/ limit, enclosed separately.

The price quoted is strictly for supply of equipment within contractual delivery period but not exceeding from the date of agreed Contractual Delivery Date. The contractual price would be subject to our renegotiation if delivery is delayed beyond the above calendar month, for whatever be the reason

* DELIVERY PERIOD :

The material shall be dispatched from our works within 6-8 weeks from the date of receipt of techno-commercial clear order. The date of dispatch shall be reckoned from the date of receipt of the date of receipt by us of your fully clear order, advance and approval of drawings, whichever is last

The delivery of the equipment is based on the present-day shop-loading and shall be subjected to our confirmation at the time finalization of the order.

The delivery schedule indicated is in good faith and is subject to Force Major Clause

Expert Engineers

G1-287, RIICO Industrial Area Khushkhera, Bhiwadi, Distt Alwar, Bhiwadi, Rajasthan, 01493-298122, 9711377735, sales@expertengineers.co.in



Bill of Materials:

BOQ

1	LT PANEL		BOARD QTY		
A	INCOMER		1	FEE DER QTY	1
SR. NO.	BOQDESCRIPTION	MAKE	CATALOG NUMBER	QTY	TOTAL QTY
1	1250A 3P 50kA Frame Size: 1 MDO ACB, Release: UW-MTX3.5 (LSING + Current Metering) - can be upgraded for Power Metering & Communication, U-Power Omega	L&T	UW112NXD01300	1	1
2	Shunt Release Voltage: 240V AC / 220 - 250V DC	L&T	CL908160B00	1	1
3	1250/5A 15VA Acc. Cl: 1 Ring Type Current Transformer, ID: 30mm	AE	NA	3	3
4	Multifunction Meter (LED display), 3Ph, Parameters: V, A, F, PF, kW, kVA, Old energy, On hours, site selectable kWh/ kVAh, CL: 1, Aux Sup: 90-300V AC/DC, Size: 96X96	L&T	WL4400100000	1	1
5	Red Gen Next Pro LED Indicator 22.5 mm, Voltage: 240V AC	ESBEE	EPLR240A	2	2
6	Yellow Gen Next Pro LED Indicator 22.5 mm, Voltage: 240V AC	ESBEE	EPLY240A	1	1
7	Blue Gen Next Pro LED Indicator 22.5 mm, Voltage: 240V AC	ESBEE	EPLB240A	1	1
8	Green Gen Next Pro LED Indicator 22.5 mm, Voltage: 240V AC	ESBEE	EPLG240A	1	1
9	Amber Gen Next Pro LED Indicator 22.5 mm, Voltage: 240V AC	ESBEE	EPLA240A	1	1
10	6A 1P 10kA C-Curve MCB	SIEMENS	SSL41067RC	3	3
B	O/G-MCCB 250A 3P		1	FEEDER QTY	8
1	250A 3P 35kA MCCB, Release: TM Release(Adjustable Thermal Fixed Magnetic), Type: 3VM12	SIEMENS	3VM12254EE320AA0	1	8
2	Extended Door Mounted Rotary Operator (including 8UC handle) for 3VM12	SIEMENS	3VM9217-0FK51	1	8
3	Spreader Links - Broadened (including phase barriers) (one set = 3 links+ 2 phase barriers) for 3 Pole, 3VM12	SIEMENS	3VM9253-0QC50	2	16
4	250/5A 15VA Acc. Cl: 1 Ring Type Current Transformer, ID: 30mm	AE	NA	3	24
5	Ammeter with Inbuilt selector switch, 3Ph, Acc. CL: 1, Aux Supply: 80-300V AC, Size: 96X96	L&T	WL1310100000	1	8
6	Red Gen Next Pro LED Indicator 22.5 mm, Voltage: 240V AC	ESBEE	EPLR240A	1	8
7	6A 1P 10kA C-Curve MCB	SIEMENS	SSL41067RC	1	8
B	O/G-MCCB 100A 3P			FEEDER QTY	4
1	100A 3P 25kA MCCB, Release: TM Release(Adjustable Thermal Fixed Magnetic), Type: 3VM11	SIEMENS	3VM11103EE320AA0	1	4
2	Extended Door Mounted Rotary Operator (including 8UC handle) for 3VM10/11	SIEMENS	3VM9117-0FK51	1	4
3	Spreader Links - Broadened (including phase barriers) (one set = 3 links+ 2 phase barriers) for 3 Pole, 3VM10/11	SIEMENS	3VM9153-0QC50	2	8
4	100/5A 15VA Acc. Cl: 1 Ring Type Current Transformer, ID: 30mm	AE	NA	3	12
5	Ammeter with Inbuilt selector switch, 3Ph, Acc. CL: 1, Aux Supply: 80-300V AC, Size: 96X96	L&T	WL1310100000	1	4
6	Red Gen Next Pro LED Indicator 22.5 mm, Voltage: 240V AC	ESBEE	EPLR240A	1	4
7	6A 1P 10kA C-Curve MCB	SIEMENS	SSL41067RC	1	4
C	O/G-MCB 63A 4P		1	FEEDER QTY	5
1	63A 4P 10kA C-Curve MCB	SIEMENS	SSL44637RC	1	5
2	63A 4P, Standard Connection Plate (in DMC), Color: Black	FTC	TPN 63-BLK	1	5
A	FABRICATION DETAILS	MAKE	SIZE (HxWxD) mm	QTY	UNIT
1	Panel Enclosure 16/14 Gauge	EXPERT	2175 x 3900 x 600 mm	1	JOB
B	BUSBAR DETAILS	MAKE	RATING	SET	Material
1	BUSBAR - MAIN	HINDALCO	1250A	1	Busbar AL
2	BUSBAR - VERTICAL DROPPER BUSBAR	HINDALCO	1250A	1	Busbar AL
3	BUSBAR - EARTH	HINDALCO	250A	1	Busbar AL

AK ENGINEERING WORKS
J - 1145 Phase III Riico Industrial Area Bhiwadi

QUOTATION FOR 1250A ACB DESTRICTION PANEL

S.No.	DESCRIPTION	MAKE	QTY	RATE	AMOUNT
1	MAIN INCOMER :-				
1	1250 A ACB TP 50 KA EDO 1.5 VA (UW112SXD01800)	L&T	1	119340.00	119340.00
2	On/Off Indicator (LED)	Siemens	3	155.00	465.00
2	METERING :-				
1	MF Meter EM6436NG	Schneider	1	11795.00	11795.00
2	R,Y,G Indicator (LED)	Siemens	3	155.00	465.00
3	Control MCB 6A SP	Siemens	6	210.00	1260.00
4	C.T 1200/5A , CL - 1 5 VA	Rishav/Procom	3	1565.00	4695.00
3	OUT-GOING FEEDER				
1	250 A MCCB TP 36 KA Modle(3VM1340- 4EE32)	Siemens	8	14856.00	118848.00
2	Rotary Handle	Siemens	8	1400.00	11200.00
3	Spreader Link	Siemens	8	1746.00	13968.00
4	On Indicator (LED)	Siemens	8	155.00	1240.00
5	250/5 Amps Meter	Schneider	8	1250.00	10000.00
6	Control MCB 6A SP	Siemens	24	210.00	5040.00
7	C.T 250/5A , CL - 1 5 VA	Rishav/Procom	24	675.00	16200.00
4	OUT GOING FEEDER				
1	100 A MCCB TP 25 KA	Siemens	4	4761.00	19044.00
2	Rotary Handle	Siemens	4	936.00	3744.00
3	Spreader Link	Siemens	4	1040.00	4160.00
4	On Indicator (LED)	Siemens	4	155.00	620.00
5	400/5 Amps Meter	Schneider	4	1250.00	5000.00
6	Control MCB 6A SP	Siemens	12	210.00	2520.00
7	C.T 150/5A , CL - 1 5 VA	Rishav/Procom	12	575.00	6900.00
5	OUT GOING FEEDER				
7	63 TPN MCB 10 KA	Siemens	5	1454.00	7270.00
6	ALUMINIUM BUSBAR				
	Electrical Grade aluminium Bus-Bar 1200 A TPN With Colour Coated H.S sleeve, Bus -Bar insuletor & Hardware Items etc	Hidalco	1	85000.00	85000.00
7	Enclousure Should be made out of 14/16 SWG CRCA sheet Powder coated Colour siemens Gray. OR Demand by the Customer. Size(2025X 1650X1000)	AKEW	1	125000.00	125000.00
8	Meter Wiring, MCB's wiring with ferul, thimble, Pvc Channel, D&C chanel, cable tie, Hardware etc.	Standard	1	25000.00	25000.00
9	Labour & Other Expences				89816.00
	TOTAL AMOUNT Rs. :-				688590.00

→ Price Basis! FOR - JOM BWD
 For . AK ENGINEERING WORKS

→ Delivery! 6 weeks

→ E.T.S.T! 12% Retention

→ Payment: 100% Against Delivery

→ Warranty: one year from the date of
 receipt of Paper

- 1 All Tax Extra
- 2 Advance 50%
- 3 Byalance Payment Agency Deliver
- 4 Freight Extra

Auth. Signatory

Final Rate

Rs. 6,50,000!

*Discussed with
 party and
 agreed
 the*

ANNEXURE - II

EN 2208 00 857

PRICE SCHEDULE FOR SUPPLY OF FOLLOWING PANELS

M/s:-Jindal Aluminium Limited

S. No	Description	Qty	Unit	Unit Quoted Price	Total Quoted Price (Ex-works)
1	Power Distribution Panel (Indoor Type)	1	No.	4,95,600	4,95,600
TOTAL (Basic Price)		1		See 1	4,95,600

→ Party will give technical support for installation of panel
 HSN CODE FOR ELECTRICAL LT PANELS : 85371000
 HSN CODE FOR ELECTRICAL HT PANELS : 85372000 - Rs. 41,65,000/-

Deviation/Clarification

NOTE:-

1.0 Our offer shall be strictly based on attached BOM.

→ Price Basis: FOR-JAL BND

For ZENIYA ELECTECH PVT. LTD.
 Bhiwadi- 301019

→ GST: 18% End use.

→ Delivery: 4 weeks

→ Payment: 100% After receipt and acceptance within 7 days

→ Warranty: One Year

Discussed with
 Mr. Yogesh Jain and
 agreed above rate
 [Signature]
 01/09/22

ANNEXURE - IV

Projects:-

1 Power Distribution Panel (Indoor Type)

Item	Item Description	Rating	Make	Qty.	
	I/C-1250A 3P MDO ACB Feeder				
✓ ACB	TP MDO ACB 50KA Microprocessor based with O/L S/C & E/F Protection Release ✓	1250A ✓	L&T(U-Power)-3.5 ✓	1	No.
MFM	Digital Multifunction Meter CI-1.0 with RS 485 Port	EM6436H	Conzerv ✓	1	No.
MCT	Metering CT -/5A CL-1.0,15VA For Metering	1250A	AE/Kappa ✓	3	Nos.
I/L	Indicating light LED type (RYB)	220V AC ✓	L&T-Esbee ✓	3	Nos.
I/L	Indicating light LED type (ON/OFF)	220V AC ✓	L&T-Esbee ✓	2	Nos.
NL	Neutral Link ✓		Reputed ✓	1	No.
✓ CMCB	Control SP MCB 10KA C-Curve	6A	Siemens ✓	4	Nos.
	FWF Exhaust Fan		Reputed	1	No.
✓ CMCB	Control SP MCB 10KA C-Curve	6A	Siemens ✓	1	No.
	O/G:FP MCB Feeder				
✓ MCB	FP MCB 10ka -Curve	63A	Siemens ✓	5	Nos.
	O/G:100A TP MCCB Feeder				
✓ MCCB	TP MCCB 25ka Thermal Magnetic based with O/L & S/C Protection Release	100A ✓	Siemens 3VM11	4	Nos.
MCCB	Spreader Link +Extended Rotary Handle -TP	100A ✓	Siemens 3VM11	4	Nos.
AM	Digital Ammeter inbuilt Selector Switch CI-1.0	DM3110	Conzerv	4	Nos.
MCT	Metering CT -/5A CL-1.0,5VA For Metering	100A	AE/Kappa	12	Nos.
I/L	Indicating light LED type (ON)	220V AC	L&T-Esbee	4	Nos.
NL	Neutral Link		Reputed	4	Nos.
CMCB	Control SP MCB 10KA C-Curve	6A	Siemens	16	Nos.
	O/G:250A TP MCCB Feeder				
✓ MCCB	TP MCCB 36ka Thermal Magnetic based with O/L & S/C Protection Release	250A ✓	Siemens 3VM12	8	Nos.
✓ MCCB	Spreader Link +Extended Rotary Handle -TP	250A	Siemens 3VM12	8	Nos.
AM	Digital Ammeter inbuilt Selector Switch CI-1.0	DM3110	Conzerv	8	Nos.
MCT	Metering CT -/5A CL-1.0,5VA For Metering	250A	AE/Kappa	24	Nos.
I/L	Indicating light LED type (ON)	220V AC	L&T-Esbee	8	Nos.
NL	Neutral Link		Reputed	8	Nos.
✓ CMCB	Control SP MCB 10KA C-Curve	6A ✓	Siemens	32	Nos.
	O/G:Vacant Feeder Space Provision Only For Future Use.			4	Nos.
T	Door limit switch with LED Light		Reputed	4	Nos.
CMCB	Control SP MCB 10KA C-Curve	6A	Siemens	4	Nos.
	Panel Dimension(2275HX3150WX1000D) ✓				
	Electrolytic grade TPN Aluminium Horizontal Bus Bar 1250A(1600Sq.mm) -Each Phase-2x80x10mm,Neutral-1x80x10mm,Earth-1x50x6mm				



ZENIYA ELECTECH PVT. LTD.

Mfg of:

Power Distribution Panel, Motor Control Panel,
PLC/Process/Instrumentation Panel,
AC/DC Variable Speed Drive, IDMT Relay Testing,
Power Factor Correction Panel & TTA -IEC-61439 Panel

Office:

E-1098, Ajanta Chowk , Opp. Kamdhenu
Steels,PH-III RIICO Ind. Area, Bhiwadi-301019
Distt. Alwar (Raj.)

Ref.: -ZEPL/2022-23/BKY/362-R2

Date: 23/08/2022

M/s:-Jindal Aluminium Limited
Bhiwadi

Kind Attn. Mr.Rajgopal. C. Sarada./Vikram Jeet (Mob.No.:-+91 9611-195-368)

Sub. : Our offer for your requirement of Power Distribution Panel A/c Jindal Aluminium Project at Bhiwadi.

Dear Sir,

We acknowledge with thanks receipt of your subject enquiry and are pleased to submit our Techno-Commercial offer under following annexures:

- 1 . Annexure-I : Technical Specification
- 2 . Annexure-II : Price Schedule
- 3 . Annexure-III : General Terms & Conditions.
- 4 . Annexure-IV : Bill of Material.

We are the system house for medium voltage of ABB & system integrators of ABB for totally type tested assembly (TTA) Panels as per IEC 61439-1 & 2

We hope you will find our offer competitive and look forward to receive your valued order in our favour.

Thanking You,

Sandeep Yadav
Manager-Estimations & Tendering
7340019364
mail: info@zeniyagroup.com

For ZENIYA ELECTECH PVT. LTD.
Bhiwadi- 301019



GEMTECH POWER CONTROL PVT. LIMITED

(AN ISO 9001 CERTIFIED COMPANY)

ELECTRICAL MANUFACTURERS OF : ALL KINDS OF ELECTRIC PANELS (PCC, MCC, A, PFC, AMF, PDB AC DRIVE, PLC, DG SYNCHRONIZATION), BUS DUCT, RISING MAINS, CABLE TRAYS AND RACEWAYS

ANNEXURE - 'A'

S.No	DESCRIPTION OF ITEM	QTY	Rate	AMOUNT
1	Distribution Panel for Ageing Oven	1	4,84,722.00	4,84,722.00
Total Amount				4,84,722.00
Freight up to Bhiwadi				4,500.00
Nett Amount				4,89,222.00

Final Rate
Rs. 4,85,000/-

ANNEXURE - 'B'

GENERAL TERMS & CONDITIONS: -

1. Payment : 40% Advance with confirmation of order & balance with all Taxes against Performa invoice before dispatch.
2. Completion Period : 5 - 6 Weeks after Drawing Approval
3. GST : GST Extra @ 18%
4. GST No./HSN Code : GST No. 06AAECG6141K1ZL /HSN Code 85371000
5. Freight & Insurance : Inclusive above price (Up to Bhiwadi)
6. Warranty : One year against any manufacturing defect from date of Supply
7. Installation : Installation & Commissioning of above panel is **not in our scope**.
8. Scope of work : Scope of work is Design, Manufacture & Supply.
9. Validity : Our offer Valid for 30 Days → *Price Basis: FOR-JAL B*
 → *IGST: 18% Extra*
10. Bank details as below: -

Company Name:	Gemtech Power Control Pvt. Ltd.
Bank:	ICICI Bank → <i>Delivery 5 weeks</i>
Account No.:	102505002464
IFSC Code:	ICIC0001025
Branch Name:	NIT-1, Faridabad

F/MKT/02, Issue No.1, Page 2 of 2

Office & Works Address: Plot No. 11, Gali No. 80 (West), Sarurpur Industrial Area, Sohna Road, Faridabad-121004 (Haryana) India

Phone: +91-129-2230296, Mobile: +91-9811609370, +91-9718383731

Email: gemtechpowercontrol@gmail.com, design@gemtechpowercontrol.com

Website: www.gemtechpowercontrol.com

with Mr. Gupta
Payment: 40% Advance & balance after receipt of invoice referred within 7 days
Warranty: one year against manufacturing defects.
10/10/20

Ref. No. GEM/JA/2022-23/SK/A-493(R3)				22 August 2022
1 Distribution Panel for Ageing Oven		ANNEXURE:- 'C'		
S.No.	Description OF Items	Qty.	Cat. No.	Make
A Main Incomer				
1	1250A TP MDO ACB 50KA With Microprocessor based with O/L S/C & E/F Protection Release	1	UW112NXD0130	L.&T-Omega MTX 3.5
2	Indicating light LED type (ON/OFF) 220V AC	2	3SB5285-6HC03+3SB5285-6HE03	Siemens
B Metering				
1	Digital Multifunction Meter CI-1.0 with RS 485 Port. 96sq mm (Cat. No. EM6436NG)	1	METSEEM6436HCL10 RS	Conzerv
2	Phase Indication Light LED RED 220V Ac	1	3SB5285-6HC03	Siemens
3	Phase Indication Light LED AMBER 220V Ac	1	3SB5285-6HL03	Siemens
4	Phase Indication Light LED BLUE 220V Ac	1	3SB5285-6HF03	Siemens
5	Control MCB 6A SP 10 KA	6	5SL41067RC	Siemens
6	Isolating Neutral Link 32A	1	N/A	Pecox
7	Metering CT 1200/5A CL-1.0, 15VA For Metering	3	BPL Type	Procom
B Outgoing Feeders				
O/G:250A TP MCCB Feeder				
1	250A TP MCCB 36kA Thermal Magnetic based with O/L & S/C Protection Release	8	3VM12254EE320AA0	Siemens
2	Extended Rotary Handle	8	3VM9217-0FK51	Siemens
3	Spreader Link	8	3VM9253-0QC50*2	Siemens
4	ON Indicating light LED type 220V AC	8	3SB5285-6HC03	Siemens
5	Digital Ammeter inbuilt Selector Switch CI-1.0	8	DM3110	Conzerv
6	6A Control SP MCB 10KA C-Curve	8	5SL41067RC	Siemens
7	Metering CT 250/5A CL-1.0, 10VA For Metering	24	BPL Type	Procom
8	Neutral Link 32A	8	N/A	Pecox
O/G:100A TP MCCB Feeder				
1	100A TP MCCB 25kA Thermal Magnetic based with O/L & S/C Protection Release	4	3VM11103EE320AA0	Siemens
2	Extended Rotary Handle	4	3VM9117-0FK51	Siemens
3	Spreader Link	4	3VM9153-0QC50*2	Siemens
4	ON Indicating light LED type 220V AC	4	3SB5285-6HC03	Siemens
5	Digital Ammeter inbuilt Selector Switch CI-1.0	4	DM3110	Conzerv
6	6A Control SP MCB 10KA C-Curve	4	5SL41067RC	Siemens
7	Metering CT 100/5A CL-1.0, 5VA For Metering	12	BPL Type	Procom
8	Neutral Link 32A	4	N/A	Pecox
O/G:FP MCB Feeder				
1	63A FP 10KA MCB	5	5SL44637RC	Siemens
1	O/G MCCB : Vacant Feeder Space Provision Only For Future Use.	4 Nos.		
C Cubical Panel				
1	Cubical panel box made out from 16/14 SWG CRCA sheet steel duly powder coated Seimens Grey Colour. Appox. size of panel 3500mm (W) X 2100mm (H) X 900/600mm (D). Floor Mounted. Front Opreated	1	CRCA Sheet	Gemtech
D Bus Bar				
1	Electrolytic Grade Aluminium Busbar with PVC Heat Shrinkable Colour Coated Sleeve Suitable for Incoming & Outgoing Feeders (Main Busbar 1250A TPN Aluminium)	1	E91E	Hindalco
E Wiring				
1	Wiring & Fixing material Pvc Insulated Single Core Industrial Flexible Copper Wire.	1	Flexible Wire	Polycab/KEI
F Misc. Items				
1	8" Exhaust Fan with Canopy	1	N/A	Rexnord
2	6" Louver	3	N/A	Pecox
3	LED Light with Door Switch, MCB	4	Led Type	Havells
4	Space Heater with Thermostat with 6A DP MCB	1	N/A	Hotwell/Elcon
5	Power Socket	1	N/A	Anchor
6	Hardware & Legends	1	N/A	RKS/Navcen

A B C D



M/S GEMTECH POWER CONTROL PVT. LTD.

MANUFACTURERS OF:-

ALL KINDS OF ELECTRIC PANELS (PCC, MCC, APFC, AMF, PDB, AC DRIVE, PLC, DG SYNCHRONIZATION), BUS DUCT, RISING MAINS, CABLE TRAYS & RACEWAYS
Office and Works Address: Plot No. -11, Gali No-8 (West), Sarurpur Industrial Area, Sohna Road, —HARYANA 121004

Phone: +91-129-2230296; Mobile: +91 9268829370

Email : gemtechpowercontrol@gmail.com, Website. www.gemtechpowercontrol.com

CLIENT :-

M/S JINDAL ALUMINIUM

PROJECT :-

TITLE :-

GA & SLD DRAWING OF ELECTRICAL PANEL'S

CLIENT :- M/S JINDAL ALUMINIUM

GEMTECH POWER CONTROL PVT. LTD.

PROJECT : -----

DRAWING DESCRIPTION : TITLE PAGE/COVER SHEET

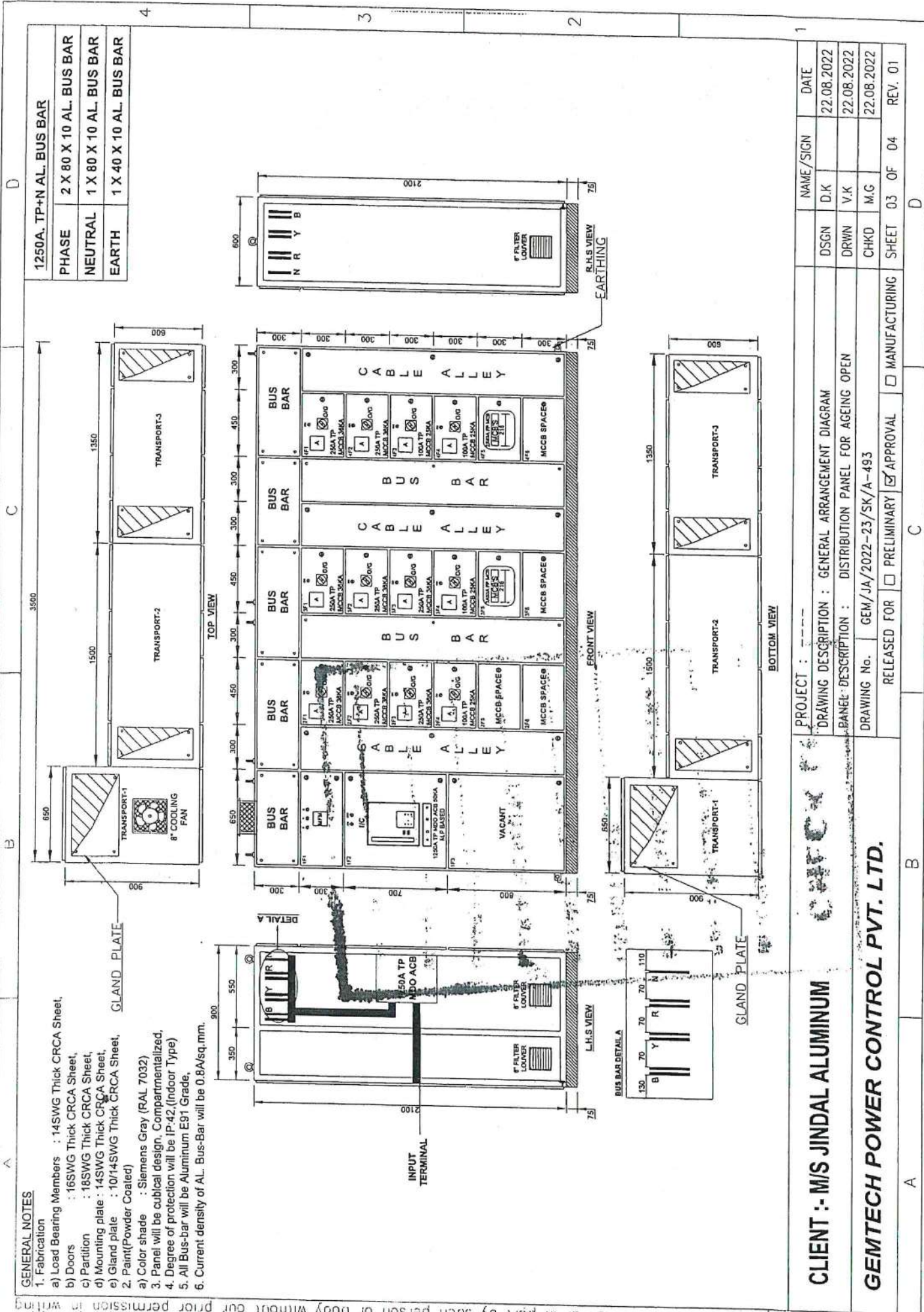
DRAWING No. GEM/JA/2022-23/SK/A-493

RELEASED FOR PRELIMINARY APPROVAL MANUFACTURING

NAME/SIGN	DATE
DSGN D.K	22.08.2022
DRWN V.K	22.08.2022
CHKD M.G	22.08.2022
SHEET 01 OF 4	REV. 01

This drawing & document is the property of GEMTECH POWER CONTROL PVT. LTD. must not be passed on to any person or body not authorised by us to receive it nor be copied or otherwise made use either in full or in part by such person or body without our prior permission in writing.

A B C D



GENERAL NOTES

1. Fabrication
 - a) Load Bearing Members : 14SWG Thick CRCA Sheet,
 - b) Doors : 16SWG Thick CRCA Sheet,
 - c) Partition : 18SWG Thick CRCA Sheet,
 - d) Mounting plate : 14SWG Thick CRCA Sheet,
 - e) Gland plate : 10/14SWG Thick CRCA Sheet,
 2. Paint(Powder Coated)
 - a) Color shade : Siemens Gray (RAL 7032)
3. Panel will be cubical design. Compartmentalized,
4. Degree of protection will be IP-42;(Indoor Type)
5. All Bus-bar will be Aluminum E91 Grade,
6. Current density of AL. Bus-Bar will be 0.8A/sq.mm.

1250A. TP+N AL. BUS BAR	
PHASE	2 X 80 X 10 AL. BUS BAR
NEUTRAL	1 X 80 X 10 AL. BUS BAR
EARTH	1 X 40 X 10 AL. BUS BAR

PROJECT : ---		NAME / SIGN	DATE
DRAWING DESCRIPTION : GENERAL ARRANGEMENT DIAGRAM		D.K	22.08.2022
PANEL DESCRIPTION : DISTRIBUTION PANEL FOR AGEING OPEN		V.K	22.08.2022
DRAWING No. GEM/JA/2022-23/SK/A-493		M.G	22.08.2022
RELEASED FOR <input type="checkbox"/> PRELIMINARY <input checked="" type="checkbox"/> APPROVAL <input type="checkbox"/> MANUFACTURING		SHEET 03 OF 04	REV. 01

CLIENT :- M/S JINDAL ALUMINIUM

GEMTECH POWER CONTROL PVT. LTD.

This drawing & document is the property of GEMTECH POWER CONTROL PVT. LTD. must not be passed on to any person or body not authorised by us to receive it nor be copied or otherwise made use either in full or in part by such person or body without our prior permission in writing.