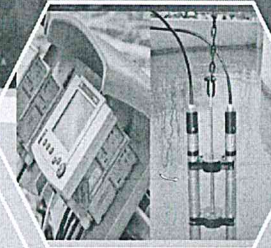


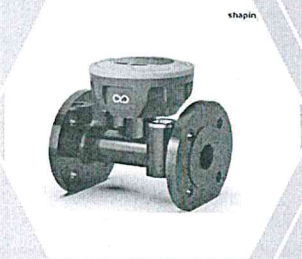


DEEWAN ENTERPRISES

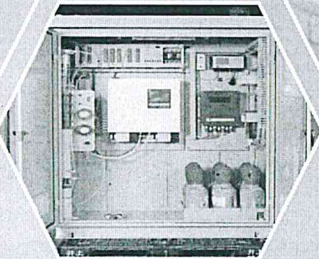
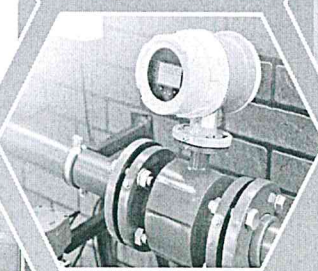
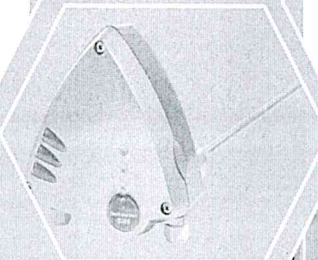
- ❖ Continuous Ambient Air Quality Monitoring System
- ❖ Continuous Emission Monitoring
- ❖ Online Continuous Effluent Monitoring System
- ❖ Liquid/Gas Flow Measurement
- ❖ Retrofitted Emission Control Device
- ❖ Level Measurement Device
- ❖ Onsite Calibration Services (NABL/FCRI)



- 1. Handheld controller with built-in GPS/GPRS module
- 2. 1000mAh rechargeable battery
- 3. 1000mAh power bank
- 4. 1000mAh power bank
- 5. 1000mAh power bank
- 6. 1000mAh power bank
- 7. 1000mAh power bank



shapin

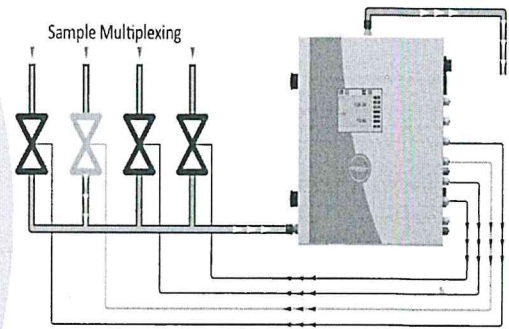


DEEWAN ENTERPRISES

WE MAKE IT HAPPEN

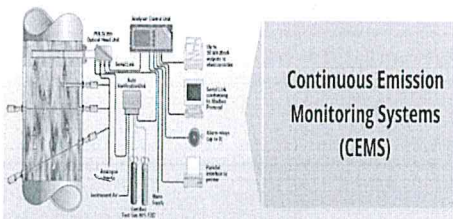
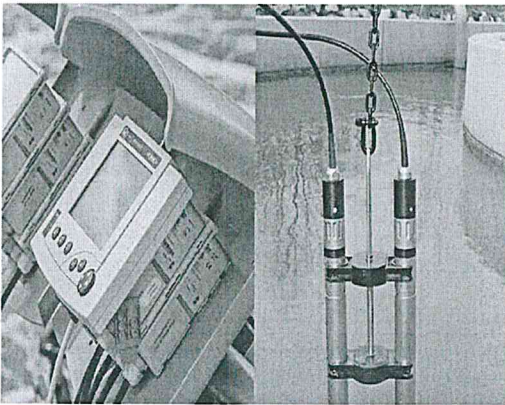
UV-300 ONLINE WATER ANALYZER

- Color graphic display 320x240 pixels with touch screen
- Built-in data logger, memory 5000 measurements for each parameter
- 12 sockets for input and output modules (not included, refer to options)
- 7 available glands for inputs / outputs
- RS232 included (Sub-D 9 ways female connector) with 2 meters cable for PC RS485 included for the connection of external probes
- USB port included for USB key connection Automatic cleaning system with 2-litres tank
- Power supply 90-260 VAC 47-63 Hz with power cord 2 meters
- Enclosure IP65/Nema4X 420x360x200 mm (HxWxD) / 15 to 20 kg



Measuring Parameters

BOD, COD, TSS, pH, TOC, Nitrite, Color, Oil & Grease, P3, CL, Al, Fe, Si, ORP, Turbidity, DO, Conductivity, Temperature etc.



Continuous Emission Monitoring Systems (CEMS)

ONLINE CONTINUOUS EFFLUENT MONITORING SYSTEM

- ❖ Sensor made of Titanium
- ❖ Ultrasonic cleaning of carbowish sensors
- ❖ System-wide lightning protection
- ❖ Modular expansion from 1 to 20 sensors
- ❖ One cable for power and communications
- ❖ System redundancy for backup control
- ❖ Meets the 7/11 Guidelines issued by CPCB Full spectrum scanning of the measured signal for accurate reading
- ❖ River monitoring is also possible
- ❖ We also supply all types of online/portable water quality sensors for process control & DM water application

THE SYSTEM 2020 XT 3G

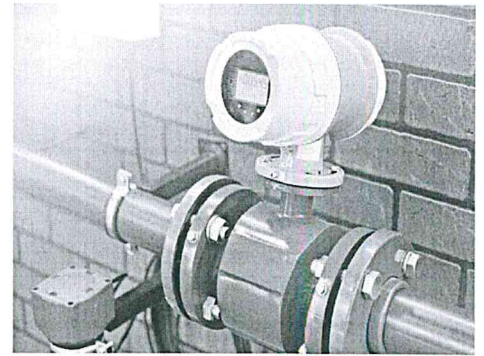
- ❖ Up to 20 digital sensors, any combination
- ❖ Easy, intuitive system expansion
- ❖ Centralized power supply along entire network
- ❖ Numerous relays and outputs may be selected
- ❖ Communications via modem, Bluetooth, radio transmission, PROFIBUS, MODBUS, RS-232 Integrates into existing systems

Measuring Parameter

COD, BOD, ORP, Conductivity, Temperature, DOC, SAC, Turbidity, TSS, Ammonium, Nitrate, COD, BOD, TOC, Dissolved Oxygen, pH etc.

Electromagnetic Flow Meter

- ❖ Display – Digital
- ❖ Liner – PTFE/Rubber
- ❖ Output - RS485 / 4-20 mA / Hart (Optional)
- ❖ Enclosure - Aluminum Die Cast
- ❖ Compatibility – CPCB/CGWA
- ❖ Mounting – Integral/Remote
- ❖ Make - DEEWAN, ABB, SIEMENS, Adept

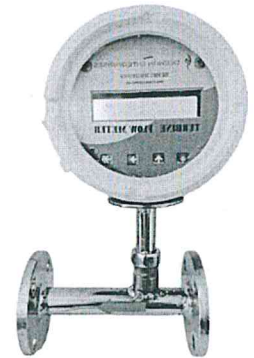


Ultrasonic Level Transmitter

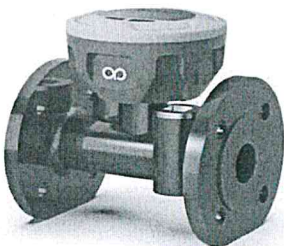
- ❖ Maintenance free, non-contact continuous level sensor
- ❖ 2-wire instrument with HART digital communication
- ❖ Up to 10 m measurement range
- ❖ Wide temperature range of -40 to 85 °C
- ❖ Accuracy of ± 2 mm or 0.2 % of full span (the larger one)
- ❖ Beam angle as low as 5° with false echo filtering for narrow spaces

Turbine Flow Meter

- ❖ Simple & cost effective construction
- ❖ Suitable for non-conductive clear liquid
- ❖ Local display as 16x2 LCD
- ❖ Durable and Versatile
- ❖ Die Cast Aluminum IP-68 Housing
- ❖ 6) Remote display optionally available
- ❖ 4-20mA and RS 485 output



shaping water



Dhara Smart Ultrasonic Water Meter

- ❖ Ultrasonic Technology
- ❖ Battery Operated
- ❖ Inbuilt GPRS/4G
- ❖ IP68 Rating
- ❖ High Accuracy
- ❖ Tamper Proof
- ❖ CGWA Complaint
- ❖ ISO Certified
- ❖ Online logbook

Some Of Our Valuable Clients



DEEWAN ENTERPRISES (Established-2018)

- Manufacturer
- Industrial equipment Supplier
- Service Provider

CERTIFICATION

- ISO 9001-2015
- ISO 14001-2015
- TRUSTSEAL Verified
- MSME Registered
- Cosmic (Auth. Dealer)

FOCUS & OBJECTIVES

- Quality Product
- Cost Effective Solutions
- Environment Friendly Services

Address : 36 , Ground Floor Krishan Lal Complex ,Near Barsi Gate,Hansi Hisar (HR)

Web : www.deewanenterprises.com

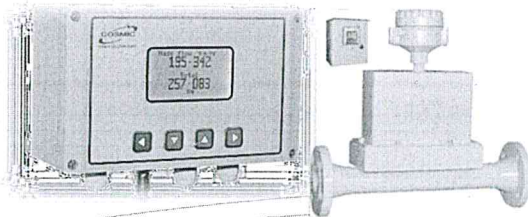
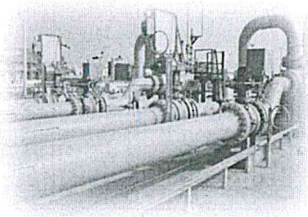
Mail : info@deewanenterprises.com

sales@deewanenterprises.com

Contact : +91-7206110005 +91-8307940066 +91-9817528900



Approved By ISO 9001-2015



COSMIC
GMFM 1000

GAS MASS FLOW METER

LPG, Propane & Natural Gas

MULTI PARAMETER GRAPHICAL DISPLAY

- **VOLUME FLOW, m3/hr**
- **MASS FLOW, kg/hr**
- **GAS PRESURE**
- **GAS TEMPERATURE**
- **GAS DENSITY**
- **STD FLOW, Sm3/hr**
- **STD TOTAL, Sm3**
- **MASS TOTAL, kg**
- **4-20 mA (MASS FLOW)**
- **RS 485 MODBUS PORT**
- **IP66 DISPLAY PANEL**
- **RETENTIVE TOTAL**
- **DN15 TO DN500**
- **PC MONITORING SOFTWARE**

EVC FOR DYNAMIC PRESSURE & TEMPERATURE COMPENSATION

REMOTE WALL MOUNTED OR PANEL MOUNTED DISPLAY

Accurate & Reliable...Industrial Grade

Specializing in Industrial Gas Flow Instrumentation, with hundreds of successful installations, we manufacture the most reliable and accurate flow meters for LPG & Natural Gas applications.

Based on International Standards

Designed and manufactured as per ISO 5167, the most preferred world standard for differential pressure flow metering recommended even for critical custody transfer applications of hydrocarbon gases.

Fast & Easy set up

Factory pre-configured for individual customer and application...the system is delivered in pre-assembled condition and is operational within minutes of installation.

Remote Multi-Parameter Graphical Display Unit

We understand that reading flow meters installed on difficult to reach pipelines can be an issue sometimes. Our full function Back lit LCD Graphical Display remote display is an excellent feature which allows the display to be connected and placed up to 500 meters from the flow meter.

Rugged, Stainless Steel Construction

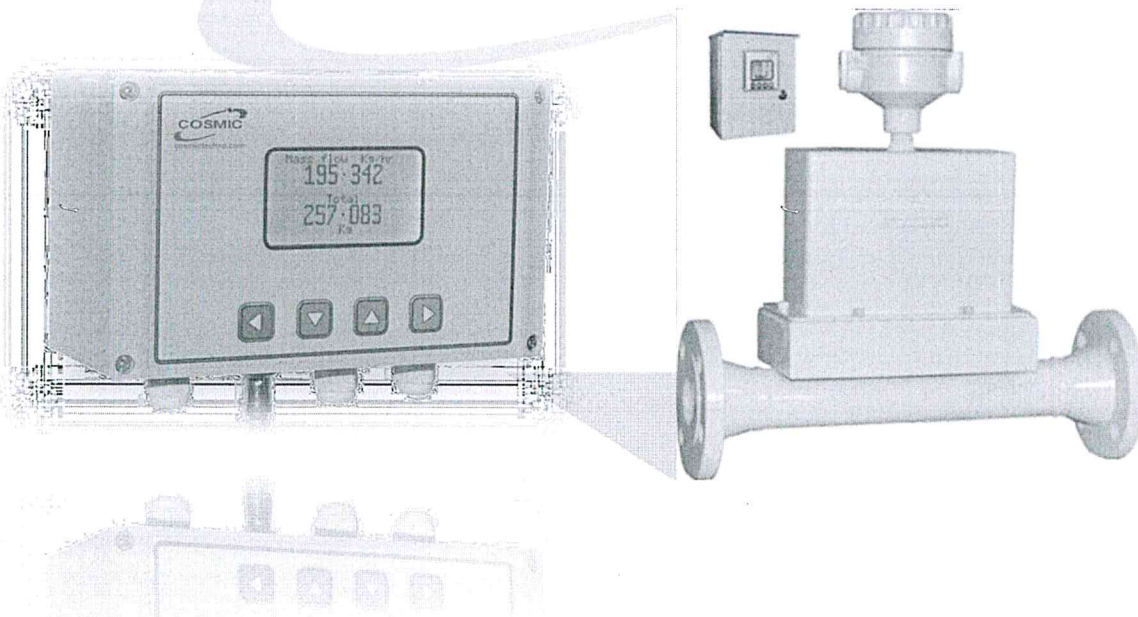
Manufactured with Stainless Steel & Class 150 flanges for long life and superior finish

Exceptional Customer Support

Our dedicated & experienced application specialists discuss every aspect of your requirement. It's a solution that we wish to provide you, not just a product!

Specifications GMFM 1000

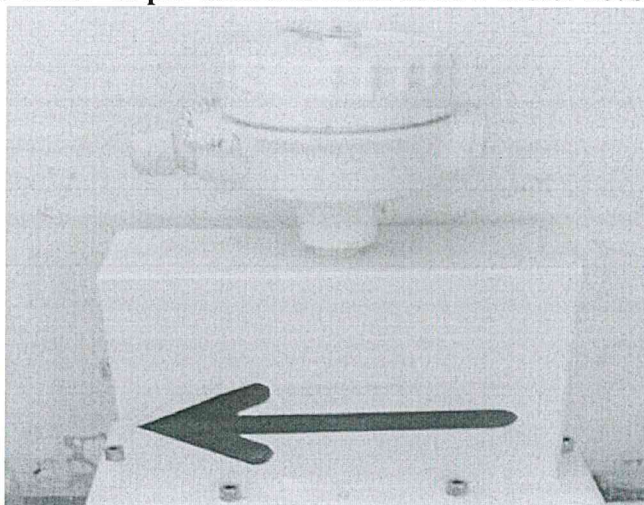
• Size	DN 15 to DN 300
• Technology	Differential Pressure
• Flow Element	Orifice/Integral Orifice
• MOC	SS304, SS316, CS
• Density Compensation	On line dynamic density computation
• No. of DP Tapping	One pair
• Design standard	ISO 5167
• Accuracy	+/- 2 % full scale depending on installation.
• Repeatability	+/- 0.2 %
• Output	4-20 mA DC
• Communication port	RS485
• Protocol	MODBUS RTU
• Power Supply	90~265V AC, 50-60 Hz
• Ambient temperature	0 to 60 deg C
• Nominal pressure	Up to 16 Bar G (higher on request)
• Process Connection	Flanged



INSTALLATION GUIDELINE

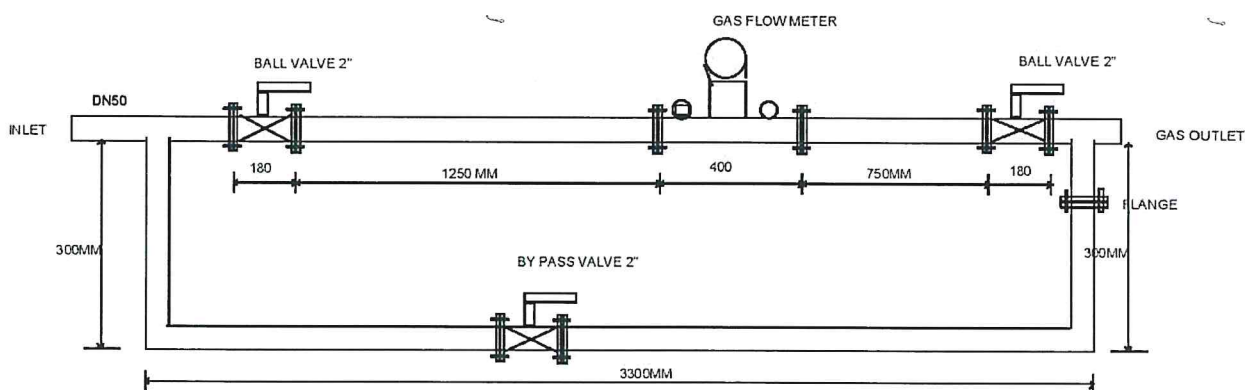


1. Install flow meter as per direction mark at flow meter housing.



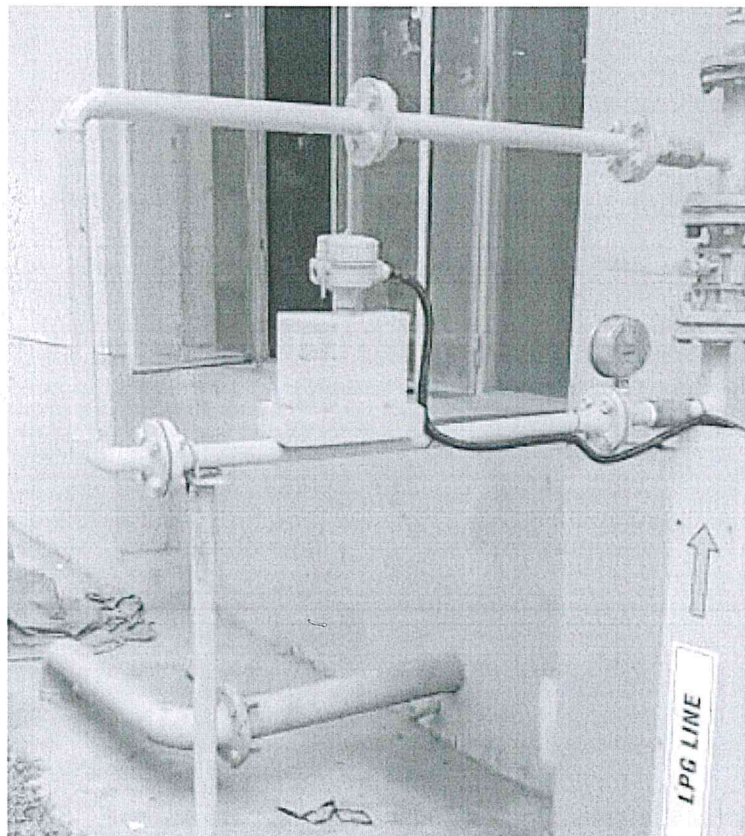
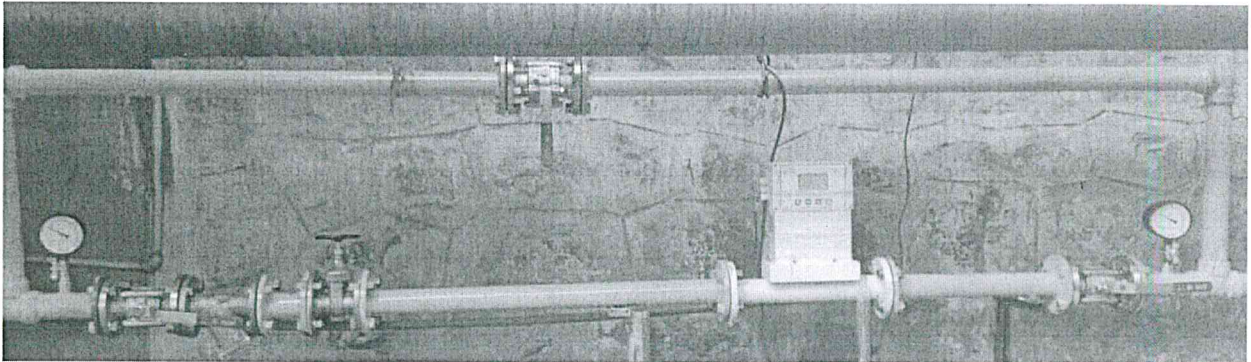
2. Install flow meter in horizontal position if horizontal space is not available then install in vertical position.
3. Use UPS power supply for gas mass flow meter.
4. Flow meter assembly and indicator serial number should be match.
5. Maintain upstream and downstream straight pipe length for laminar flow detected. Elbows, tees, valves, fans and pumps are some of the most common causes of large scale turbulence in pipe systems.

NOTE : Minimum 10D in upstream and 5D in downstream straight run recommended.



Cosmic Technologies, Plot No.80, Industrial Area Phase-9, Mohali -160062, Punjab,
Phone+91-172-5096230 Mob No. +91-8284008656 Email:sunil@cosmictechno.com
www.cosmictechno.com.

Site installations



**Cosmic Technologies, Plot No.80, Industrial Area Phase-9, Mohali -160062, Punjab,
Phone+91-172-5096230 Mob No. +91-8284008656 Email:sunil@cosmictechno.com
www.cosmictechno.com.**