

Load Factor



Airmen Engineers & Services Private Limited

Plot No. A-14A, Bir Singh Colony, Near White Temple, Budh Vihar Phase - 2, Near Rohini Sector 24, Delhi
CIN-U74999DL2017PTC317234

E Mail : sales@airmen.in, karan@airmen.in, (www.airmen.in)

Authorised Dealer for KAESER COMPRESSOR (INDIA) PVT LTD

ANNEXURE: - 1 - PRICE AND COMMERCIAL TERMS & CONDITIONS

FOR COMPRESSORS (250 CFM, 485 CFM- FIXED SPEED AND SIGMA FREQUENCY CONTROL)

SR. NO.	DESCRIPTION	QTY	HSN CODE, GST -18%	Delivery from on Pune plant./ UNIT PRICE
08460120 1.	SCREW AIR COMPRESSOR - Air cooled: KAESER make direct driven, single stage fluid cooled air end with world renowned sigma profile heavy duty stationary screw air compressor each having a FAD of 247 cfm (7.00 m3/min) at 7.5 bar (g) and maximum working pressure of 8.5 bar (g) at the outlet, driven by Electric motor of 37 kW rated output. The FAD will be guaranteed as per ISO 1217 Addition4, 2009	NON VFD 250 CFM BSD-75 1 No. 1590X1030X1700 (WxDxH) 985 kgs.	84148090	Agreed Rate Rs. 9,33,850 Rs. 13,66,000/=
fractured 2.	<u>SFC (Sigma Frequency Control)</u> SCREW AIR COMPRESSOR - Air cooled: KAESER make direct driven with Sigma-Frequency Control, single stage fluid cooled air-end with world renowned sigma profile heavy duty stationary screw air compressor each having a FAD of 54-263 cfm (1.54-7.44 m3/min) at 7.5 bar (g) and maximum working pressure of 8.5 bar (g) at the outlet, driven by Electric motor of 37 kW rated output. The FAD will be guaranteed as per ISO 1217 Addition4, 2009	VFD 250 CFM BSD-75 SFC 1 No. Semi Drive	84148090	08460120 Rs. 22,06,000/= Rs. 15,08,600/=
06680389 3.	SCREW AIR COMPRESSOR - Air cooled: KAESER make direct driven, single stage fluid cooled air end with world renowned sigma profile heavy duty stationary screw air compressor each having a FAD of 485 cfm (13.74 m3/min) at 7.5 bar (g) and maximum working pressure of 8.5 bar (g) at the outlet, driven by Electric motor of 75 kW rated output. The FAD will be guaranteed as per ISO 1217 Addition4, 2009	Fixed CSDX-140 1 No. 2110X1290X1950 (WxDxH) 1830 kg	84148090	Rs. 14,86,750 Rs. 21,74,000/=



Airmen Engineers & Services Private Limited

Plot No. A-14A, Bir Singh Colony, Near White Temple, Budh Vihar Phase - 2, Near Rohini Sector 24, Delhi
CIN-U74999DL2017PTC317234

E Mail : sales@airmen.in, karan@airmen.in, (www.airmen.in)

Authorised Dealer for KAESER COMPRESSOR (INDIA) PVT LTD

TOTAL SOLUTION OF COMPRESSED AIR REQUIREMENT

This refers to the telephonic discussions we had today for your requirement of compressed air system; we are hereunder submitting Techno-Commercial offer for **KAESER** make Compressed Air System (Air Compressor, Refrigerated Air Dryer, Micro Filter & Air Receiver) suitable to your requirement:

ANNEXURE-1: Price and Commercial Terms Conditions.

ANNEXURE-2: Scope of Supply and Technical Specification.

We trust our enclosed offer is in line with your requirement. If you require any further techno-commercial justification/clarification, please feel free to contact us. Thanking you & assuring you of best of our services at all the times, we remain.



Airmen Engineers & Services Private Limited

Plot No. A-14A, Bir Singh Colony, Near White Temple, Budh Vihar Phase - 2, Near Rohini Sector 24, Delhi
CIN-U74999DL2017PTC317234

E Mail : sales@airmen.in, karan@airmen.in, (www.airmen.in)

Authorised Dealer for KAESER COMPRESSOR (INDIA) PVT LTD

4.	<p>SFC (Sigma Frequency Control) SCREW AIR COMPRESSOR - Sigma Frequency Control, Air cooled: KAESER make direct driven, single stage fluid cooled air end with world renowned sigma profile heavy duty stationary screw air compressor each having a FAD of 122 CFM-472 CFM (3.46-13.37 m³/min) at 7.5 bar (g) and maximum working pressure of 8.5 bar (g) at the outlet, driven by Electric motor of 75 kW rated output. The FAD will be guaranteed as per ISO 1217 Addition 4, 2009</p>	<p>CSDX-140 SFC 1 No. 2110x1290x1950 (WxDxH) 1650 kg</p>	<p>84148090</p>	<p>Rs. 36,64,000/=</p> <p><i>Agreed Rate</i> Rs. 25,06,100/-</p>
5.	<p>KAESER make Extra Coalescences filter to bring down the Oil Vapour and Particle size down to 0.01 mm which is better than class-1 to ISO 8573-1 (2001) for.</p>	<p>F-83-KE 1 No.</p>	<p>84213990</p>	<p>Rs. 66,000/=</p>
6.	<p>KAESER make Activated Carbon filter to bring down the Oil Vapour content down to 0.01 mg/m³ and particle size down to 0.001 mm which is better than class-1 to ISO 8573-1 (2001) for.</p>	<p>F-320-KE 1 No.</p>	<p>84213990</p>	<p>Rs.1,65,000/=</p>

FOR DRYERS (500 CFM, 600 CFM, 1000 CFM)

SR. NO.	DESCRIPTION	QTY	HSN CODE,GST -18%	Delivery from on Pune plant./ UNIT PRICE
1.	<p>REFRIGERATED AIR DRYER; KAESER- make refrigeration air dryer that is developed for reduced energy consumption & optimization of reliability and user friendliness. This Air Dryer is suitable for above air compressor at air inlet temperature of 50 deg C to the air dryer and ambient temperature to 45 deg. Flow Rate- 23 m³/min.</p>	<p>TF-230 1 No. 500 CFM</p>	<p>84211999</p>	<p>Rs. 10,70,000/=</p> <p>Rs. 731500/-</p>
2.	<p>REFRIGERATED AIR DRYER; KAESER- make refrigeration air dryer that is developed for reduced energy consumption & optimization of reliability and user friendliness. This Air Dryer is suitable for above air compressor at air inlet temperature of 50 deg C to the air dryer and ambient temperature to 45 deg. Flow Rate- 28 m³/min.</p>	<p>TF-280 1 No. 600 CFM</p>	<p>84211999</p>	<p>Rs. 11,62,000/=</p> <p>Rs. 794200/-</p>



Airmen Engineers & Services Private Limited

Plot No. A-14A, Bir Singh Colony, Near White Temple, Budh Vihar Phase - 2, Near Rohini Sector 24, Delhi-110042
CIN-U74999DL2017PTC317234

E Mail : sales@airmen.in, karan@airmen.in, (www.airmen.in)

Authorised Dealer for KAESER COMPRESSOR (INDIA) PVT LTD

3.	REFRIGERATED AIR DRYER; KAESER- make refrigeration air dryer that is developed for reduced energy consumption & optimization of reliability and user friendliness. This Air Dryer is suitable for above air compressor at air inlet temperature of 50 deg C to the air dryer and ambient temperature to 45 deg. Flow Rate- 34 m3/min.	TF-340 1 No. <i>1000 CFM</i>	84211999	Rs. 13,38,000/= <i>Rs. 9,40,850/-</i>
----	---	------------------------------------	----------	--

Buyer's scope of work

Unloading & shifting positioning, all interconnecting piping between the equipment (compressor, dryer, receiver tank) and its accessories, matching flanges, all electrical cabling, MCB/MCCB/SFU/Local Isolator Switch and its accessories, all ducting work, all condensate (moisture) piping and accessories, all civil work and hardware, any grouting work/fasteners require to install vertical air receiver tank for installation. As per KAESER recommendation electrical cable should be multi core flexible copper cable, Do not use Aluminum cable

COMMERCIAL TERMS AND CONDITIONS

- **PRICES** : The prices are in Rupees & are based on delivery from on Pune plant. → *Ex-works Price*
- **GST** : Extra as applicable → *18% Extra.*
- **P&F** : Extra @3% → *Included.*
- **FREIGHT** : At actual at your account. → *L*
- **TRANSIT INS.**: Transit insurance shall be in your scope. However, we can arrange the same at a rate of 0.23% of the basic order value. However, it will be your responsibility to complete the documents/formalities regarding claiming of insurance in case of transit damage. → *JAL Scope*
- **PURCHASE ORDER:** Please raise your purchase order on
Kaeser Compressors (India) Pvt. Ltd.,
 Plot No: 1& 2, Survey No: 297-298-299, Indo German
 Technology Park Village: Urawade, Taluka. - Mulshi, Dist: Pune,
 412 108 → *L*
- **PAYMENT TERMS:** 30 % advance along with order, Balance against Performa Invoice prior to dispatch.

Payments

→ 30% Advance along with ABC valid from 20 December 2022
 - 20 weeks from the date of Invoice
 60% with 100% GST against Performa form before dispatch.
 10% after commissioning subject to submit w/ immediate guarantee valid for one year



Airmen Engineers & Services Private Limited

Plot No. A-14A, Bir Singh Colony, Near White Temple, Budh Vihar Phase - 2, Near Rohini Sector 24, Delhi
CIN-U74999DL2017PTC317234

E Mail : sales@airmen.in, karan@airmen.in, (www.airmen.in)

Authorised Dealer for KAESER COMPRESSOR (INDIA) PVT LTD

- **DELIVERY** : Ex Stock subject to prior sale else within 16-20 Weeks from receipt of your technically and commercially Purchase Order with advance payment.
- VALIDITY** : This offer is valid for 30 days from the date of its issue & subject to confirmation thereafter.

GENERAL

- 1) **Warranty of the Equipment**: - The equipment is provided with warranty against faulty / defective material / workmanship / manufacturing defects only for 18 months from the date of dispatch or 12 months from the date of commissioning whichever is earlier. The normal consumable spares & rubber parts, effect of corrosion, erosion and normal wear & tear are specifically excluded from this warranty. The equipment should be maintained & used as per instructions given in the Instruction Book supplied along with the equipment & only genuine KAESER spares should be used. It shall be valid within India only.
- 2) **Erection & Commissioning**: - The air compressor does not need any grouting / foundation. Normal industrial floor that is able to hold the weight of the compressor package is sufficient. Commissioning of the compressor shall be done free of charge. For commissioning the Compressor, maximum 2 visits shall be made by our engineer.
- 3) **Force Majeure**: - This clause is applicable.

Yours faithfully,

For Airmen Engineers & Service Private Limited

Karan Chopra

+91-8588855726

*Discussed with
Mr. Karan Chopra
and agreed above rates.
(Signature)
29/12/23*

Comparison between KAESER & Competition				
Sr. No	Description	Units	KAESER	ES
Catalogue information				
1	Model offered		CSDX 140	EG 75
2	Control Version		Sigma Control 2	777
<p>Sigma Controller 2 1. RFID (Radio Frequency Identification) instead of conventional password protection, to prevent any unauthorised changes in the running parameters. 2. ADT, Pressure, Service duration counter and back counter, Duty Cycle (From Birth), Duty Cycle (resettable). 3. Interfaces: Ethernet; additional optional communication module for: Profibus DP, Modbus, Profinet and Deviconet. 4. AOA (or Air Demand Analysis) capabilities inbuilt, with graph for pressure, time and FAD in real time. 5. 1 year event log and fault history with 8 GB memory card. 6. Selection of Dual, Quadro, Vario, Dynamic and continuous control as standard.</p>				
3	Cooling Type		Air Cooled	Air Cooled
4	Max Working Pressure	In Bar(g)	8.5	7.5
KAESER can be operated from 5.5 bar-8.5 bar				
Technical Data and Comparison				
1	Main Motor Rating	In KW	75	75
2	Motor Make		Siemens Germany I04	777
KAESER uses Super Premium efficient Siemens Germany make IE4 motors				
3	FAD @ 7.0 Bar(g)	In CFM	486	522
As per ISO 12117 : 2009, Annexure C				
4	Total Input Power to package @ 7.0 Bar(g) including cooling fan power	In KW	81	91
As per ISO 12117 : 2009, Annexure C				
5	Specific Power @ 7.0 Bar(g)	KW/CFM	0.1667	0.1741
As per ISO 12117 : 2009, Annexure C/ KAESER has lowest specific power consumption.				
6	Total Input power for say requirement of 500 CFM on average basis	In KW	83.3	87.04
7	Net savings in Electrical power per hour with KAESER'S CSDX 140 Compressor	INR	BASE	1.7
8	Savings Electricity bill for 305 days and 24 hours of operation/year @ Rs 6/ kWh Power cost in 1 year	INR	BASE	₹ 2,03,752
This is the amount of Savings you get by using KAESER Compressor				
9	Savings Electricity bill for 305 days and 24 hours of operation/year @ Rs 5/ kWh Power cost in 3 years	INR	BASE	₹ 3,31,216
10	Normal Operating temperatures	degC	85-90	98-100
KAESER runs at lower running temperatures and hence lowest oil carry over and higher uptime even at peak Indian temperatures.				
11	Drive arrangement		1:1 Direct Drive	Gear Drive
There is no GEAR BOX in KAESER.				

POWER SAVINGS IN SECOTEC DRYER

Sr. No	Model		TT-280	7
1	Flow Rate	Qm	989	900
2	Technology Used		Thermal Mass Link	Hot Dry-Pass Valve
3	Electrical Power consumption at standard test condition, ISO 7183	KW	2.2	1.85
As per ISO 7183				
4	Electrical Power consumption for one year-SECOTEC TECHNIQUE	KW	0.97	2.85
5	Savings in Kw with Patent Thermal Mass Technology, KAESER'S SECOTEC Dryer consumes 50% of the Power in a Year	KW	BASE	1.88
6	EPBO running hours /year and Rs. 9 per unit (305x24x6 hrs)	Rs	BASE	₹ 1,48,219
This is the amount of Savings you get by using KAESER'S SECOTEC Dryer				
7	Savings by using Kaeser's Dryer in 3 years		BASE	₹ 4,94,633
8	TOTAL SAVINGS by using KAESER (Compressor+Dryer) in a Year	Rs	BASE	₹ 4,41,981
This is the amount of Savings you get by using KAESER Equipment				
9	TOTAL SAVINGS by using KAESER (Compressor+Dryer) in Three Years	Rs	BASE	₹ 13,25,944

Above data are correct to the best of our knowledge, but still you are requested to check with specified companies for deviations, if any.



M/s. Industrial ~~Equip~~ Equipment Company,
Bhivnadi.

Final Price

PRICE SCHEDULE

Product	Unit Price	Quantity	HSN Code	GST Rate
08080702 EG75-0 V, 400V/50HZ, 522 CFM ELGI Make VFD Air Compressor	₹ 28,40,000.00	1	84148090	18% ₹. 14,50,00
06680389 E75-0, 400V/50HZ, 82-522 CFM ELGI Make Fixed speed Air Compressor	₹ 21,62,400.00	1	84148090	18% ₹. 11,55,000
08460201 EG37-7.5 VFD 400V/50HZ, 55-255 CFM ELGI Make VFD Air Compressor	₹ 17,73,400.00	1	84148090	18% ₹. 9,80,000
08460202 EG37-7.5 400V/50HZ, 255 CFM ELGI Make Fixed speed Air Compressor	₹ 12,13,800.00	1	84148090	18% ₹. 6,90,000
ELRD 1100A ELGI Make Air Dryer	₹ 7,19,200.00	1	8421:00	18% ₹. 5,30,000
PF1177 ELGI Make Air Pre-Filter	₹ 112,100.00	1	73:11:00	18% ₹. 62,000
FF1177 ELGI Make Air Post-Filter	₹ 112,100.00	1	73:11:00	18% ₹. 62,000
CF1177 ELGI Make Air Post-Filter	₹ 112,100.00	1	73:11:00	18% ₹. 62,000
ELRD 600A AIR DRYERS ELGI Make Air Dryer	₹ 5,61,100.00	1	84:21:00	18% ₹. 3,10,000
PFE 0620 ELGI Make Pre Filter	₹ 97,600.00	1	73:11:00	18% ₹. 50,000
PFE 0620 ELGI Make Post Filter	₹ 97,600.00	1	73:11:00	18% ₹. 50,000
CFE 0620 ELGI Make Post Filter	₹ 97,600.00	1	73:11:00	18% ₹. 50,000
ELRD 500A ELGI Make Air Dryer	₹ 515,500.00	1	84:21:00	18% ₹. 2,91,600
PF520 ELGI Make Air Post-Filter	₹ 79,000.00	1	73:11:00	18% ₹. 41,700
FF520 ELGI Make Air Post-Filter	₹ 79,000.00	1	73:11:00	18% ₹. 41,700
CF520 ELGI Make Air Post-Filter	₹ 79,000.00	1	73:11:00	18% ₹. 41,700

Discount on the above price is 32%

AUTHORISED DEALER: INDUSTRIAL EQUIPMENT COMPANY

A - 139, Bhagat Singh Colony

T: 93140 82838 E: sales@iecblhadi.com W: www.industrialaircompressors.in

ELGI - W: www.elgi.com Toll Free: 1800 425 3544



TERMS & CONDITIONS

- 1. This sale will attract GST 18% ✓
- 2. Freight Condition shall be extra from COIMBATORE - FOR - JAZ Bhivnadi. Incl Insurance
- 3. Transit Insurance included: ✓
- 4. Statutory information: Please advise the GSTIN information in your purchase order.
- 5. Terms of payment: ~~30% advance and balance before delivery~~ 90% + 10% GST ~~25% against PO before~~ Dispatch, Invoice After Receipt within 7 days
- 6. Delivery: 4-5 weeks ~~from the date of PO.~~ 10% After Commissioning or within 15 days
- 7. Consignee: The consignment will be dispatched on "seives" basis with special instruction to the transporter to the consignment against the original copy of L/R. from supply subject to submission of PO valid for one year from commissioning
- 8. Supervision of erection and commissioning: We shall depute trained personnel for supervision of erection and commissioning under FOC. ✓
- 9. Validity: The offer is valid for a period of 30 days from the date of offer. Warranty: one year on complete package. Ex-cluded
- 10. Warranty: Warranty on: Air end, Motor, cooler, Oil separator tank
 - ① Special Warranty for All Equipment is 2 years from the date of commissioning or 30 months from the date of dispatch, whichever is earlier. as per
 - ② Warranty is limited to repair/replace of defective parts against manufacturing defects only and does not extend to any consequential liability thereof. attached sheet

Ref Invoice
RRD 0.5/1/2/3/4/5/6/7/8/9/10/11/12/13/14/15/16/17/18/19/20/21/22/23/24/25/26/27/28/29/30/31/32/33/34/35/36/37/38/39/40/41/42/43/44/45/46/47/48/49/50/51/52/53/54/55/56/57/58/59/60/61/62/63/64/65/66/67/68/69/70/71/72/73/74/75/76/77/78/79/80/81/82/83/84/85/86/87/88/89/90/91/92/93/94/95/96/97/98/99/100



Exclusions: Electricals (except motors and controller), rubber parts, seals, belts and consumables like air filter, oil filter, separator element, lubricant and similar wear and tear parts.

UPTIME Warranty clause as per the attached UPTIME Document.

11. Force majeure: We shall not be under any liability to the purchaser for any failure to perform any of the obligations under the contract where it is prevented by i) situations beyond its reasonable controls ii) acts or omissions of the purchaser. If the performance of the contract is prevented by this clause for more than 120 days, then either party (except where delay is caused by the purchaser, in the event only company) upon 30 days written notice may terminate the contract with respect to the unexecuted portion, where upon the purchaser shall promptly pay the company its termination charges determined in accordance of the company's standard accounting practices upon submission of invoices thereof.

We appreciate your interest in our product and are confident that we will be able to satisfy your requirement. As the next step, I request your time for a techno-commercial discussion on the offer as per your convenience.

Yours Sincerely,

For INDUSTRIAL EQUIPMENT COMPANY,

Govind Yadav | Sales Engineer

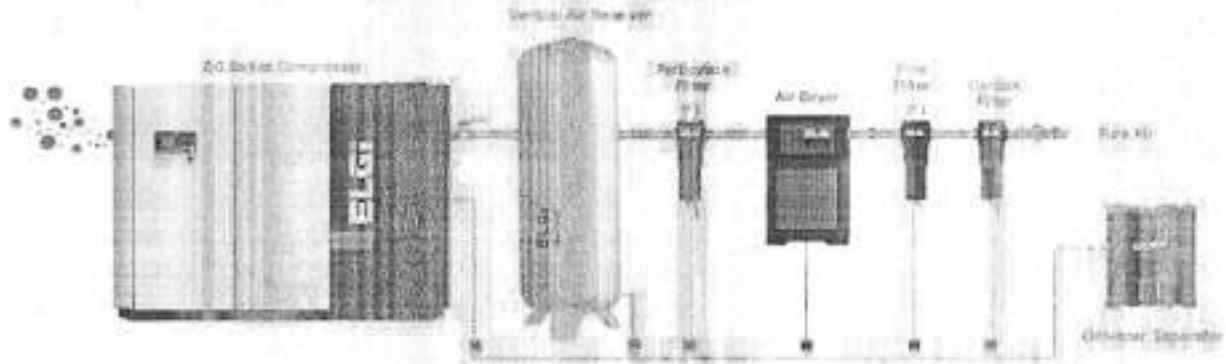
Mobile No: +91 9314304232 | Email: compressors@iecbhiwadi.com



RECOMMENDED LAYOUT

To achieve best performance levels, the following layout is recommended for

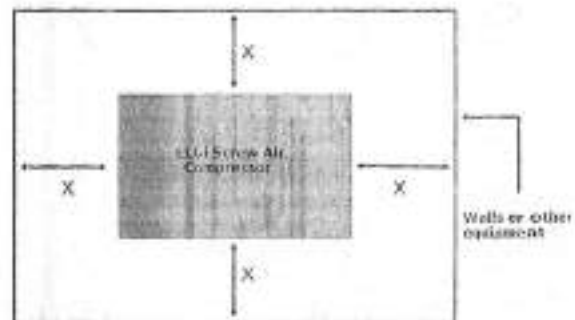
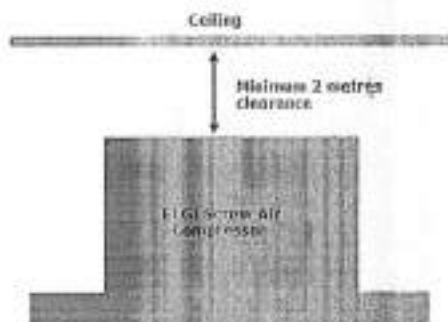
Oil-Lubricated Compressed Air Supply System



RECOMMENDED COMPRESSOR PLACEMENT – BASIC:

1. The entrance to the compressor room should be high enough and wide enough to get the compressor in and out.
2. Leave minimum 1 m space for compressors <75 kW and 1.5 m space for >75 kW, around the compressor for safe and proper inspection, cleaning and maintenance activities. (Fig. left below)
3. Leave minimum 2 m space above the compressor for the hot air to flow away from the compressor. (Fig. right above) (Air Cooled)
4. Maintain the room temperature with proper ventilation (The compressor room temperature should not be above 5°C from ambient temperature). Higher suction temperatures would result in reduced oil life due to higher discharge oil temperature (DOT).
5. Ensure the compressor is protected against direct sunlight and rains.
6. The compressor base should make 100% contact directly with the floor. Do not place the compressor on the wooden pallet supplied with the compressor.

NOTE: Installation & Commissioning will be done only after achieving above recommendations.



AUTHORISED DEALER: INDUSTRIAL EQUIPMENT COMPANY

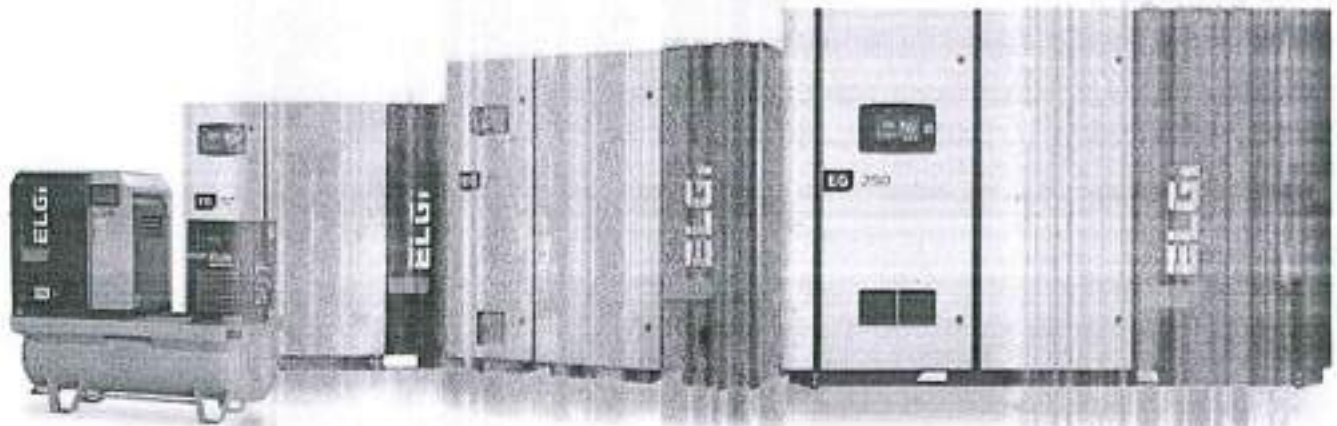
A - 139, Bhagat Singh Colony

T: 93140 82838 E: sales@iecwadi.com W: www.industrialaircompressors.in

ELGI - W: www.elgi.com Toll Free: 1800 425 3544



ELGI ELECTRIC POWERED - SCREW AIR COMPRESSOR



EG 75-8 400V / 50Hz	
Description	Specifications
Model	EG 75-8 → Diesel Driven
Capacity*	522 cfm ✓
Maximum pressure	8 bar.g
Normal working pressure	7 bar.g
Main motor nominal rating	75 kW
Starter	Star-Delta Starter
Dimensions	2063mm*1269mm*1969mm
Weight of the package	2020 kg

*For compressors At normal working pressure, All the data above are as per ISO 1217, Annex C

SCOPE OF SUPPLY:

Base & Enclosure:

- Rigid frame
- Powder-coated panels with two service doors at the front and two at the sides
- Latches on each door
- Ducts for drive motor

Drive System:

- Main motor – high Efficiency IE3 TEFC motor with "Class-F" insulation
- Flexible coupling with elastic element
- Rigid connection of motor and the air-end flange
- CE certified control panel with
- Wye-delta reduced voltage starter for the main motor
- DOL starter with contactor for cooling motors
- High amp protection electric motors

AUTHORISED DEALER: INDUSTRIAL EQUIPMENT COMPANY

A - 139, Bhagat Singh Colony
T: 93140 82838 E: sales@iechivadi.com W: www.industrialaircompressors.in
ELGI - W: www.elgi.com Toll Free: 1800 425 3544



- o **Quality assurance and reliability that come from being an ISO 9001:2015 company.**
 - Each component in ELGI products pass through stringent quality tests and are 100% tested for performance in the manufacturing line
 - Each product comes with ELGI's UPTIME Assurance.
- o **Dedicated toll-free Customer Care System**
 - After sales service through our service organization that consists of 13 branches, over 70 dealers across India, over 200 distributors in 100+ countries across the globe.

Please find enclosed with this offer:

- o Technical specifications and Scope of supply
- o Commercial Terms & Conditions
- o Installation Guidelines
- o UPTIME Warranty

We hope our offer is in line with your requirement and in case you need any other clarifications, please feel free to contact the undersigned.

We look forward to receiving your valuable order.

Thanking and assuring you of our utmost attention always,

Yours Sincerely,

For INDUSTRIAL EQUIPMENT COMPANY,

Govind Yadav | Sales Engineer

Mobile No: +91 9314304232 | Email: compressors@iecbhiwadi.com



Air Inlet System:

- Pre-filter: To ensure clean air is supplied to the inlet system
- Air duct: To get clean and cool air to the air filter
- Air filter housing
- Twin paper element, each of 3 microns with an efficiency of 99%
- For pre-cleaning on the air cleaner to separate heavy particles and avoid clogging of paper element
- Service indicator – indicating filter service need
- Rubber coupling connecting air filter to the intake valve
- Normally closed type intake valve with integrated blow down and solenoid control valve
- Load/unload type capacity control for EG 11 to EG 45
- Intake valve modulation with 100 to 60% capacity control and load/unload below 60% for EG 55 & EG 75

Compression System:

- Highly efficient axis air end with n-v profile rotors

Air/Oil Separation System:

- Receiver tank incorporating OSBIC principle mounted on the base frame
- Oil filling port
- Oil drain with valve
- Pressure relief valve
- Oil sight glass
- Spin-on air-oil separator element (EG11-EG22) / Cartridge type air-oil-separator element (EG30 – EG75)
- Minimum pressure valve

Discharge System:

- Moisture separator with zero loss drain valve

Cooling System:

- Thermal zones for hot and cool air for maximized cooling
- High ambient oil cooler for low operating temperature
- High efficiency after-cooler for low approach temperature
- Cooler mounted insulated compartment for easy cleaning
- Cooling fan with integrated motor

Lubrication System:

- High capacity spin-on oil-filter element with 10-micron rating
- Return oil line from separator tank to air-end.
- Rigid pipe connections for long life and leak-free operation

Controls System:

- Neuron III controller
- Pressure transducer
- Temperature sensor

Safety Features:

- CE certified package

Optional Features:

AUTHORISED DEALER: INDUSTRIAL EQUIPMENT COMPANY

A - 139, Bhagat Singh Colony

T: 93140 82838 E: sales@iecchivadi.com W: www.industrialaircompressors.in

ELGi - W: www.elgi.com Toll Free: 1800 425 3544



- Integrated dryer and VFD

** Due to continuous engineering improvements, features are subject to change without prior notice. Product image shown are representative and may not match exactly with the actual product.

EG 75-8 V 400V/50HZ	
Description	Specifications
Model	EG 75-8 V — VFD
Capacity*	80 ~ 522 cfm
Maximum pressure	8.0 bar.g
Normal working pressure	7.0 bar.g
Main motor nominal rating	75 kW SF 1.15 400V (+/-10%), 50Hz (+/-5%), 3 Phase
Starter	Variable Frequency Drive
Dimensions	2063x1269x1969 mm
Weight of the package	2090 kgs

EG 37-7.5 V 400V/50HZ	
Description	Specifications
Model	EG 37-7.5 CV
Capacity*	55-255 cfm
Maximum pressure	7.5 cfm
Normal working pressure	7.0 cfm
Main motor nominal rating	37 kw
Starter	VFD
Dimensions	1705mm*1111mm*1570mm
Weight of the package	1155 kgs

EG 37-7.5 400V/50HZ	
Description	Specifications
Model	EG 37-7.5 — NON VFD
Capacity*	255 cfm
Maximum pressure	7.5 cfm
Normal working pressure	7.0 cfm

AUTHORISED DEALER: INDUSTRIAL EQUIPMENT COMPANY

A - 139, Bhagat Singh Colony
T: 93140 82838 E: sales@iecbhiwadi.com W: www.Industrialaircompressors.in
ELGI - W: www.elgi.com Toll Free: 1800 425 3544



Main motor nominal rating	37 kw
Starter	Star Delta Starter
Dimensions	1705mm*1111mm*1570mm
Weight of the package	1110 kgs

*For compressors At normal working pressure, All the data above are as per ISO 1217, Annex C

SCOPE OF SUPPLY:

Base & Enclosure:

- Rigid frame
- Powder-coated panels with two service doors at the front and two at the sides
- Latches on each door
- Ducts for drive motor

Drive System:

- Main motor – high Efficiency IE3 TEFC motor with "Class-F" insulation
- Flexible coupling with elastic element
- Rigid connection of motor and the air-end flange
- CE certified control panel with
- Wye-delta reduced voltage starter for the main motor
- DOL starter with contactor for cooling motors
- High amp protection electric motors

Air Inlet System:

- Pre-filter: To ensure clean air is supplied to the inlet system
- Air duct: To get clean and cool air to the air filter
- Air filter housing
- Twin paper element, each of 3 microns with an efficiency of 99%
- For pre-cleaning on the air cleaner to separate heavy particles and avoid clogging of paper element
- Service indicator – indicating filter service need
- Rubber coupling connecting air filter to the intake valve

AUTHORISED DEALER: INDUSTRIAL EQUIPMENT COMPANY

A - 139, Bhagat Singh Colony
T: 93140 62838 E: sales@iecbhivadi.com W: www.industrialaircompressors.in
ELGI - W: www.elgi.com Toll Free: 1800 425 3544



- Normally closed type intake valve with integrated blow down and solenoid control valve
- Load/unload type capacity control for EG 11 to EG 45
- Intake valve modulation with 100 to 60% capacity control and load/unload below 60% for EG 55 & EG 75

Compression System:

- Highly efficient axis air end with n-v profile rotors

Air/Oil Separation System:

- Receiver tank incorporating OSBIC principle mounted on the base frame
- Oil filling port
- Oil drain with valve
- Pressure relief valve
- Oil sight glass
- Spin-on air-oil separator element (EG11-EG22) / Cartridge type air-oil-separator element (EG30 - EG75)
- Minimum pressure valve

Discharge System:

- Moisture separator with zero loss drain valve

Cooling System:

- Thermal zones for hot and cool air for maximized cooling
- High ambient oil cooler for low operating temperature
- High efficiency after-cooler for low approach temperature
- Cooler mounted insulated compartment for easy cleaning
- Cooling fan with integrated motor

Lubrication System:

- High capacity spin-on oil-filter element with 10-micron rating
- Return oil line from separator tank to air-end.
- Rigid pipe connections for long life and leak-free operation

Controls System:

- Neuron III controller
- Pressure transducer
- Temperature sensor

Safety Features:

- CE certified package

Optional Features:

- Integrated dryer and VFD

** Due to continuous engineering improvements, features are subject to change without prior notice. Product image shown are representative and may not match exactly with the actual product.

AUTHORISED DEALER: INDUSTRIAL EQUIPMENT COMPANY

A - 139, Bhagat Singh Colony

T: 93140 82838 E: sales@iecshwadi.com W: www.industrialaircompressors.in

ELGi - W: www.elgi.com Toll Free: 1800 425 3544



ELRD 600A AIR DRYERS

Description	Specifications
Model	<u>ELRD 600 AC</u>
Capacity*	<u>600 cfm @ 7 bar</u>
Maximum pressure	16 bar.g
Normal working pressure	7 bar.g
Main motor nominal rating	3.13 kW
Starter	NA
Dimensions	800mm*1000mm*1350mm
Weight of the package	275 kg

PFE 0620

Description	Specifications
Model	PFE0620
Capacity*	620 cfm@ 7 bar
Maximum pressure	NA
Normal working pressure	7 bar.g
Main motor nominal rating	NA
Starter	NA
Dimensions	705mm*160mm
Weight of the package	9.5 kg

Poe filter

FFE 0620

Description	Specifications
Model	FFE0620
Capacity*	620 cfm@ 7 bar
Maximum pressure	NA
Normal working pressure	7 bar.g
Main motor nominal rating	NA
Starter	NA
Dimensions	705mm*160mm
Weight of the package	9.5 kg

fine Filter

AUTHORISED DEALER: INDUSTRIAL EQUIPMENT COMPANY

A - 139, Bhagat Singh Colony
 T: 93140 82838 E: sales@iecbhiwadi.com W: www.IndustrialEquipment.com
 ELGI - W: www.elgi.com Toll Free: 1800 425 3544



CFE 0620	
Description	Specifications
Model	CFE0620
Capacity*	620 cfm @ 7 bar
Maximum pressure	NA
Normal working pressure	7 bar.g
Main motor nominal rating	NA
Starter	NA
Dimensions	705mm*160mm
Weight of the package	9.5 kg

Carbon Filter

ELRD 1100A AIR DRYERS	
Description	Specifications
Model	ELRD 1100 AC
Capacity*	1100 cfm @ 7 bar
Maximum pressure	16 bar.g
Normal working pressure	7 bar.g
Dimensions	900mm*1200mm*1725mm
Weight of the package	425 kg

*For compressors At normal working pressure, All the data above are as per ISO 1217, Annex C

ELRD 500A AIR DRYERS	
Description	Specifications
Model	ELRD 500 AC
Capacity*	500 cfm @ 7 bar
Maximum pressure	16 bar.g
Normal working pressure	7 bar.g
Dimensions	800mm*1000mm*1350mm
Weight of the package	250 kg

AUTHORISED DEALER: INDUSTRIAL EQUIPMENT COMPANY

A - 139, Bhagat Singh Colony
 T: 93140 82838 E: sales@iecbhwedi.com W: www.Industrialaircompressors.in
 ELGI - W: www.elgi.com Toll Free: 1800 425 3544



AF 0520P-1 1/2" BSP	
Description	Specifications
Model	AF 0520 P
Capacity*	520 cfm
Maximum pressure	20 bar
Normal working pressure	7 bar
Main motor nominal rating	NA
Starter	NA
Dimensions	851mm*151mm
Weight of the package	8.0 kgs

* For compressors At normal working pressure, All the data above are as per ISO 1217, Annex C

AUTHORISED DEALER: INDUSTRIAL EQUIPMENT COMPANY

A - 139, Bhagat Singh Colony
T: 93140 82838 E: sales@ecohivadi.com W: www.industrialaircompressors.in
ELGI - W: www.elgi.com Toll Free: 1800 425 3544



AF 0520F-1 1/2" BSP	
Description	Specifications
Model	AF 0520 F
Capacity*	520 cfm
Maximum pressure	20 bar
Normal working pressure	7 bar
Main motor nominal rating	NA
Starter	NA
Dimensions	851mm*151mm
Weight of the package	8.0 kgs

*For compressors At normal working pressure, All the data above are as per ISO 1217, Annex C

AF 0520C-1 1/2" BSP	
Description	Specifications
Model	AF 0520 C
Capacity*	520 cfm
Maximum pressure	20 bar
Normal working pressure	7 bar
Main motor nominal rating	NA
Starter	NA
Dimensions	851mm*151mm
Weight of the package	8.0 kgs

AUTHORISED DEALER: INDUSTRIAL EQUIPMENT COMPANY

A - 139, Bhagat Singh Colony
T: 93140 82838 E: sales@iecblwadi.com W: www.Industrialaircompressors.in
ELGI - W: www.elgi.com Toll Free: 1800 425 3544



AF 01177P-1 1/2" BSP	
Description	Specifications
Model	AF 01177 P
Capacity*	1177 cfm
Maximum pressure	20 bar
Normal working pressure	7 bar
Main motor nominal rating	NA
Starter	NA
Dimensions	862mm*240mm
Weight of the package	18.5 kgs

AF 01177F-1 1/2" BSP	
Description	Specifications
Model	AF 01177 F
Capacity*	1177 cfm
Maximum pressure	20 bar
Normal working pressure	7 bar
Main motor nominal rating	NA
Starter	NA
Dimensions	862mm*240mm
Weight of the package	18.5 kgs

AF 01177C-1 1/2" BSP	
Description	Specifications
Model	AF 01177
Capacity*	1177 cfm
Maximum pressure	20 bar
Normal working pressure	7 bar
Main motor nominal rating	NA
Starter	NA
Dimensions	862mm*240mm
Weight of the package	18.5 kgs

AUTHORISED DEALER: INDUSTRIAL EQUIPMENT COMPANY

A - 139, Bhagat Singh Colony
T: 93140 82838 E: sales@iecbhiwadi.com W: www.industrial@compressors.in
ELGi - W: www.elgi.com Toll Free: 1800 425 3544



Vertical Air Receiver 5000 ltrs-10 (4" inlet/outlet) MINI MAKE	
Description	Specifications
Model	VAR 5000-10
Capacity*	5000 ltrs
Hydro test Pressure	16 bar
Shell Thickness	10 mm
Dish Thickness	12 mm
Accessories	ADV, Pressure Guage, Safety Valve
Dimensions	Height 3550mm*Dia 1500mm
Weight of the package	1735 kgs

*For compressors At normal working pressure, All the data above are as per ISO 1217, Annex C

AUTHORISED DEALER: INDUSTRIAL EQUIPMENT COMPANY

A - 139, Bhagat Singh Colony
T: 93140 82838 E: sales@iecchiwadi.com W: www.industrialaircompressors.in
ELGI - W: www.elgi.com Toll Free: 1800 425 3544



ELGI's UPTIME Assurance is all about giving customers peace of mind by offering industry's leading warranty

ELGI warrants that its product and the components for its products will perform the purpose and function for which they are designed and intended for the periods of time indicated below when used, serviced and maintained in accordance with ELGI's instructions and specification.

To avail this warranty please register with the ELGI Customer Care System (CCS) within 15 days after receipt of the compressor package or within 3 days of commissioning whichever occurs earlier.

[EG SERIES

AIREND

72 months from the date of start-up (not exceeding 30000 Hours) or 78 months from the date of shipment from ELGI factory/warehouse, whichever occurs first

MAIN MOTOR/COOLER/ SEPARATOR TANK

36 months from the date of start-up or 42 months from the date of shipment from ELGI factory/warehouse, whichever occurs first

[ENCAP SERIES

AIREND

36 months from the date of start-up (not to exceed 15000 hrs) or 42 months from the date of shipment from ELGI factory/warehouse, whichever occurs first

[OF SERIES

AIREND

48 months from the date of commissioning (not exceeding 30000 hours) or 54 months from the date of shipment from the ELGI factory/warehouse, whichever occurs first

MOTORS (MAIN & OIL) /COOLERS/CAPACITY CONTROL VALVE

24 months from the date of commissioning or 30 months from the date of shipment from the ELGI factory/warehouse, whichever occurs first

OTHER COMPRESSOR PARTS

All other parts, unless explicitly mentioned other than the above, are warranted for a period of 12 months from the date of start up or 18 months from the date of shipment from ELGI factory/warehouse, whichever occurs first.

WARRANTY COVERAGE

1st year Parts, labour and transportation of parts
2nd year onwards Parts (on works basis) and labour

If an ELGI product or component of an ELGI product fails to perform as warranted, ELGI will, at its option, repair or replace the product or component of the product as indicated, and upon the terms and provisions set forth below.

WARRANTY CONDITIONS

- Compressors shall be installed, operated and maintained as per the O&M Operation & Maintenance Manual.
- Commissioning shall be done by ELGI authorised personnel/distributor.
- Genuine consumables, lubricants and spares shall be used.
- Compressor shall be preserved if kept idle as per preservation procedure detailed in the ELGI Operation & Maintenance Manual.
- ELGI's free oil sampling program participation is required as below:
 - If ELGI AirLube UT Syn Fluid is used - Every 4000hrs/6 months whichever occurs first or as per the oil sampling report.
 - If ELGI AirLube XD is used - As recommended by ELGI authorised service personnel
- All warranty complaints must be registered with ELGI CCS within 7 days.
- Customer shall maintain Water sampling quality as per ELGI's recommendations, given in O&M with a frequency of every 6 months (OF SERIES)
- Customer agrees to periodic and sporadic inspection giving one week's prior notice to conduct periodic compressor and its maintenance routine audits (OF SERIES)
- The customer shall maintain the below documents and produce if requested prior to any warranty claim.
 - Copy of signed warranty document.
 - Proof of purchase of consumables, lubricant and spares
 - Maintenance log
- In case the customer wants to take services of ELGI or its dealer's personnel for carrying out regular maintenance work, the applicable service charges are to be paid by the customer.
- Warranty on factory repaired/replaced parts shall expire along with the warranty.
- The benefits of this warranty shall be to the first owner or commercial user only and cannot be transferred.

EXCLUSIONS

- Electricals (except motors and controller), rubber parts, seals, and consumables like air filter, oil filter, separator element, lubricant and similar wear and tear parts.
- Air travel, boarding and lodging expense of service personnel to attend any kind of service or maintenance.

CONDITIONS THAT WILL VOID & INVALIDATE WARRANTY

- Failure to abide by the warranty conditions, unless otherwise given in writing by ELGI, will make the warranty void.
- Repairs carried out on the package without the prior authorisation by ELGI.
- Usage of non-genuine spare parts.
- Nonconformity to ELGI's operating instructions, specifications, guidelines, maintenance and service instructions.
- Equipment conditions as a result of normal wear and tear, abnormal and unusually harsh operating conditions, willful misuse and negligent use of equipment, accidents and shipping damage.
- Customisation of ELGI supplied compressor package without written consent from ELGI.
- Re-installation of compressors from one location to another unless otherwise recertified by ELGI authorised personnel.
- If compressor is not commissioned within 6 months of receipt unless otherwise recertified by ELGI authorised personnel.
- If there are any dues in payment towards purchase of equipment, service and spares beyond the agreed payment schedule.

LIMITATION OF LIABILITY:

- ELGI shall not be liable for any loss of profit, loss of production, loss of income or contract, loss of goodwill, or for indirect or consequential or incidental loss or damage of any kind whatsoever.
- In no event shall ELGI be liable for any claims or loss having a value higher than the original purchase price of the product.
- ELGI reserves the right to alter or terminate the warranty programme for any part or units not already covered under this policy.

FORCE MAJEURE:

ELGI is not liable for failure to perform the company's obligations if such failure is as a result of acts of God (including but not limited to fire, flood, earthquake, storm, hurricane or other natural disaster), war, invasion, act of foreign enemies, hostilities (regardless of whether war is declared), civil war, rebellion, revolution, insurrection, military or usurped power or confiscation, terrorist activities, nationalisation, government sanction, blockage, embargo, labour dispute, strike, lockout or interruption or failure of electricity or telephone service.

USER INFORMATION

Company Name :
Address :
Contact Person :
Contact Details :

Compressor Details (To be entered by ELGI authorised personnel)

Compressor Fab No :
Airand Serial No :
Start-up Date :
Commissioned by :
Place & Date :

I have read and accepted all the Terms and Conditions of this agreement completely.

Customer Seal & Signature :

ELGI Authorised Signatory :

DISCLAIMER:

The warranty expressly set forth herein is the only warranty provided by ELGI with respect to its products and ELGI expressly denies and disclaims all other warranties, either express or implied and specifically disclaims any implied warranty of merchantability or fitness for a particular purpose.

AUTHORISED DEALER: INDUSTRIAL EQUIPMENT COMPANY

A - 139, Bhagat Singh Colony

T: 93140 82638 E: sales@iecbhiwadi.com W: www.industrialaircompressors.in

ELGI - W: www.elgi.com Toll Free: 1800 425 3544

Comparison Sheet

RS

S.No	Description	ELGI	Competition	Savings with ELGI
1	Model	EG 75	75 KW	
2	Working Pressure	7 Bar	7 Bar	
3	FAD in CFM	522	494	FAD is more in ELGI
4	SFC (Specific Power Consumption)-KW/CFM	0.1732	0.1947	Power is Better with ELGI
5	Approx. Power Cost for generating 1 CFM considering 80100 running hrs & Rs.8/- Per Unit cost	Rs.11,084.00	Rs.12,460.00	Low Power Cost with ELGI
6	Approx. Power Cost for generating 500 CFM	5542400	6230400	Low Power Cost with ELGI
7	Approx. Saving with ELGI in 1 Year			688000
8	Approx. Saving with ELGI in 5 Years			3440000
	Make	ELGI	XYZ	Benefit with ELGI Compressor
	Warranty on Package	1yr	1yr	Standard Warranty
	Warranty on Aired	5yr	3yr	More Reliability
	Warranty on Motor	3yr	1yr	More Reliability
	Warranty on Cooler	3yr	1yr	More Reliability
	Warranty on Oil Separation Tank	3yr	1yr	More Reliability
	Description	ELGI	XYZ	Remarks

Handwritten notes in blue ink: "Fast 10 3yr" and "15000 3yr" with arrows pointing to the warranty columns.

	Oil Carry Over	Less Than 1 PPM	less than 2 PPM	<p>More oil carry over results in reducing the life of Down Stream filters & pressure drop will occur frequently in filters due to clogging resulting in Pressure drop due to which the compressor will consume more power & filters need to be replaced more frequently.</p>
	Warranty on Compressor	One Year	One year or 4000 Hrs whichever is earlier	Customer satisfaction
	Warranty on Air-End	6 years or 30000 Hrs whichever is earlier	One year or 4000 Hrs whichever is earlier	We have confidence in our machine that we can offer an Extended warranty of 6 year on Air-End
	Warranty on Motor	3 Years	One year or 4000 Hrs whichever is earlier	We have confidence in our machine that we can offer an Extended warranty of 3 year on Motor
	Warranty on Cooler	3 Years	One year or 4000 Hrs whichever is earlier	We have confidence in our machine that we can offer an Extended warranty of 3 year on Cooler
	Warranty on Separator Tank	3 Years	One year or 4000 Hrs whichever is earlier	We have confidence in our machine that we can offer an Extended warranty of 3 year on Separator tank

COMMERCIAL SCHEDULE

U/S Bases
Insha 2015
started

Final Rates
with 5 years
warranty

Qty.	Description	Unit Price	Discounted Price
1	Gardner Denver Air Compressor Model "L75+A7.5" (75 K.W) (100HP) CFM 520 Oil Lubricated, Air Cooled Rotary Screw Compressor with standard scope of supply as described in the subject offer With IConn Kit	23,63,000	14,17,800
1	Gardner Denver Variable Frequency Drive (VFD) Air Compressor Model "L75+A7.5 RS" IE 3 Main Motor (75 K.W) (100HP) CFM 238-520 Oil Lubricated, Air Cooled Rotary Screw Compressor with standard scope of supply as described in the subject offer With IConn Kit	31,23,000	18,73,800
1	Gardner Denver Variable Frequency Drive (VFD) Air Compressor Model "LI37-A10 RS" IE 3 Main Motor (37 K.W) (50HP) CFM 52-242 Oil Lubricated, Air Cooled Rotary Screw Compressor with standard scope of supply as described in the subject offer.	16,57,000	9,94,200
1	Refrigerant Air Dryer of 1112 CFM With Max Working Pressure of 12 bar "CD315F-A"	10,97,700	6,58,620
1	Refrigerant Air Dryer of 765 CFM With Max Working Pressure of 12 bar "CD216F-A"	7,56,400	4,53,840
1	Refrigerant Air Dryer of 559 CFM With Max Working Pressure of 12 bar "CD160F-A"	6,70,900	4,02,540
3	General Purpose CF0305L3"B High Efficiency Filter"CF0305L3"C & Dry Particulate Filter CF0305L3"E CFM 1077 Each Filter	3,82,800	2,29,680
3	General Purpose CF082L1 1/2"B High Efficiency Filter"CF082L1 1/2"C & Dry Particulate Filter CF082L1 1/2"E CFM 290 Each Filter	1,73,100	1,03,860
2	(Optional) Extended 5 Years warranty (Protect-5) for Model L75+A-7.5	54,000	54,000
1	(Optional) Extended 5 Years warranty (Protect-5) Model LI37-A10 RS	21,000	21,000

01680389
VFD
VFD
VFD
DR460120

Rs. 13,23,280 Each
Rs. 17,48,220 Each
Rs. 9,27,920 Each

Final Rate

Rs. 96,936/Each
8000 Running hours

NO Extra charges for labor in price

The GD Protect 5 Extended Warranty (5 years or 40,000 Hrs) will cover the following

Parts:

- Air End
- Motors
- Separator Vessels
- Air and Oil Coolers
- Variable Speed Drives
- Ventilation Fan Assembly
- Controllers

→ Oil Change - 8000 Run/Hour
cost: 1600/- Per change
→ Oil Separator - 4000 Run/Hour
cost:

Adsar Hydro Controls



ADSAR/22-23/246

Date-05.12.2022

M/S.-Jindal Aluminium Limited
SP-2/333, Riico Industrail Area
Bhiwadi-301019

Kind Attn: Mr. Rajgopal Ji Sardar (96111-95368)

Subject- **Gardner Denver Oil Injected Screw Air Compressor**

Your requirement: -Oil Injected Screw Air Compressor of 75 KW.

Dear Sir,

We thankfully acknowledge receipt of your inquiry on the subject. We are pleased to hereby submit our offer for **Air Cooled Oil Injected Rotary Screw Air Compressor Model-L75+A7.5, & Oil Injected Rotary Screw Air Compressor Model-L75+A7.5 RS, & Model-Li37-A10 RS** as detailed in the subject proposal.

M/s **Gardner Denver** is a leading global manufacturer of highly engineered products for various industrial, medical, environmental, energy, transportation and process applications and has rich history of serving Industrial demand globally.

- Established in 1859 (**More Than 150 Years in service of Customers**)
- Headquartered in **Milwaukee, WI, USA.**
- Worldwide sales and service through a network of distributors, representatives and direct sales channels
- **40 Manufacturing facilities** in the Americas, Europe, the Middle East, Asia Pacific & India

The Industrial Products Group of Gardner Denver includes well-known brands as listed below:

- **Gardner Denver & Comp Air** Compressors (USA, UK, Germany, China, India)
- **Elmo Rietschle** Vacuum pumps and low pressure compressors. (Germany, China)
- **Robuschi** Tri Lobe Blowers , Vacuum Pumps & Low Pressure Screw Compressors(Italy, India)

We trust you will find above in line with your requirements. Should you have any queries, please do not hesitate to contact the undersigned.

Best Regards,

Vijendra Singh Shekhawat
Adsar Hydro Controlo

Adsar Hydro Controls



TERMS & CONDITIONS

Prices	Price mentioned above are on <u>FOR</u> Basis for supply of mentioned equipment. Price quoted does not include any Taxes or Duties, which shall be extra to purchasers account as applicable at the time of shipment. <u>FOR - JAL BND.</u>
Delivery	Within 14-16 <u>14</u> Weeks from the date of receipt of your technically and commercially clear Order with advance.
Duties	GST Extra @ 18% <u>✓</u>
Freight & Transit Insurance	<u>Inclusive.</u> <u>✓</u>
Payment Terms	100% Payment within 7 days of receipt of material at your site <u>→</u>
Validity	Prices are valid for <u>30</u> days and thereafter subject to our confirmation <u>→</u>
Warranty	60 months from date of commissioning OR 63 months from date of Invoice, whichever is the earliest. <u>✓</u>

Vijendra Singh Shekhawat
Manager- Sales & Marketing
Adsar Hydro Controls
F-773 A, Road No. 6D
VKIA, Jaipur
Cell-80033-97773

*Discussed with
Mr. Shekhawat and
agreed above.*

[Signature]
06/12/22

TERMS & CONDITIONS

→ Prices	Price mentioned above are on <u>EX-Works, Ahmedabad</u> Basis for supply of mentioned equipment. Price quoted does not include any Taxes or Duties, which shall be extra to purchasers account as applicable at the time of shipment. ✓ → <u>FOR-IAL BWD. on Freight Paid B@</u> ✓
→ Delivery	Within 14-16 Weeks from the date of receipt of your technically and commercially clear Order with advance. ✓
→ Duties	GST Extra @ 18% ✓
→ Freight & Transit Insurance	Extra As Actual. <u>Included in above Price.</u>
→ Payment Terms	<u>30% advance along with PO & balance 70% against PI before dispatch</u>
→ Validity	Prices are valid for 30 days and thereafter subject to our confirmation
→ Warranty	<u>60 months</u> from date of commissioning OR <u>63 months</u> from date of Invoice, whichever is the earliest. ✓

Vijendra Singh Shekhawat
Manager- Sales & Marketing
Adsar Hydro Controls
F-773 A, Road No. 6D
VKIA, Jaipur
Cell-80033-97773



	Kaeser	Others
Motors	<ol style="list-style-type: none"> 1. Standardize Siemens glow motors. 2. IEC Super Premium Efficiency. 3. PT 100 Sensors on each of the three motor windings, for controller to continuously monitor motor's winding temperature. 4. Higher TEC light motor. 	<ol style="list-style-type: none"> 1. Variable speed/variable motors. 2. IEC/IEP1 Motors. 3. No active sensors installed.
Almond	<ol style="list-style-type: none"> 1. Larger sized, with umbrellas in the hatches, and slow speed screw results in increased working hours for the critical components. 2. Mechanical also requires seal hence no maintenance required. 3. Most efficient in the industry. 	<p>1. Smaller sized with ground driven high speed screws causing high vibration and hence decreased life of components.</p> <p>2. Traditional rotary shell seals which have high degree of wear and has a life of 25000 to 25000 hrs only.</p>
Drive	<ol style="list-style-type: none"> 1. Direct Drive, Motor PPM - Screw PPM (in 9% maintenance issues) 2. Long life, quick and easy to replace coupling. 	<ol style="list-style-type: none"> 1. Gear Drive, Screw PPM + Motor PPM <p>Transition issues and reduced life of components.</p> <ol style="list-style-type: none"> 1. Involves whole day job to replace coupling, leading high downtime
Cooling	<ol style="list-style-type: none"> 1. 16 to 20 N large sized conders than any competitor, and hence uninterrupted working of machines even in extreme ambient conditions and low running temperatures. 2. Cycles are flood, wet/dry and outside the compressor, leading 2.0HR to clean. 	<ol style="list-style-type: none"> 1. Small sized conders, and hence generally unable to perform under extreme ambient conditions. 2. Cools are placed horizontally and enter the compressor, making it difficult to do regular maintenance 3. Flood level Oil cooler motor hence results wastage of excess oil/fuel.
Service	<ol style="list-style-type: none"> 1. Complete data reviewed easily through OMS (Quick Response Checklist), making it easy quick and trouble free operation. 2. Cost of Kaeser's Synthetic oil is Rs. 825 /lit. for 8000 hrs. 3. Double AMM Filling, Freely complete compressor on AMM pads eliminating any requirement of oil work, thereby reducing labor charges such as Motor and Almond on AMM Pads. 	<ol style="list-style-type: none"> 1. (Synthetic) oil is covered beneath all oil drain points, and hence trouble issues and time consuming process. 2. Cost of Synthetic oil is about 1800 /lit.
Oil Filling & Oil Circulation	<p>All oil piping made in SS, hence no maintenance cost. CTM1 (Electro Thermal Management) for Oil circulation is used which is linked with the Sigma Controller 2.</p> <p>Sigma Controller 2</p> <ol style="list-style-type: none"> 1. RTD (Radio Frequency Identification) based of compressor protection, to prevent any unauthorised changes in the running parameters. 2. AOT (Pressure, Service duration counter and back counter, Duty Cycle (from start, Duty Cycle (overhaul), (overhaul). 3. Interlocks (Electrical, additional optional communication modules for Profibus DP, Modbus, RS485 and DeviceNet). 4. AMM for Air Demand Analysis) capability (Visual, with graph for pressure, time and PAD in real time. 5. 1 year warranty and track history with 8 08 memory card. 6. Selection of Dual, Quad, Vario, Dynamic and Performance control as standard. 	<p>Generally made of rubber hoses, and need to be replaced 8000 to 12000 hrs. No CTM is there, they have Manual Thermostatic valve.</p> <ol style="list-style-type: none"> 1. Disposed protection only prone to unauthorised access and changes 2. Limited data log capability for a day or 2. 3. No AMM capabilities. 4. Electrical connectivity not available, or available at an extra cost.
Condensate Drain	<ol style="list-style-type: none"> 1. Inbuilt centrifugal separator with anti siphon at the outlet of an exducer. 2. Zero Air loss and zero pressure loss for 24hrs (variable electronic drain valve, 1 for compressor and other for Dwyer) 	<ol style="list-style-type: none"> 1. In built centrifugal separator but without anti flow siphon. 2. Generally sewer based air loss and pressure loss drains are installed.
Wiring and Conventions	<p>All the wiring and conventions is done by IEC/NEMA code.</p>	<p>Generally all the wiring and conventions are done by their channel partners.</p>

iConn-Welcome to Industrial Revolution 4.0

- Industrial Modern with high speed cloud server connectivity.
- Shows important compressor details like pressure, temperature, Running Hours, service hours, Live and historical alarm/trips.
- GPS Based systems.
- Optimise service revenue and longer compressor life.
- Optimise resource efficiency due to predictive analysis.
- Messages/Mails for preventive actions on services and for any alarm/trip.
- No any charges in the basic version.

Secure iConn Data Management

Opens to API's, such as SAP, GE, Oracle, Microsoft

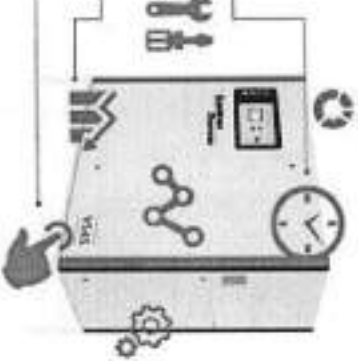


Analytical → Predictive → Cognitive

iConn-Welcome to Industrial Revolution 4.0

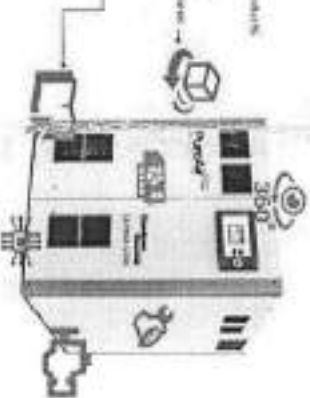
Basic data analytics

- Building understanding of product performance is the goal. This is the easier step outside but essential to help you understand your internal business plan.
- Maintenance modern can be planned based on real time data.
- Engineers and technicians can be optimized according to the machine activities.
- Operators can still learn, however from situations from machine to machine.
- This is high value and you change the advice that operators.



Augmented reality

- This is where the computer functions and products are overlaid with virtual services.
- Typical use case involve product life cycle distribution strategy for the set state engineers.
- It allows them to track down a component without a lot of time and paper for the systems.



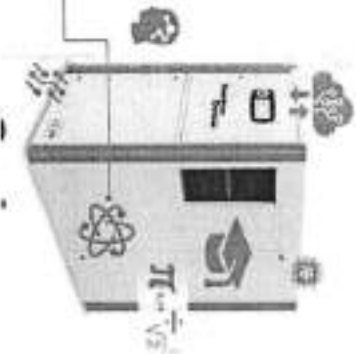
Predictive maintenance

- Accelerating your understanding of machine usage and usage data, the way not have enough data or good quality network.
- However, the issue of the big data, sensors have become more intelligent and data can.
- It helps you engineering schedule more precise based on probability of failure.
- Finally it accelerates your design strategy and helps for business case.



Cognitive

- This is where you reuse the predictive based advice that you learn your learn. However, before learning, they have to be taught.
- Can be large companies with AI-enabled tools are pushing the envelope that they are bringing into the machine.
- It automates, digitizes and to some process, example, gives recommendations for answers, before the human has analyzed or absorbed the data.





01

IN

Reliability & Efficiency without Compromise

Rotary Screw Compressors



Premium compressor design
and industry leading warranty

Li Series
30 - 45 kW



Intelligent Air Technology

The New Generation

Industries across the globe rely on CompAir rotary screw compressors for the supply of high quality compressed air. The CompAir LI series air compressor range incorporates the best of CompAir technology, design and quality. To deliver reliable, economical and efficient performance in a completely new package.

The LI series delivers high quality air at volumes at a pressure range between 7 and 10 bar and is available in air cooled versions.

High Efficiency Air End

LI series screw compression elements are manufactured in-house using the latest CNC rotor grinding machinery, coupled with on-line laser technology, in order to maintain precise manufacturing tolerances.

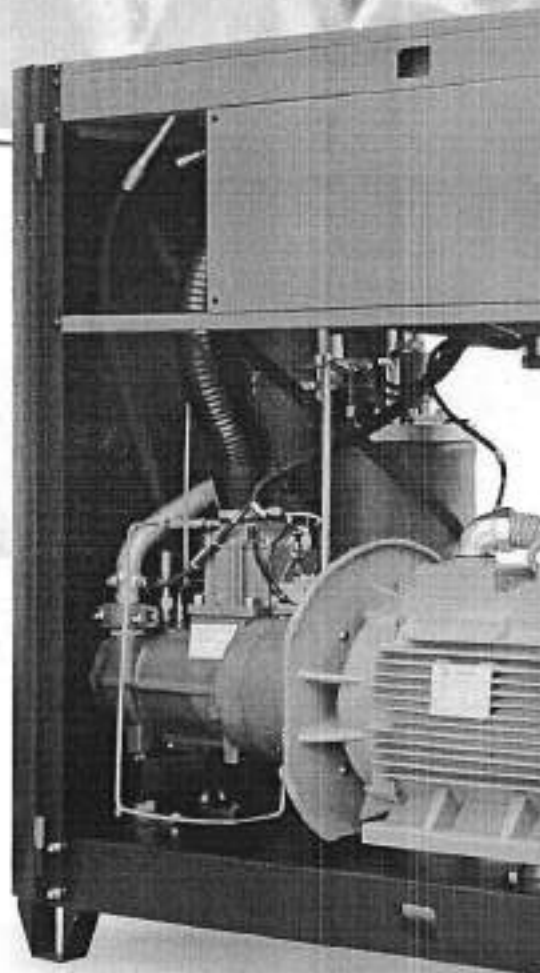
CompAir's commitment to quality ensures LI series compressors offer the highest levels of reliability and performance with low operating costs throughout the compressor's life.

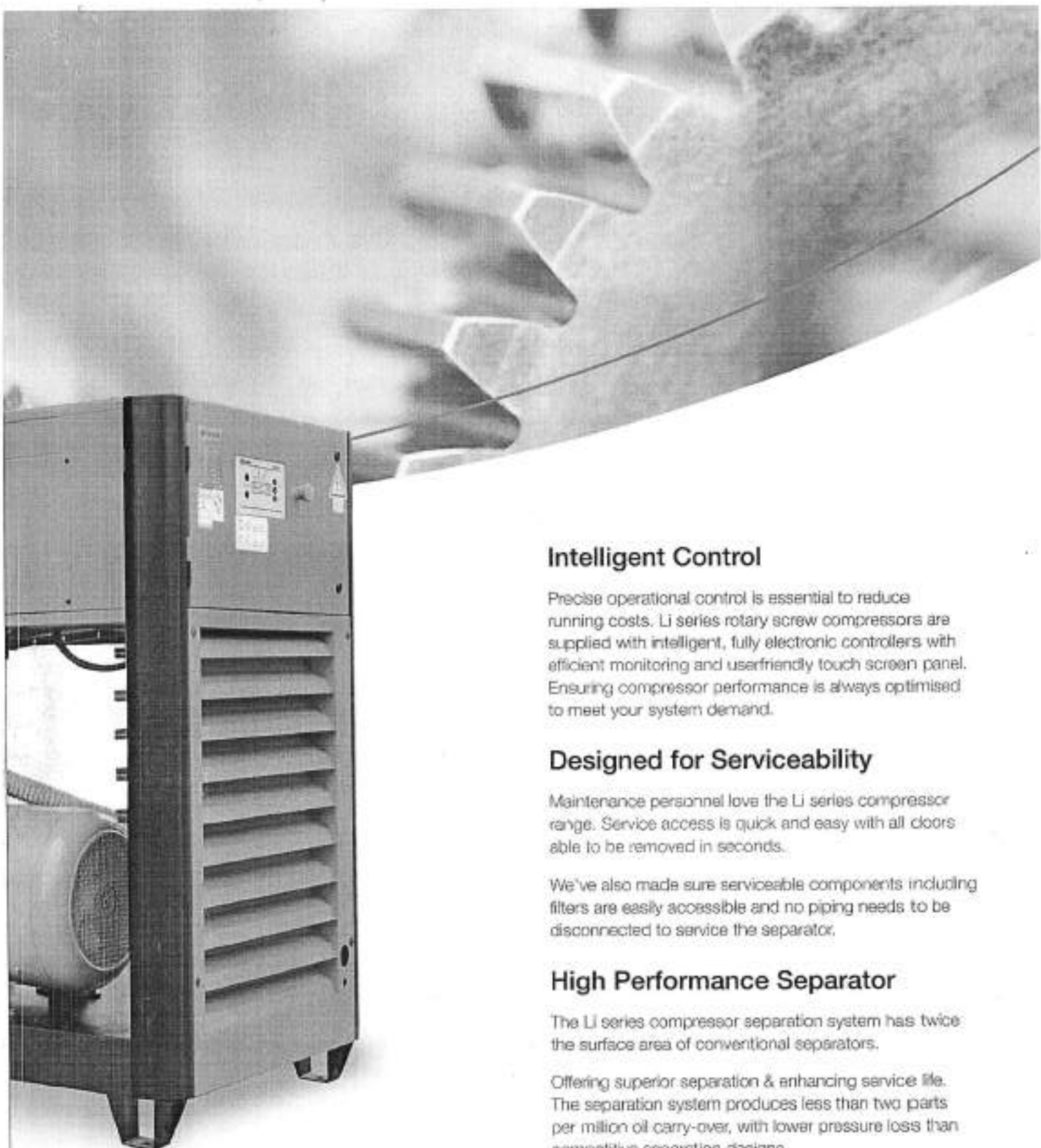
Maximum Durability

We maximise service life and durability by eliminating elastomer and thermoplastic pipe and tube in system pressure lines. Replacing them with corrosion resistant stainless steel tubing and passivated zinc coated carbon steel piping. For ease of maintenance we complete the connection with viton sealed grooved couplings and self sealing high pressure compression fittings.

Belt Free Drive

With direct or gear drive coupling, the belt free drive LI series compressor range not only reduces transmission losses, it improves efficiency and reduces noise. Most importantly, it delivers greater reliability and reduced maintenance costs.





Energy Efficient Motor

Premium high efficiency TEFC IE3 electric motors are fitted as standard to the entire LI Series screw compressor range. Reducing not only your power consumption but also reducing your CO₂ emissions.

Intelligent Control

Precise operational control is essential to reduce running costs. LI series rotary screw compressors are supplied with intelligent, fully electronic controllers with efficient monitoring and userfriendly touch screen panel. Ensuring compressor performance is always optimised to meet your system demand.

Designed for Serviceability

Maintenance personnel love the LI series compressor range. Service access is quick and easy with all doors able to be removed in seconds.

We've also made sure serviceable components including filters are easily accessible and no piping needs to be disconnected to service the separator.

High Performance Separator

The LI series compressor separation system has twice the surface area of conventional separators.

Offering superior separation & enhancing service life. The separation system produces less than two parts per million oil carry-over, with lower pressure loss than competitive separation designs.

Heavy Duty Inlet Filter

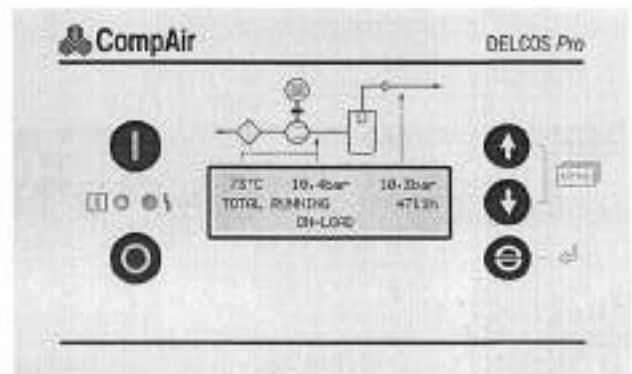
Dirt and dust that enter the compressor can adversely impact lubricant and machine life.

An inlet filter with an efficiency rating of 99% is standard equipment on the LI Series compressor range.

Delcos Pro Controller

The new control system ensures reliable operation and protects your investment by continuously monitoring the operational parameters. The Delcos Pro also has the capability to have programmable inputs and outputs, control additional equipment as well as providing the following features with a clear readable text.

- Discharge / line pressure & Air display
- Oil temperature display
- Total hours run and loaded hours
- Service due & status indicator
- Enhanced fault log monitor
- Real time clock
- Timer controlled stop / start
- Remote stop / start



- Auto restart on power failure
- Second pressure setting
- Status indication
- RS485-Modbus RTU

Li Series - Technical Data

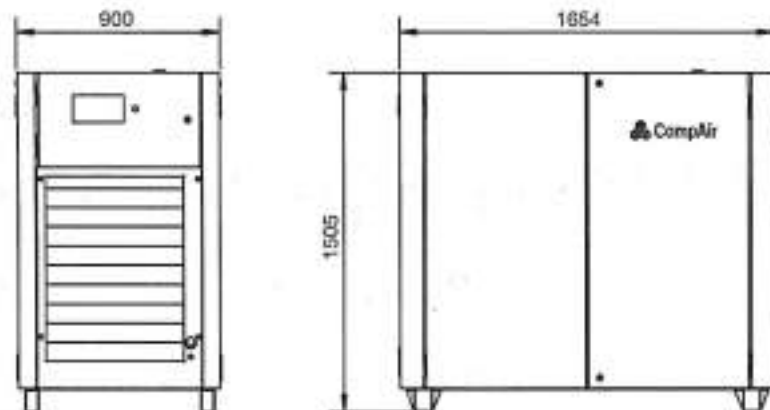
30 - 45 kW Fixed Speed

Compressor Model	Motor Rating [kW]	Free Air Delivered ¹⁾ [m ³ /min]			Noise Level ²⁾ [dB(A)]	Weight [kg]	Dimensions L x W x H [mm]
		7 bar g	8 bar g	10 bar g			
LI30	30	5.8	5.7	5.3	67	900	1654 x 900 x 1505
LI37	37	6.5	6.4	5.7	68	946	1654 x 900 x 1505
LI45	45	7.9	7.0	7.0	69	1020	1654 x 900 x 1505

1) Measured and stated in accordance with ISO 1217 Annex C at the following conditions: Inlet Air Pressure - 1 bar (14.5 psia), Air Inlet Temperature - 20°C (68°F), Humidity - 0% (dry), Cooling Water Inlet Temperature - 20°C (68°F).

2) +3 dB(A)

CompAir policy is one of continuous improvement and we therefore reserve the right to alter specifications and prices without prior notice. All products are sold subject to the Company's conditions of sale.



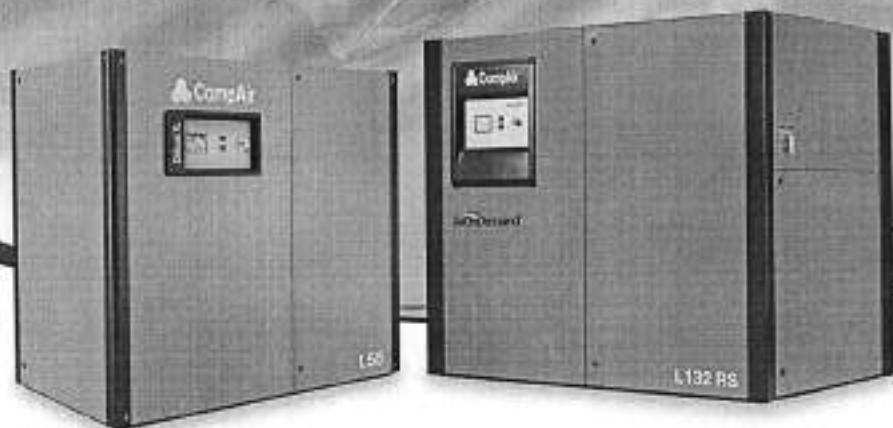
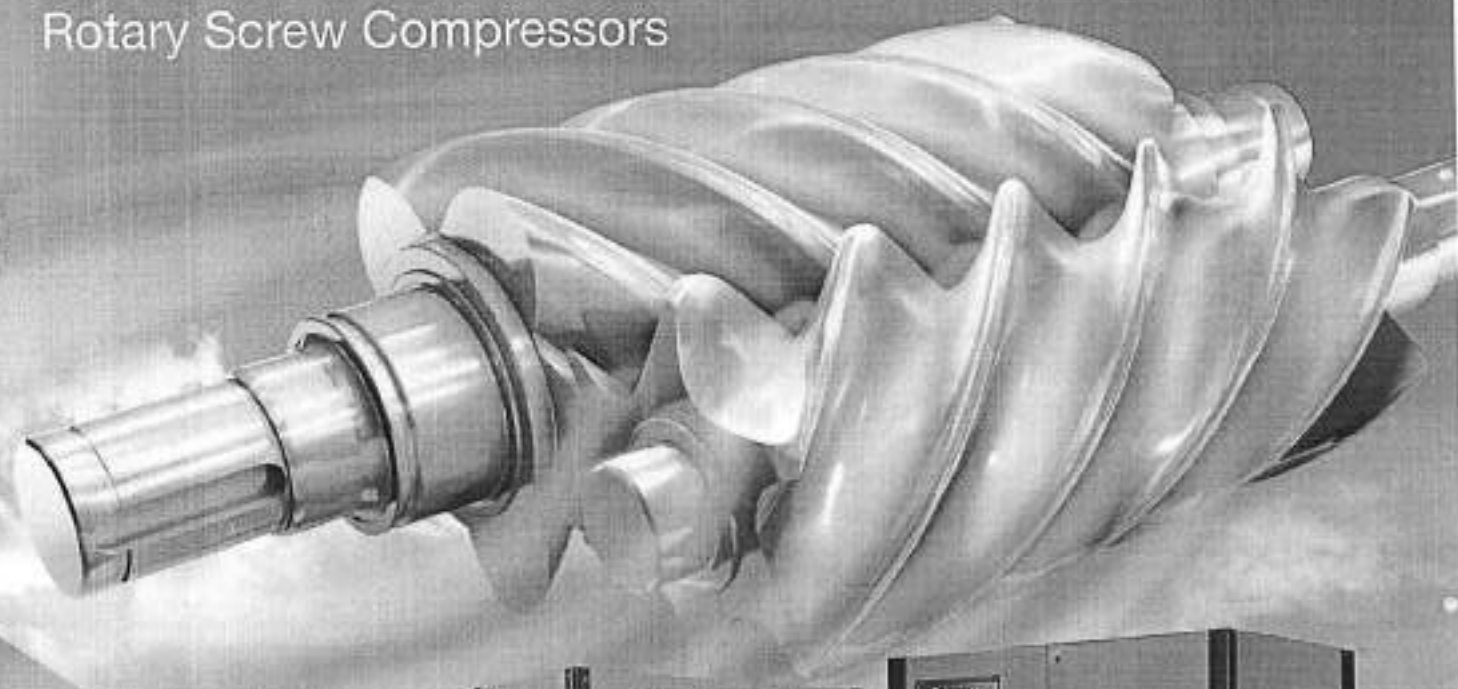


01

IN

Reliability & Efficiency without Compromise

Rotary Screw Compressors



Premium compressor design
and industry leading warranty

L45⁺ - L132
L55 RS - L132 RS
Fixed & Regulated Speed



Quality pays off

CompAir lubricated rotary screw compressors incorporate the very latest technological advances and guarantee a continuous supply of high quality compressed air.

The L-Series from CompAir

Well known in the industry for quality and reliability, CompAir continuously develops the L-Series achieving cutting edge performance and efficiency. The L45+ - L132 range of lubricated screw compressors comprises of fixed speed and regulated speed (RS) models. All models are optionally available with integrated heat recovery.

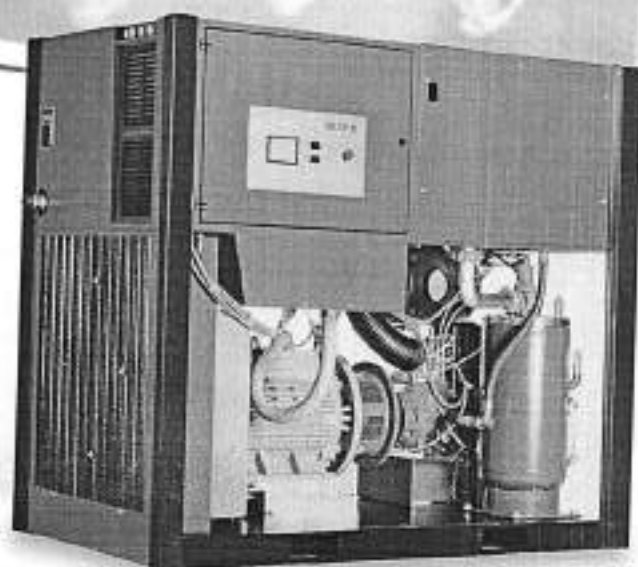
▶ **Pressure Range**
5 to 13 bar

▶ **Volume Flow**
2.20 to 22.88 m³/min

▶ **Motor Power**
45 to 132 kW



*Optional IE-4



Engineering Excellence

Compressors are more than just a financial investment, they are a key component in ensuring that manufacturers, processors and operators receive consistent, high quality low cost air.

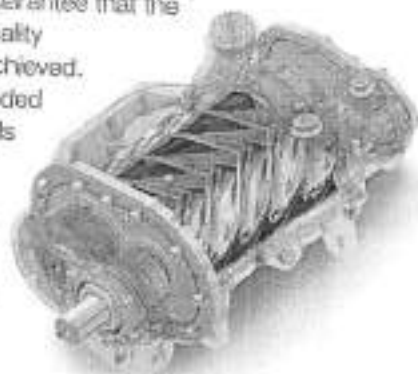
The screw compression element is the heart of the compressor and therefore CompAir keeps the design and manufacture in-house, using the latest CNC rotor grinding machinery, coupled with online laser technology.

The resulting reliability and performance ensures that operating costs will remain low throughout the compressor's life.

GERMAN
ENGINEERING
& DESIGN

Premium Efficiency Airend

The high output airend with slow rotational speed reduces energy costs. In addition to this, the innovative design of the fail safe shaft seal, integrated oil filter and oil regulation valve, ensures external hoses are reduced to a minimum to guarantee that the highest levels of quality and reliability are achieved. With the new extended warranty, the airends are covered **up to 5 years or 40,000 hours.***



* whichever is soonest.

Exceptional Reliability & Performance

▶ Large Surface After Cooler

Optimum cooling to ensure low operating and discharge temperatures.

▶ High Performance Separator Filter

Two stage filtration ensures highest quality air is delivered to your system (< 3 ppm oil carryover). The vessel has a hinged cover for easy maintenance.

▶ High Efficiency Electric Motor

The compressors are equipped with an energy saving IE3 electric motor and contribute to lower CO₂ emission levels.

▶ Thermostatically Controlled Motor Driven Fan

Highly efficient and extremely quiet fan allows compressor operation in the work place, plus the use of maximum duct length without further assistance.

▶ Long Life Premium Synthetic Oil Factory Filled

Specially developed premium lubricant with 8000 hours life to ensure optimum cooling and lubrication of air ends.

▶ Highest Quality Connections

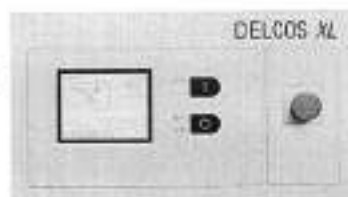
Solid hoses and pipe connections with vitor victaulic couplings.

Delcos XL Innovative Touch Screen Compressor Controller

The Delcos XL with its high resolution touch screen display is extremely user-friendly and self-explanatory. All functions are clearly structured in five main menus and are intuitively visual. The multilingual Delcos XL control system ensures reliable operation and protects your investment by continuously monitoring the operational parameters, which is essential for reducing your running costs.

Features & functions

- Home Page - instant overview of the compressor status
- Real Time Clock - allows pre-setting of compressor starting / stopping
- Second Pressure Setting
- Integrated Cooling and Dryer Control
- Fault History Log - for in-depth analysis
- Remote Control via Programmable Inputs
- Auto Restart after Power Failure
- Optional Base Load Sequencing
- SD Card - stores several run characteristics



Trend diagrams

With the ability to display detailed system analysis in the form of trend diagrams and graphs, operating parameters can be precisely set to maximise efficiency.

- Line / Network Pressure
- Motor Speed (Regulated Speed)
- On Load Hours / Total Hours Run & Average Volume Flow
- Weekly Average Volume Flow



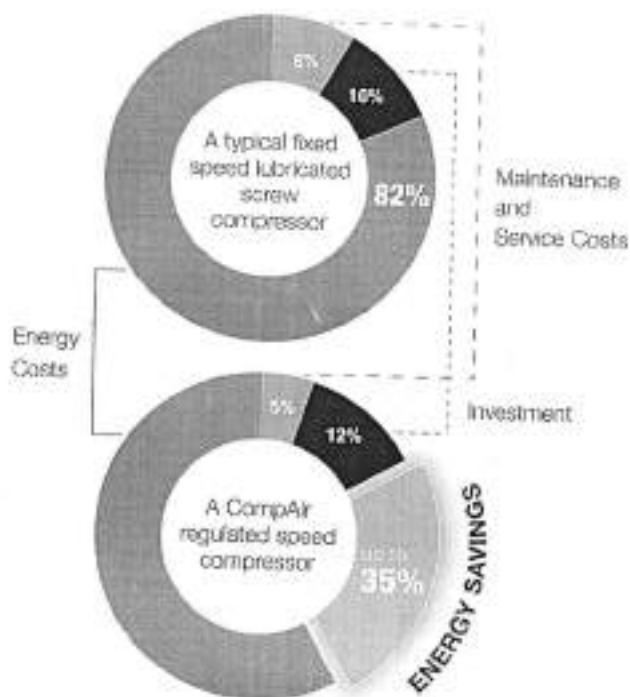
AirOnDemand

Regulated Speed Compressors

The Perfect Response to Individual Air Demands

Regulated speed compressors from CompAir can efficiently and reliably handle the varying air demand found in most plant air systems.

The annual cost of ownership can be significantly reduced using regulated speed technology.



CompAir RS Features are Your Benefits

The L-RS Series products are designed to obtain the greatest efficiency across the entire operating range.

- ▶ **Wide Regulation Range**
No cycles means substantial energy savings
- ▶ **Perfect Motor - Drive - Airend Design**
High efficiency across broad flow range

L75+ and L132 with Efficiency Upgrade

These models feature a an extra large airend with optimised rotor tip speed and achieve up to 8% energy savings.



Typical Airend Size



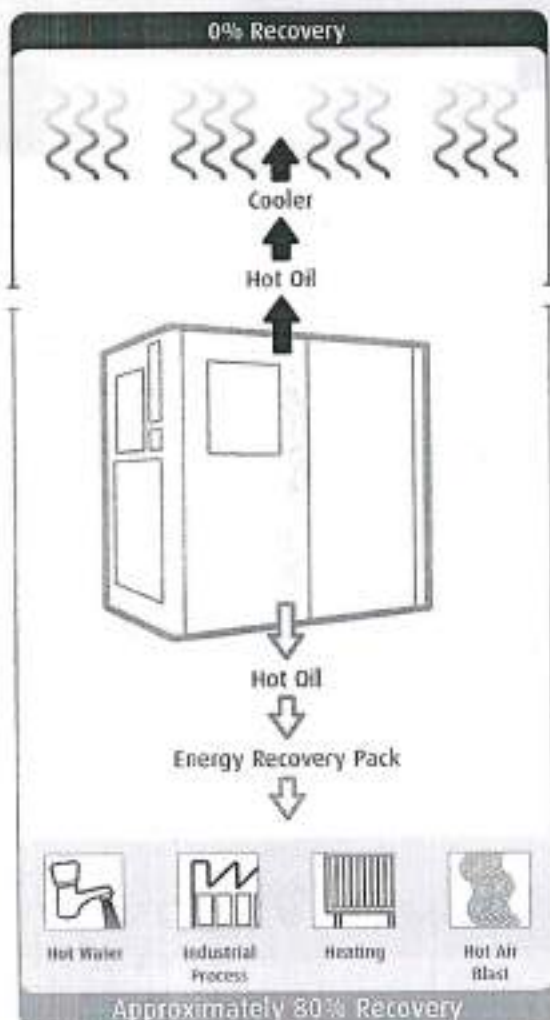
Larger Airend

AirPlus

Add Further Value

Integrated heat recovery

Significant energy and costs savings can be achieved with CompAir's efficient integrated heat recovery system. It can be either factory fitted or supplied as retrofit kit including all necessary pipe-work and fittings.



Visit www.compair.com to watch the heat recovery video and to access the energy savings calculation tool.

Motor Efficiency

As a standard, all compressors of this range are equipped with an energy efficient IE3 electric motor. To achieve even higher levels of efficiency they are optionally available with an IE4 motor.



Compressed Air Purification

A modern production system and process demands increasing levels of air quality.

A CompAir compressed air system utilising the latest technology provides an energy efficient solution at lowest life cycle costs.

- Water Separator
- Compressed Air Filter
- Condensate Drain Solution
- Compressed Air Refrigerant Dryer
- Heatless Desiccant Dryers
- Heat Regenerative Desiccant Dryers
- Nitrogen Generator
- SmartAir Master Multi Compressor Controllers



The best investment
protection you can get



5 Years Warranty Upgrade!

The CompAir Extend 5 Warranty and Service programmes will assure you up to 40,000 hours / 5 years¹. It is one of the most generous warranties available in the industry affording you total peace of mind.

Your Benefits :

- The CompAir authorised service provider will deliver a guaranteed quality of service
- An Extend 5 service agreement underpinning the warranty will enable accurate maintenance, budgeting and cost of ownership
- The use of genuine CompAir parts and lubricants will maximise compressor life and efficiency

¹ Warranty duration is up to 5 years / 40,000 hours on the whole package. Whichever is the shortest.

iConn Industry 4.0 Solution

Our compressors can be upgraded with iConn, the smart proactive real-time monitoring system, which gives you real-time knowledge about the compressed air system. It enables accurate production planning and total peace-of-mind protection, generating insight and statistics that keep you informed on performance, at the same time highlighting potential issues before they become a problem.



Compact Design - Easy Installation

The small footprint reduces the space required for installation.

Easy Servicing

The design of these packages ensures that the service points are readily accessible. The enclosure side doors are hinged and removable to allow complete access to all service points. The reduced number of moving parts further lowers the maintenance costs.

CompAir Genuine Spare Parts

Enjoy complete peace of mind.

Genuine CompAir parts and lubricants ensure that compressed air plant reliability and efficiency is maintained at the highest standards. CompAir spare parts and lubricants are distinguished by:

- Long service life, even under harshest conditions
- Minimum losses contributing to energy savings
- High reliability improves plant up-time
- Products manufactured with the strictest Quality Assurance Systems



L-Series - Technical Data

L45+ - L132 Fixed Speed

Compressor Model	Nominal Pressure	Drive Motor [kW]	FAD ¹⁾		Noise Level ²⁾ [dB(A)]	Weight [kg]	Dimensions L x W x H [mm]
	[bar g]		[m ³ /min]				
L45+	7.5	45	8.67		69	1726	2158 x 1223 x 1971
	10		7.40				
L55	7.5	55	10.89		69	1726	2158 x 1223 x 1971
	10		9.51				
	13		8.24				
L75+	7.5	75	14.72		69	2010	2158 x 1223 x 1971
	10		12.26				
L75	7.5	75	13.24		72	1785	2158 x 1223 x 1971
	10		12.44				
	13		10.43				
L90	7.5	90	17.45		73	2513	2337 x 1368 x 2039
	10		15.47				
	13		13.45				
L110	7.5	110	20.77		75	2614	2337 x 1368 x 2039
	10		18.83				
	13		16.21				
L132	7.5	132	22.87		76	2778	2337 x 1368 x 2039
	10		21.27				
	13		18.59				

L55 RS - L132 RS Regulated Speed

Compressor Model	Nominal Pressure [bar g]	Drive Motor [kW]	FAD ¹⁾ [m ³ /min]		Noise Level at 70% load ²⁾ [dB(A)]	Weight [kg]	Dimensions L x W x H [mm]
			min.	max.			
L55RS	5 - 10	55	2.34	10.31	67	1726	2158 x 1223 x 1971
L75RS	5 - 13	75	2.20	13.99	71	1800	2158 x 1223 x 1971
L75+RS	5 - 7	75	7.00	14.7	72	2010	2158 x 1223 x 1971
L90RS	5 - 13	90	4.69	17.74	72	2769	2337 x 1368 x 2039
L110RS	5 - 13	110	4.65	20.82	72	2770	2337 x 1368 x 2039
L132RS	5 - 13	132	4.65	22.84	74	2766	2337 x 1368 x 2039

- 1) Data measured and stated in accordance with ISO 1217, Annex A, Annex C & Annex E and the following conditions:
 Air Inlet Pressure: 1 bar a, Air Inlet Temperature: 20°C, Humidity: 0 % (Dry)
- 2) Measured in free field conditions in accordance with ISO 2151, Annexes 1 & 2 (3d V)

Global Experience – Truly Local Service

With over 200 years of engineering excellence, the CompAir brand offers an extensive range of highly reliable, energy efficient compressors, dryers and accessories to suit all applications.

An extensive network of dedicated CompAir sales companies and distributors across all continents provide global expertise with a truly local service, ensuring our advanced technology is backed up with the right support.

CompAir has consistently been at the forefront of compressed air systems development, culminating in some of the most energy efficient and low environmental impact compressors on the market today, helping customers achieve or surpass their sustainability targets.



CompAir Compressed Air Product Range

Advanced Compressor Technology Lubricated

- Rotary Screw*
- Piston
- Portable

Oil-Free

- Two Stage Rotary Screw*
- Water Injected Screw*
- Piston
- High Speed Centrifugal - Quantima®
- Rotary Scroll

Complete Air Treatment Range

- Filter
- Refrigerant and Desiccant Dryer
- Condensate Management
- Heat of Compression Dryer
- Nitrogen Generator

Modern Control Systems

- CompAir Controllers
- SmartAir Master Sequencer
- iConn - Smart Flow Management

Value Added Services

- Professional Air Audit
- Performance Reporting
- Leak Detection

Leading Customer Support

- Custom Engineered Solutions
- Local Service Centers
- Genuine CompAir Parts and Lubricants

* These ranges of units are available in Fixed and Regulated Speed versions.
CompAir policy is one of continuous improvement and we therefore reserve the right to alter specifications and prices without prior notice.
All products are sold subject to the Company's conditions of sale.