

**COMMERCIAL TERMS AND CONDITIONS**

**1. PRICES**

OUR BEST PRICES FOR 30 NM<sup>3</sup>/HR AMMONIA CRACKER UNIT WITH GAS PURIFIER & CONTROL PANEL SHALL BE : ~~RS 12.50 LAKHS~~ **Rs. 10,65,000/-**

The above prices are Ex-Works Ghaziabad

IGST @18%, ~~Packing @ 2% shall be charged.~~ **Included.**  
Transit insurance, Transportation and octroi shall be borne by Client.

**INSTALLATION AND COMMISSIONING CHARGES**

NIL. You shall provide free boarding and lodging to our erection and commissioning engineers. **Included.**

**PAYMENT TERMS**

**10% Advance.**  
~~25% Advance along with confirmed order.~~

~~65% payment along with 100% taxes & duties ( As applicable) against Proforma Invoice.~~

~~10% after installation & commissioning.~~

**Balance 90% + 100% GST within 7 days from the date of receipt of material.**

**DELIVERY**

**6 weeks**  
~~4-6 weeks~~ for supplies from the date of receipt of purchase order along with advance payment and 2 weeks for erection and commissioning of the Gas Plant & Training to your operator / Engineers.

**GUARANTEE**

For 12 months against any manufacturing defect from the date of commissioning or 18 months from the date of supply whichever occur earlier.

For SAM GAS PROJECTS PVT. LTD

MRIDUL GUPTA  
Director

*Discussed with Mr. Moudgal Gupta and agreed above date*

*11/02/23*

CHECKLIST	
DISCOUNT	<b>ed Rate as above</b>
PRICE BASIS : FOR SHIWADI	<b>FOR-JAL BHQ</b>
R & F	<b>INCL. / EXTRA</b>
COT/GST	<b>IGST! 18% Extra</b>
DELIVERY	<b>6 weeks from the date of order</b>
PAYMENT	<b>10% Advance, balance within 7 days from the date of receipt of material</b>
WARRANTY	<b>one year from the date of commissioning</b>
<b>Rajopal</b>	

## INSPECTION, TESTING, ERECTION & COMMISSIONING

### INSPECTION & TESTING

Stage wise inspection of bought out and fabricated equipment is done by our engineers .The same is then assembled and tested before dispatch. You may also , if desire can carry out stage wise / final inspection at our works .Our performance can only be shown at your site after commissioning .

### ERECTION & COMMISSIONING

Immediately after you have kept equipment on foundation , we shall depute our engineer for supervision of erection . All instruments and interconnected piping shall be done as per drawings submitted . After erection is completed , our engineer would start commissioning which shall include testing and carrying out of pre commissioning of equipment's and instruments .After commissioning , we shall give you performance trial for 24 Hrs and also demonstrate parameter guaranteed in terms of purity at rated flow and pressure of gas .

### TRAINING

We shall train your maintenance staff and plant operator to enable them understand the operation and maintenance aspects of the gas generator. An operation manual shall also be provided to you for further understanding of equipment .

## SCOPE OF SUPPLY

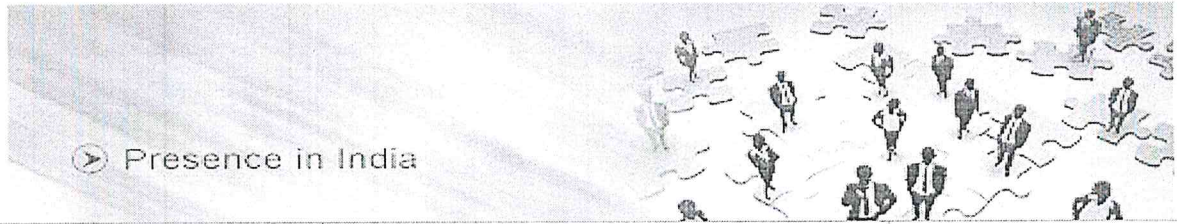
- 10.1) Ammonia manifold complete with isolation valves
- 10.2) Ammonia Filter
- 10.3) Pressure regulator to reduce pressure to **1.0 KG/CM2 G**
- 10.4) Oil / Liquid separator
- 10.5) Heat interchanger
- 10.6) Ammonia Flowmeter
- 10.7) Ceramic fiber lined electrically heated furnace
- 10.8) Retort filled with Nickel catalyst
- 10.9) Finned cooler complete with moisture separator.
- 10.10) Cracked Gas Purifier with Desiccant
- 10.11) Cylinder manifold (3+3)
- 10.12) Fully wired electrical control panel
- 10.13) Instrumentation like low & high pressure switches, safety valves, flow switches, temp. controllers etc
- 10.14) All inter connected piping

## EXCLUSIONS

- All civil work.
- All incoming Electrical cabling upto our Panel and earthing connection .
- All piping between Ammonia Cracker and your Furnace.
- You shall provide welding set, Gas Cutting Set, necessary tools and tackles to our crew during erection and commissioning of the Gas Generator at you site.

### SALIENT FEATURES OF OUR DESIGN

1. We shall demonstrate **30 Nm<sup>3</sup>/Hr capacity on Continuous Basis** at Final Outlet.
2. Our Ammonia cracking furnace is specially designed with ceramic insulation, which makes it light weight. This insulation ensures there is no loss of heat from the furnace body. Also ammonia cracker has been provided with an operable door which helps in easy inspection of the heating element & retort .
3. Also heating elements can be changed in a few minutes. Further the enlarged block design prevents heating element failure.
4. Ammonia Regulator is specially designed which ensures perfect pressure reduction with a stand by system.
5. All Flexible hose pipes in Ammonia Service are Teflon lined.
6. Electrical Furnace is designed with very low watt density heaters which lasts for years .
7. Retort to the Ammonia cracking Furnace is superior grade HU alloy and not Inconel alloy. It shall be single piece centrifugal casted retort with no longitudinal welding joint. It is 100% X-Rayed
8. Ammonia cracking catalyst used is high Nickel content catalyst to give complete Ammonia cracking.
9. Various safety control instruments are provided which switch-off the unit and give alarm incase of any wrong operation of trouble in the gas generator.



		
HINDALCO	TATA STEEL	ADANI PORT
 <p>Jindal Aluminium Ltd.</p>	<p>National Aerospace Laboratories</p> 	 <p>Energy for India</p>
JINDAL	NAL -BANGALORE	CAIRN ENERGY
	 <p>Count on us</p>	 <p>Indian Acrylics Limited</p>
IPCA LAB.	MARUTI UDYOG LTD.	INDIAN ACRYLICS
	 <p>Lucas-TVS Limited</p>	
MSP METALLICS	LUCAS TVS	PRISM CEMENT
		
JK LAXMI CEMENT	FEDERAL MOGUL LTD.	INDO RAMA

## TECHNICAL SPECIFICATIONS

### AMMONIA CRACKER

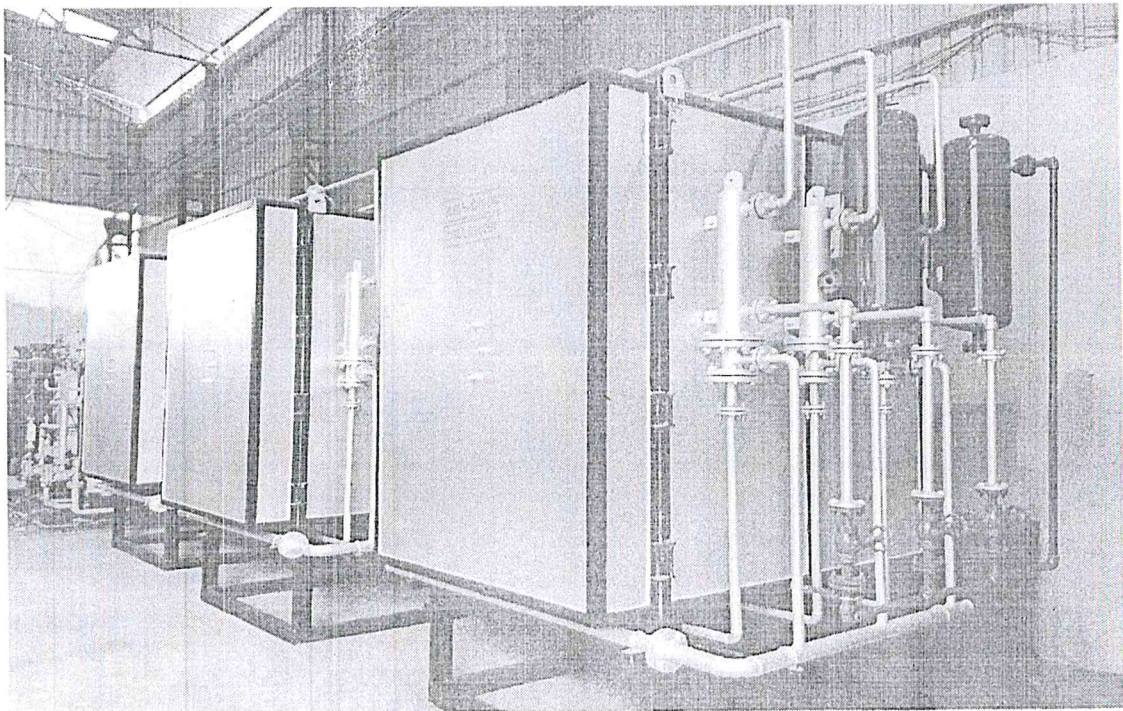
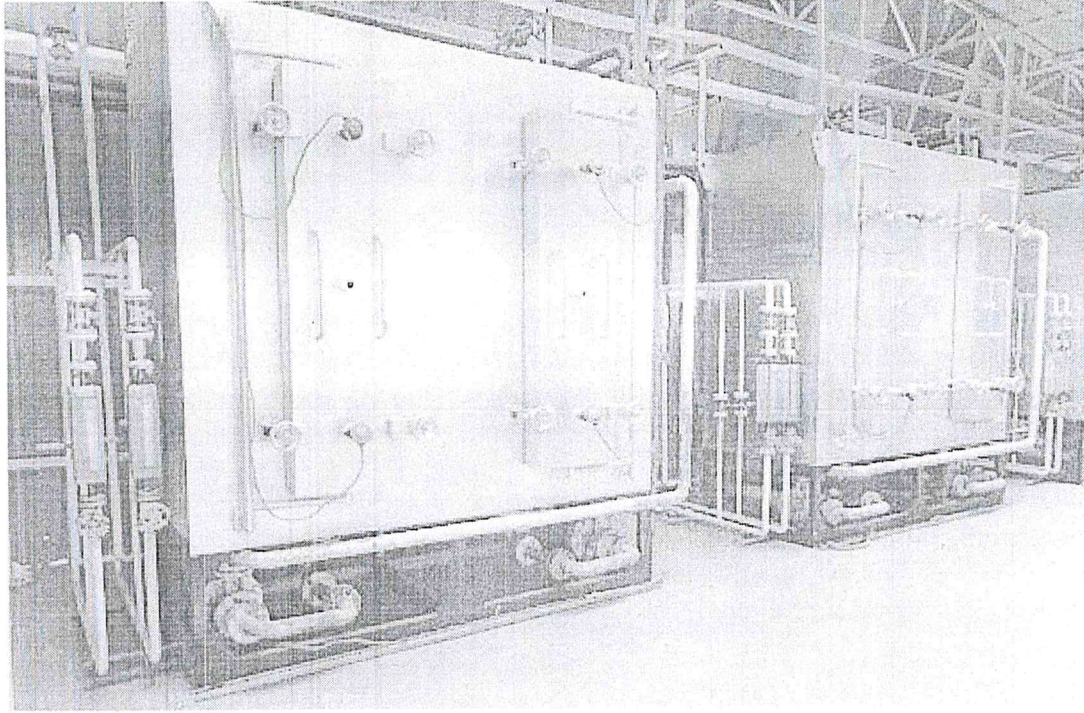
1. Capacity of Cracker & purifier	:	<b>30 Nm3 / Hr</b>
2. Composition of the Cracked Gas	:	
N2	:	25 %
H2	:	75 %
3. NH3 after Dryer	:	Less than 2 ppm
4. O2 at the outlet	:	Less than 2 ppm
5. Dew point after Dryer	:	<b>(-) 60Deg. C.</b>
6. Discharge pressure	:	<b>0.5 Kg/cm2g</b>

### UTILITES REQUIREMENT

➤ Power Consumption		
<b>415 VAC, 3 Ph, 50 Hz</b>	:	27 KW for Ammonia Furnace 4.5 KW for Purifier Heater
➤ Ammonia from cylinders	:	12 Kg/Hr
➤ Instrument Air	:	2 Nm3/Hr @ 5 Kg/cm2
➤ Cooling Water	:	2 Nm3/Hr @ 32 deg C & 2.5 Kg/cm2 pressure

### SPACE REQUIREMENT

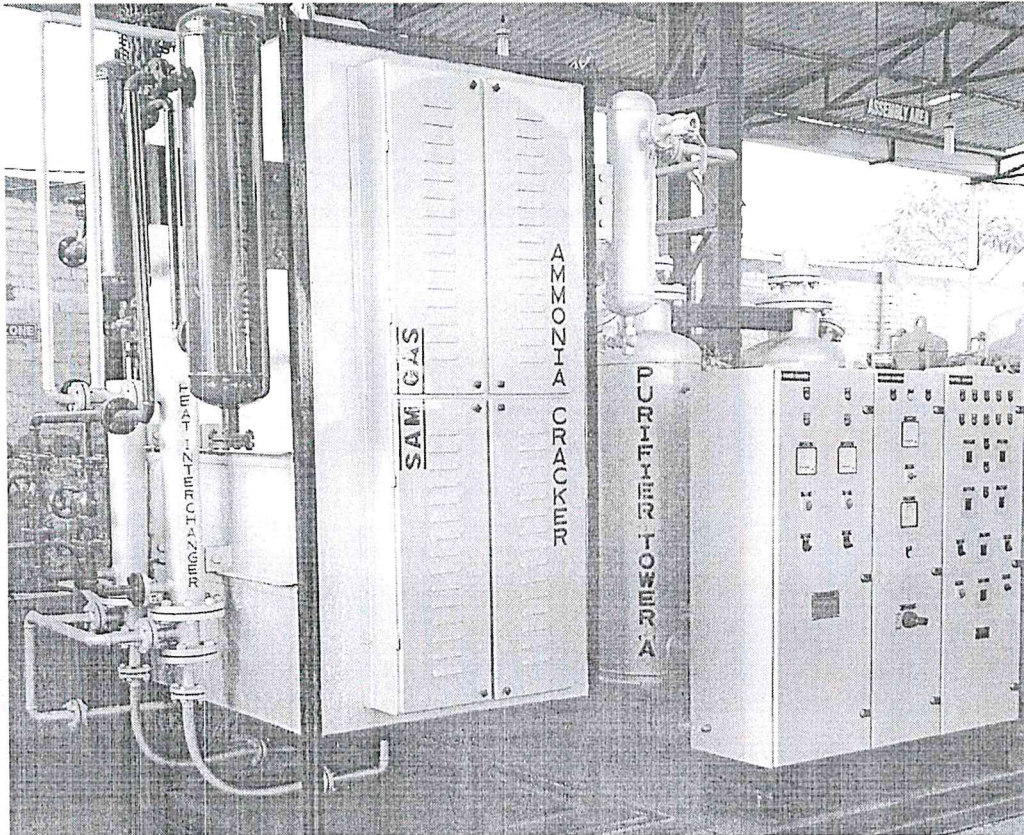
Length	:	5.0 M
Width	:	2.0 M
Height	:	3.0 M
Installation	:	Indoors







# TECHNO – COMMERCIAL PROPOSAL



( AN ISO 9001: 2015 COMPANY )

**REGD. OFFICE**  
C-25/5, KOLABA CENTRE,  
MIDDLE CIRCLE,  
CONNAUGHT PLACE  
NEW DELHI-110001 (INDIA)

**H.O & WORKS**  
E-30, UDYOG KUNJ  
UPSIDC INDUSTRIAL AREA,  
(OPP. MEHRAULI RAILWAY STATION )  
GHAZIABAD-201302 (U.P)

PH: 0120- 6403741-43,  
FAX : 0120- 2761032  
E-Mail : info@samgasindia.com  
: samgasprojects@gmail.com  
Web site : www.samgasindia.com  
: www.psa-nitrogen.com

Branch Offices : Bangalore , Hyderabad , Chennai