

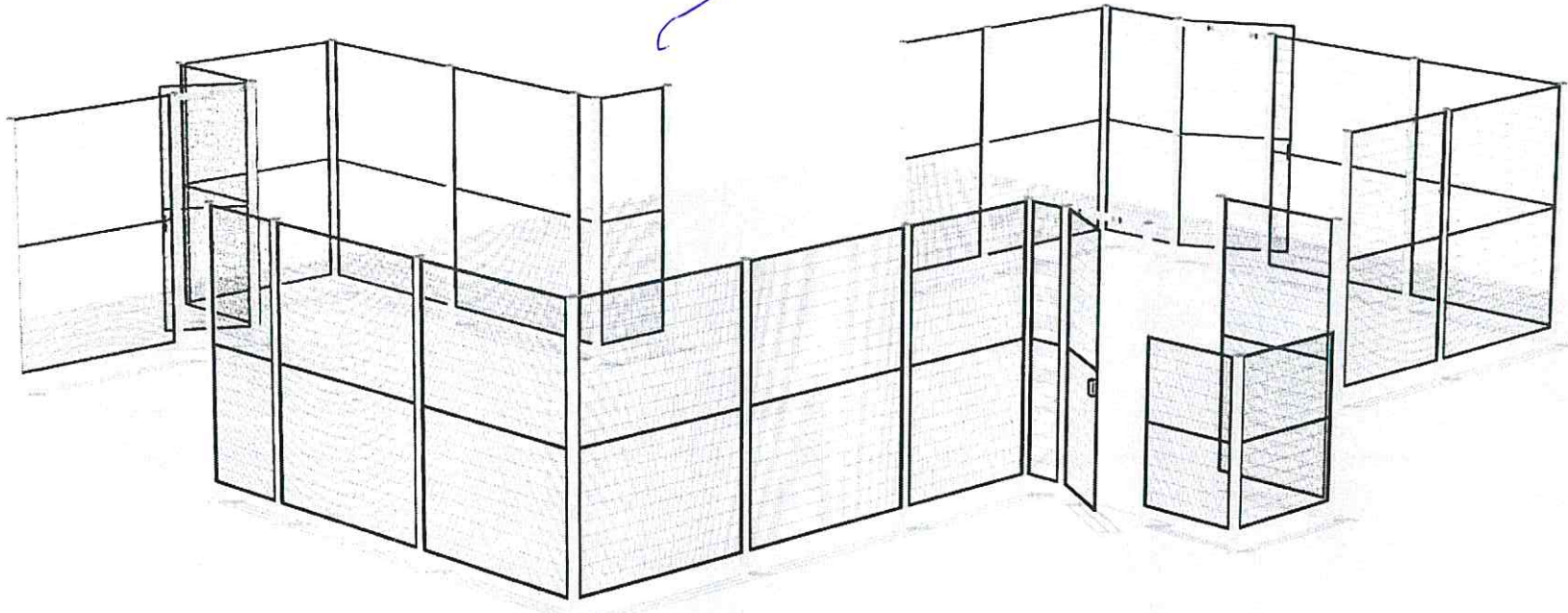


Kudamm Corporation

Solutions in Industrial Automation & Energy Conservation

*Final Rate
Confirmation*

8/15





Standard Terms and Condition for Quotation

Terms and conditions:

1. Payment – ~~100%~~ Advance Payment. *30 days*
2. GST – IGST 18% Extra.
3. Delivery – ~~8-10~~ weeks max from the date of order confirmation. *4 weeks*
4. Warranty – Two year from date of invoice. ✓
5. Offer validity – One Month from the date of Quote.
6. Delivery – Ex-Works Bangalore. ✓
7. The field support at site will be extra if Kudamm Corporation has to support for Installation @ Rs ~~30000~~/day. ✓ *PDR Bhinvesh Roy*
8. The legal jurisdiction for all legal issues is Bangalore – India only.
9. HS Code – 73089090. For Fencing and HSN Code for Switches -8536101.
10. In case of any transit damage of Material, Kudamm Corporation after ascertaining the cause of damage and the reason for damage will decide on replacement or modification. Kudamm Corporation Cannot take any LD clause against damages. *RS 30000/Location*

*for Installation 3 days
bonding & handling
for 3 days will be arrange by JAL
for staff category.*

Specification of Smart Fix Machine Guarding :

Fixing System : Smart Fix Bracket.
 Panel : ST 20 Panel.(Frame 19x19mm wire 3x3mm mesh size 100x20mm)
 Panel Height : 2050mm Height, Total Height of the system is 2200mm
 (2050 +150mm Floor Gap) ✓
 Color : As per attached Material List.

JAL
 03/7/23



Material

Object
Safety Fence

Date
01/07/2023

Quotation Nr.
KC-06-23-LP00218

Page
1

Customer
Jindal Aluminium

Delivery Address
Jindal Aluminium Bhiwadi, INDIA

Your ref.
Mr Satyam Paliwal

Our Ref.
Mr Ankit Pachauri
9582227803

Amount Article Description

(MG) Machine Guarding

Finish: Yellow RAL 1018

1	29601502	Post 60x40x1400mm
23	29601522	Post 60x40x2200mm

Finish: Black RAL 9005

1	95000002	Single Door Length 1000 mm Height 2050 mm, Right, Without lock
2	29601522	Post 60x40x2200mm Yellow RAL 1018
1	20100606	Meshpanel ST20 2050x1000
2	95000001	Single Door Length 700 mm Height 2050 mm, Left, Without lock
4	29601522	Post 60x40x2200mm Yellow RAL 1018
2	20070606	Meshpanel ST20 2050x700
1	20080626	Meshpanel ST20 1250x800
1	20100626	Meshpanel ST20 1250x1000
1	20020606	Meshpanel ST20 2050x200
1	20030606	Meshpanel ST20 2050x300
2	20070606	Meshpanel ST20 2050x700
1	20080606	Meshpanel ST20 2050x800
3	20100606	Meshpanel ST20 2050x1000
2	20120606	Meshpanel ST20 2050x1200
12	20150606	Meshpanel ST20 2050x1500

Finish: Other

27	36700074	Kit bracket Smart Fix
1	36700096	Kit corner Smart Fix
60	89050090	Expander bolt M10x80 FZB
1	36904000	SmF TÜV sign

Extra components

Finish: Grey RAL 7037

2	35500601	U-section UR 2200mm
---	----------	---------------------

Finish: Other

3	36904990	Kit Hinge TC 60x40
---	----------	--------------------

Other Components

Finish: Other

1	88754235	Assembly instructions for Smart Fix
---	----------	-------------------------------------

Total Sum 266,895.00

Installation: 30000.00

Total Value: 296895.00



Ref: - TPS/Offer/2023/043_R02

Date: 16.06.2022

**Jindal Aluminum
Bhiwandi, Rajasthan**

Kind Attn. Mr. Satyam Paliwal Deputy Manager - Projects
Subject: Budgetary offer for Safety Fencing and Gates.

Reference: Offer prepared against the reference of enquiry received as per layout provided by Press Supplier for Safety Fencing for safety fence Gates.

Dear Sir,

We are in receipt of your above referred enquiry for area guarding of process line at Jindal Aluminum Bhiwandi site. through Safety Fence and Doors.

We prepared offer for supply and installation of Safety Fence and Doors (Sliding and Hinge Type) as per schematic layout provided by customer. Height considered 2000mm and 1400 mm. with optional access control solution.

In our Scope of Work

1. Supply and installation as per details attached.
2. All tools & Tackles.
3. PPEs, ESI & PF.

We have quoted against the same as per the discussion, please find enclosed herewith our "Techno Commercial proposal" in line with your scheme and requirement.

We hope our offer is in line with your requirement and the same is acceptable to you for further opportunities.

Please feel free to contact us for further information / clarifications if required.

Thanking you and assuring you of our best services at all times.

Yours faithfully,



Anshul Vyas.

Mobile: 9826240007

Mail ID: anshul@tpsautomation.in

TPS AUTOMATION PVT LTD, New Delhi

GST No: 07AACCT4378B1ZG

TPS AUTOMATION PVT. LTD.

B-20/18, M.B. Extn., Badarpur, New Delhi – 110044

Phone: +91-9990046922 / 9911829302

E-mail: info@tpsautomation.in

GST No. 07AACCT4378B1ZG

CIN No. U93091DL2006PTC148586



1. Technical details of Safety Fence and Doors Make TPS: -

With the above reference enquiry for safety fence and safety Doors, please note that we are providing same type of systems with safety fence and safety doors with optional access control system at different leading steel industries specially at rolling Mills area including installation and commissioning against the requirement on turkey basis. Please find our technical offer and confirmation against the specifications provided by the customer: -

We provide: -

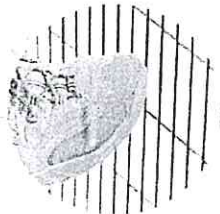
- International standards fencing having modular safety components such as safety fences, doors and accessories as per International Standards.
- These guarding systems are of low carbon steel construction.
- Upright posts (Poles) and panel (Mesh) frame are a solid extrusion for extra durability.

We compliance below Safety Standers: -

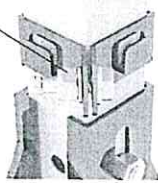
- **EN ISO 14120:** General requirements for the design and manufacture of fixed and movable guards.
- **EN ISO 13857:** Safety distances to prevent the contact of dangerous Areas with upper and lower limbs
- **ISO 13854- EN 349:** Minimum gaps to avoid crushing parts of the human body

General requirements for the design and construction of fixed and movable guards

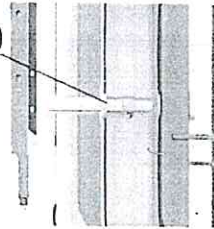
- ❖ **Climbing should be inhibited**
 - **Mesh to be designed in such a way that will not allow climbing**, international standards fencing having all the horizontal components of the mesh welded on the inside of the panel.
- ❖ **Captive Fastening**
 - **Mesh after disassembly should not lose any of its component.** Loss of any single component may weaken the strength of the fence after reassembly that will affect Impact test Criteria.
 - International standards fencing having captive fastening to avoid loss of any component including nut / bolt & CLIP.



PATENTED
EN953+A1
ISO 14120
Machinery
Directive
2006/42/CE



PATENTED
EN953+A1
ISO 14120
Machinery
Directive
2006/42/CE



❖ **IMPACT TEST CRITERIA**

- AS PER NEW GUIDELINE OF ISO 14120 Safety Fence should fulfil IMPACT TEST CRITERIA. A load of 100 KG hit the linear fence at 20.45 Km/Hr at a height of 1420mm from ground.
- Mesh has lead its test according to the most strict level of impacts requested by the AUTOMOTIVE INDUSTRY, up to 1600 joules.

TPS AUTOMATION PVT. LTD.

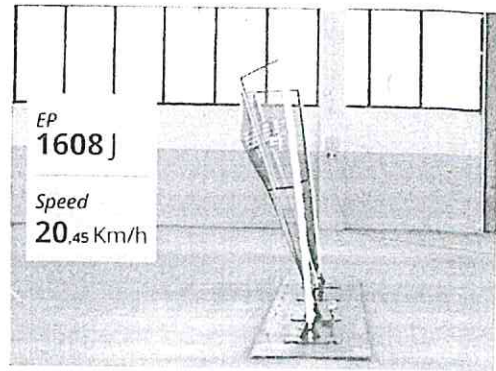
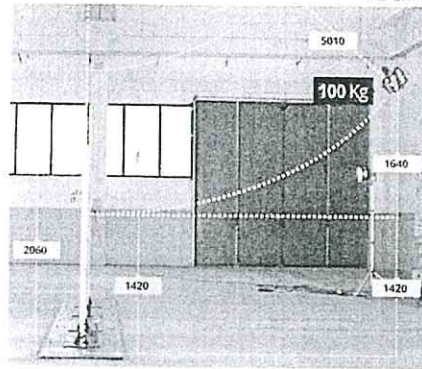
B-20/18, M.B. Extn., Badarpur, New Delhi – 110044

Phone: +91-9990046922 / 9911829302

E-mail: info@tpsautomation.in

GST No. 07AACCT4378B1ZG

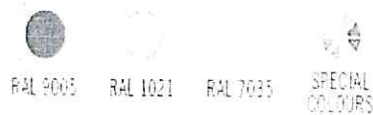
CIN No. U93091DL2006PTC148586



❖ **Colours**

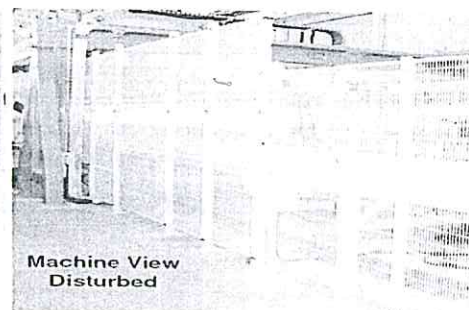
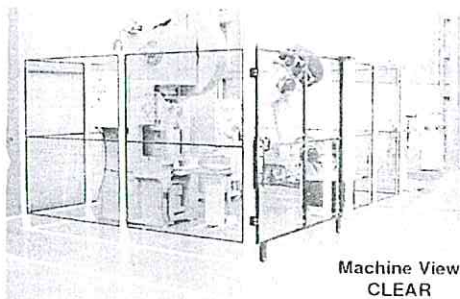
- When observation of the process is required, guards shall not be painted in bright colour. It is the hazard to be highlighted in bright colour.
- We provide Three "standard" RAL: yellow 1021, black 9005 and grey 7035 and the possibility to create special colours on request. There is no limit to the personalisation!
- We suggest BLACK Mesh + YELLOW Pillar. Yellow colour indicates the presence of Safety Fence & Black colour allow clear view of the process.
- (Note: Safety Standard does not specify any colour. It is as per requirement of the user. Generally Yellow colour is used to indicate presence of safety fence.)

COLOURS:



❖ **Machine Viewing**

- Adequate viewing of the process is must. Fence or any of its part should not be the obstacle to the internal view of the machine / process.
- Specific design of our mesh. Few horizontal lines. Adequate open area and colour. No stroboscopic effects!



❖ **Safety of machinery –**

Safety distances to prevent hazard zones being reached by upper and lower limbs.

- This standard establishes values for safety distances in both industrial and non-industrial environments to prevent machinery hazard zones being reached. The Safety Distance to prevent arms and legs entering a danger area.

TPS AUTOMATION PVT. LTD.

B-20/18, M.B. Extn., Badarpur, New Delhi – 110044

Phone: +91-9990046922 / 9911829302

E-mail: info@tpsautomation.in

GST No. 07AACCT4378B1ZG

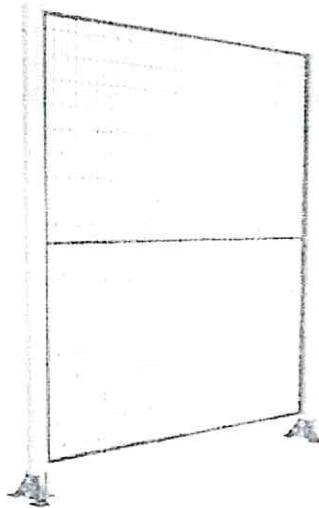
CIN No. U93091DL2006PTC148586



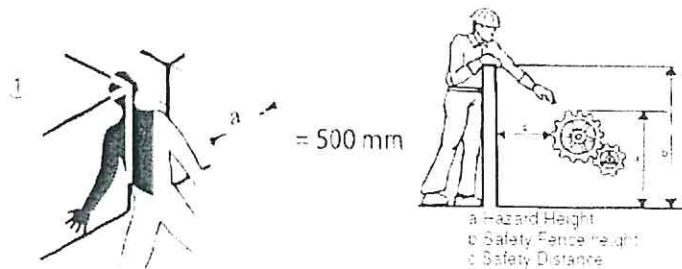
Table 2

Dimensions in millimeters

Height of dangerous area a	Height of the protection structure b										
	1000	1200	1400	1600	1800	2000	2200	2400	2500	2700	
2700	-	-	-	-	-	-	-	-	-	-	-
2600	300	800	700	600	600	500	400	300	100	-	-
2400	1100	1000	900	800	700	600	400	300	100	-	-
2200	1300	1200	1000	900	800	600	400	300	-	-	-
2000	1400	1300	1100	900	800	600	400	-	-	-	-
1800	1500	1400	1100	900	800	600	-	-	-	-	-
1600	1500	1400	1100	900	800	500	-	-	-	-	-
1400	1500	1400	1100	900	800	-	-	-	-	-	-
1200	1500	1400	1100	900	700	-	-	-	-	-	-
1000	1500	1400	1000	800	-	-	-	-	-	-	-
800	1500	1300	900	600	-	-	-	-	-	-	-
600	1400	1300	800	-	-	-	-	-	-	-	-
400	1400	1200	400	-	-	-	-	-	-	-	-
200	1200	900	-	-	-	-	-	-	-	-	-
0	1100	500	-	-	-	-	-	-	-	-	-



- ❖ It specifies minimum gaps relative to parts of the human body and is applicable when adequate safety can be achieved by this method.
 - Safety fences can be placed from a minimal distance of 120mm up to 600mm
 - In case of moving machinery minimal safety distance of 500mm required to grant the safety of the operator from crushing hazards



TPS AUTOMATION PVT. LTD.

B-20/18, M.B. Extn., Badarpur, New Delhi – 110044

Phone: +91-9990046922 / 9911829302

E-mail: info@tpsautomation.in

GST No. 07AACCT4378B1ZG

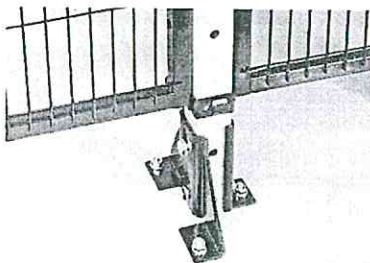
CIN No. U93091DL2006PTC148586



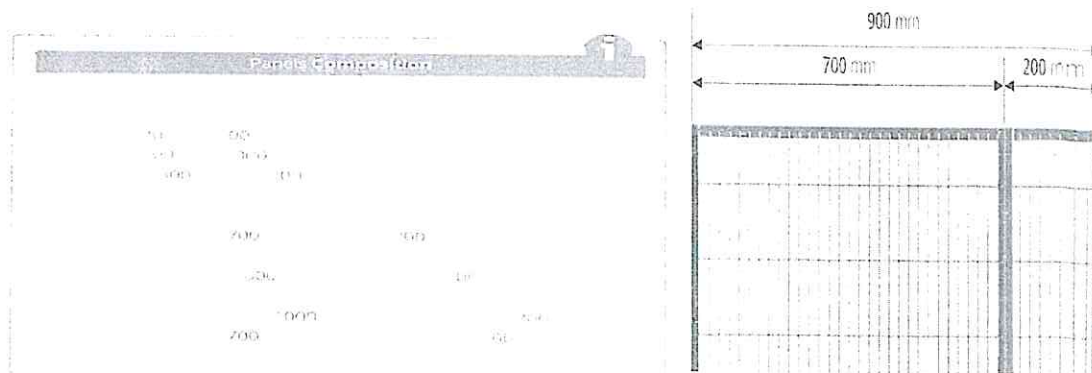
The safety distance from the hazard C is a relation between the height of the fence B and the height of the hazard A itself.

Note: Apart from this standard, we need to follow ISO 10218-2 (for Industrial Robots safety requirement), ISO 14119 (Interlocking devices designed for Guards) and ISO 13849-1 (for Safety related parts of control systems Principle & Design)

Type of safety Fences we have: -



Basic Series



Pole: -

- 40x40 mm floor sections
- Height is 2000mm/1400 mm
- Assembled adjustable foot
- Colour: RAL1021 (Epoxy polyester powder coating)
- Prefixed Holes (along with Fasteners)
- Mesh
- 20x20 mm frame panels
- Height is 1840/1240 mm
- Colour: RAL9005 (Epoxy polyester powder coating)
- Each single joint of the mesh is Welded
- Prefixed Holes

TPS AUTOMATION PVT. LTD.

B-20/18, M.B. Extn., Badarpur, New Delhi – 110044

Phone: +91-9990046922 / 9911829302

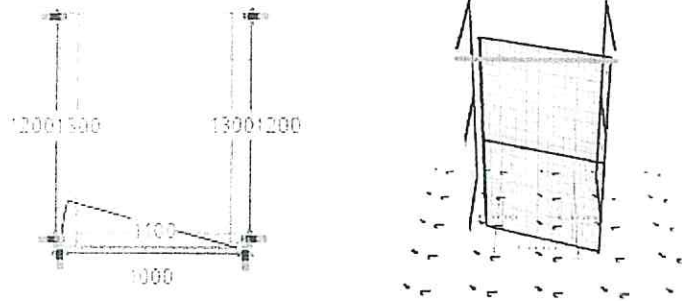
E-mail: info@tpsautomation.in

GST No. 07AACCT4378B1ZG

CIN No. U93091DL2006PTC148586



- **Hinge Gate:** - Design, Engineering, Supply of Safety Fence Single Hinge Gate as per below mentioned details based on customized solution as per site requirement sample drawing below:-

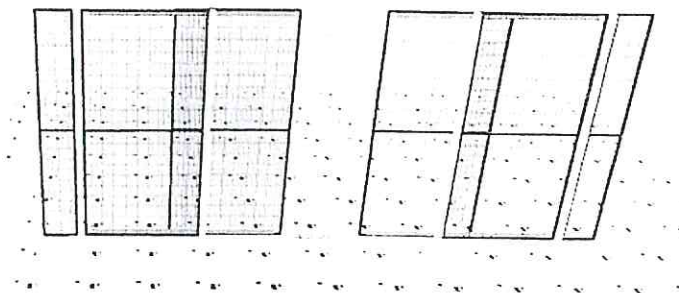
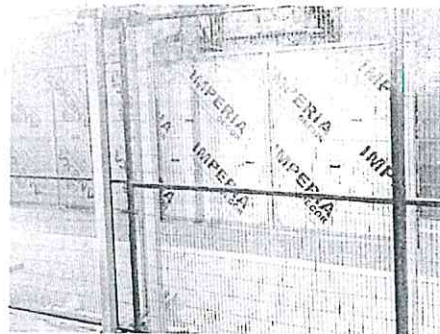


- **Slide Gate:** - Design, Engineering, Supply of Safety Fence for Slide Gate as per below mentioned details and mentioned BOM.

Sliding Door Without Guide to leave the passage totally free for crane movement, Overhead cranes, the movement is achieved through ground wheels and low friction bearing assemble with the structure of two no's or bearing assemble with three



posts.



TPS AUTOMATION PVT. LTD.

B-20/18, M.B. Extn., Badarpur, New Delhi – 110044

Phone: +91-9990046922 / 9911829302

E-mail: info@tpsautomation.in

GST No. 07AACCT4378B1ZG

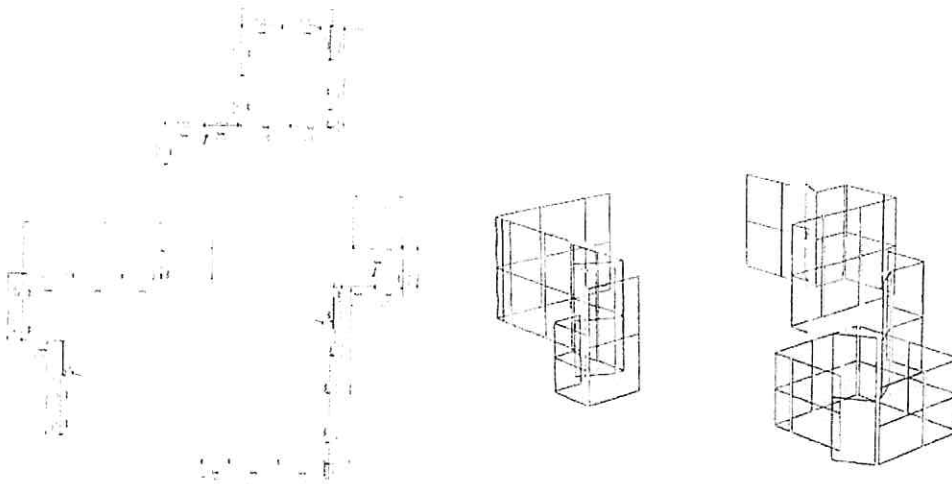
CIN No. U93091DL2006PTC148586



Drawing No#1: -

FENCING 2 PG.NO 1 OF 2

FENCING 2 PG.NO 2 OF 2



Bill of material: -

SN	TPS Part Code	Products	Qty
Fencing Solution			
1	MP180015	Standard mesh panel (WxH mm) 1500x1840, 22x100 grid, 20x20 frame, RAL 9005 BLACK, With Plastic Cap 20 mmX2	8
2	MP180012	Standard mesh panel (WxH mm) 1200x1840, 22x100 grid, 20x20 frame, RAL 9005 BLACK, With Plastic Cap 20 mmX2	5
3	MP180010	Standard mesh panel (WxH mm) 1000x1840, 22x100 grid, 20x20 frame, RAL 9005 BLACK, With Plastic Cap 20 mmX2	8
4	MP180008	Standard mesh panel (WxH mm) 800x1840, 22x100 grid, 20x20 frame, RAL 9005 BLACK, With Plastic Cap 20 mmX2	1
5	MP180007	Standard mesh panel (WxH mm) 700x1840, 22x100 grid, 20x20 frame, RAL 9005 BLACK, With Plastic Cap 20 mmX2	1
6	MP180003	Standard mesh panel (WxH mm) 300x1840, 22x100 grid, 20x20 frame, RAL 9005 BLACK, With Plastic Cap 20 mmX2	6
7	MP100015	Small mesh panel (WxH mm) 1500x1040, 22x100 grid, 20x20 frame, RAL 9005 BLACK, With Plastic Cap 20 mmX2	5
8	MP100012	Small mesh panel (WxH mm) 1200x1040, 22x100 grid, 20x20 frame, RAL 9005 BLACK, With Plastic Cap 20 mmX2	3
10	MP100008	Small mesh panel (WxH mm) 800x1040, 22x100 grid, 20x20 frame, RAL 9005 BLACK, With Plastic Cap 20 mmX2	1
12	MP100003	Small mesh panel (WxH mm) 300x1040, 22x100 grid, 20x20 frame, RAL 9005 BLACK, With Plastic Cap 20 mmX2	2
13	P402000L	Linear Poles/Post: Overall protection Height 2000mm, 40X40mmX2mm Powder coated, Colour RAL1021 with Baseplate: Forged with 3/4 anchor points, with Anchor, fastners (3 set), plastic cap 40 mm (1 nos) Black/Grey Colour	18

TPS AUTOMATION PVT. LTD.

B-20/18, M.B. Extn., Badarpur, New Delhi – 110044

Phone: +91-9990046922 / 9911829302

E-mail: info@tpsautomation.in

GST No. 07AACCT4378B1ZG

CIN No. U93091DL2006PTC148586

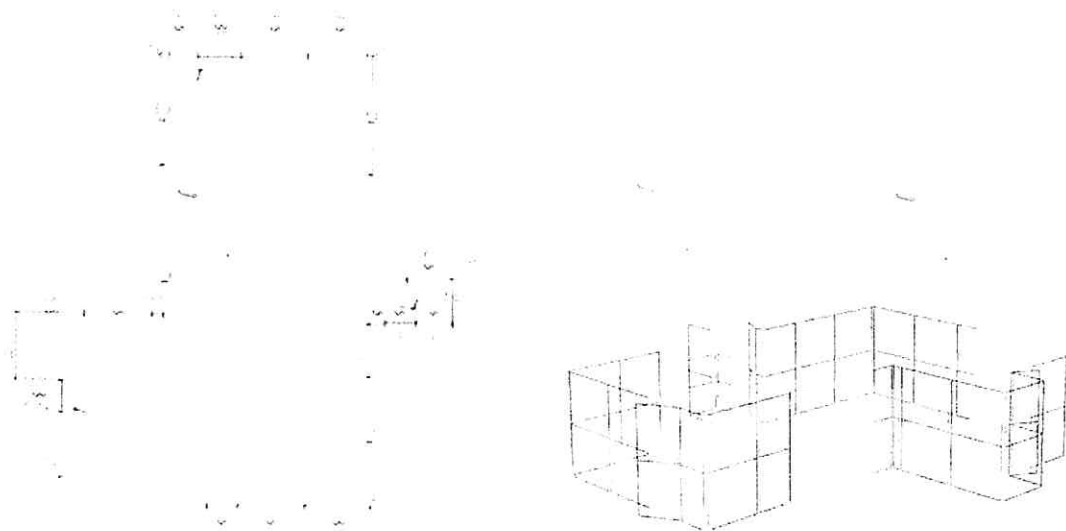


14	P402000A	Angular Poles/Post: Overall protection Height 2000mm, 40X40mmX2mm Powder quoted, Colour RAL1021 with Baseplate: Forged with 3/4 anchor points, with Anchor, fasners (3 set), plastic cap 40 mm (1 nos) Black/Grey Colour	10
15	P401200L	Linear Poles/Post: Overall protection Height 1200mm, 40X40mmX2mm Powder quoted, Colour RAL1021 with Baseplate: Forged with 3/4 anchor points, with Anchor, fasners (3 set), plastic cap 40 mm (1 nos) Black/Grey Colour	6
16	P401200A	Angular Poles/Post: Overall protection Height 1200mm, 40X40mmX2mm Powder quoted, Colour RAL1021 with Baseplate: Forged with 3/4 anchor points, with Anchor, fasners (3 set), plastic cap 40 mm (1 nos) Black/Grey Colour	2
17	BP4016L1	Pole Baseplate_1: T Type Forged with 3/4 anchor points, Colour RAL 9005, Modular design, with Anchor, fasners (3 set) and Grouting Anchor Fasners (3 sets),	36
18	BP4016L2	Pole Baseplate_2: L Type Forged with 3/4 anchor points, Colour RAL 9005, Modular design.	36
19	CS1840DC	Cutting set 1840 mm length, D and C Fram	2
Door Accessories (For 4 Hinge Doors and 1 Sliding Doors)			
1	HSD00001	Hinges set (Two Hinges per Door)	8
2	HDPT0001	Handle (Two Handles per Door)	8
3	UGBA0003	Upper guide Adaptor/Brackets for Hinge Door (Two Brackets per Door)	8
4	UG150030	Upper guide for Hinge Door	4
5	SDK00100	Sliding Door Kit	1

Drawing No#2: -

FENCING 2 PG.NO 2 OF 2

FENCING 2 PG.NO 1 OF 2



TPS AUTOMATION PVT. LTD.

B-20/18, M.B. Extn., Badarpur, New Delhi – 110044

Phone: +91-9990046922 / 9911829302

E-mail: info@tpsautomation.in

GST No. 07AACCT4378B1ZG

CIN No. U93091DL2006PTC148586



Bill of material: -

SN	TPS Part Code	Products	Qty
Fencing Solution			
1	MP180015	Standard mesh panel (WxH mm) 1500x1840, 22x100 grid, 20x20 frame, RAL 9005 BLACK, With Plastic Cap 20 mmX2	12
2	MP180012	Standard mesh panel (WxH mm) 1200x1840, 22x100 grid, 20x20 frame, RAL 9005 BLACK, With Plastic Cap 20 mmX2	2
3	MP180010	Standard mesh panel (WxH mm) 1000x1840, 22x100 grid, 20x20 frame, RAL 9005 BLACK, With Plastic Cap 20 mmX2	4
4	MP180008	Standard mesh panel (WxH mm) 800x1840, 22x100 grid, 20x20 frame, RAL 9005 BLACK, With Plastic Cap 20 mmX2	1
5	MP180007	Standard mesh panel (WxH mm) 700x1840, 22x100 grid, 20x20 frame, RAL 9005 BLACK, With Plastic Cap 20 mmX2	4
6	MP180003	Standard mesh panel (WxH mm) 300x1840, 22x100 grid, 20x20 frame, RAL 9005 BLACK, With Plastic Cap 20 mmX2	2
7	MP100010	Small mesh panel (WxH mm) 1000x1040, 22x100 grid, 20x20 frame, RAL 9005 BLACK, With Plastic Cap 20 mmX2	1
8	MP100008	Small mesh panel (WxH mm) 800x1040, 22x100 grid, 20x20 frame, RAL 9005 BLACK, With Plastic Cap 20 mmX2	1
9	P402000L	Linear Poles/Post: Overall protection Height 2000mm, 40X40mmX2mm Powder quoted, Colour RAL1021 with Baseplate: Forged with 3/4 anchor points, with Anchor, fasteners (3 set), plastic cap 40 mm (1 nos) Black/Grey Colour	20
10	P402000A	Angular Poles/Post: Overall protection Height 2000mm, 40X40mmX2mm Powder quoted, Colour RAL1021 with Baseplate: Forged with 3/4 anchor points, with Anchor, fasteners (3 set), plastic cap 40 mm (1 nos) Black/Grey Colour	10
11	P401200A	Angular Poles/Post: Overall protection Height 1200mm, 40X40mmX2mm Powder quoted, Colour RAL1021 with Baseplate: Forged with 3/4 anchor points, with Anchor, fasteners (3 set), plastic cap 40 mm (1 nos) Black/Grey Colour	1
12	BP4016L1	Pole Baseplate_1: T Type Forged with 3/4 anchor points, Colour RAL 9005, Modular design, with Anchor, fasteners (3 set) and Grouting Anchor Fasteners (3 sets),	31
13	BP4016L2	Pole Baseplate_2: L Type Forged with 3/4 anchor points, Colour RAL 9005, Modular design.	31
14	CS1840DC	Cutting set 1840 mm length, D and C Fram	2
Door Accessories (For 3 no of Hinge Doors)			
1	HSD00001	Hinges set (Two Hinges per Door)	6
2	HDPT0001	Handle (Two Handles per Door)	6
3	UGBA0003	Upper guide Adaptor/Brackets for Hinge Door (Two Brackets per Door)	6
4	UG150030	Upper guide for Hinge Door	3

Scope of Work/Supply: -

Our scope of Work: -

1. Supply of safety Fence and Gates with all accessories will be in our scope.
2. Installation of safety fence gate with chemical grouting will be in our scope.

TPS AUTOMATION PVT. LTD.

B-20/18, M.B. Extn., Badarpur, New Delhi – 110044

Phone: +91-9990046922 / 9911829302

E-mail: info@tpsautomation.in

GST No. 07AACCT4378B1ZG

CIN No. U93091DL2006PTC148586



- 3. Mounting and fitting of doors. ✓
- 4. Supply and installation as per details attached ✓
- 5. All tools & Tackles in Supplier's scope ✓
- 6. PPEs, ESI & PF in Supplier's scope ✓

Customer Scope of Work: -

- 1. Surface should be flat for installation of safety fence and gates.
- 2. Electrical accessories like locks, sensors, cables, conduits, relays etc. in Customer scope
- 3. SOP and Gate pass will be provided by customer.
- 4. Cable and Cable laying will be in customer scope.
- 5. Lodging Boarding will be provided by customer.

Commercial offer: -

SN	Product Description	Supply Unit Rate	Service Charges
1.	Design, Engineering of Safety Fence with Gates as per above mentioned Drawing and BOM as per Drawing no#1 with 4 Hinge and 1 Sliding Doors.	4,70,000.00	57,000.00
2.	Design, Engineering of Safety Fence with Gates as per above mentioned Drawing and BOM as per Drawing no#2 with 3 Hinge Doors.	3,40,000.00	42,000.00

Spoke to Mr Anshul. Quoted Rate is fine

Notes: -

- ❖ Supply and Services PO should be provided separately by the customer.
- ❖ Service activity will be completed in single visit for completion of project. Lodging Boarding will be provided by customer.

Terms & Conditions:

Price Basis: Ex Works-Delhi. ✓

Packing charges: Extra@1 % of basic value of supply. ✓

Freight: Extra@1 % of basic value of supply. ✓

GST: Extra@ 18% ✓

Service Tax: Extra@18% ✓

Delivery: Within 8-10 weeks from receipt of approval from Department. ✓ 8 week

Supply Payment: 30% Payment advance with PO and Balance 70% with 100% GST against PI. ✓

Validity: 30 days. ✓

FOR. Bhivwari NIL

Payment

We trust our above offer would meet your kind approval and look forward to receiving your favorable order soon.

Warranty - 12 months.

Thanking you and assuring you of our best attention,

Yours faithfully,

Two person boarding & lodging for three day will be provided by JAL



Anshul Vyas
 Mobile: 9826240007
 Mail ID: anshul@tpsautomation.in
 TPS AUTOMATION PVT LTD, New Delhi
 GST No: 07AACCT4378B1ZG

TPS AUTOMATION PVT. LTD.

B-20/18, M.B. Extn., Badarpur, New Delhi - 110044
 Phone: +91-9990046922 / 9911829302
 E-mail: info@tpsautomation.in
 GST No. 07AACCT4378B1ZG
 CIN No. U93091DL2006PTC148586