

**QUOTATION**

Tel : +91 80 22226666 22226666  
 Fax : +91 80 22226666  
 Site : www.newindiaelectricals.com  
 www.newindiaelec.com  
 New India Electricals Ltd.  
 Power House # 18, I.E. Road Bangalore 560 004, INDIA

**ANNEXURE 1 – TECHNO COMMERCIAL DETAILED OFFER (Ref No. Cust/ 54717 Dt.25.05.23)**

**PUMPSETS AS PER BELOW MENTIONED TECHNICAL SPECIFICATIONS**

SI No	1	2	3
PUMP MAKE	KIRLOSKAR	KIRLOSKAR	KIRLOSKAR
Liquid	Water	Water	Water
Specific Gravity	1	1	1
Viscosity (CST)	1	1	1
Temperature (Deg C)	Ambient	Ambient	Ambient
Capacity	23.5LPS	24LPS	300M3/Hr
Differential Head (Mtrs)	24	31	40
Pump Type	Horizontal, Centrifugal, Monobloc Pump		End Suction Back Pullout Type
Pump Model	KDI-1030+	KDI-1537+	DBxe 150/40 (MOC 83)
Normal Speed (RPM)	3000	3000	1500
Suction x Delivery (mm)	100 X 100 ✓	100 X 100	200 X 150
Efficiency	-	-	79.64%
<b>Motor Details</b>			
Motor Make			CG / Siemens
Motor KW / HP	7.5 / 10 ✓	11 / 15	55 / 75
Motor Frame	-	-	250MX
Motor Type	Sq.Cage, TEFC, IE2	Sq.Cage, TEFC, IE2	Sq.Cage, TEFC, IE2
Class of Insulation	F	F	F
Class of Protection	IP 55	IP 55	IP 55
<b>PUMP MOC</b>			
Casing	Cast Iron	Cast Iron	Cast Iron
Impeller	Cast Iron	Cast Iron	Cast Iron
Shaft	Stainless Steel	Stainless Steel	45 C8
Shaft Sleeve	Stainless Steel	Stainless Steel	SS 410H
St Box Sealing	Mechanical Seal ✓	Mechanical Seal ✓	Gland Packing ✓
Price Per Pumpset	40,406 ✓	50,595	3,17,330
Quantity (Nos)	1	1	2
Total Price of Pumpset	40,406	50,595	6,34,660
Total Order Value	above line are for 7,25,661		
Scope Of Supply	Pump + Motor + Accessories		
DELIVERY (Weeks)	Ready stock	Ready stock	8 - 10 Weeks
* Accessories : Inclusive of Baseplate, Coupling, Coupling Guard.			
P&F	INCL. EXTRA Extra		
GST/IGST	18% GST Extra		

DELIVERY : item No. 1, 2 and Ready stock and 3, 8 to 10 weeks  
 PAYMENT : 30% advance and 70% ag against the PI  
 GOW/CTC : 12 month warranty  
 VALIDITY :  
 CHECKED BY : Ruben M

# GURUSABH POWER



Crompton Greaves  
All India No. 1 Dealers

E-34, NEHRU GROUND, N.I.T FARIDABAD

Ph: 9643101720 - 23 | 0129-2426894, 95, 96

Info@gurusabhpower.com | www.gurusabhpower.com



All Type of Motors, Pumps  
Gearbox & AC drives

GST-06AEP PG9423EIZH

Ref No. : GSB/PD/K/ 950

DATE : 29.05.23

M/S : JINDAL ALUMINIUM LIMITED

VENDER CODE-G 5568 ENQUIRY - EN230500774 DATE -24.05.2023

Dear Sir, Please find the best competitive offer against your enquiry. We request you kindly place your valuable order according to the offer as below. Kindly feel free to contact us at any time for any query.

## MAKE-KIRLOSKAR

7.5HP | 5.5KW | 3000-RPM | 3PH | C.I IMPELLER MECHANICAL SEAL | SIZE -100\*100| MODEL KDI-822 | MONOBLOC - PUMP

NET EACH : 30100/-

*Final Price*

15HP | 11 KW | | 3000-RPM | 3PH | C.I IMPELLER MECHANICAL SEAL | SIZE -100\*100| MODEL KDI-1537 | MONOBLOC - PUMP

NET EACH : 46300/-

*Final Price*

3) | 7.5HP | 5.5KW | 3PH | 3000-RPM | C.I IMPELLER MECHANICAL SEAL | SIZE -100\*100| MODEL KDS - 822 | MONOBLOC -PUMP

NET EACH : 30950/-

4) | 7.5HP | 5.5KW | 3PH | 3000-RPM | C.I IMPELLER MECHANICAL SEAL | SIZE -100\*100| MODEL KDS- 1537 | MONOBLOC -PUMP

NET EACH : 47550/-

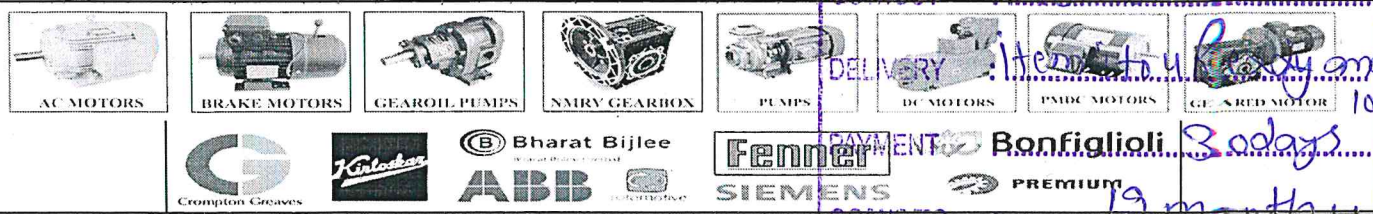
5) KIRLOSKAR MAKE HORIZONTAL SPLIT CASING PUMP 150/38B CAST IRON IMPELLER GLAND PACK FITTED COUPLE WITH 45KW | 60HP | 1450RPM | 3PH | FOOT MTD | IE2 |

NET EACH : 252600/-

*Final Price Properly*

## CHECK LIST

DISCOUNT : *above Price are final*  
 PRICE BASIS : FOR BHIWADI *Exw - For Bhiwadi*  
 P & F : INCL...../EXTRA *Extra*  
 GST/IGST : *18% GST Extra*  
 DELIVERY : *10 to 15 days*  
 PAYMENT : *Bonfiglioli 30 days*  
 WARRANTY : *12 month warranty*  
 VALIDITY : .....  
 CHECKED BY : *Ruberly*



# GURUSABH POWER

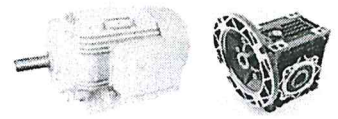


Crompton Greaves  
All India No. 1 Dealers

E-34, NEHRU GROUND, N.I.T FARIDABAD

Ph : 9643101720 - 23 | 0129-2426894, 95, 96

Info@gurusabhpower.com | www.gurusabhpower.com

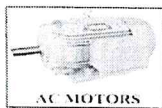


All Type of Motors, Pumps  
Gearbox & AC drives

## TERMS & CONDITIONS:-

- ⚡ G.S.T : EXTRA AS APPLICABLE @18%.
- ⚡ DELIVERY : ITEM 1-4 READY STOCK SUB TO PRIOR SALE
- ⚡ : ITEM 5 10-15 DAYS AFTER RECEIPT OF YOU P.O
- ⚡ PAYMENT : FOR TRANSPORT GODOWN
- ⚡ VALIDITY : 7 DAYS.

REGARD  
PADMA / KIRAN  
(9643101722)



AC MOTORS



BRAKE MOTORS



GEAR OIL PUMPS



NMRV GEARBOX



PUMPS



DC MOTORS



PMDC MOTORS



GEARED MOTOR



PREMIUM

SIEMENS

Re: Enquiry No:EN230500774Bhiwadi Division

Yogesh Kumar Sharma <sales5@alliedautomation.in>

Wed 5/31/2023 11:51 AM

To: Bhiwadi Purchase <purchase.bhiwadi@jindalaluminium.com>

Cc: Rajgopal C. Sarda <rajgopal@jindalaluminium.com>; Rajesh Kumar <rajeshv@alliedautomation.in>

Dear Sir,

**ALLIED AUTOMATION ENGINEERING  
SERVICES PVT LTD.**

(Power & Motion Control Solutions)

A- 103/2, Ground & 1st Floor,

Okhla Industrial Area Phase- II, New Delhi- 110020

Phone: +91-11-

26432375,26432851/52 Email: [info@alliedautomation.in](mailto:info@alliedautomation.in)

AAESPL//05/23/13409

Date: 27-05-2023

M/s Jindal Aluminium Limited

SP-2/333, Ricco Industrial

Area, Bhiwadi Pincode-301019, Rajasthan India

Subject : **BEST OFFER**

Dear Sir,

With reference to your requirement, we are pleased to submit our best offer which is as under:

**CHECK LIST**

DISCOUNT : ~~Below~~ below price are find

PRICE BASIS : FOR BHIWADI FOR Bhiwadi

P & F : INCL. — / EXTRA Nil

GST/IGST : 18% Extra

DELIVERY : Ready stock

PAYMENT : 15 - days

WARRANTY : 12 - month warranty

# Description

1 Model:- WATER PUMP  
Size-200mm x 150mm, Pump Input-60hp-1440tpm-IE2  
HEAD-40MTRS, DISCHARGE-300M3/HR  
MAKE -KIRLOSKAR  
READY IN STOCK

2 Model: MONO BLOCK PUMP  
SIZE-100 X 100 , HEAD 31 MTR, FLOW-40LPS,  
MOTOR-15HP, RPM-2880  
MAKE-KIRLOSKAR  
READY IN STOCK

3 Model:- MONO BLOCK PUMP  
SIZE-100 X 100 MM  
7.5HP, HEAD 22 MTR, DIS-14.52 LPS  
MAKE-KIRLOSKAR ✓  
Delivery: READY IN STOCK

OR Model:- MONO BLOCK PUMP  
SIZE-100 X 100 MM  
10 HP, HEAD 24 MTR, DIS-21.5 LPS  
MAKE-KIRLOSKAR  
Delivery: READY IN STOCK

Qty	Unit Price	Discounted	Total Discounted
			(Rs.)

2 265050 ✓ 530100

1 58070 ✓ 58070

1 35867 ✓ 35867

1 44027 ✓ 44027

QUOTATION FOR WILO MAKE PUMPS



Customer Name	Jindal Aluminium Pvt Ltd
Project Name	
Inquiry Ref.	ITC/PUMP/00262
Date	24-04-2023

Kind Attn : Mr.Rajgopal ji

Dear Sir,

We refer to enquiry and take pleasure in confirming below our final proposal for the same.

Sr. No.	1	2	3	4
Description	Water Pump Set	Water Pump Set	Water Pump Set	Water Pump Set
Type of Pump	Monoblock pump	Monoblock pump	Monoblock pump	Monoblock pump
Qty	3	2	1	1
Liquid Handled	water	water	water	water
Specific Gravity	1	1	1	1
Liquid temp (°C)	Ambient	Ambient	Ambient	Ambient
PUMP MODEL	MPM716	MPM1020	MPM1527	MPM1527L
No of Stages	1	1	1	1
Speed (rpm)	2900	2900	2900	2900
Capacity (LPM)	(1320-800)	(1465-700)	(1700-1000)	(2250-1200)
Total Dynamic Head-m	(17-24) Meter	(21-33) Meter	(27-38) Meter	(17-30) Meter
Recommended (KW)	5.50	7.50	11.00	11.00
Suction x Delivery (mm)	100x75	100x75	100x75	100x75
Shaft Sealing	Mechanical Seal	Mechanical Seal	Mechanical Seal	Mechanical Seal
Material of Construction				
Casing	CI	CI	CI	CI
Impeller	CI	CI	CI	CI
Shaft	SS	SS	SS	SS
MOTOR DETAILS				
Make	WILO	WILO	WILO	WILO
Rating ( Kw/HP)	5.5Kw/ 7.5 HP ✓	7.5Kw/10HP ✓	11Kw/15HP ✓	11Kw/15HP ✓
Pole	2 Pole	2 Pole	2 Pole	2 Pole
Scope of Supply	Pump-Set	Pump-Set	Pump-Set	Pump-Set

COMMERCIAL OFFER	1	2	3	4
Unit Pump set Price in INR	38000	47000	56000.00	56000.00
Total Price in INR	114000.00	94000.00	56000.00	56000.00
Ex. Kolhapur / Pune				

Terms and conditions :

1. Payment - 50% Advance & 50% against PI.
2. GST and Freight extra as applicable during dispatch.
3. Within 8-10 Weeks after confirmation of your PO
4. Warranty: 12 months from the date Commissioning or 18 months from the date of dispatch whichever is earlier.
5. Specific gravity of the liquid is assumed to be 1

Thanking you,  
Balbir Saini

CHECK LIST

DISCOUNT : ..above Price are final

PRICE BASIS : FOR BHIWADI... For JAL

P & F : INCL...../ EXTRA... Nil

GST/IGST : ...18% GST Extra

DELIVERY : ...8 to 10 week

PAYMENT : ...within 15 days

GCW/C/C : ...12 month warranty

VALIDITY : .....

CHECKED BY : Rupesh

Commercial Offer **wilo**

Date 02-05-2023  
 Project Water Pump-Set  
 Offer Ref WMP/GI/JP/23-24/092  
 Client Name Jindal Aluminium

Kind Atten:  
 We thank you for your enquiry and we are pleased to submit our commercial offer

PRICE SCHEDULE									
Sr No	Application	Pump Model	Stages	MOC (Casing/Impeller/Neck ring/Shaft/Sleeve)	Motor	Qty	Ex- Works Each Pumpset	Ex- Works G. Total (Taxes extra)	
1	Cooling Tower Pump-Set	SCP 150-390 HA	Single	CJ/CF8M/CF8M/SS 410/SS 410	CGL IE2/45 Kw/4P/415V/50 HZ	2	4,76,970	9,53,939	
Grand Total Ex Works								9,53,939	

410000

**Terms & Conditions:**

- Price : Ex works, Pune
- GST & Freight : Extra@ actual at the time of Supply.
- Delivery : 14-16 Weeks from the date of technically and commercially clear the order.
- Warranty : 18 months from the date of supply or 12 months from the date of commissioning whichever is earlier.

WIL0 Pumps  
 Pune-Mumbai Road, Chinchwad, Pune 411019  
 Maharashtra, India.

Final Price  
 Approved  
 31/5/23

CHECK LIST

DISCOUNT : above price are final

PRICE BASIS : FOR BHIWADI For J.A.

P & F : INCL...../EXTRA..... Nil

GST/TOST : 18% GST Extra

DELIVERY : 8 to 10 weeks

PAYMENT : Within 15 days

GC/WC/TC : 12 month warranty

VALIDITY : \_\_\_\_\_

CHECKED BY : Rupesh

Pioneering for You

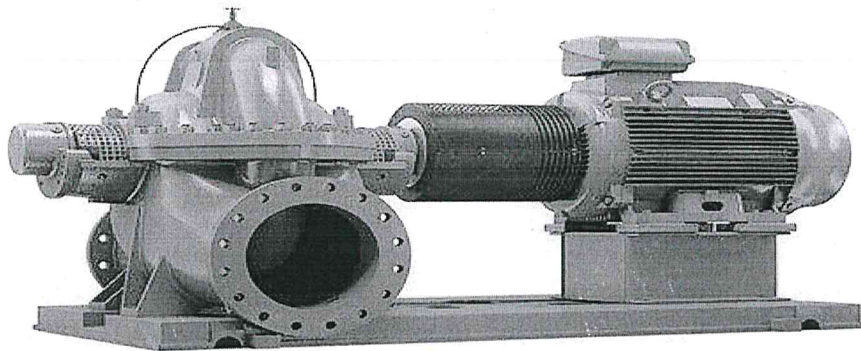
**wilo**

**Mather+Platt**  
A WILCO BRAND

## WILO Mather and Platt Pumps Pvt. Ltd.

### Techno-Commercial Offer

General Industry



<b>PROJECT</b>	Cooling Tower Pumps
<b>CLIENT</b>	Jindal Aluminium Ltd
<b>END CLIENT</b>	Jindal Aluminium Ltd
<b>OFFER REFERENCE</b>	WMP/GI/JP/23-24/092

**WILO Mather and Platt Pumps Pvt. Ltd.**

Ground Floor, "Elpro Vision Exchange",  
Elpro Compound, CTS No.4270,  
Chinchwad, Pune - 411033.  
T +91 20 67347100  
F +91 20 67347112  
[www.matherplatt.com](http://www.matherplatt.com)  
Toll free: 1-800-266-8866



Client	Jindal Aluminium Ltd
End Client	Jindal Aluminium Ltd
Project	Cooling Tower Pump-Set
Offer Ref	WMP/GI/JP/23-24/092
Date	02-05-2023

Sr. No.	Description		Cooling Tower Pump-Set
1	Tag No	-	NA
2	Qty	No	1
3	APPLICATION	-	Water Pump-Set
4	LIQUID	-	Clear Water
5	SP GRAVITY	-	1
6	TEMPRATURE IN DEG C	Deg C	Upto 90 degree C
7	VISCOSITY IN CST	Centipoise	1
9	ANY SOLID CONTENTS	PPM	Nil
10	SOLID SIZE IN MM	MM	Nil
<b>PERFORMANCE PARAMETERS</b>			
11	PUMP TYPE	-	Split Case Pump set
12	RATED CAPACITY ( M3/HR)	M3/Hr.	300 m3/h
13	TOTAL DYNAMIC HEAD	M	40m
14	PUMP MODEL		SCP 150-390 HA
15	SPEED	RPM	1475
16	EFFICIENCY	%	82.75
17	PUMP INPUT	Kw	39.49
18	RECOMM. KW	Kw	45 KW
19	NPSHR	Mtr.	3.36
20	SHUT OFF HEAD	Mtr.	44
21	APPROX. IMPELLER DIA - RATED	MM	358
22	NO. OF STAGES	-	Single
23	SUCTION X DELIVERY SIZE	MM	200 X 150
24	RECOMM. PIPE SIZE	MM	250 X 150
25	TYPE OF SEALING	-	Gland Pack
<b>MATERIAL OF CONSTRUCTION</b>			
25	CASING	-	CI
26	IMPELLER	-	CF8M
27	CASING NECK RING	-	CF8M
28	PUMP SHAFT	-	SS 410
29	PUMP SLEEVE	-	SS 410
30	FLRXIBLE COUPLING	-	CAST IRON
31	COUPLING MAKE	-	RATHI/EQUIV
32	COUPLING TYPE	-	SPACER TYPE
33	GLAND PACKING	-	GRAPHITE COTTON
34	REMAINING PARTS	-	AS PER M & P STD
<b>TESTING</b>			
33	PERFORMANCE TESTING	-	IS 9906 Gr II
34	Hydro TESTING	-	HIS
35	IMPELLER BALANCING	-	ISO 1940 GR 6.3
<b>DRIVER DETAILS</b>			
36	MOTOR/ENGINE	-	Motor
37	MAKE	-	CGL/Equiv.
38	EFF CLASS	-	IE2
39	FREQUECY	Hz	50HZ+/-5%
40	CLASSES OF INSULATION/ DEGREE OF PROTECTION		IP55
41	VOLTAGE	V	415+/-10%
42	TYPE OF MOTOR/ENGINE	LT/HT	LT
43	RATING	KW	45 KW
44	SPEED	RPM	1470
45	POLE	-	4
46	MOUNTING	-	Foot Mounted
<b>SUPPLY</b>			
47	SCOPE OF SUPPLY		Pump with gland pack + Base Frame + Coupling + Coupling Guard + Electric Motor + Foundation bolts.

**Terms & Conditions:**

- 1) F.O.R : Our Ex works Only.
- 2) GST & Freight extra as applicable at the time of supply.
- 3) Delivery : 14-16 weeks after technically and commercially clear the order.
- 4) Warranty : 18 Months from the date of supply or 12 Month from the date of comissioning whicheverone is earlier.



