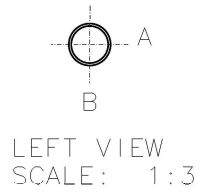
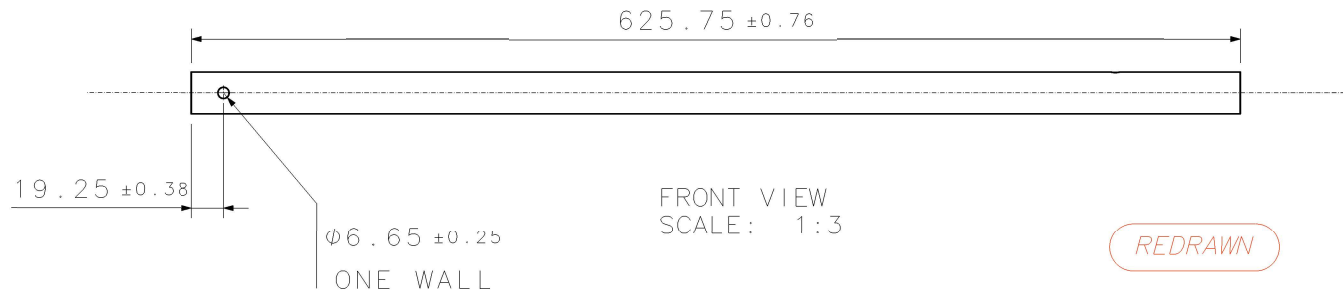
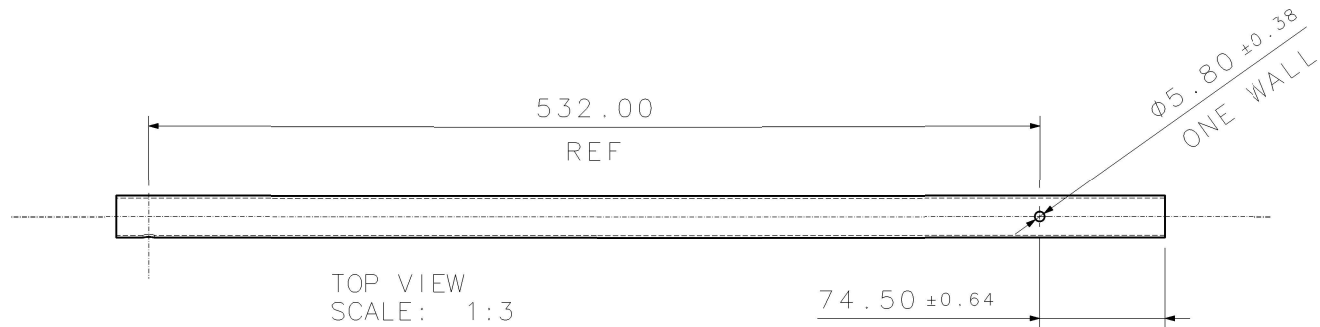


NOTES:

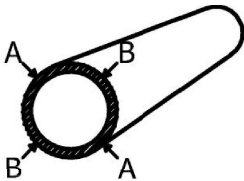
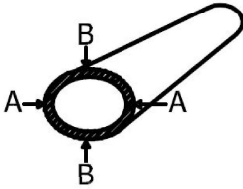
1. ALL MATERIALS MUST COMPLY WITH ES100118
2. MATERIAL: AL6063-T5
3. CUT MATERIAL MUST BE FREE OF BURS
4. FINISH: SILVER ANODISE
5. TO BE FREE FROM ALL BURRS & SHARP EDGES
6. THIS DRAWING IS BASED ON ONE OR MORE REFERENCE



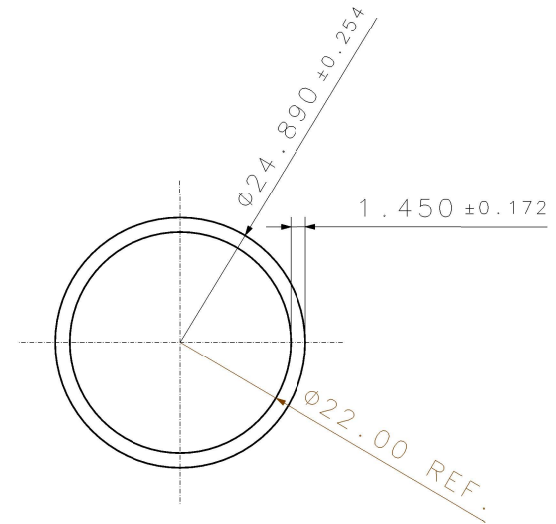
GENERATED FROM: 3D	THIRD ANGLE PROJECTION 	TOL UNLESS SPECIFIED	DOC NO: N892625-C2D1
		0 & 1 PLC DEC: \pm N/A	
2 PLC DEC: \pm N/A	TITLE: LOWER POLE CST92		
ANGLES: \pm N/A	REVISION: *** VER/ITER: ***		
ALL DIMENSIONS mm		SIZE: A3	CHANGE: CN0339380
		REF SCALE: 1:1	***
		SHEET: 1 OF 2	FOR PART DATA REFER TO PART DETAILS REPORT

TABLE 12.2 Diameter-Round tube

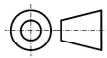
Tolerance - mm. plus and minus

SPECIFIED DIAMETER (mm)	ALLOWABLE DEVIATION OF MEAN DIAMETER FROM SPECIFIED DIAMETER (Size)  Difference between 1/2 (AA+BB) and specified diameter	ALLOWABLE DEVIATION OF DIAMETER AT ANY POINT FROM SPECIFIED DIAMETER  Difference between AA or BB and specified diameter
	COL. 1	COL. 2
12.7-25.37	0.254	0.508
25.4-50.77	0.304	0.635
50.8-101.57	0.381	0.762

TOLERANCE STANDARD
STRAIGHTNESS: 1mm / m



FRONT VIEW
SCALE: 2:1

GENERATED FROM: 3D	THIRD ANGLE PROJECTION 	TOL UNLESS SPECIFIED 0 & 1 PLC DEC: ± N/A 2 PLC DEC: ± N/A ANGLES: ± N/A	DOC NO: N892625-C2D1
		ALL DIMENSIONS mm SIZE: A3 REF SCALE: 1:1 SHEET: 2 OF 2	TITLE: LOWER POLE CST92. TYPE 03 REVISION: *** VER/ITER: *** CHANGE: CN0339380 ***

FOR PART DATA REFER TO PART DETAILS REPORT