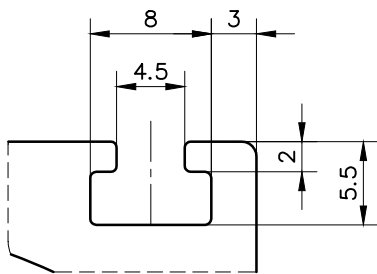
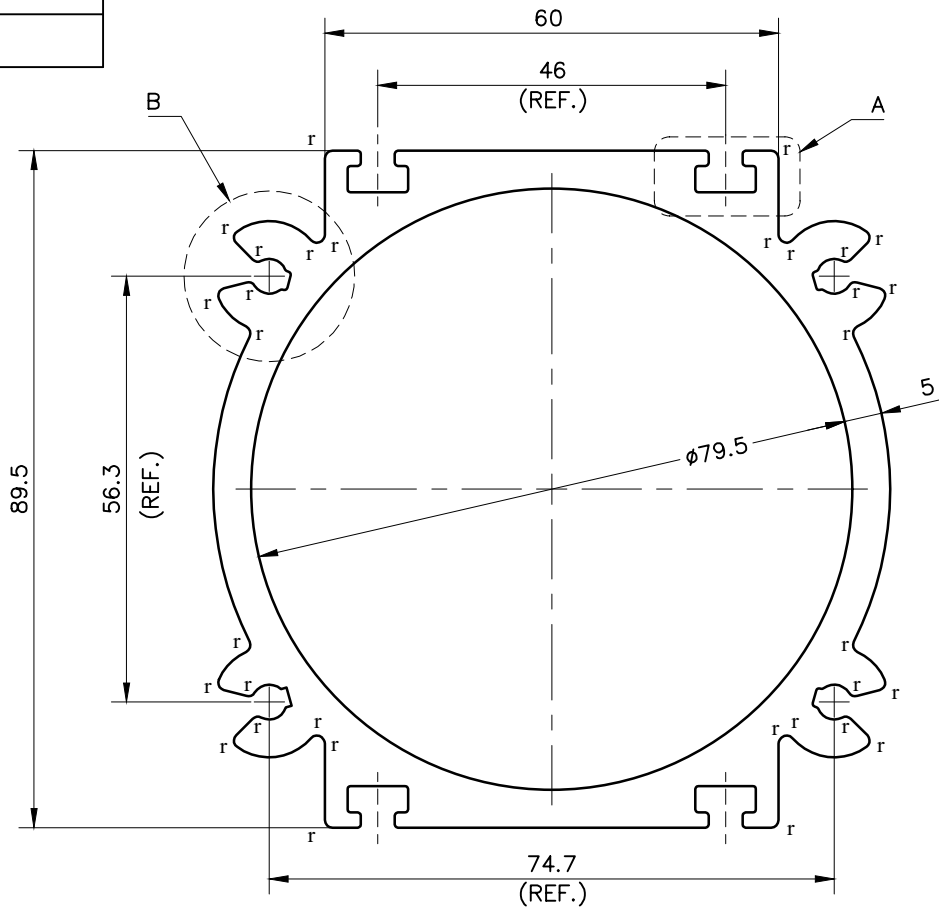
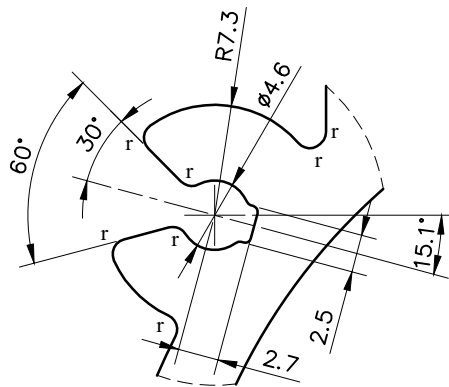


BEFORE APPROVAL CHECK ALL DIMENSIONS PROPERLY



DETAIL A
SCALE 2:1



DETAIL B
SCALE 2:1

NOTE:-
r = 1.0RADIUS (32 PLACES)

1. STRAIGHTNESS= 1.7mm/M
2. TWIST= 1.7mm/M
3. ANGULARITY= $\pm 2^\circ$
4. FLATNESS= 0.007xWIDTH

UNCONTROLLED COPY

1) THE WELDING LINE IN THE EXPOSED SURFACE OF PROFILE IS UNAVOIDABLE. 2) PLEASE SPECIFY IMPORTANT SIZES. 3) PLEASE SPECIFY IF THIS PROFILE MATCHES WITH OTHER PROFILES. 4) PLEASE SPECIFY EXPOSED SURFACE. OTHER WISE CONSIDERED AS NO EXPOSED SURFACE. 5) FINISH :- MILL FINISH / ANODIZING / POWDER COATING



SYMBOL OF QUALITY
AN ISO 9001 COMPANY

JINDAL ALUMINIUM LTD.
BHIWADI-301019 (INDIA)

	NAME	DATE
DRAWN	ASHUTOSH	13-04-2023
CHECKED		
APPROVED		
SCALE		1:1
AREA mm ²		1901.69
PERIMETER mm.		489.0563
WEIGHT kg/m		5.135
DRAWING No.		SECTION No.

1. ALL DIMENSIONS ARE IN mm.
2. ROUND OFF ALL SHARP CORNERS WITH 0.40 mm.
3. TOLERANCES WILL BE AS PER BS:EN-755-9 , UNLESS OTHERWISE SPECIFIED

PARTY'S NAME	M/s. KNORR-BREMSE INDIA PVT. LTD.
PARTY'S DRAWING No.	AS PER DRAWING -M 62965 001 (Q00532)
ALLOY & TEMPER	6063 T6
DESCRIPTION	MOTOR BODY