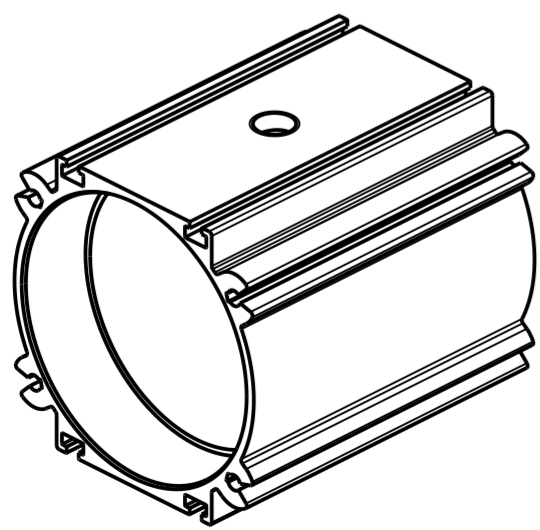
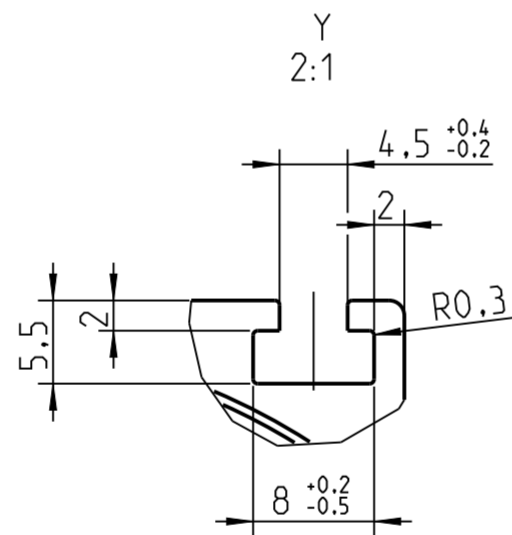
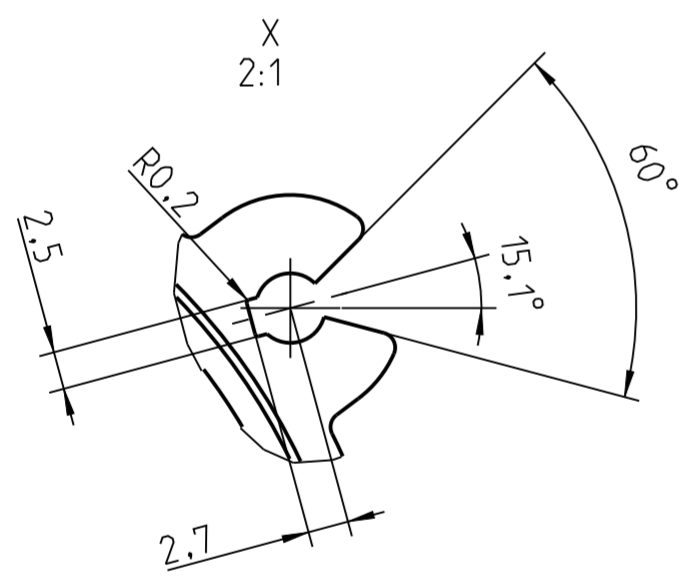
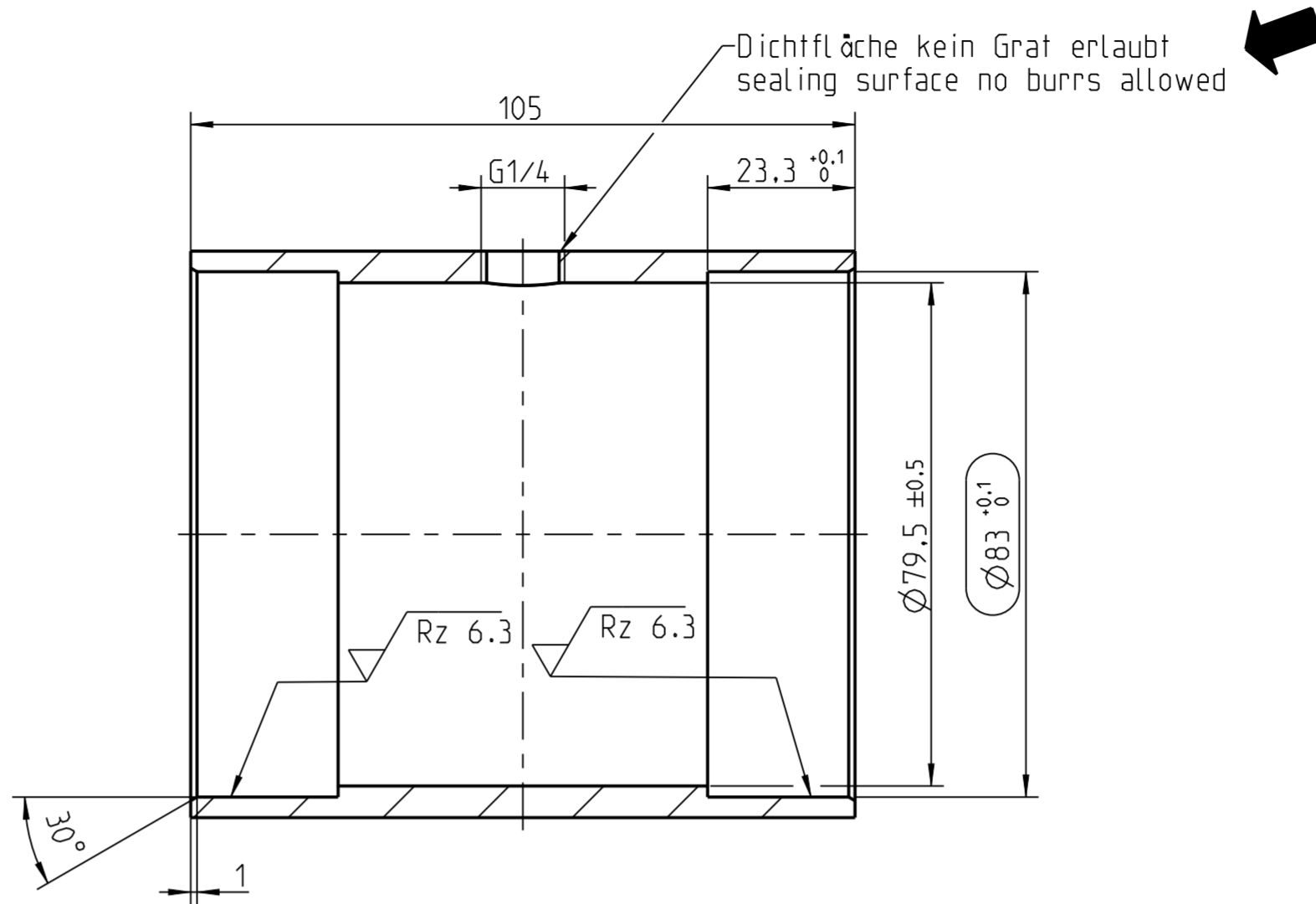
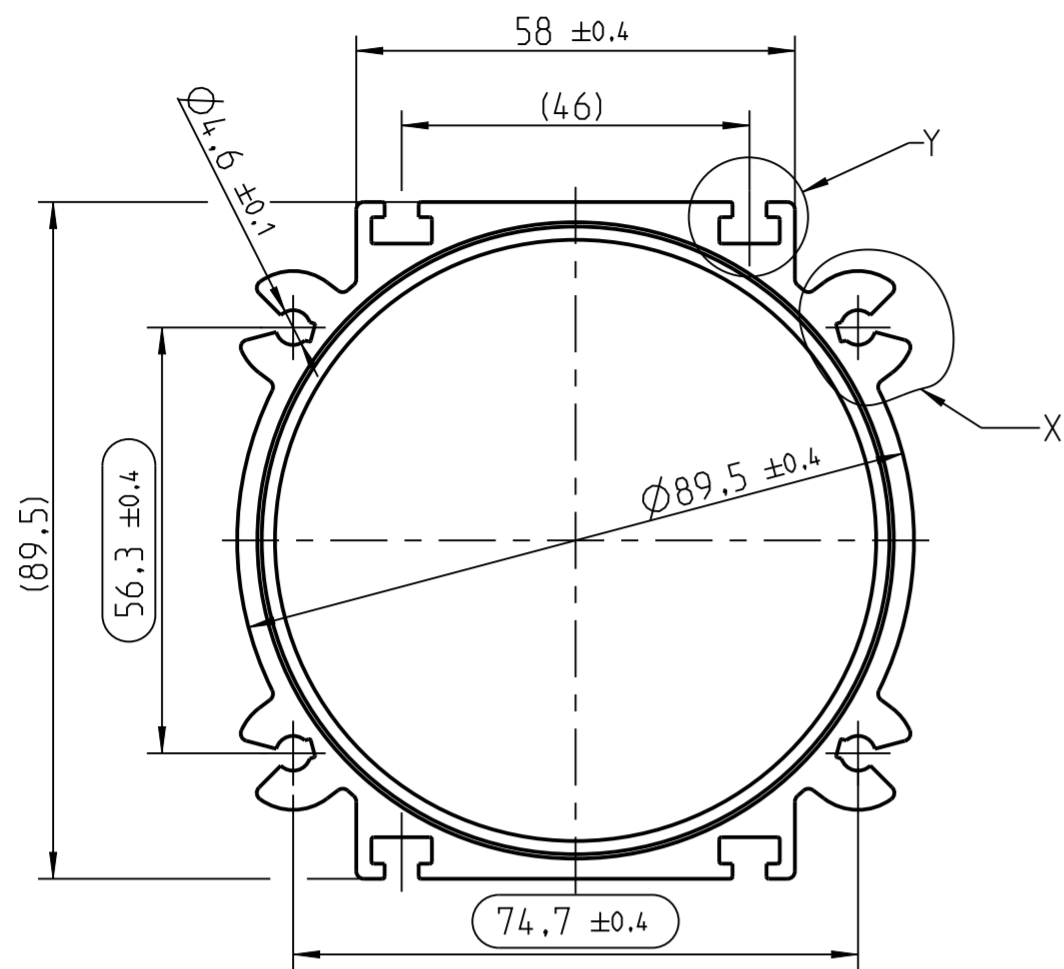


The reproduction, distribution and utilization of this document as well as the communication of its contents to others without express authorization is prohibited. Offenders will be held liable for the payment of damages. All rights reserved in the event of the grant of a patent, utility model or design.



1:2

Gehäuse muss Anodisiert werden
Schichtstärke min. 10 bis 12 µm
Farbe: Transparent
housing must be anodized
layer thickness min. 10 to 12 µm
colour: transparent

Werkstückkanten
part edges
DIN ISO 13715

✓ (√ Rz 6.3)

Alle nicht benannten Radien 1 mm
all not defined radii 1 mm

KNORR BREMSE INDIA PVT LTD	
S.No	15416
Date	12-04-2023
Vendor	Jindal
Issued By	Praveen Tomar
Authorised By	Gama Gupta

Art. 62965		ISO 2768-mK	A2	N
		ISO 13920-Bf		
		DIN 16901-150	EN AW 6060 T66	
		DIN 7715-5-P1	DIN EN 573-2	
		ISO 3302-1-M3.E2.EN2		
		Size ISO 14405-1 (E)		
F	103171-198	MN	2018-11-09	
D	103171-171	DANS	2017-09-07	
C	103171-168	M.Nych	2017-08-28	
B	103043-1	RIM	2013-09-09	
A	102292-1	M.Nych	2012-03-30	
Index	Modif.	Name	Date	
Scale	1:1	Drawn	12-03-12	M.Nych
	Checked	12-03-12	M.Autzen	
	Released	12-03-12	M.Nych	
	Date	Name	Housing	
de/en		mm	V1.4 Pinch valve	
EVAC TRAIN		Gehäuse		
		V1.4 Quetschventil		
M 62965 001			Sheet	1 / 1