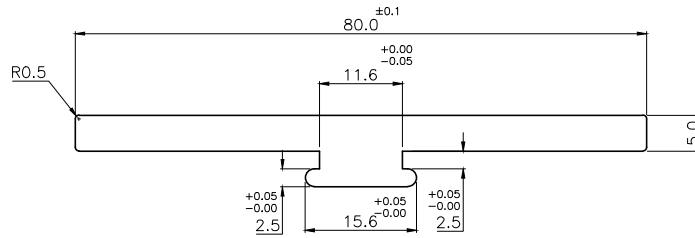
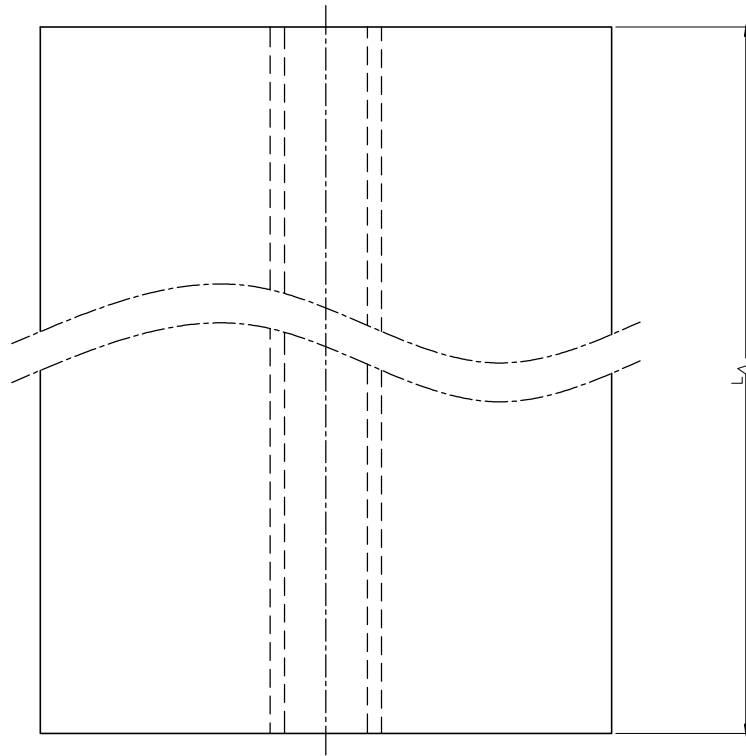


REVISIONS

REV. NO.	REVISION DESCRIPTION	REV. DATE



STEP : 01

OPERATION : EXTRUSION

KARAM®

P.N. INTERNATIONAL PVT. LTD.

C-12 AMAUSI INDUSTRIAL AREA, NADAR GANJ, LUCKNOW

2024	NAME	SIGN	DATE	TITLE: UPPER PLATE		
DGN	BRIJESH		08.04.24			
DRN	AJAY		08.04.24	MATERIAL: AL.6005'T5'	TYPE: EXTRUDED COMPONENT	
CHD1	PRAVIN		08.04.24		DRG NO. EXAL147	SCALE
CHD2	AMIT		08.04.24		REF. NO. SA-51A(CL)(E)(04.2)	1 : 1
APPR	ANANT		08.04.24			



ALL DIMENSIONS ARE IN mm

Unspecified tolerance as per IS 2102:1980 (Medium grade)

REV. NO.
00