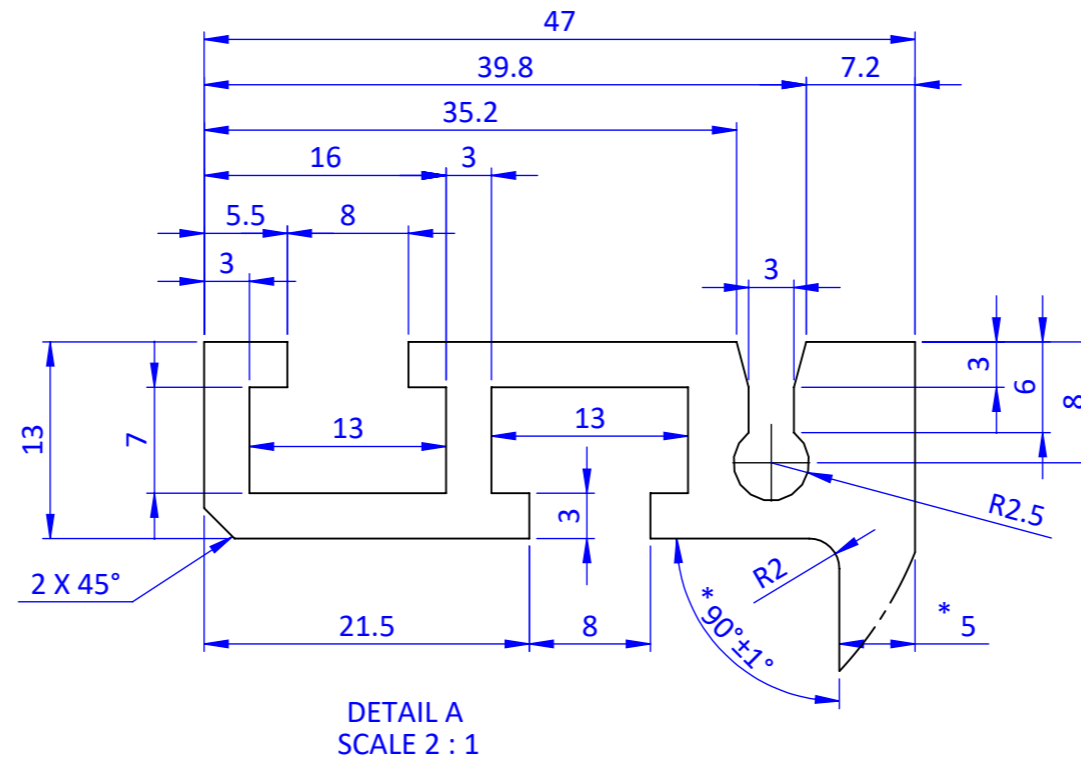
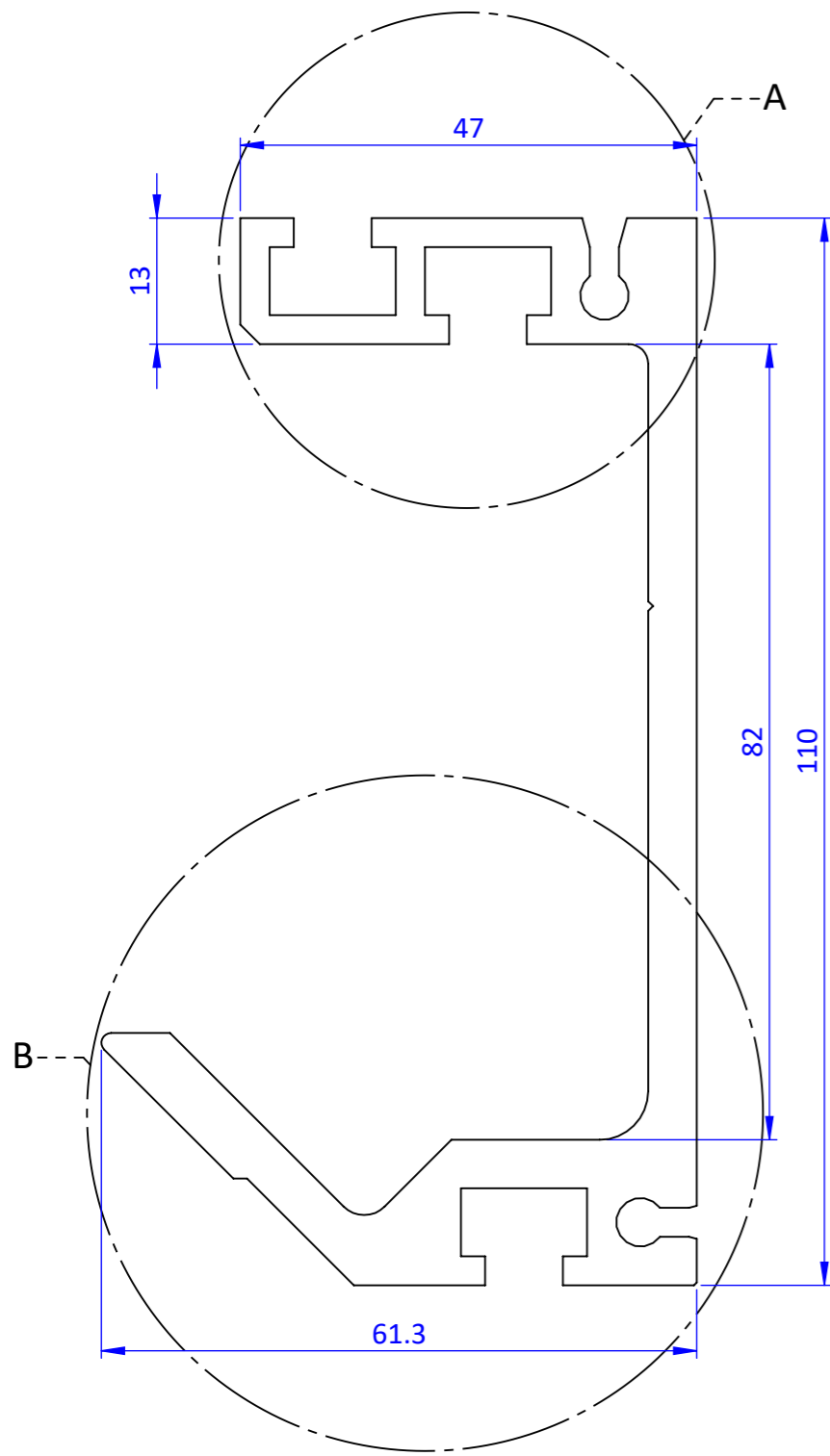
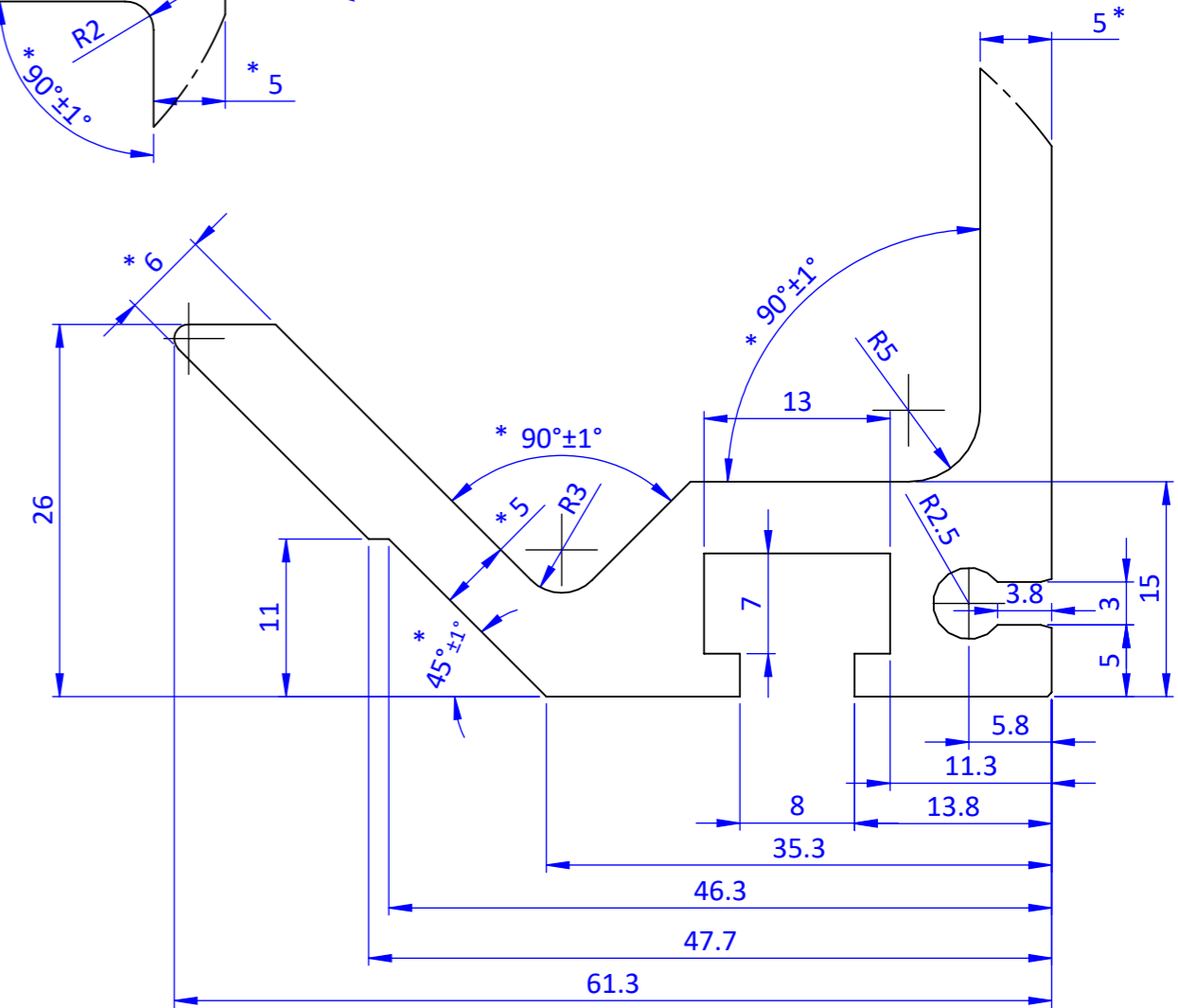


Q00061



DETAIL A
SCALE 2 : 1



DETAIL B
SCALE 2 : 1

NOTES :-

1. '*' MARK DIM. ARE CRITICAL TO QUALITY.
2. TOLERANCE CLASS AS PER BS EN 755-9:2008, UNLESS OTHERWISE SPECIFIED.
3. OVERALL MATERIAL THICKNESS IS 5MM UNLESS OTHERWISE SPECIFIED.
4. MATERIAL : ALUMINIUM 6063 - T6.
5. ANODISING FINISH : NATURAL.
6. ANODISING THICKNESS : AVERAGE = MINIMUM 20 MICRONS.
LOCAL = MINIMUM 16 MICRONS.

<p>Metaflex Doors India Pvt. Ltd. 8A, Part I & II, Udyog Vihar, Greater Noida (U.P.) 201306 Phone: +91-120-4751009 Fax: +91-120-4751026 www.metaflexdoors.in</p>		Tol. ±0.5	Drawn DEBADUTTA	Proj. MAK HEALTH Sheet 1 of 1 Format: A3
		NC-File N/A	Dr.date 25/08/09	
		SheetM. N/A	Chkd JAGS	
		Mat. Alluminium 6063 T-6	Ch.date 28/08/09	
		Finish ANODIZED 10 MICRONS	Dim. mm	
		Art.nr.	Scale 1:2	
This drawing contains confidential information and is the property of Metaflex Doors India Pvt. Ltd. without whose permission it may not be copied, shown or handed to a third party or otherwise used				
Dep. R&D	Config. Default	Title MAK HEALTH	Drwg No. ip000206-000	rev. 00