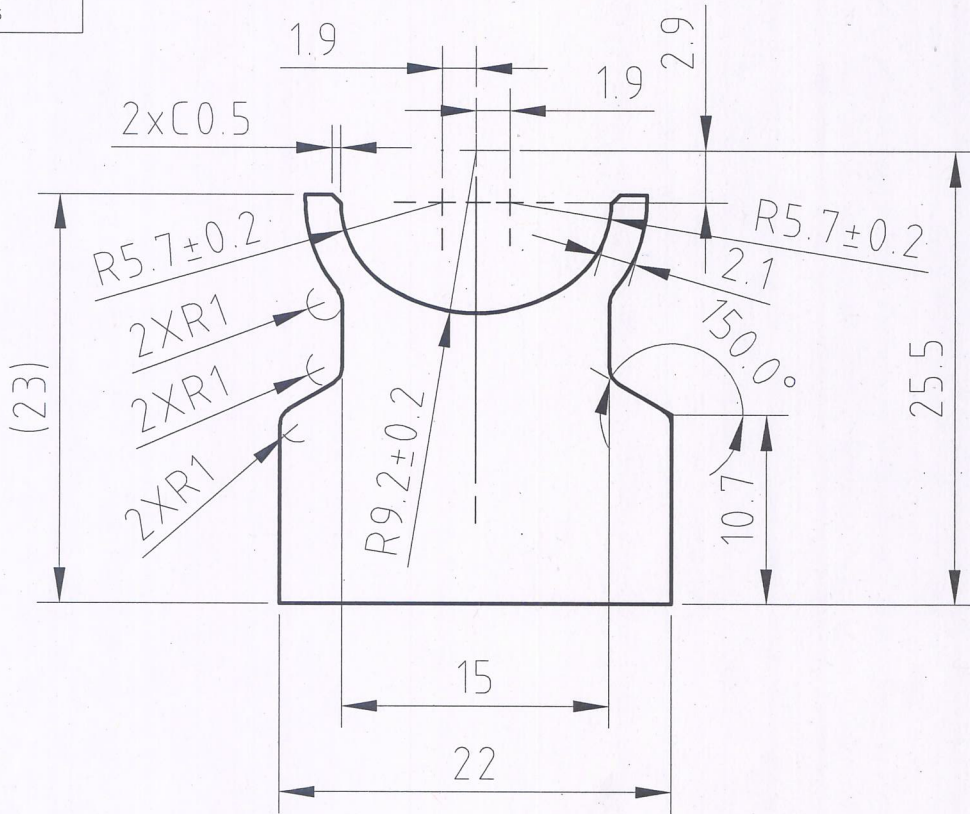


| CHAMFERING/RADIUS TOLERANCE |                       |
|-----------------------------|-----------------------|
| NOMINAL DIMENSION           | DIMENSIONAL TOLERANCE |
| NO ENTRY OR 0.1 OR LESS     | +0.4<br>0             |
| OVER 0.1 TO 0.2 INCL        | +0.4<br>-0.1          |
| OVER 0.2 TO 0.3 INCL        | +0.4<br>-0.2          |
| OVER 0.3 TO 0.4 INCL        | +0.4<br>-0.3          |
| OVER 0.4 TO 1.0 INCL        | ±0.4                  |
| OVER 1.                     | ±0.5                  |

Tolerance as per BS:EN-755-9 only.



NOTES:

1. NO CRACK VOID, BLISTER ALLOWED
2. ALL ENDS TO BE CONFIRM NO INCLUSIONS
3. END TO BE ETCHED TO CONFIRM NO INCLUSIONS OR CRACK

Area=362.20mm<sup>2</sup>

\* MATERIAL-  
DA3103S-H112, DDS8003-204

|                                      |               |                      |             |       |                          |                    |          |
|--------------------------------------|---------------|----------------------|-------------|-------|--------------------------|--------------------|----------|
|                                      |               |                      |             |       | DESIGNED BY:             | -                  | -        |
|                                      |               |                      |             |       | DRAWN BY:                | SUSHANT            | 06.04.24 |
|                                      |               |                      |             |       | CHECKED BY:              | <i>[Signature]</i> |          |
|                                      |               |                      |             |       | CHECKED BY:              | <i>[Signature]</i> |          |
|                                      |               |                      |             |       | APPROVED BY:             | <i>[Signature]</i> |          |
| REV. NO.                             | NO. OF PLACES | DESCRIPTIONS/ECN NO. | APPROVED BY | DATED | MATERIAL                 |                    |          |
|                                      |               |                      |             |       | *                        |                    | NTS      |
| PROFILE NO.- RM-EX-411               |               |                      |             |       | ALL DIMENSIONS ARE IN MM |                    |          |
| REF.DRG.NO.- 446252-6980 (MODEL-YED) |               |                      |             |       |                          |                    |          |
| HARDNESS                             |               | SURFACE TREATMENT    |             |       | DRAWING NO. :            |                    |          |
| -                                    |               | -                    |             |       | TC-EX-411                |                    |          |
| Global Autotech                      |               |                      |             |       | DESCRIPTION :            |                    |          |
|                                      |               |                      |             |       | TUBE CONNECTOR EXTRUSION |                    |          |