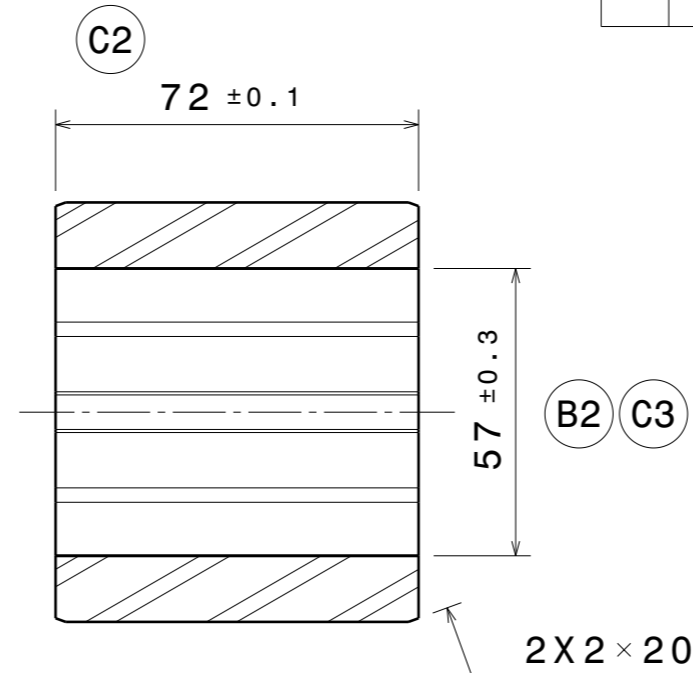
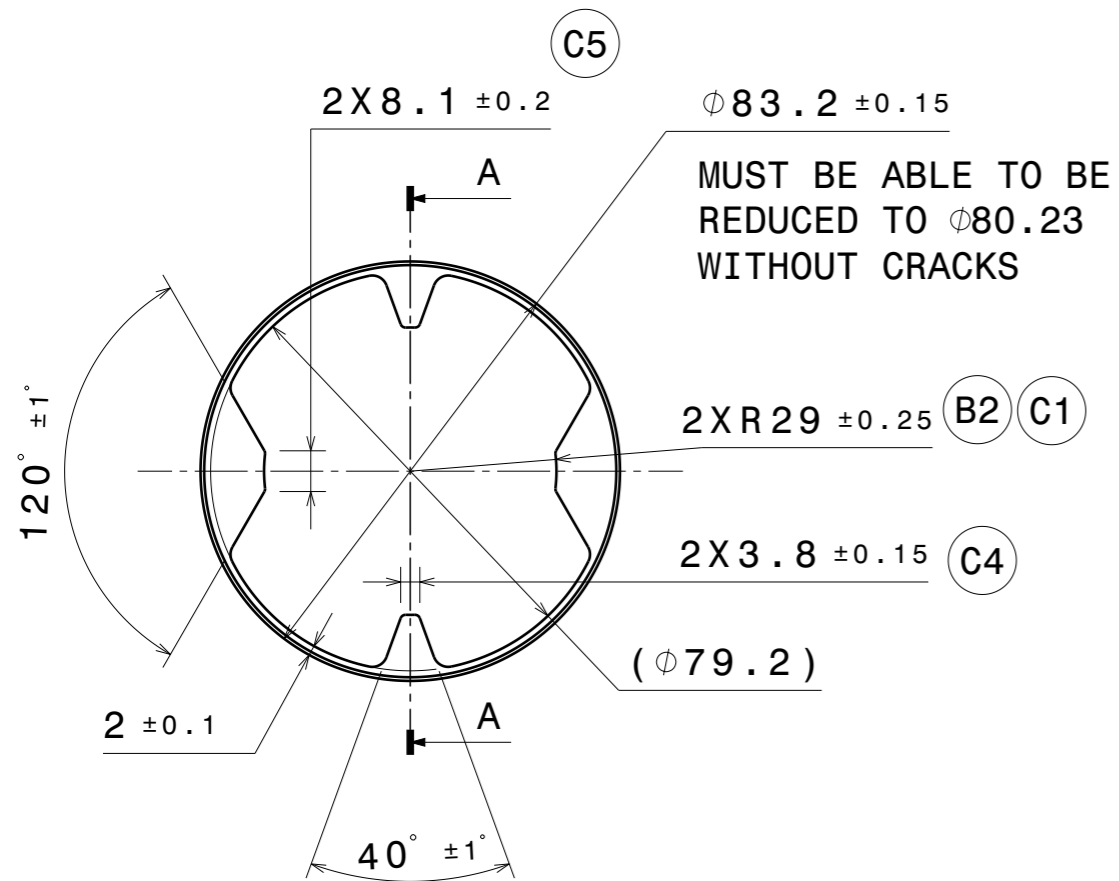
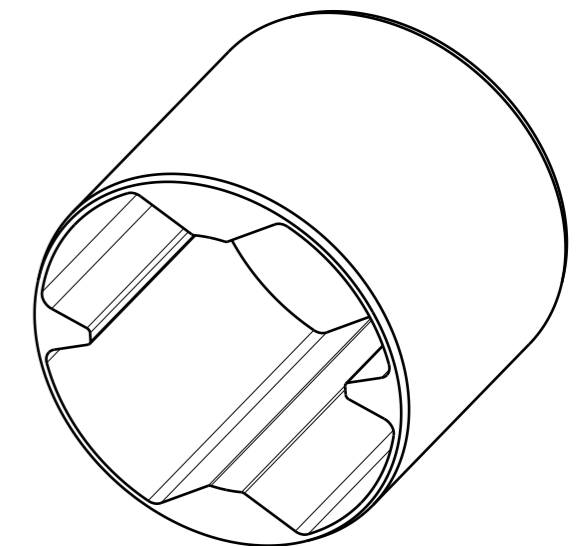


VER	PLS	DESCRIPTION	CHD BY	DATE	APD BY	ECR
A	-	INITIAL RELEASE				1078
B	1	1. FILLED VOIDS 2. WAS 3X R25.5 ±0.25 3. WAS 53 ±0.3	RPC	08FEB23	JV	1133
C	3	1. WAS 2X R25.5 ±0.25 2. WAS 60 ±0.1 3. WAS 53 ±0.3 4. WAS 2X 1.92 ±0.15 5. WAS 2X 7.1 ±0.2	RPC	24MAR23	JV	1176



Section view A-A




Isometric view

-0.2 EDGES acc.
DIN ISO 13715

MATERIAL: ALUMINUM 6063-T6

DELIVERY CONDITION:
SURFACES TO BE FREE OF GRAPHITE,
SILICONE COMPOUNDS, MOLYBDENUM
DISULPHIDE, SULFUR AND DIRT.

DRN.BY: R.CHURCH	18NOV22	PROPERTY OF ANP		 ANAND NVH PRODUCTS INC.
APD.BY: J.VANCE	18NOV22	THIS DRAWING IS THE SOLE PROPERTY OF ANP. IT CANNOT BE COPIED BY ANYONE WITHOUT WRITTEN PERMISSION OF ANP		
CAD SYSTEM: CATIA V5	PROTECTION MARK: ISO 16015	UNIT - MM		TITLE: OUTER PART
TOLERANCED: ISO 2768-mk ISO 8015	ISO 3302:M3 (RUBBER) DIN 16901 (PLASTIC)	SCALE - 1:1	MODEL IS MASTER FOR ALL NON-DIMENSIONED FEATURES	
MASS: 0.219kg	⊕ CALCULATED - ACTUAL	THIRD ANGLE PROJ	SHEET - A3	PART NO.: U-ET11606-D12 C
CUST REFERENCE NO. XXXXX		PRODUCTION REFERENCE NO. XXXXX		