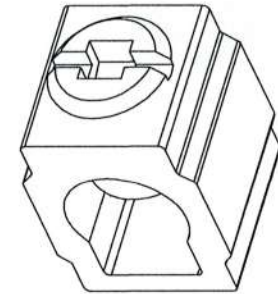
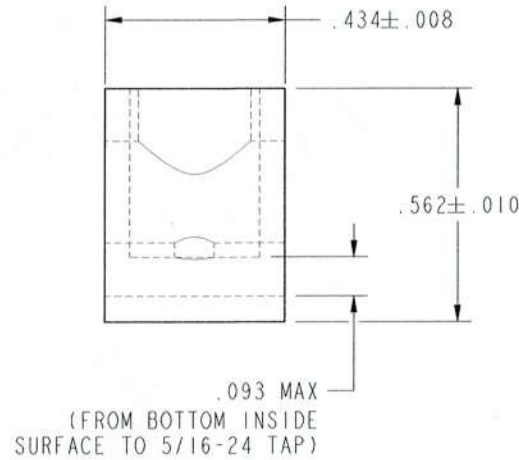
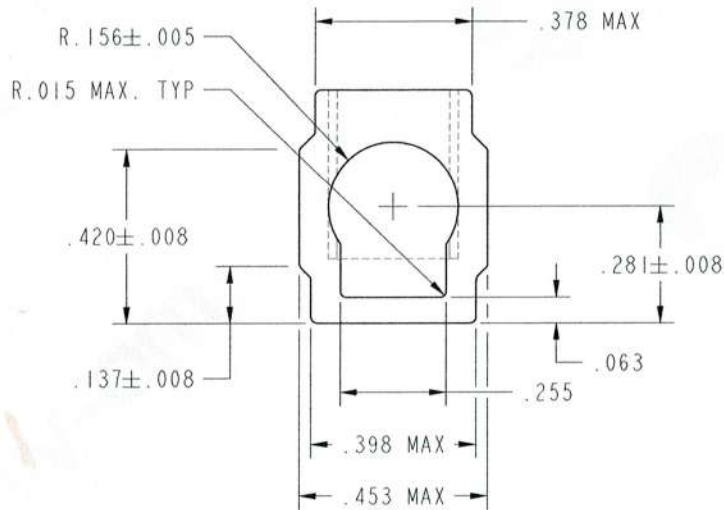
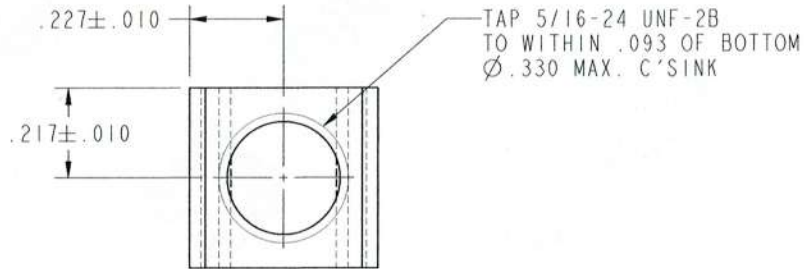


NOTES :

1. ALL RADII 0,031 MAX. EXCEPT AS NOTED.
2. PART MUST BE FREE OF BURRS.
3. WIRE RANGE 14 - 2 AWG CU/AL.
4. MARKING : VENDOR ID & PRODUCT ID, WIRE & TEMPERATURE RATING, UL & CSA LOGOS.
5. MAY BE PURCHASES FROM CMC PART NO. CA - 63 OR EQUIVALENT.
6. ASSEMBLE SET SCREW USING 5 - 10 LB - IN TORQUE TO KEEP SET SCREW FROM FALLING OUT DURING SHIPMENT.

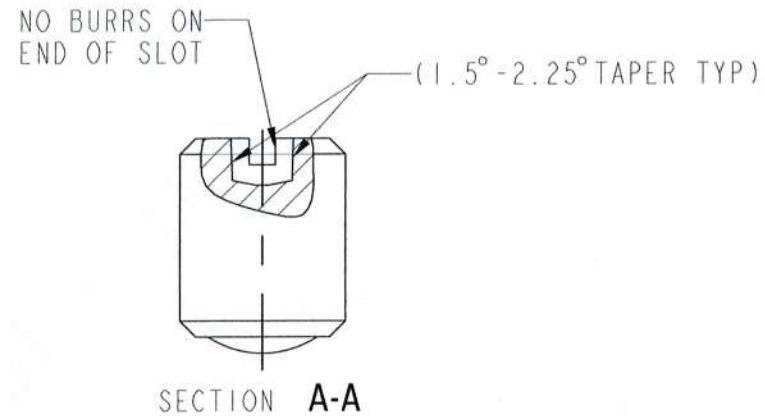
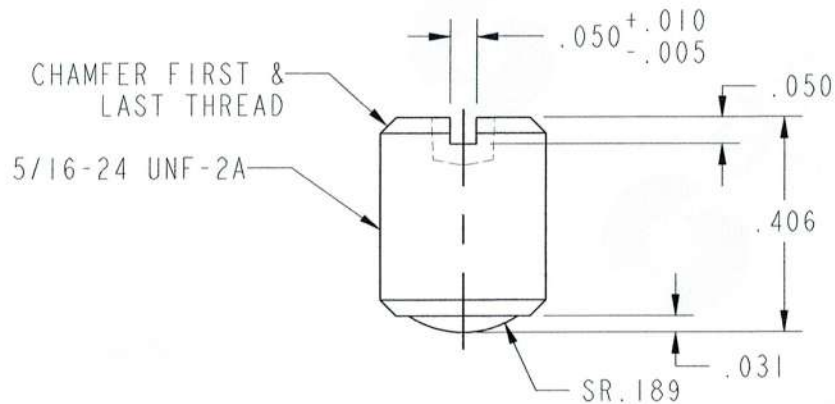
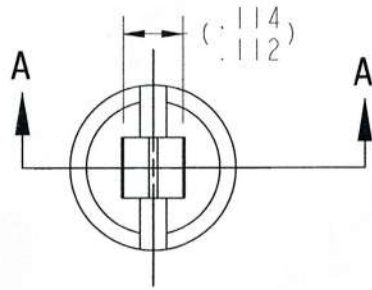


410399B00

TOLERANCES	
x,xx	± 0,01
x,xxx	± 0,005
ANGULAR	± 1,0°

<p>PROPERTY AND CONFIDENTIAL : THE INFORMATION CONTAINED IN THIS DRAWING IS THE SOLE PROPERTY OF SHIV-OM BRASS INDUSTRIES. ANY PRODUCTION IN PART OR AS A WHOLE WITHOUT THE WRITTEN PERMISSION IS PROHIBITED.</p>	DRW BY	H.V	05/05/2022	<i>Harshid</i>	MATERIAL:- ALUMINIUM ALLOY	REF :- AS PER CUSTOMER DRAWING
	CHE BY:	V.V / S.H	05/05/2022	<i>J.</i>	GRADE :- 6061-T6	
	APP BY:	Y.G / P.J	05/05/2022	<i>P.</i>	PLATING :- BRIGHT TIN PLATING	ALUMINIUM MECHANICAL LUG BODY
					GROSS WEIGHT:- 0.379 kg/100 pcs.	2-14 AWG WIRE RANGE
					FINISH WEIGHT:- 0.232 kg/100 pcs.	CUSTOMER DRG. NO.:- 410399 (REV. 04)
					GEN. TOL. :- AS PER TABLE	DRG. NO.:-
				SCALE :- NTS	SD-1365-SET	
				3rd ANGLE PROJECTION		
				All Dimensions Are In : INCHES		





TYPE III COMBINATION SET SCREW HEAD
 SLOTTED / SQUARE RECESSED (#2)
 0.082 / 0.096 (CHECK WITH #2 PENETRATION GAGE)

TOLERANCES	
x,xx	± 0,01
x,xxx	± 0,005
ANGULAR	± 1,0°

NOTES :

ALL DIMENSIONS ARE IN INCHES OTHERWISE WILL SPECIFIED.

REMOVE ALL BURRS & SHARP EDGES REQUIRED.

<p>PROPERTY AND CONFIDENTIAL : THE INFORMATION CONTAINED IN THIS DRAWING IS THE SOLE PROPERTY OF SHIV-OM BRASS INDUSTRIES. ANY PRODUCTION IN PART OR AS A WHOLE WITHOUT THE WRITTEN PERMISSION IS PROHIBITED.</p> 	DRW BY	H.V	05/05/2022	<i>Handwritten signature</i>	MATERIAL:- ALUMINIUM ALLOY
	CHE BY:	V.V / S.H	05/05/2022	<i>Handwritten signature</i>	GRADE :- 6269-T9
	APP BY:	Y.G / P.J	05/05/2022	<i>Handwritten signature</i>	PLATING :- BRIGHT TIN PLATING
					GROSS WEIGHT:- 0.252 kg/100 pcs.
					FINISH WEIGHT :- 0.112 kg/100 pcs.
					GEN. TOL. :- AS PER TABLE
					SCALE :- NTS
					 3rd ANGLE PROJECTION All Dimensions Are In : INCHES

REF :- AS PER CUSTOMER DRAWING

DESCRIPTION:-

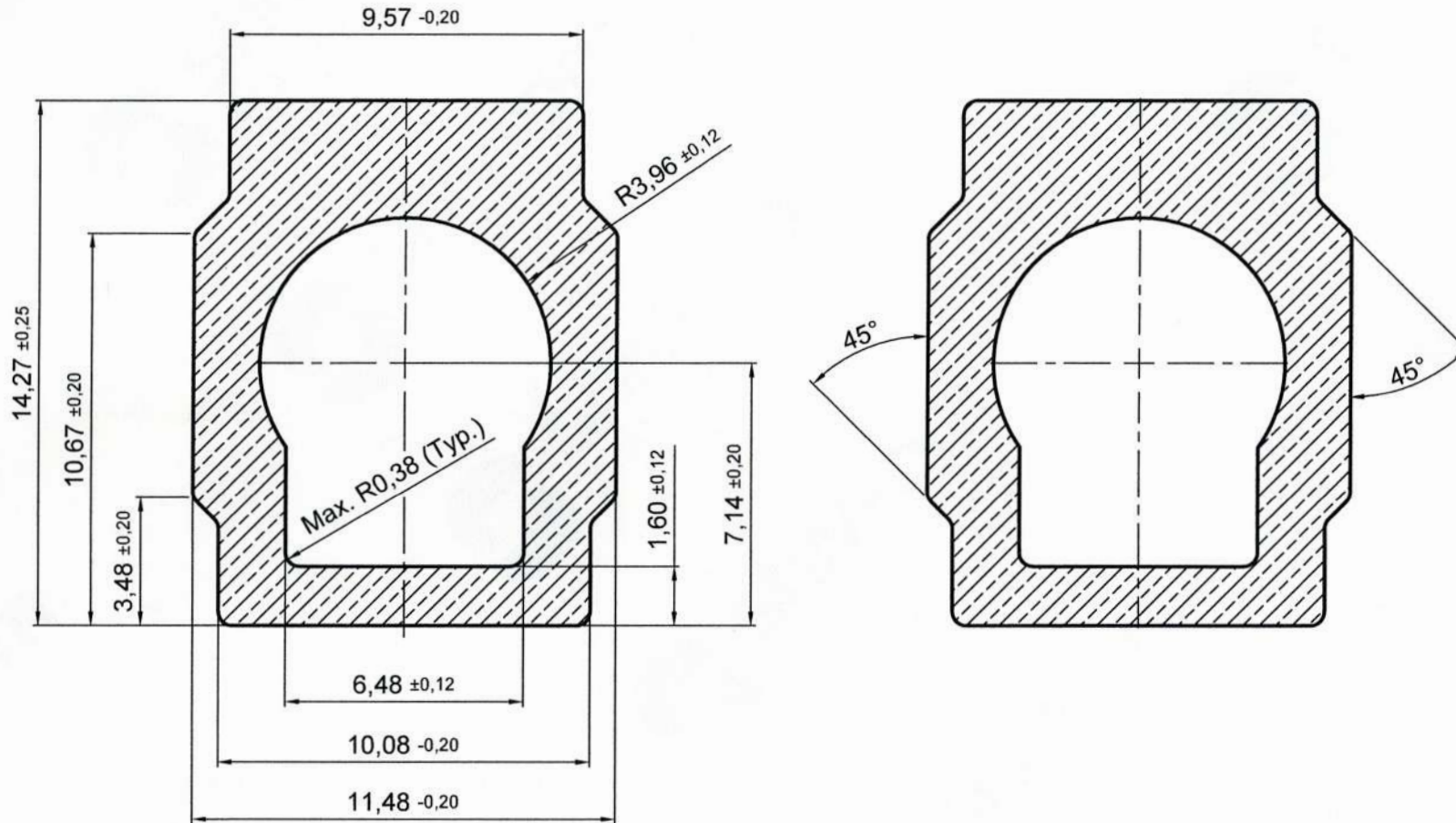
SET SCREW

CUSTOMER DRG. NO.:- 410399B00

DRG. NO.:-

SD-1365-01

Q00087



<p>PROPERTY AND CONFIDENTIAL : THE INFORMATION CONTAINED IN THIS DRAWING IS THE SOLE PROPERTY OF SHIV-OM BRASS INDUSTRIES. ANY PRODUCTION IN PART OR AS A WHOLE WITHOUT THE WRITTEN PERMISSION IS PROHIBITED.</p>	DRW BY:	S.B	05/05/2022	<i>[Signature]</i>	MATERIAL:- ALUMINUM ALLOY	REF :- AS PER CUSTOMER DRAWING
	CHE BY:	V.V / S.H	05/05/2022	<i>[Signature]</i>	GRADE :- 6061-T6	DESCRIPTION:-
	APP BY:	Y.G / P.J	05/05/2022	<i>[Signature]</i>	PLATING :-	ALU. SECTION
					GROSS WEIGHT:-	CUSTOMER DRG. NO.:- N.A.
					FINISH WEIGHT :-	DRG. NO.:-
				GEN. TOL. :- AS PER DRAWING	SD-1365-ROD	
				SCALE :- NTS		
				3rd ANGLE PROJECTION		
				All Dimensions Are In : mm		