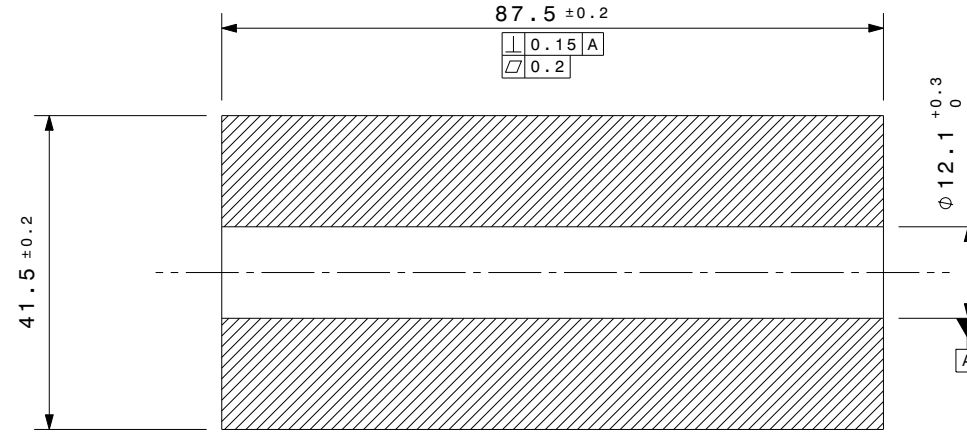
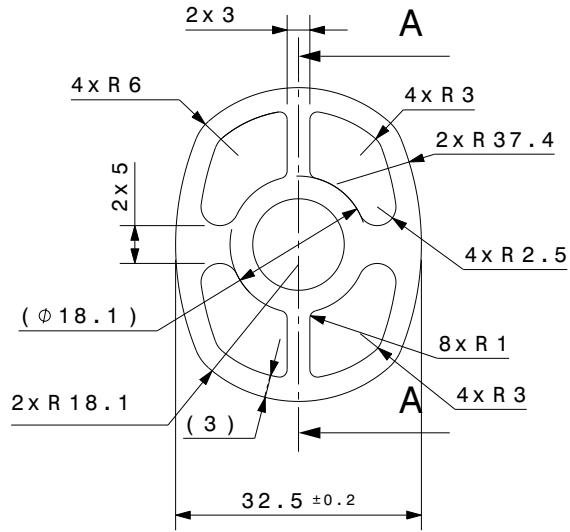


BILL OF MATERIAL

ITEM	QTY	PART NAME	PART NUMBER	MATERIAL SPEC.	MASS (Kg)	CSA (in ²)	TSA (in ²)
1	--	INNER	I-ST18203-D11	ALUMINIUM 6082-T6 / 6061-T6 ASTM B221-05A (EXTRUSION)	0.139kg	16.369in ²	46.297in ²

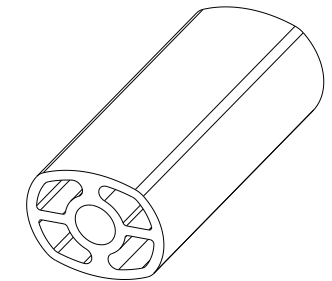
VERSION	PLACES	DESCRIPTION	CHANGED BY	DATE	APD. BY
A	---	INITIAL RELEASE	-----	30.08.2022	S.A.
B	---	RELEASE FOR DEVELOPMENT	MANISH	14.11.2022	S.A.
C	---	MACHINING SKETCH REMOVED	MANISH	25.11.2022	S.A.



Section view A-A

**FOR DEVELOPMENT
ONLY**

Issue Date : 25/11/22
Issued By : MANISH



Isometric view

NOTES

- * FOR UNSPECIFIED DIMENSION REFER 3D CAD DATA.
- * BUCKLING LOAD- 105 kN CHANGE IN LENGTH ≤0.2% SLEEVE HEIGHT.
- * REMOVE ALL SHARP EDGES AND BURRS.

<input type="checkbox"/> FOR QUOTATION	DRAWN BY MANISH KUMAR		PART NAME INNER	 ANAND NVH PRODUCTS (P) LTD N.H.-8 SECTOR 35 GURGAON HARYANA-122001 (INDIA) PROPERTY OF ANP
<input type="checkbox"/> FOR COSTING	CHECKED BY PANKAJ KASAR		PART NUMBER I-ST18203-D11	
<input checked="" type="checkbox"/> FOR DEVELOPMENT	APPROVED BY S.ADHIMMOOLAM			
<input type="checkbox"/> FOR SERIAL PRODUCTION	TOLERANCED: ISO 2768-mk ISO 8015		CAD SYSTEM: CATIA-V5	PROTECTION MARK: ISO 16016
	FOR WEIGHT SEE BOM	REGULATED DATE: 30.08.2022	MODEL IS MASTER FOR ALL NON-DIMENSIONED FEATURES	SHEET: A1 SCALE: NTS UNIT: mm REFERENCE PART NO: I-ST18203-D00