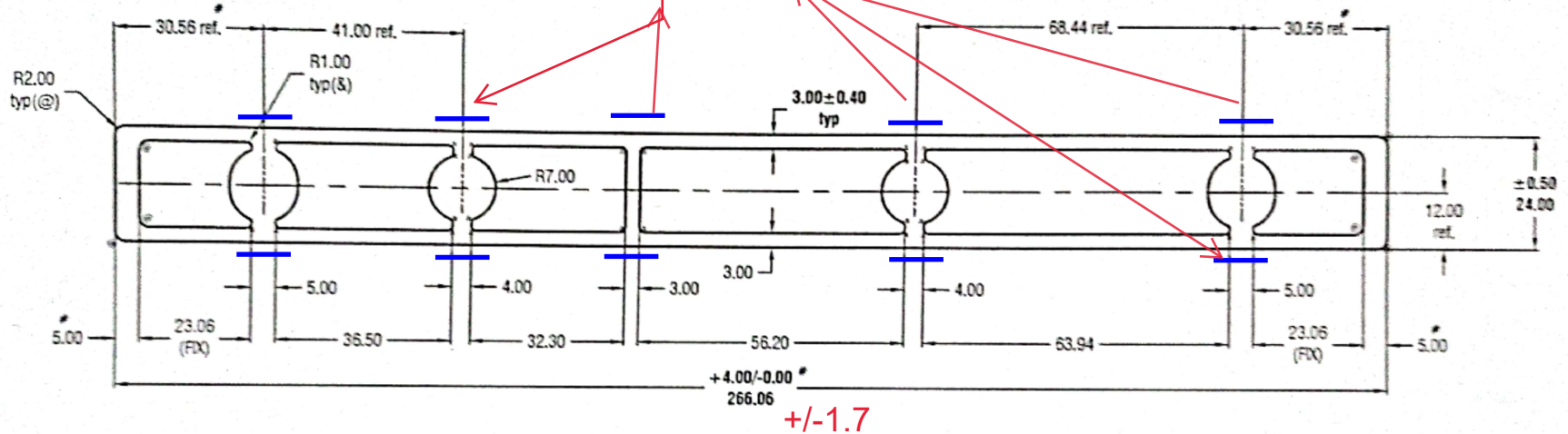


Due to thickness variation impression mark may be appear in theses marked places.



PRESS NO.	MIN. CONT.	DIE CATEGORY	ANGULARITY $\pm 2^\circ$	CUSTOMER'S APPROVAL	1 (#) SIZE & TOLERANCES REVISED AS PER CUSTOMER MAIL LETTER ON DT. 16.02.2024 (DEEPAK)							HINDALCO INDUSTRIES LIMITED FABRICATION - EXTRUSION & DIESHOP P.O. - RENIKOOT, DISTT - SONERHADRA, UP, INDIA FAX NO. 0091-5446-252107, 252427		
8	13.5"	H4	FLATNESS 0.007 MM/MM OF WIDTH		AREA (MM)	WT. (KG/M)	PERIMETER	FACTOR	CCD	ALLOY	SCALE	DATE	DRAWN	CHECKED
CUSTOMER'S NAME	-		TWIST 1.70 MM/M	END SEGMENT	2554.85	6.923	1281.96	204	267	6060-T6	1:1	12.01.2024	DEEPAK SINGH	M SHAVEER
EXCLUSIVE / NON EX.	-		STRAIGHTNESS 1.70 MM/M	END PRODUCT	LENGTH EXPOSED SURFACE: 576.68 MM									
TYP. WALL THICKNESS UNLESS INDICATED OTHERWISE			MATCHING NO.	END APPLICATION	UNLESS NOTED OTHERWISE ALL DIMENSIONS WILL BE IN ACCORDANCE WITH IS : 3965 - 1981 TOLERANCES.									
0.50 TYP. RADIUS AT ALL CORNERS UNLESS INDICATED OTHERWISE			0 SOLID 0 SEMI-HOLLOW 0 HOLLOW		CUSTOMER APPROVAL OF DIMENSIONS AND TOLERANCES CONSTITUTE ACCEPTANCE OF MATERIAL WITHIN PRINT.									
												CUST'S DWG NO: AS PER DAD DWG.		
												ENG. NO.: I-39618-R1		
												SECTION NO. -		

