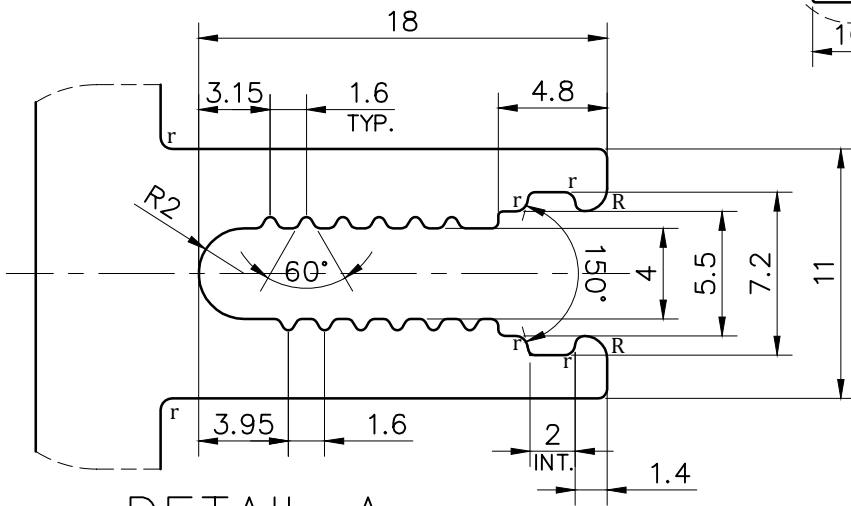
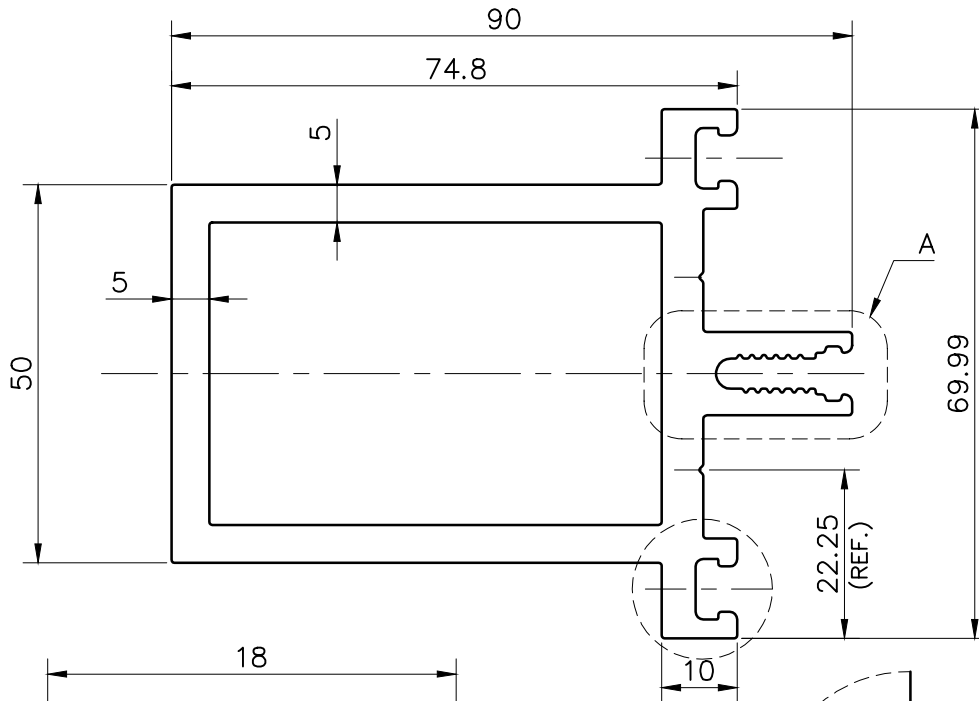
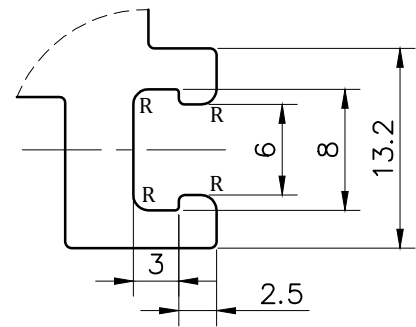


BEFORE APPROVAL CHECK ALL DIMENSIONS PROPERLY

PROPOSED DRAWING  
Q00610



DETAIL A  
SCALE 3:1



DETAIL B  
SCALE 2:1

**NOTE:-**

**r= 0.50 RADIUS (6 PLACES)**

**R= 1.0 RADIUS (6 PLACES)**

**V= 0.5x90° V GROOVE (2 PLACES)**

1. STRAIGHTNESS= 1.7mm/M
2. TWIST= 1.7mm/M
3. ANGULARITY= ±2°
4. FLATNESS= 0.007xWIDTH

UNCONTROLLED COPY

1) THE WELDING LINE IN THE EXPOSED SURFACE OF PROFILE IS UNAVOIDABLE. 2) PLEASE SPECIFY IMPORTANT SIZES. 3) PLEASE SPECIFY IF THIS PROFILE MATCHES WITH OTHER PROFILES. 4) PLEASE SPECIFY EXPOSED SURFACE. OTHERWISE CONSIDERED AS NO EXPOSED SURFACE. 5) FINISH :-  MILL FINISH /  ANODIZING /  POWDER COATING



SYMBOL OF QUALITY  
AN ISO 9001 COMPANY

**JINDAL ALUMINIUM LTD.**  
BHIWADI-301019 (INDIA)

	NAME	DATE
DRAWN	ASHUTOSH	09-05-2023
CHECKED		
APPROVED		

1. ALL DIMENSIONS ARE IN mm.
2. ROUND OFF ALL SHARP CORNERS WITH 0.40 mm.
3. TOLERANCES WILL BE AS PER BS:EN-755-9 , UNLESS OTHERWISE SPECIFIED

SCALE	1:1&2:1
AREA mm <sup>2</sup>	1404.62
PERIMETER mm.	401.73

PARTY'S NAME	M/s. SHANKAR FENESTRATIONS & GLASSES	WEIGHT kg/m	3.792
PARTY'S DRAWING No.	AS PER DRAWING -(Q00610)	DRAWING No.	SECTION No.
ALLOY & TEMPER	6063-T6		
DESCRIPTION	INDUSTRIAL MISC.		