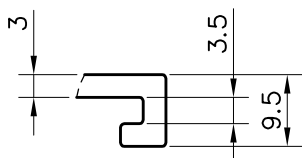
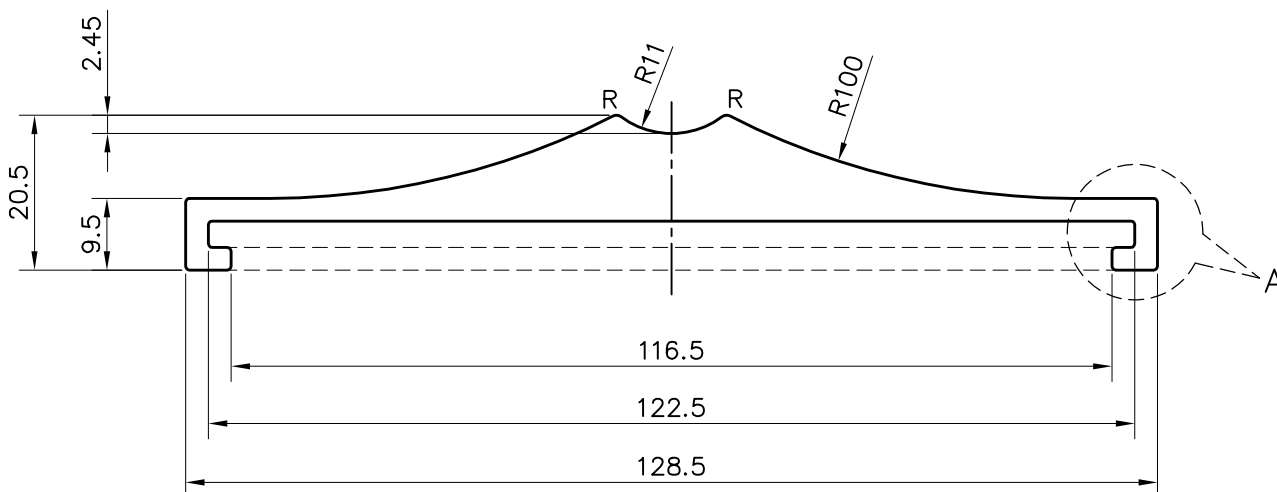


BEFORE APPROVAL CHECK ALL DIMENSIONS PROPERLY

PROPOSED DRAWING




DETAIL A
SCALE 2:1

NOTE:
R= RADIUS 1mm (2 PLACES)

1. STRAIGHTNESS= 1.7mm/M
2. TWIST= 1.7mm/M
3. ANGULARITY= $\pm 2^\circ$
4. FLATNESS= 0.007xWIDTH

1) THE WELDING LINE IN THE EXPOSED SURFACE OF PROFILE IS UNAVOIDABLE. 2) PLEASE SPECIFY IMPORTANT SIZES.
3) PLEASE SPECIFY IF THIS PROFILE MATCHES WITH OTHER PROFILES. 4) PLEASE SPECIFY EXPOSED SURFACE. OTHERWISE CONSIDERED AS NO EXPOSED SURFACE. 5) FINISH :- MILL FINISH / ANODIZING / POWDER COATING

| | | | |
|---|--|----------------------|-------------|
|  SYMBOL OF QUALITY AN ISO 9001 COMPANY | JINDAL ALUMINIUM LTD. BHIWADI-301019 (INDIA) | NAME | DATE |
| | | DRAWN | AMIT |
| | | CHECKED | |
| | | APPROVED | |
| 1. ALL DIMENSIONS ARE IN mm. 2. ROUND OFF ALL SHARP CORNERS WITH 0.40 mm. 3. TOLERANCES WILL BE AS PER BS:EN-755-9 , UNLESS OTHERWISE SPECIFIED | | SCALE | 1:1 & 2:1 |
| | | AREA mm ² | 910.70 |
| | | PERIMETER mm. | 302.974 |
| | | WEIGHT kg/m | 2.459 |
| PARTY'S NAME | M/s. ACCURATE ENGINEERS, DELHI | DRAWING No. | SECTION No. |
| PARTY'S DRAWING No. | AS PER DRAWING SAMPLE | - | - |
| ALLOY & TEMPER | 6063-T6 | | |
| DESCRIPTION | INDUSTRIAL. MISC. | | |