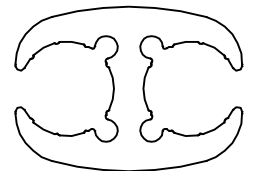
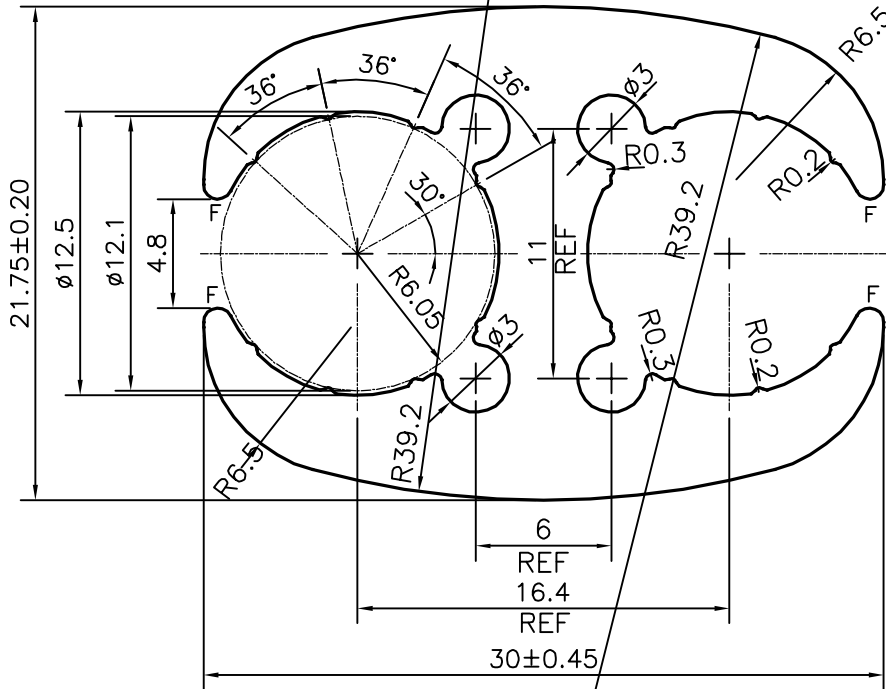


P-22317

Q00125




1:1



APPROXIMATE WEIGHT RANGE - 0.802 - 0.980 kg/m F = FULL RADIUS (4 PLACES)

- 1) THE WELDING LINE IN THE EXPOSED SURFACE OF PROFILE IS UNAVOIDABLE. 2) PLEASE SPECIFY IMPORTANT SIZES.
- 3) PLEASE SPECIFY IF THIS PROFILE MATCHES WITH OTHER PROFILES. 4) PLEASE SPECIFY EXPOSED SURFACE. OTHER WISE CONSIDERED AS NO EXPOSED SURFACE. 5) FINISH :- MILL FINISH / ANODIZING / POWDER COATING

 SYMBOL OF QUALITY AN ISO 9001 COMPANY	JINDAL ALUMINIUM LTD. BANGALORE-560073 (INDIA)	NAME		DATE
		DRAWN	J.P.KAUSHIK	15-03-2021
1. ALL DIMENSIONS ARE IN mm. 2. ROUND OFF ALL SHARP CORNERS WITH 0.40 mm. 3. TOLERANCES WILL BE AS PER IS:3965-1981 UNLESS OTHERWISE SPECIFIED		CHECKED		
		APPROVED		
PARTY'S NAME SIDHARTH STEELS & GLASS INDUSTRIES, JAIPUR		SCALE		3:1
		AREA mm ²		297.066
PARTY'S DRAWING No. AS PER SAMPLE		PERIMETER mm.		173.834
		WEIGHT kg/m		0.802
ALLOY & TEMPER 6063 T6		DRAWING No.		SECTION No.
		P-22317		-
DESCRIPTION MISC. SECTION		-		-