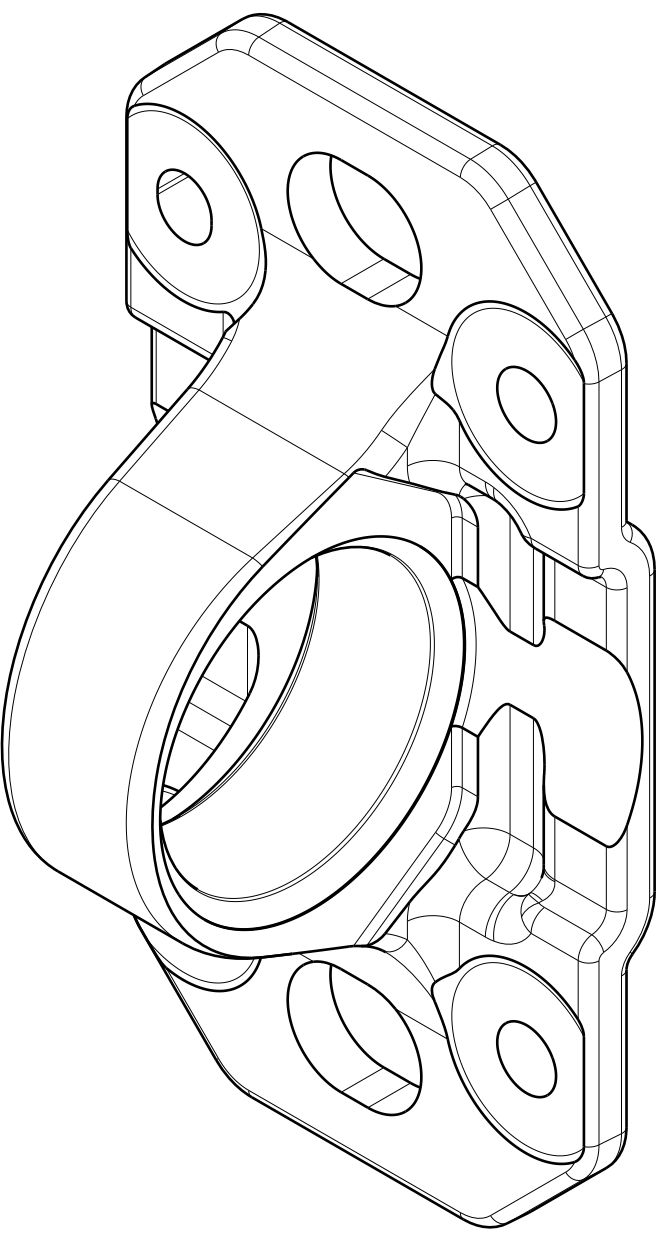
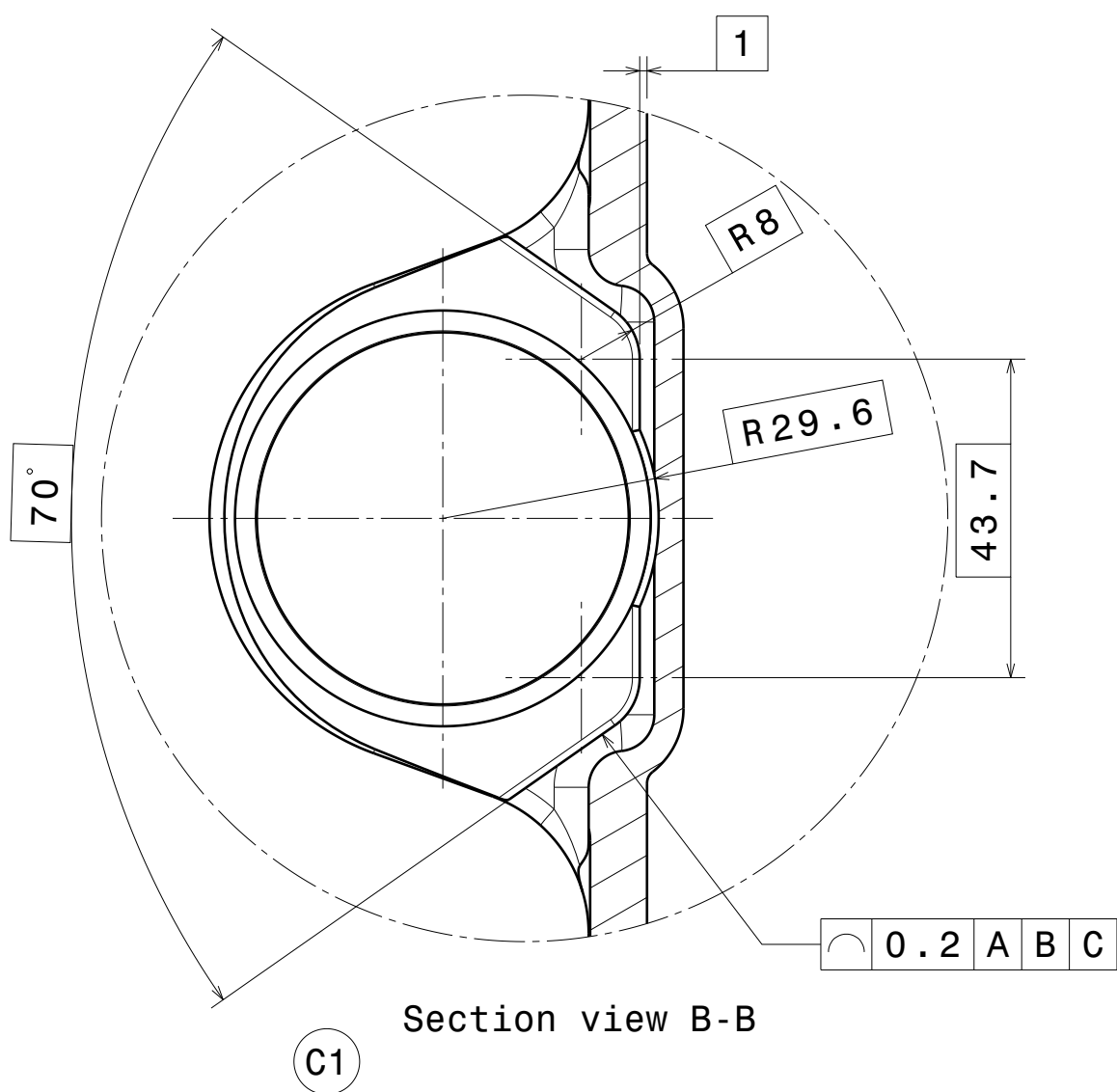
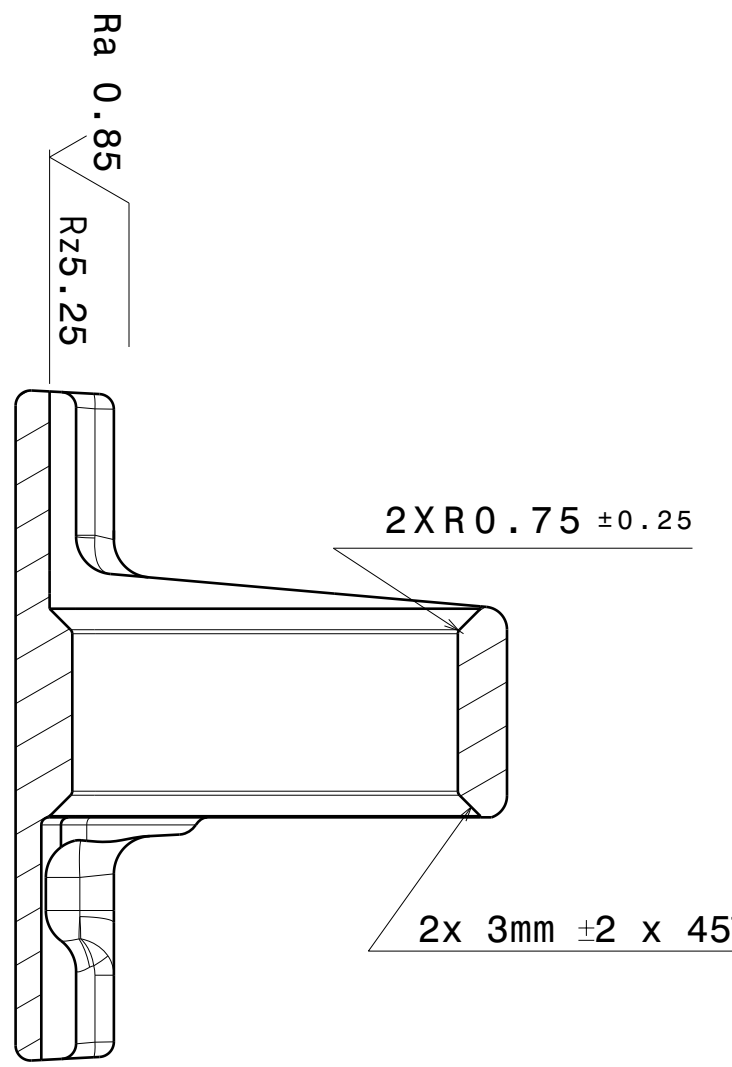
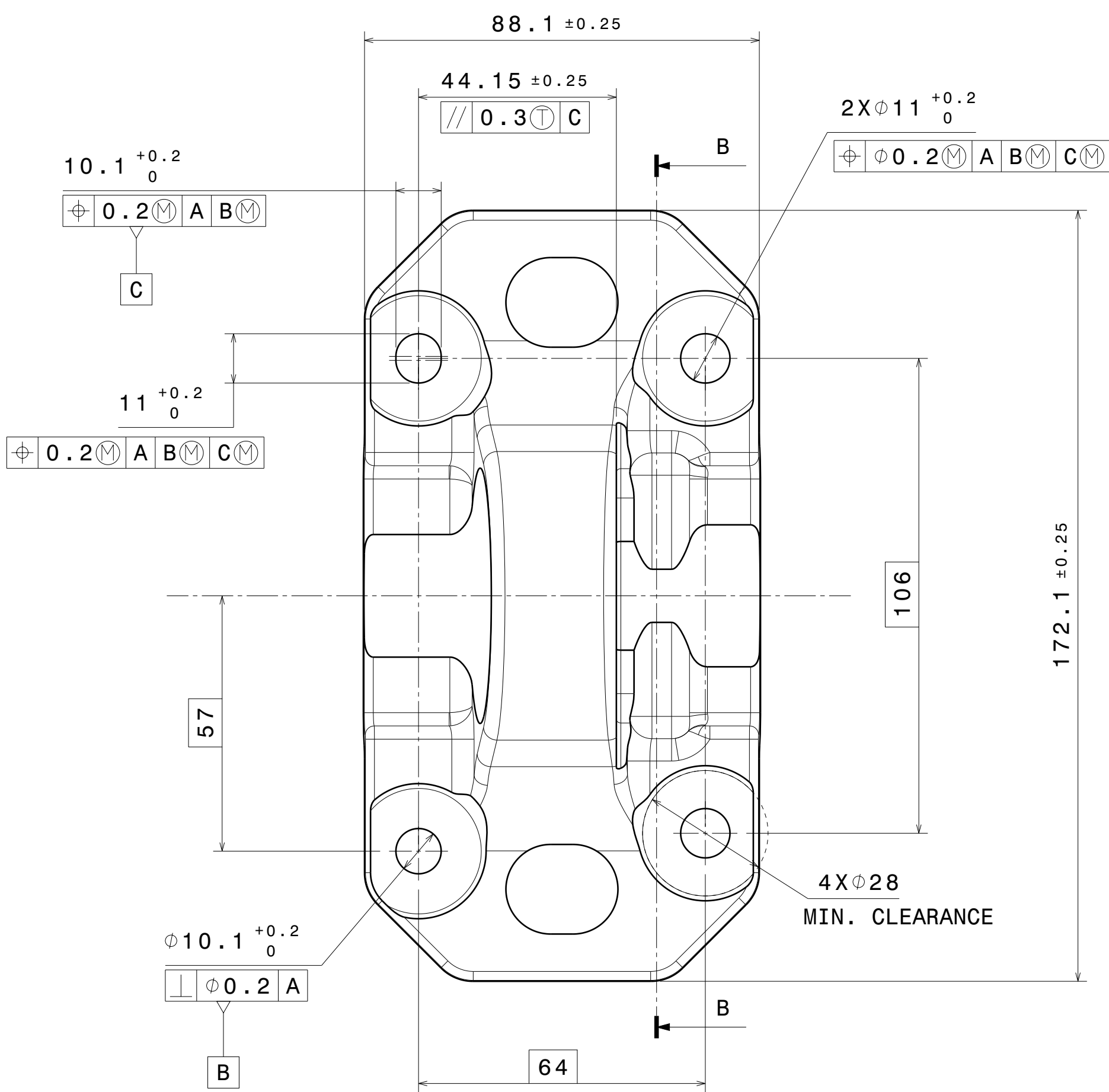
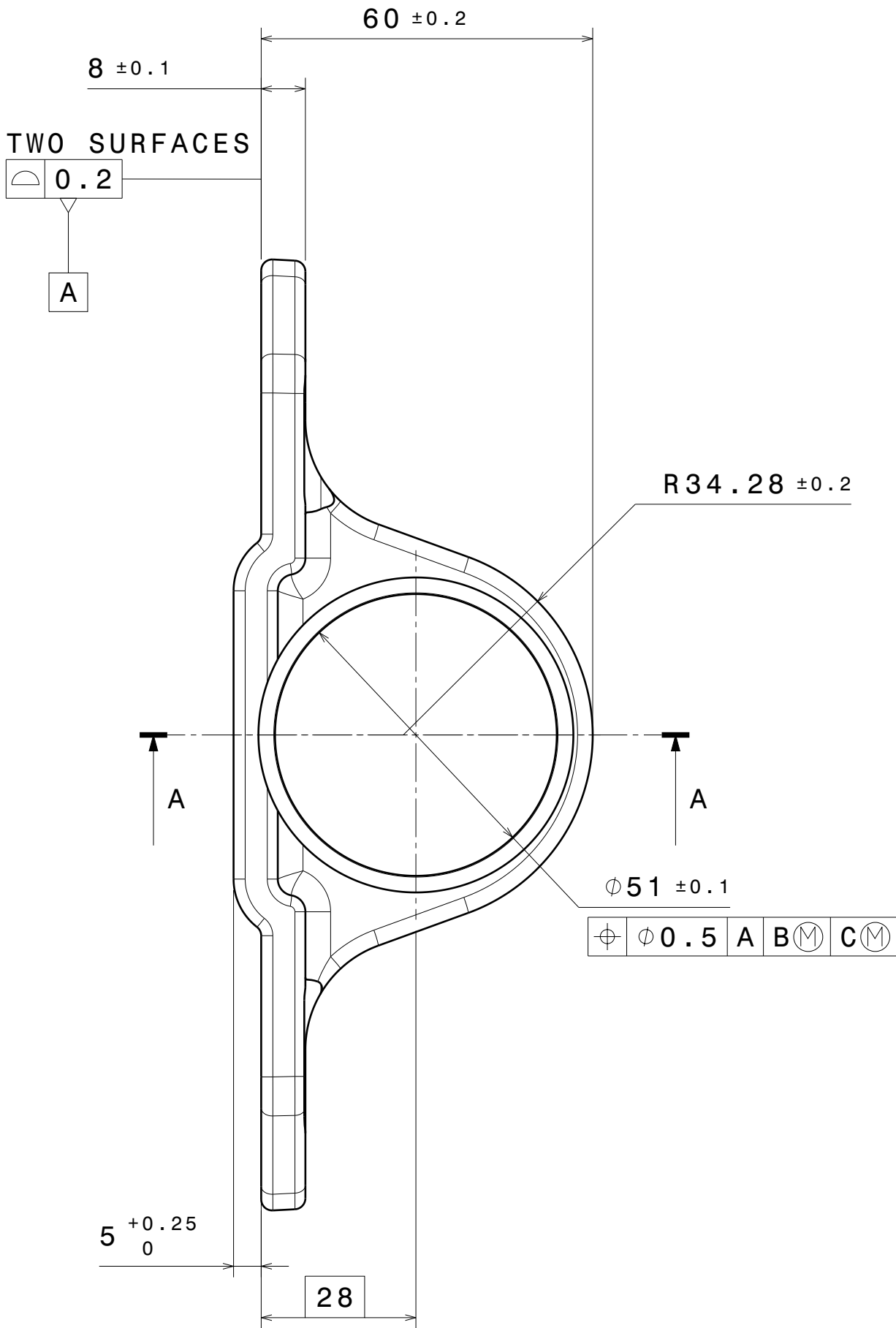
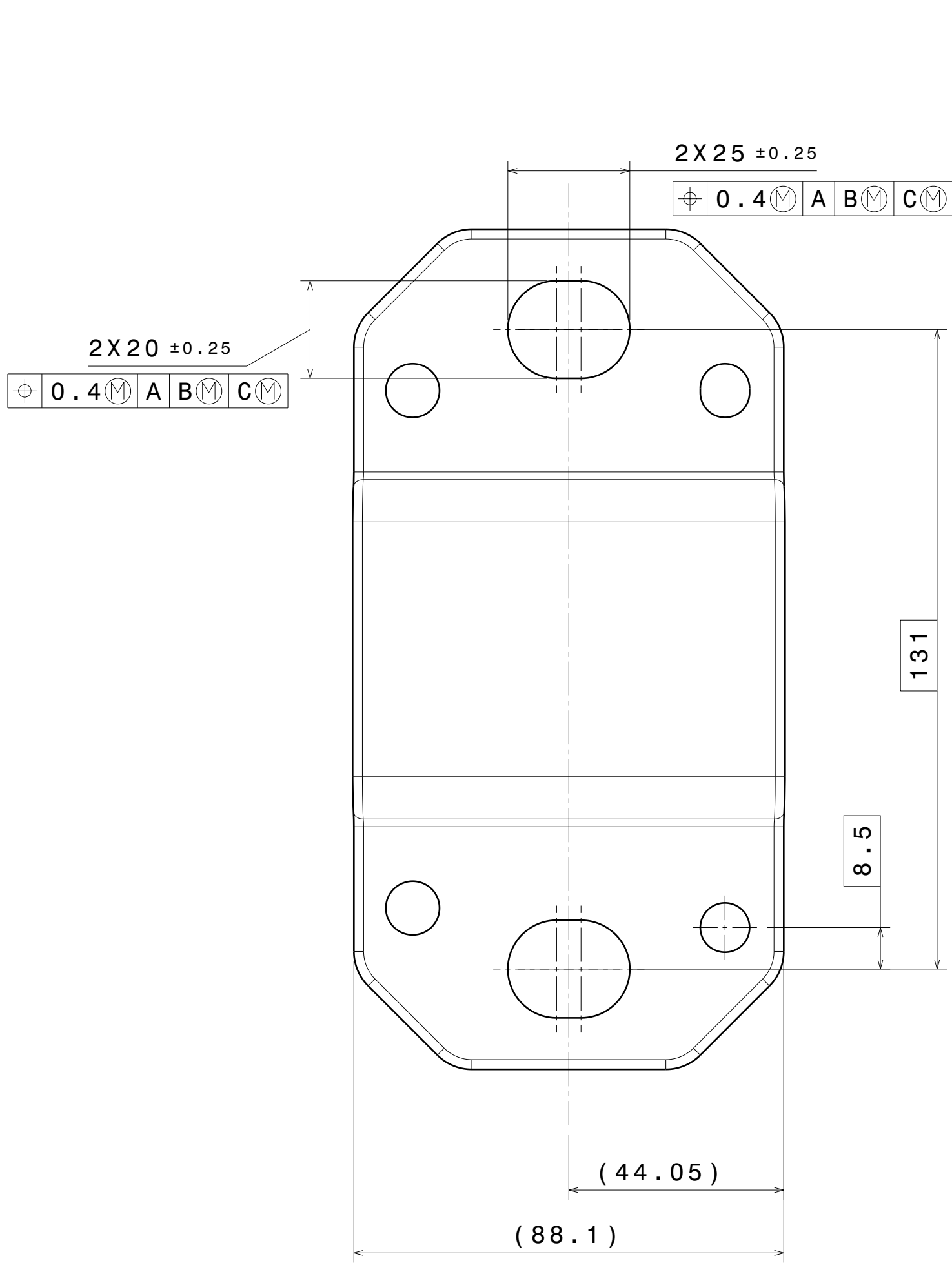


VER	PLS	DESCRIPTION	CHD BY	DATE	APD BY	ECR
A	-	INITIAL PRODUCTION RELEASE				2541
B	1	1. COMPLETE PART UPDATE	RPC	10JAN25	JV	2563
C	1	1. ADDED DETAIL VIEW	RPC	27MAR25	JV	2657

Q03375



- NOTES:
1. MATERIAL: ALUMINUM 6061-T6 RAW MATERIAL. CERTIFICATIONS PROVIDED WITH EACH SHIPMENT. UTS > 310 MPa; YTS > 276 MPa; ELONGATION > 17%.
  2. 3D CAD IS MASTER AND TAKES PRECEDENCE OVER 2D DRAWING. ANY DIMENSIONS NOT SPECIFIED IN THE DRAWING SHALL BE DETERMINED FROM 3D.
  3. PART SHALL BE FREE FROM BURRS AND SHARP EDGES.
  4. PART MARKING LOCATION AND METHOD WILL BE COORDINATED BETWEEN SUPPLIER AND HARBINGER MOTORS.
  5. FINISHED PART SHALL BE FREE OF OILS, LUBRICANTS, AND OTHER CONTAMINANTS PRIOR TO PACKAGING.
  6. FIRST ARTICLE PIECE SHALL BE TENSILE TESTED FOR ULTIMATE TENSILE STRENGTH, YIELD STRENGTH, AND ELONGATION PER ASTU E18. RESULTS REPORTED WITH SHIPMENT.
  7. FINISHED PART TO BE MARKED ACCORDING TO HARBINGER SPECIFICATION HM-OCS-003 LEVEL 2.
  8. FINISHED PART TO CONFORM WITH ALL APPLICABLE REQUIREMENTS IN HM-OCS-003.


RAW PART AS RECIEVED:  
Ra 0.6  
Rz 3.65

MACHINED / RADIAL LINES:  
Ra 0.75 TO 0.85  
Rz 4.25 TO 5.25

PROFILOMETER SETTINGS:  
0.5Mmm/s  
X5  
C=0.8

-0.2 EDGES acc.  
DIN ISO 13715

Isometric view  
Scale: 1:1

DRN.BY: R.CHURCH	14DEC24	PROPERTY OF ANP	 ANAND NVH PRODUCTS INC.
APD.BY: J.VANCE	14DEC24	THIS DRAWING IS THE SOLE PROPERTY OF ANP. IT CANNOT BE COPIED BY ANYONE WITHOUT WRITTEN PERMISSION OF ANP.	
CAD SYSTEM: CATIA V5	PROTECTION MARK: ISO 16015	UNIT - MM	MODEL IS MASTER FOR SCALE - 1:1 ALL NON-DIMENSIONED FEATURES
TOLERANCED: ISO 2768-mk	ISO 8015	ISO 3302-103 (RUBBER)	TITLE: BRACKET
MASS:0.409kg	ISO 8015	ISO 15001 (PLASTIC)	SHEET - A2
CUST REFERENCE NO. P-00191602 C.1	PRODUCTION REFERENCE NO. 733	PART NO.: U-ET01806-S01	C