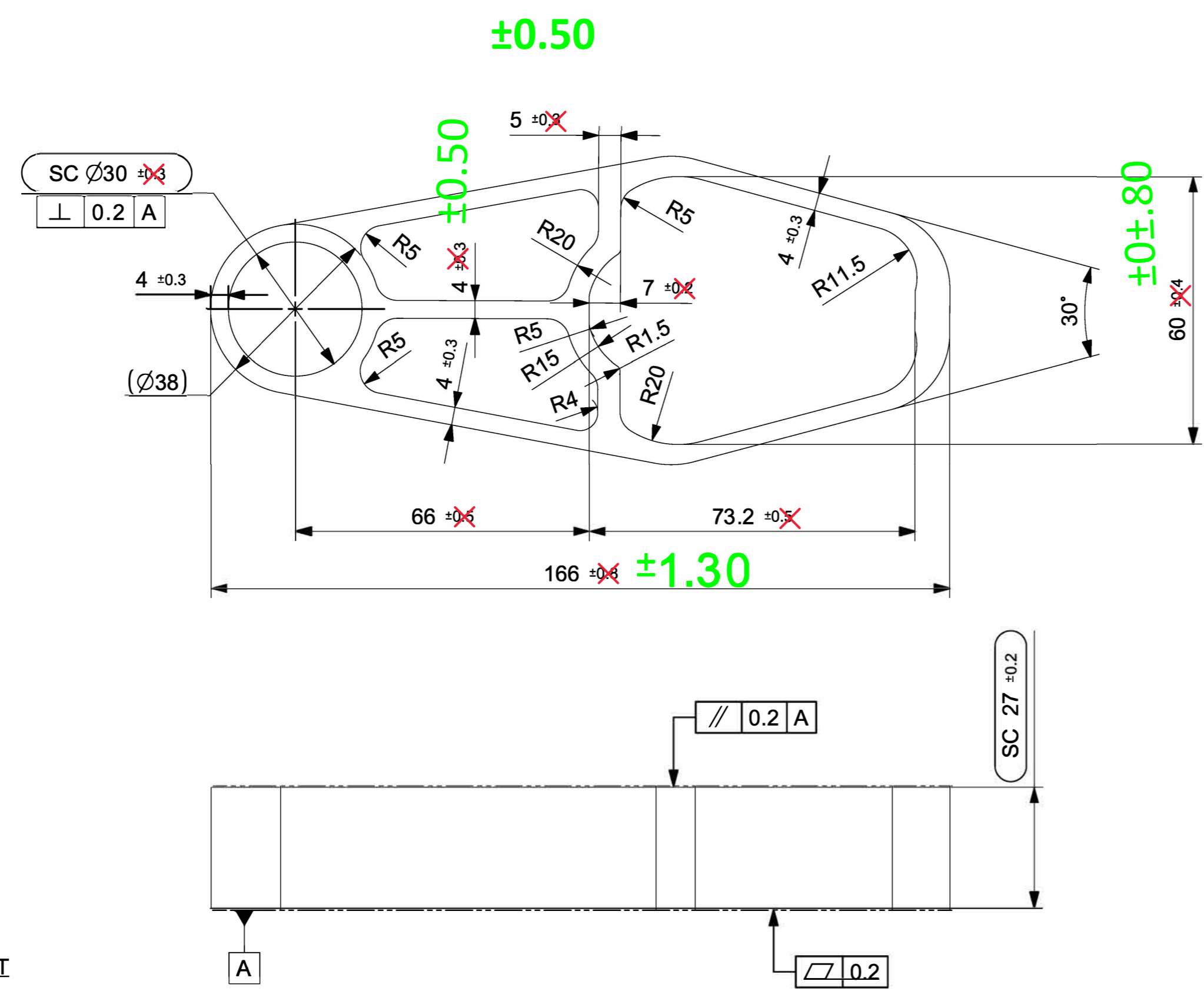
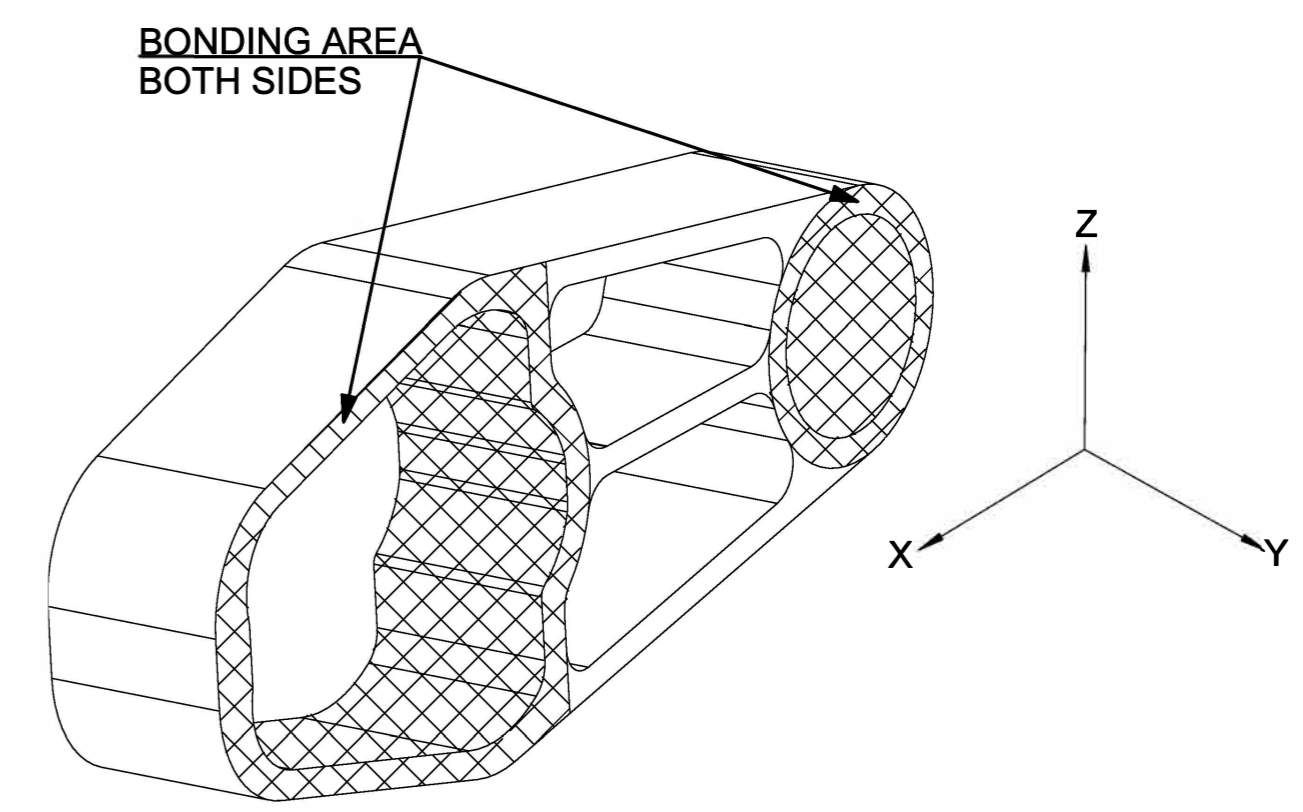


Q01801



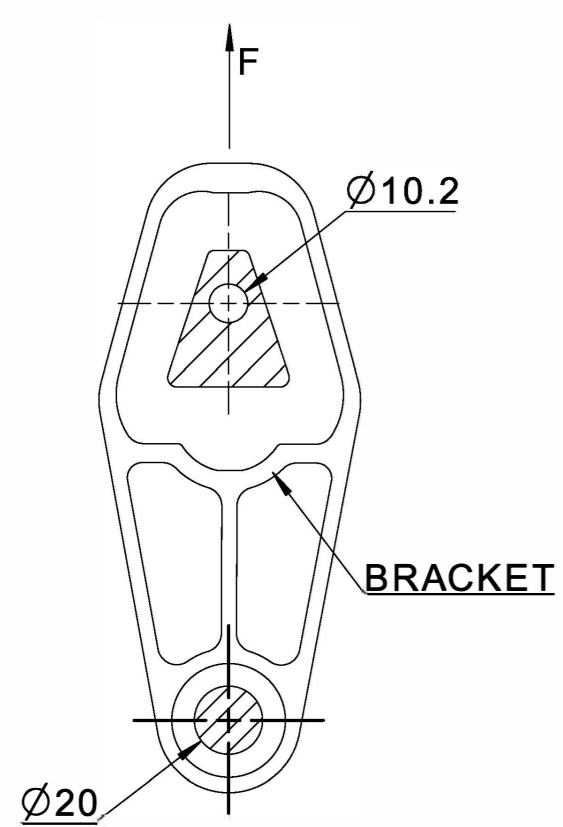
ALLOY :- 6063 T6



Isometric view
Scale: 1:1

- NOTES:-
 1) PART SHOULD BE FREE FROM BURRS, CRACK, DAMAGE, ETC.
 2) FOR ANY MISSING DIMENSION REFER 3D CAD.

* FINAL PROTO DRAWING - REFER XD-EK0102-302_Rev Dc



LINK BROKEN TEST
 TEST VELOCITY : 3mm/min
 Z-DIRECTION BROKEN TEST FORCE: 13 kN

SPECIAL CHARACTERISTICS
 CC/CC A/SC/EC
 ACCORDING TO LI_01_7.3_0049

CONDITION	SYMBOL	SPECIFICATION	REFERENCE STANDARD	RESPONSIBLE
DELIVERY			OPI 01-7.4-0006	COMPONENT SUPPLIER
PREPARATION 31003.85mm ²	DEGREASING	√ E	TES10300_2	
	GRID-BLASTING	√ S	TES10400_#	
BONDING 11753.63mm ²	PRIMER	√ P	TES2000# OR (CHEMLOCK-205 & 6411)	
	COVER	√ C		

GENERAL TOLERANCES UNLESS OTHERWISE SPECIFIED		
CAST IRON WITH SPHEROIDAL GRAPHITE/ GREY CAST IRON ISO 8062 DCTG 10	LIGHT METAL ALLOYS ISO 8062 DCTG 6 GCTG 4	ALUMINIUM FORGINGS DIN EN 586-3 DROPPED FORGINGS DIN EN 10243 F
ALUMINIUM/ALUMINIUM ALLOYS/ EXTRUDED ROD BAR/ TUBE AND PROFILES NF EN 755-9 DIN EN 755-9	RUBBER ISO 3302 M3	EDGES ISO 13715
	PLASTIC MOULDED PARTS NF T 58-000 Standard DIN 16742 TG 7	SURFACES ISO 1302
THIRD ANGLE PROJECTION ISO 5456-2	STAMPED PARTS DIN 6930-m	GEOMETRICAL TOLERANCES FOR FEATURES WITHOUT INDIVIDUAL TOLERANCE INDICATIONS ISO 2768-mK
	DIMENSIONS FOR WELDED CONSTRUCTIONS DIN EN ISO 13920 B	GEOMETRICAL TOLERANCING ISO 8015

DRAWN BY	DATE	NAME	THE MATHEMATICAL DATA IS THE MASTER FOR THIS PART. ENGLISH VERSION IS THE AUTHORITATIVE VERSION. MANUAL CHANGES ARE NOT ALLOWED
CHECKED BY	20.11.2018	ARJUN	
APPROVED BY	20.11.2018	VINAY KUMAR	
RELEASE STATUS		PRODUCTION	REFER TO PROTECTION NOTICE ISO 16016: 2007-12
DESCRIPTION			MATERIAL: EN AW 6063 T6 (DIN EN 755-2)
LINK			SCALE 1:1
DRAWING NUMBER			SIZE A2
DD-EK0102-302		REV	WEIGHT [g] (CALCULATED)
		Aa	172 g

