

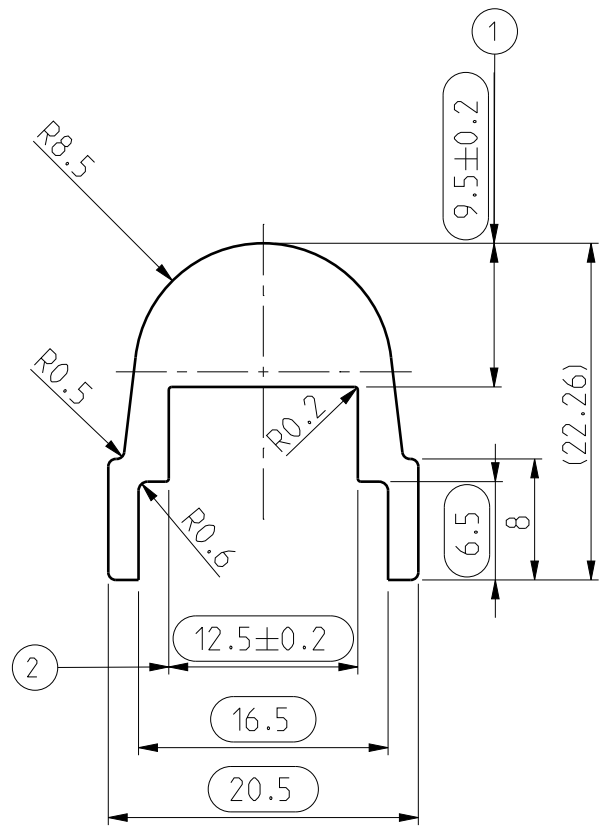
ID	Description	Date	By	Appr.
A	Drawing release	21.11.2014	HKe	
B	Inspection dimensions numbered	11.05.2015	HKe	

Model RABP452 PART [A]
Drawing RABP452.dwg

Q00189

Symbol	Instruction of the Symbol	No. of Dim
	Basic Dimension. To be measured in full measurement of part	2
	Cpk dimension. To be measured in process capability study	5
	SPC dimension. To be measured during production	-

Note: All numbered dimensions are to be measured in full measurement



NOTE:-
 1. HARDNESS 95-115HB
 2. NO SHARP EDGES, FLASHES, SCRATCHES AND BURRS ARE ALLOWED.
 3. THIS PART SHOULD BE CUTTED AT AN ANGLE $90 \pm 0.25^\circ$.
 4. FINAL FINISHING WORK STAGES ARE: DRUMMING, WASHING, PICKLING.

Tolerance ISO 2768-m
 >0.5 <=3 ±0.1
 >=6 ±0.1
 >6 =30 ±0.2
 >30 =120 ±0.3
 >120 =400 ±0.5
 >400 <=1000 ±0.8

Part	Code	Description	Pcs	Weight (g)/pcs
Supplier: -	Tool No: -	Volume -	Weight (g)	106
Material: EN A 6082 T6		Ensto Mat: -		
 Ensto Finland Oy Ensto Utility Networks		 Stopper profile 7034	Replaces:	
Scale 2:1			Replaced:	
Date 21.11.14			Drw No: 000204099 B	
By HKe			Ref: PSS953.2	
Checked			Code: RABP452	
Sheet No: 1 (1)		Ctrl		