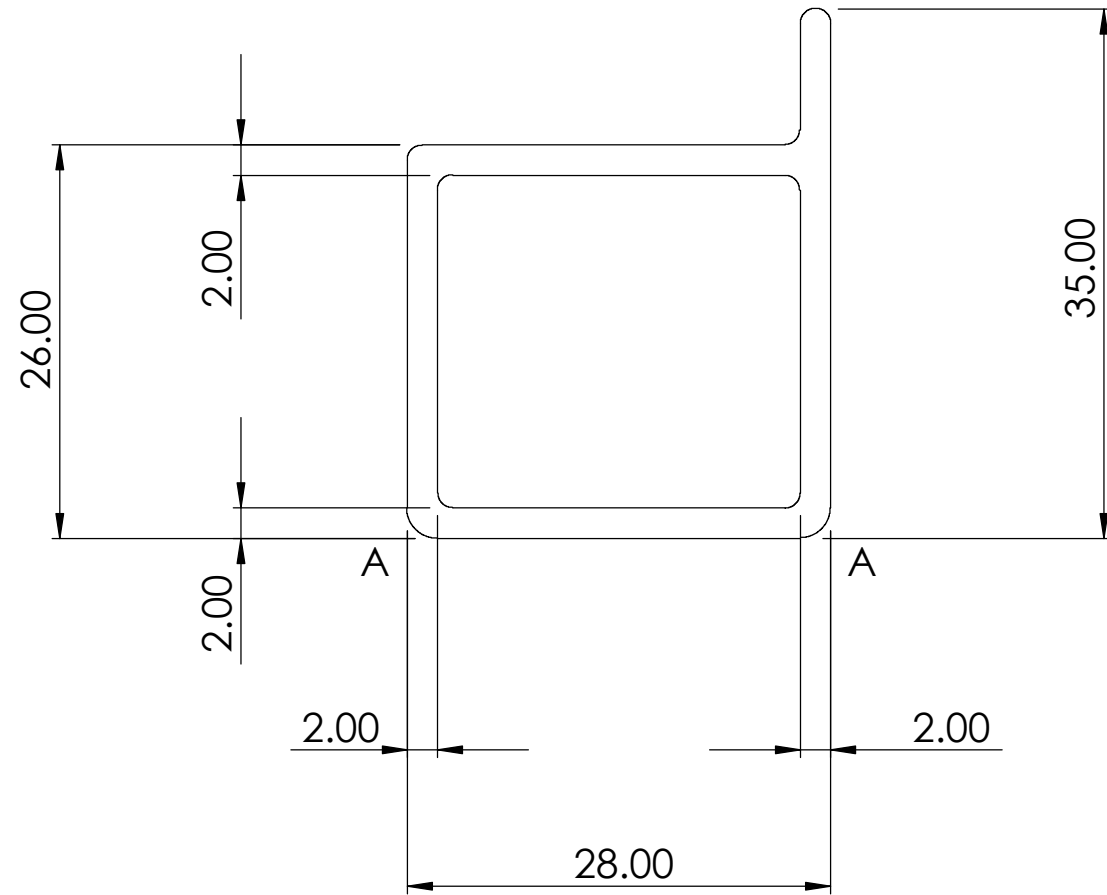


REMOVE ALL SHARP CORNERS/EDGES CAD DRAWING DO NOT MODIFY

DO NOT SCALE DRAWING

UNCONTROLLED COPY  
NOT FOR PRODUCTION  
UNLESS OVERSTAMPED  
"CONTROLLED"  
IN RED INK

BY	DATE	ALTERATIONS	ISSUE
KDE	24/01/2017	PRODUCTION RELEASE PR17-002	A
-	-	-	-
-	-	-	-
-	-	-	-



COMPONENT INFORMATION

1. AREA - 216.7 mm<sup>2</sup>
2. MATERIAL - ALUMINIUM ALLOY  
TO BS EN755 6063 T6  
ESTIMATED WEIGHT = 0.5872 KG/M

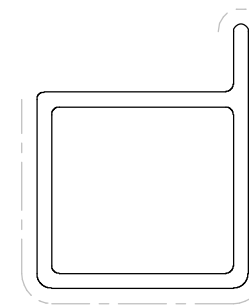
DESIGNER	KDE 08/06/2016
TOLERANCES UNLESS OTHERWISE SPECIFIED	
X X.X X.XX HOLE CRS ANGULAR	TO EN755-9
MATERIAL	SEE NOTES
FINISH	EXTRUDED
WEIGHT	CE No. CE15-143

*Widney*

**TITLE**  
SIDE RAIL EXTRUSION

PART No	SHT 1 OF 1
29/64404	ISSUE A

A DENOTES 2.0 RAD  
ALL UNSPECIFIED RADS 1.0  
--- DENOTES VISIBLE SURFACES



A3 THIRD ANGLE PROJECTION

DIMENSIONS ARE IN MILLIMETRES UNLESS OTHERWISE STATED

METRIC SCREW THREADS SHALL CONFORM TO THE LIMITS AND TOLERANCES SPECIFIED IN THE CURRENT BS3643 PT2 CLASS 6g EXTERNAL OR 6H INTERNAL

© WIDNEY MANUFACTURING LTD THIS DOCUMENT IS CONFIDENTIAL AND THE DOCUMENT AND THE COPYRIGHT THEREIN ARE THE PROPERTY OF WIDNEY MANUFACTURING LTD. THE DOCUMENT AND ANY INFORMATION THEREIN MAY NOT BE USED COPIED OR DISCLOSED TO ANY THIRD PARTY WITHOUT THE PRIOR WRITTEN AUTHORISATION OF WIDNEY MANUFACTURING LTD