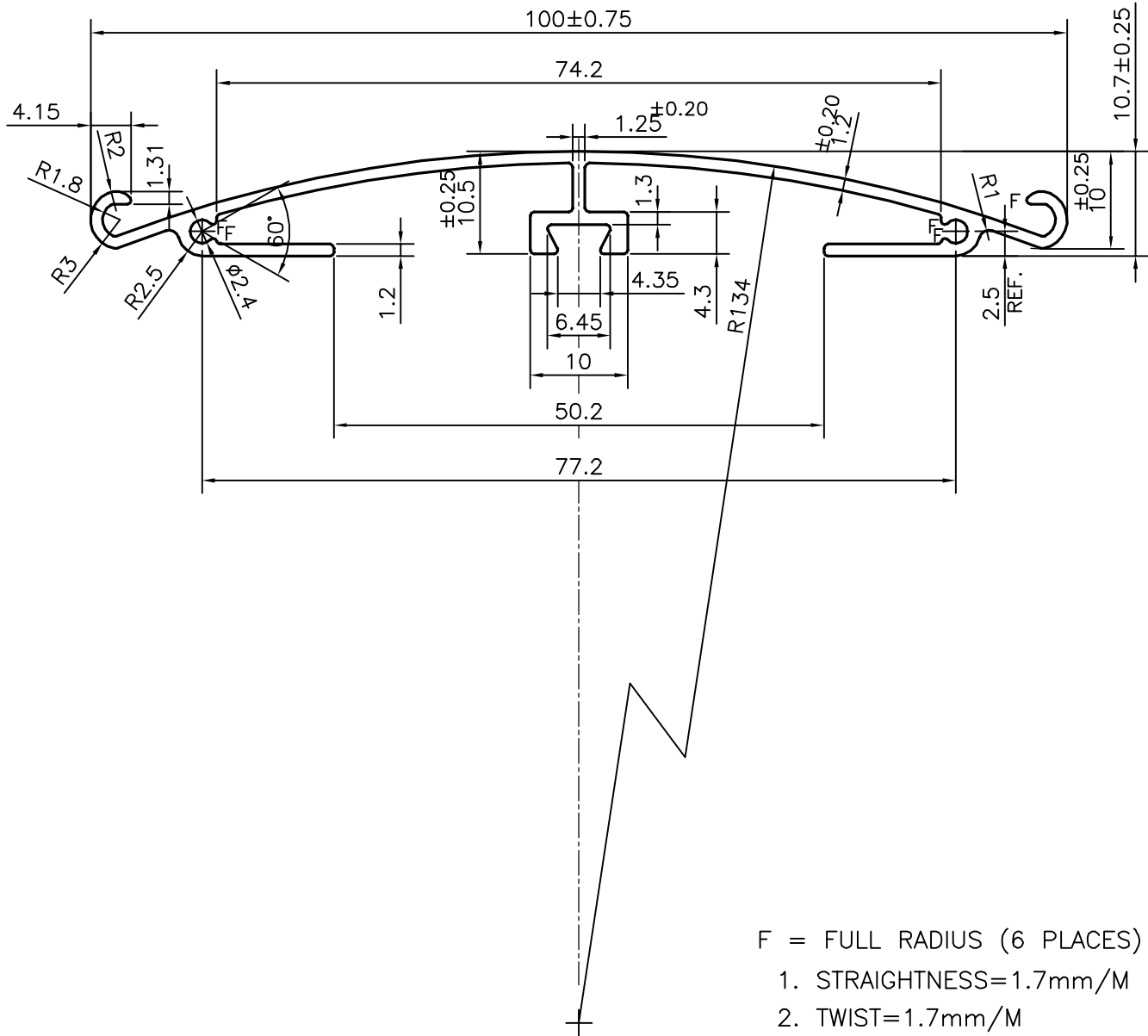
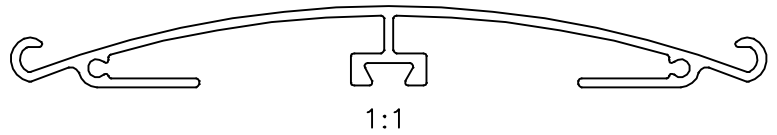



P-23066



- F = FULL RADIUS (6 PLACES)
1. STRAIGHTNESS=1.7mm/M
 2. TWIST=1.7mm/M
 3. ANGULARITY= ±2°
 4. FLATNESS =0.007xWIDTH

APPROXIMATE WEIGHT RANGE -0.520 - 0.636 kg/m

1) THE WELDING LINE IN THE EXPOSED SURFACE OF PROFILE IS UNAVOIDABLE. 2) PLEASE SPECIFY IMPORTANT SIZES.
 3) PLEASE SPECIFY IF THIS PROFILE MATCHES WITH OTHER PROFILES. 4) PLEASE SPECIFY EXPOSED SURFACE. OTHER WISE CONSIDERED AS NO EXPOSED SURFACE. 5) FINISH :- MILL FINISH / ANODIZING / POWDER COATING

 SYMBOL OF QUALITY AN ISO 9001 COMPANY	JINDAL ALUMINIUM LTD. BANGALORE-560073 (INDIA)	NAME		DATE
		DRAWN	J.P.KAUSHIK	10-10-2021
		CHECKED		
		APPROVED		
1. ALL DIMENSIONS ARE IN mm. 2. ROUND OFF ALL SHARP CORNERS WITH 0.40 mm. 3. TOLERANCES WILL BE AS PER,IS:3965-1981 UNLESS OTHERWISE SPECIFIED		SCALE		1.5:1
		AREA mm ²	214.179	
		PERIMETER mm.	338.535	
		WEIGHT kg/m	0.578	
		DRAWING No.	SECTION No.	
PARTY'S NAME		ALUMINIUM TRADING COMPANY, DELHI	P-23066	-
PARTY'S DRAWING No.		AS PER DRAWING	-	-
ALLOY & TEMPER		6063 T6		
DESCRIPTION		NAME PLATE SECTION		