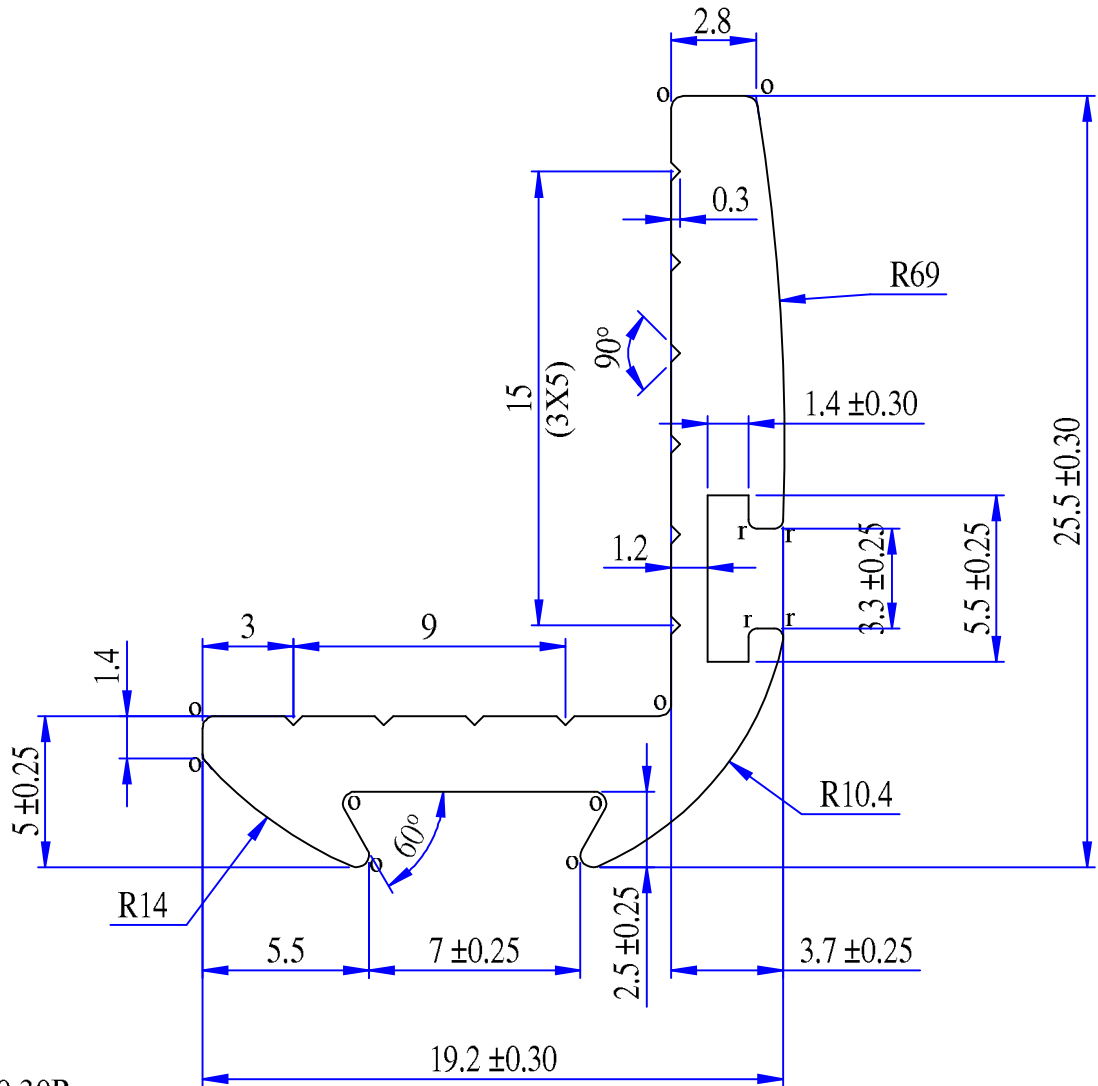
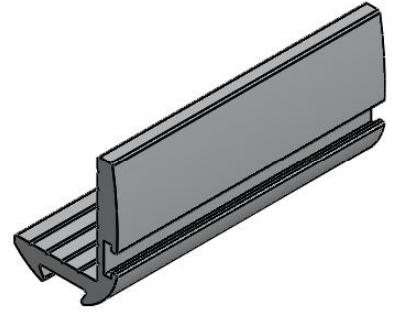


Q00209



**NOTE:-**  
 $r = 0.30R$   
 $O = 0.40R$

**LOCATION:-**  
 ALL DIMENSION ARE IN mm.  
 UNSPECIFIED CORNER RADIUS:0.40

**PLEASE SPECIFY THE EXPOSED SURFACE**  
 TOL. AS PER BS EN 755-9:2008  
 UNLESS SPECIFIED

TWIST=±1/4°/300 M.M./M.  
 FLATNESS= WIDTH X 0.005mm.  
 STRAIGHTNESS= 1.50 M.M./MTR.  
 ANGULARITY=±1.5°

**INDO ALUSYS INDUSTRIES LIMITED BHIWADI RAJASTHAN - 301019**

PARTY SAMPLE & DRG.		EXT-15568-01	PARTY NAME M/S ANTARCTICA EQUIPMENT			REF:- AS PER EMAIL ON Dt.-10.07.15		
			DRAWN	DHARMVIR	11.07.15	AREA	113.95	MM <sup>2</sup>
			CHECKED			WEIGHT	0.308	KG/M.
			APPROVED			WT. RANGE	-----	Kg/12'
		V GROOVE ADD.	SCALE	1:1 & 4:1	DATE	ALLOY	6063-T6	
001	(REF.)	AS PER EMAIL ON Dt.-03.02.16	CRITICAL DIM.	*		MAL NO	15047	
REV. STATUS	REV. NO.	DESCRIPTION	SIGN DATE	PERIMETER	INT.	SEC.NO.		
A4		REVISION			EXT.		99.76	