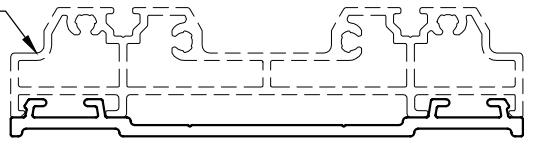
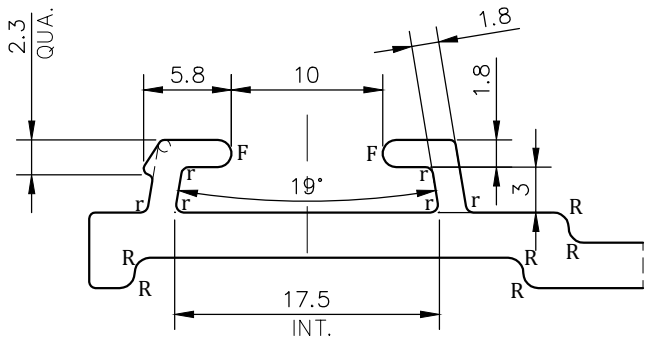
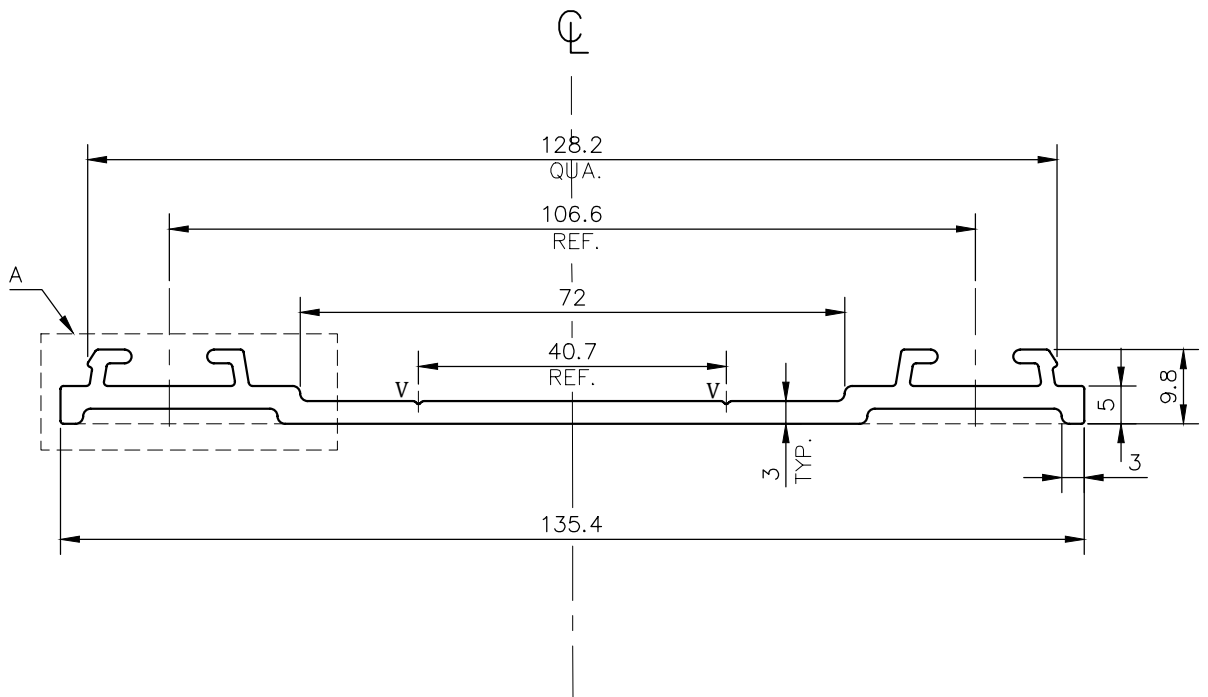


P-JAL-B-242

P-JAL-B-073



SCALE 1:2




DETAIL A  
SCALE 2:1

**NOTE:-**  
**r= 0.50 RADIUS (12 PLACES)**  
**R= 1.0 RADIUS (12 PLACES)**  
**F= FULL RADIUS (4 PLACES)**  
**V= 0.4x90° V GROOVE (2 PLACES)**

1. STRAIGHTNESS= 1.7mm/M
2. TWIST= 1.7mm/M
3. ANGULARITY= ±2°
4. FLATNESS= 0.007xWIDTH

**UNCONTROLLED COPY**

1) THE WELDING LINE IN THE EXPOSED SURFACE OF PROFILE IS UNAVOIDABLE. 2) PLEASE SPECIFY IMPORTANT SIZES. 3) PLEASE SPECIFY IF THIS PROFILE MATCHES WITH OTHER PROFILES. 4) PLEASE SPECIFY EXPOSED SURFACE. OTHERWISE CONSIDERED AS NO EXPOSED SURFACE. 5) FINISH :-  MILL FINISH /  ANODIZING /  POWDER COATING

 SYMBOL OF QUALITY AN ISO 9001 COMPANY	<b>JINDAL ALUMINIUM LTD.</b> BHIWADI-301019 (INDIA)	NAME	DATE
		DRAWN	ASHUTOSH 08-06-2023
		CHECKED	
		APPROVED	
1. ALL DIMENSIONS ARE IN mm. 2. ROUND OFF ALL SHARP CORNERS WITH 0.40 mm. 3. TOLERANCES WILL BE AS PER BS:EN-755-9 , UNLESS OTHERWISE SPECIFIED		SCALE	1:1
		AREA mm <sup>2</sup>	487.83
		PERIMETER mm.	346.19
		WEIGHT kg/m	1.317
PARTY'S NAME	PRANAV DOORS & WINDOWS PVT. LTD., MOHALI	DRAWING No.	SECTION No.
PARTY'S DRAWING No.	AS PER AUTOCAD -PF0034	P-JAL-B-242	
ALLOY & TEMPER	6063-T6	-	-
DESCRIPTION	ARCHITECTURAL MISC. SECTION		