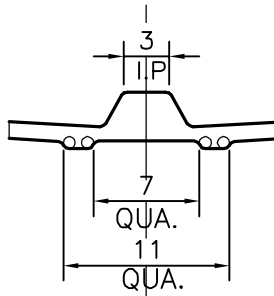
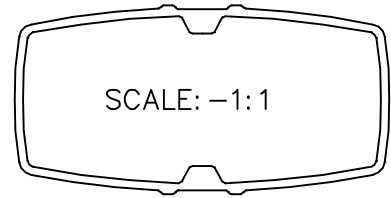
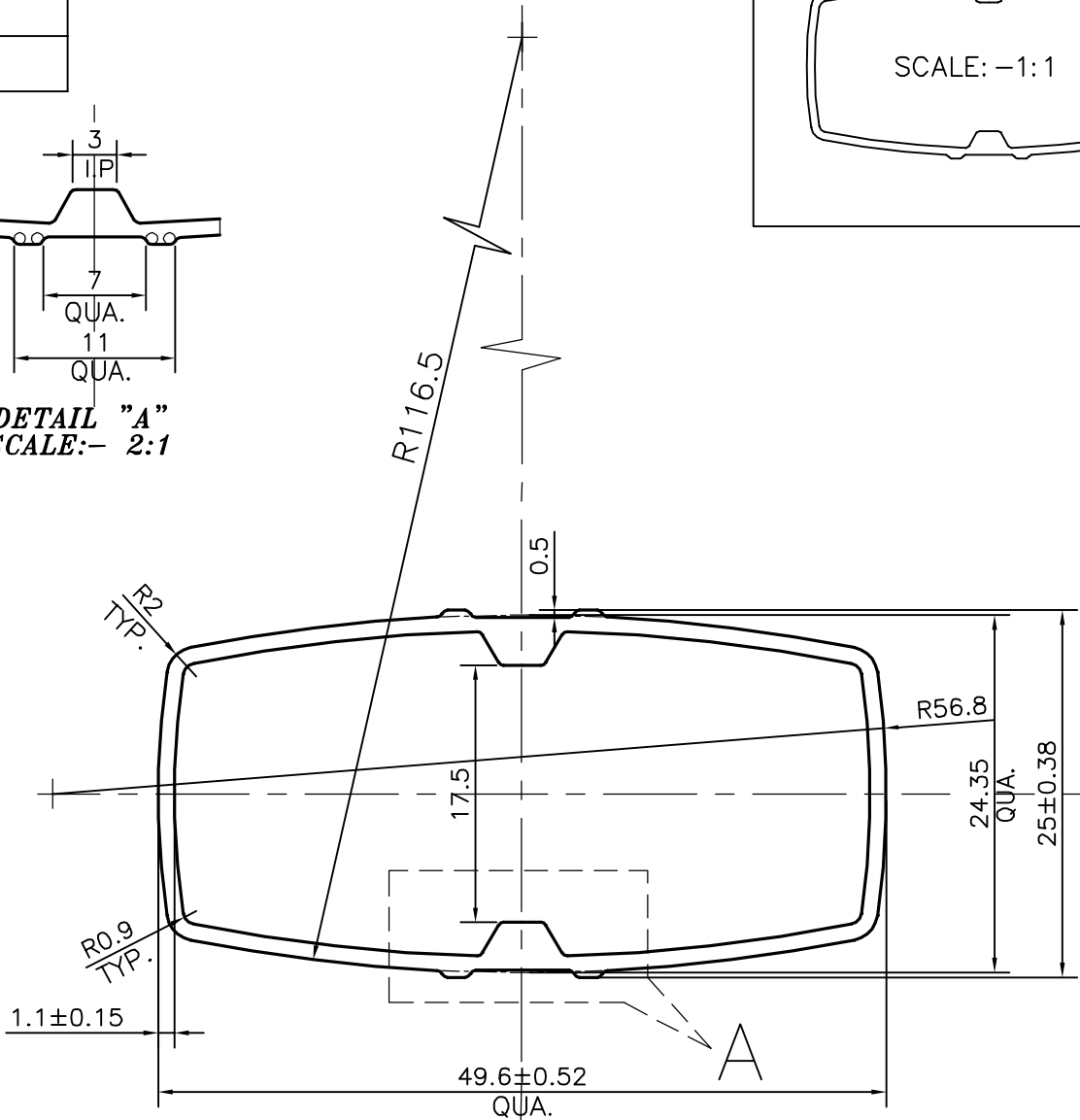


P-22938

X2991



DETAIL "A"
SCALE:- 2:1



SCALE: -2:1

WEIGHT RANGE:- NOT LESS THAN 1.95 KG/15 FEET TO 2.2 KG/15 FEET

TOLERANCES ON OVERALL DIMENSIONS OF HOLLOW SECTIONS

| | | | |
|---------------------|----------------------|----------------------|---|
| UPTO 20.0mm - ±0.30 | UPTO 80.0mm - ±0.70 | UPTO 180.0mm - ±1.27 | 1. STRAIGHTNESS=1.7mm/M 2. TWIST=1.7mm/M 3. ANGULARITY= ±2° 4. FLATNESS =0.006xWIDTH |
| UPTO 30.0mm - ±0.38 | UPTO 100.0mm - ±0.80 | UPTO 200.0mm - ±1.40 | |
| UPTO 40.0mm - ±0.45 | UPTO 120.0mm - ±0.90 | UPTO 225.0mm - ±1.52 | |
| UPTO 50.0mm - ±0.52 | UPTO 140.0mm - ±1.00 | | |
| UPTO 60.0mm - ±0.60 | UPTO 160.0mm - ±1.14 | | |



SYMBOL OF QUALITY
AN ISO 9001 COMPANY

JINDAL ALUMINIUM LTD.
BANGALORE-560073 (INDIA)

| | NAME | DATE |
|----------------------|-------------|------------|
| DRAWN | PUNITH | 08-09-2021 |
| CHECKED | | |
| APPROVED | B.NATARAJA | 18/09/2021 |
| SCALE | | 2:1 |
| AREA mm ² | | 164.738 |
| PERIMETER mm. | | 135.671 |
| WEIGHT kg/m | | 0.445 |
| DRAWING No. | SECTION No. | |
| P-22938 | - | |
| X2991 | X2991 | |

1. ALL DIMENSIONS ARE IN mm.
2. ROUND OFF ALL SHARP CORNERS WITH 0.40 mm.
3. TOLERANCES WILL BE AS PER IS:6477-1983 , UNLESS OTHERWISE SPECIFIED

| | |
|---------------------|-------------------------------|
| PARTY'S NAME | ATCO ALUMINIUM SYSTEMS ,DELHI |
| PARTY'S DRAWING No. | LIGHTER OF SECTION NO. 22049 |
| ALLOY & TEMPER | HE9 WP |
| DESCRIPTION | VENETIAN BLINDS |