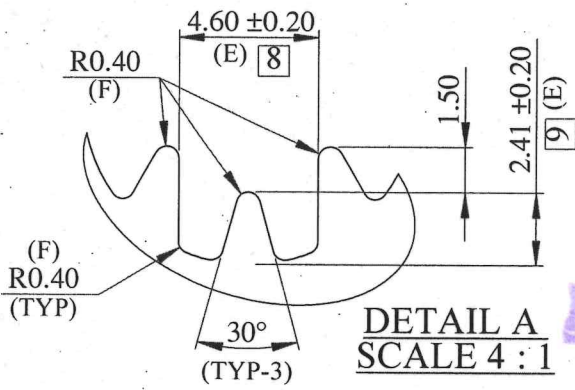
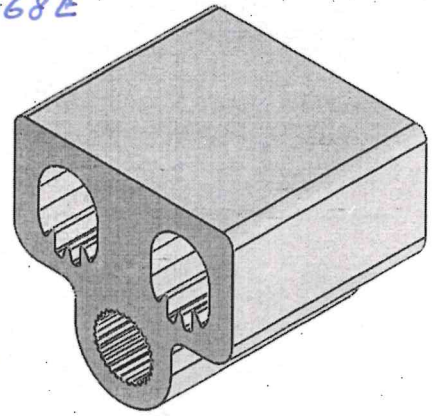


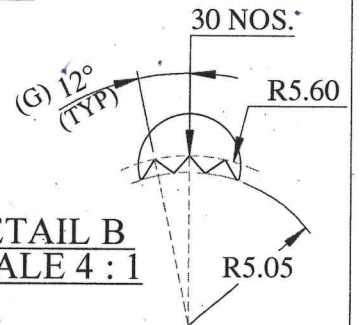
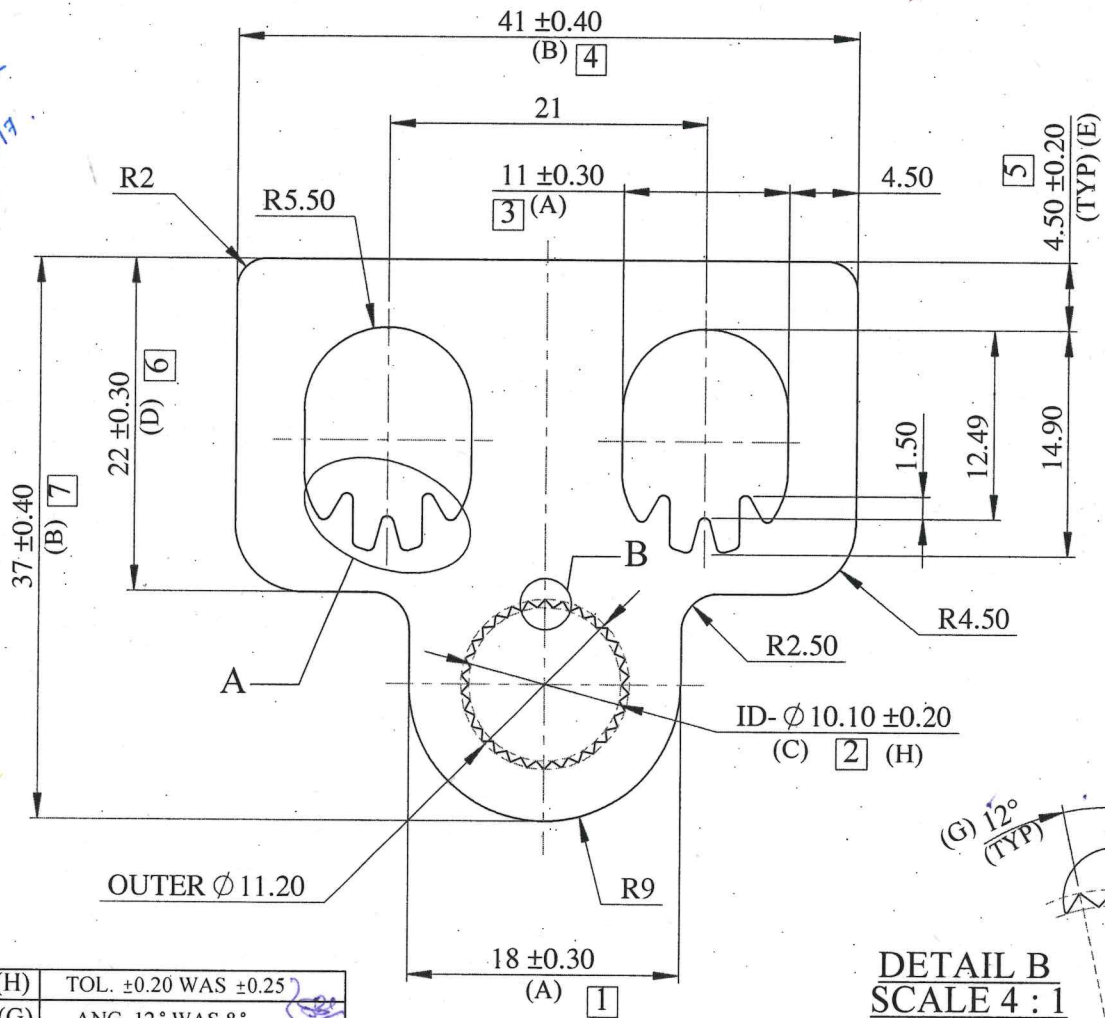
Code - RABP568E



**DETAIL A**  
SCALE 4 : 1

FOR APPROVAL

Approved  
Datta  
06.04.2017



**DETAIL B**  
SCALE 4 : 1

002	(H)	TOL. ±0.20 WAS ±0.25
	(G)	ANG. 12° WAS 8°
	AS PER PARTY DISC. DT.- 06.04.17	

**PLEASE SPECIFY THE EXPOSED SURFACE**

LOCATION:-PI-IHOLE  
ALL DIMENSION ARE IN mm.  
UNSPECIFIED CORNER RADIUS:0.40

TOL. AS PER BS EN 755-9:2008  
UNLESS SPECIFIED

TWIST = ±1/4°/300 M.M.  
FLATNESS = WIDTH X 0.005mm.  
STRAIGHTNESS = 1.50 M.M./MTR.  
ANGULARITY = ±1.5°

**INDO ALUSYS INDUSTRIES LIMITED BHIWADI RAJASTHAN - 301019**

PARTY SAMPLE & DRG.		DRAWING	PARTY NAME M/S ENSTO			REF:- AS PER EMAIL DT.- 03.01.17		
001	(F)	R0.40 WAS R0.50	DRAWN	VIVEK YADAV	06.01.17	AREA	786.88	MM <sup>2</sup>
	(D)/(E)	TOL. ±0.30 & ±0.20 WAS ±0.40 & ±0.30 Resp.	CHECKED			WEIGHT	2.124	KG/M.
	(C)	DIM. (10.1±0.25) WAS (10.2±0.35)	APPROVED			WT. RANGE	-----	Kg/12
	(A)/(B)	TOL. ±0.30 & ±0.40 WAS ±0.35 & ±0.50 Resp.	SCALE	2:1 & 4:1	DATE	ALLOY	6005-T6	
	(REF.)	AS PER EMAIL DT.- 12.01.17	CRITICAL DIM.	*		MAL NO.	16051	
REV. STATUS	REV. NO.	DESCRIPTION	SIGN DATE	PERIMETER	INT.	151.66	SEC.NO.	D-6849
A4		REVISION			EXT.	140.55		