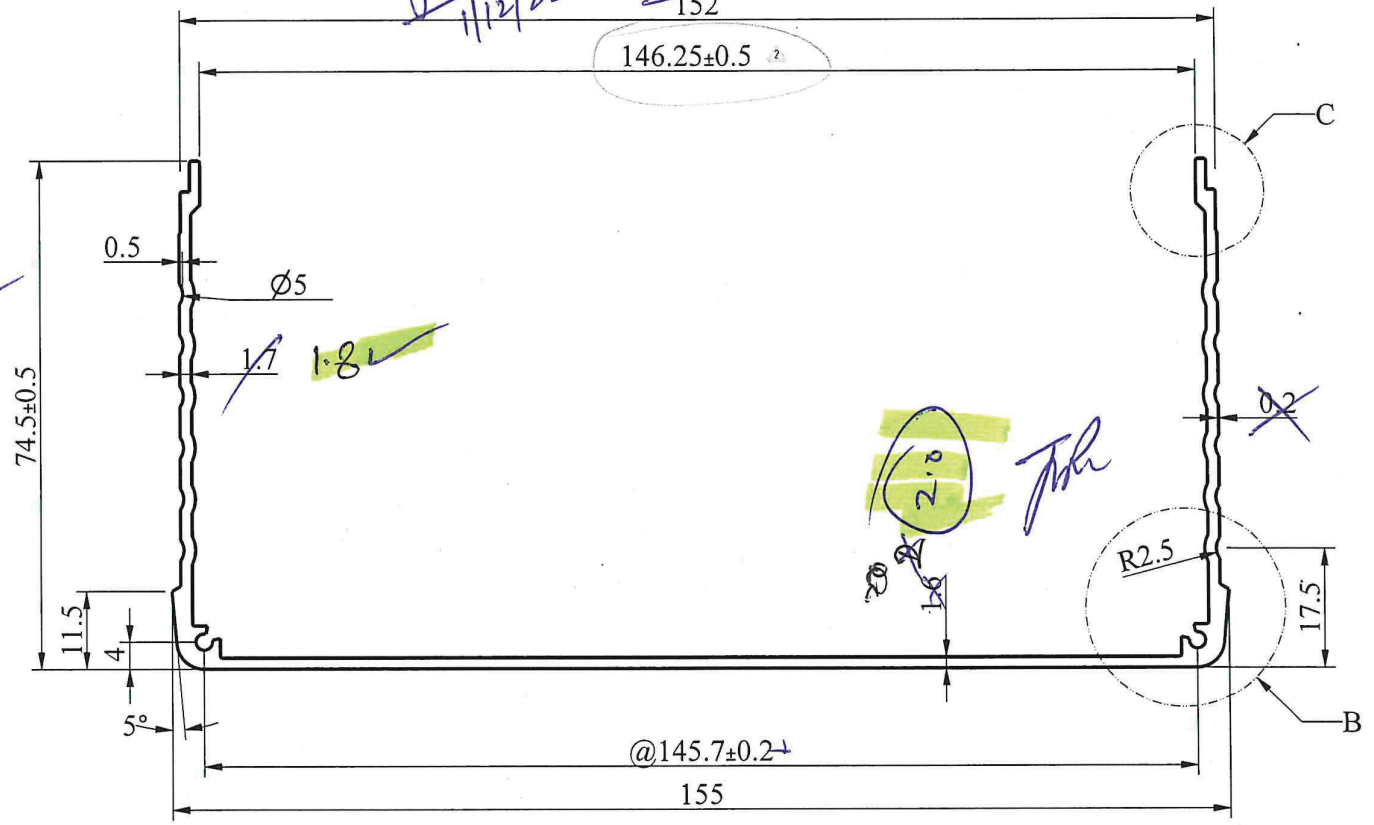
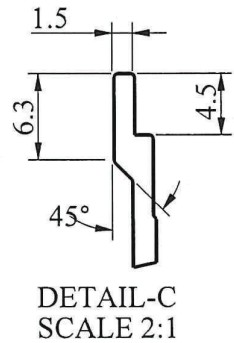
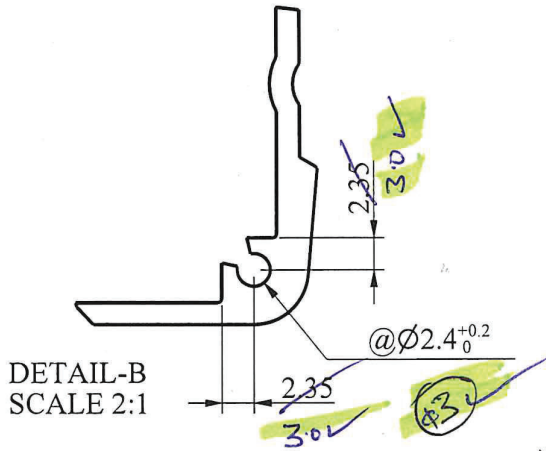


Note → Tensile strength = 215 MPa

MARK	REV. NO	DESCRIPTION	REVISED BY	DATE
1	01	SERRATION DIMENSION & CLAMPING PROFILE CHANGED	CHINTESH	25.12.2021
2	02	PROFILE CHANGED	CHINTESH	20.09.2021

Old Pathak 1/12/22
 Approved 1/12/22
 152



- NOTE:
1. ALL DIMENSION'S ARE IN mm
 2. RADIUS AT ALL CORNERS 0.2 MINIMUM
 3. CUT LENGTH TOLERANCE ±5 mm
 4. ALLOY :- 6063
 5. HARDNESS :- VICKERS 83 / BRINELL - 73 / KNOOP - 96
 6. TENSILE STRENGTH :- 241 MPa
 7. DENSITY :- 2.7 gm/cc
 8. TWIST & STRAIGHTNESS = 1.7mm / MTR
 9. FLATNESS = WIDTH x 0.008mm
 10. ANGULARITY = ±2°
 11. THE DIMENSION @ MARKED SHOULD BE TAKE CARE

SECTION AREA- 534.51 sqmm
 PART WEIGHT : 1443.1 g/M ±50

DESIGN	DRAWN	CHECKED	APPROVED	DATE	SCALE	PART MATL. / MATL. CODE	DESIGN WEIGHT	ACTUAL WEIGHT	VOLTSMAN	
CHINTESH	CHINTESH			16.12.2021	1:1	SEE NOTE	SEE NOTE	---	Voltsman Power Technologies Pvt Ltd. A5, Mangolpuri Indl Area Phase-2, New Delhi-110034	
UNSPECIFIED TOLERANCE		UNSPECIFIED DRAFT ANGLE 15°-30°		SPECIFICATION NO.		REVISION		Voltsman Power Technologies Pvt Ltd. A5, Mangolpuri Indl Area Phase-2, New Delhi-110034		
UNDER 4	±0.15	UNSPECIFIED RADIUS 0.2		SP.MS.VPT-003		01		PART NAME AL SECTION BOTTOM ALS002 E-RICKSHAW MITRA SERIES		
OVER 4 UNDER 16	±0.2	ALL DIMENSIONS ARE IN mm		DRG.NO.		VPT-CHR-ALS-002		SHEET		
OVER 16 UNDER 63	±0.3	IF IN DOUBT PLEASE ASK		PART NO.		VPT-CHR-ALS-002		01 OF 01		
OVER 63 UNDER 250	±0.5	DO NOT SCALE THE DRG.		DATE						
OVER 250	±0.8									
ANGLE	±0.5									