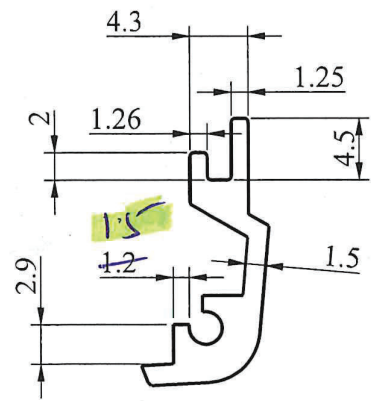


Note → Tensile strength = 215 MPa.

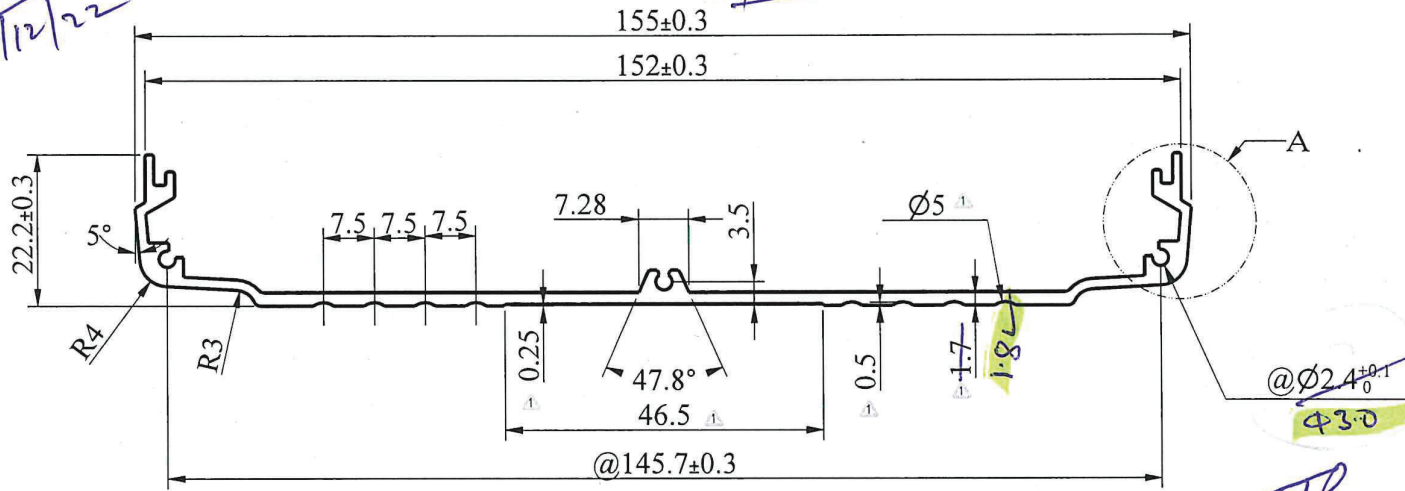
Patil
1/12/22

Asim
1/12/22

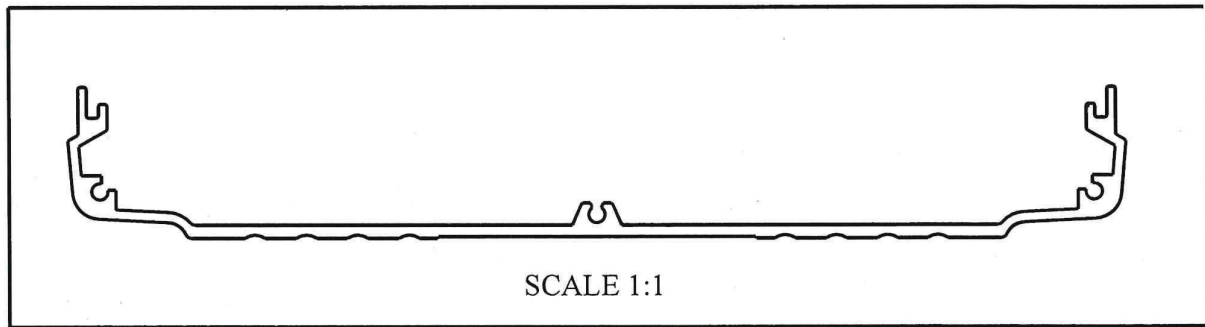
MARK	REV. NO	DESCRIPTION	REVISED BY	DATE
1	01	CLAMP PROFILE & SERRATION SIZE CHANGED	CHINTESH	16.12.2021



DETAIL -A
SCALE 2:1



FRONT VIEW
SCALE 1:1



SCALE 1:1

- NOTE:
1. ALL DIMENSION'S ARE IN mm
 2. RADIUS AT ALL CORNERS 0.2 MINIMUM
 3. CUT LENGTH TOLERANCE ±5 mm
 4. ALLOY :- 6063 ✓
 5. HARDNESS :- VICKERS 83 / BRINELL - 73 / KNOOP - 96
 6. TENSILE STRENGTH :- 241 MPa
 7. DENSITY :- 2.7 gm/cc
 8. TWIST & STRAIGHTNESS = 1.7mm / MTR ✓
 9. FLATNESS = WIDTH x 0.008mm ✓
 10. ANGULARITY = ±2° ✓
 11. THE DIMENSION @ MARKED SHOULD BE TAKE CARE

SECTION AREA- 374.99 sqmm
PART WEIGHT : 1008 g/M ±85

Area = 377.77 mm²
wt = 1.020.19 g/m

DESIGN	DRAWN	CHECKED	APPROVED	DATE	SCALE	PART MATL. / MATL. CODE	DESIGN WEIGHT	ACTUAL WEIGHT	VOLTSMAN	
CHINTESH	CHINTESH			16.12.2017	1:1	PROCESSED PP	SEE NOTE	---	Voltsman Power Technologies Pvt Ltd. A5, Mangolpuri Indl Area Phase-2, New Delhi-110034	
UNSPECIFIED TOLERANCE		UNSPECIFIED DRAFT ANGLE 15'-30'		SPECIFICATION NO.		REVISION		DRG. NO.		
UNDER 4	±0.15	UNSPECIFIED RADIUS 0.2		SP.MS.VPT-002		01		VPT-CHR-ALS-001		
OVER 4 UNDER 16	±0.2	ALL DIMENSIONS ARE IN mm		PART NAME		AL SECTION TOP ALS001		SHEET		
OVER 16 UNDER 63	±0.3	IF IN DOUBT PLEASE ASK		E-RICKSHAW MITRA SERIES		01 OF 01				
OVER 63 UNDER 250	±0.5	DO NOT SCALE THE DRG.								
OVER 250	±0.8									
ANGLE	±0.5°									