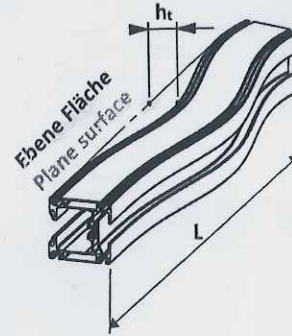
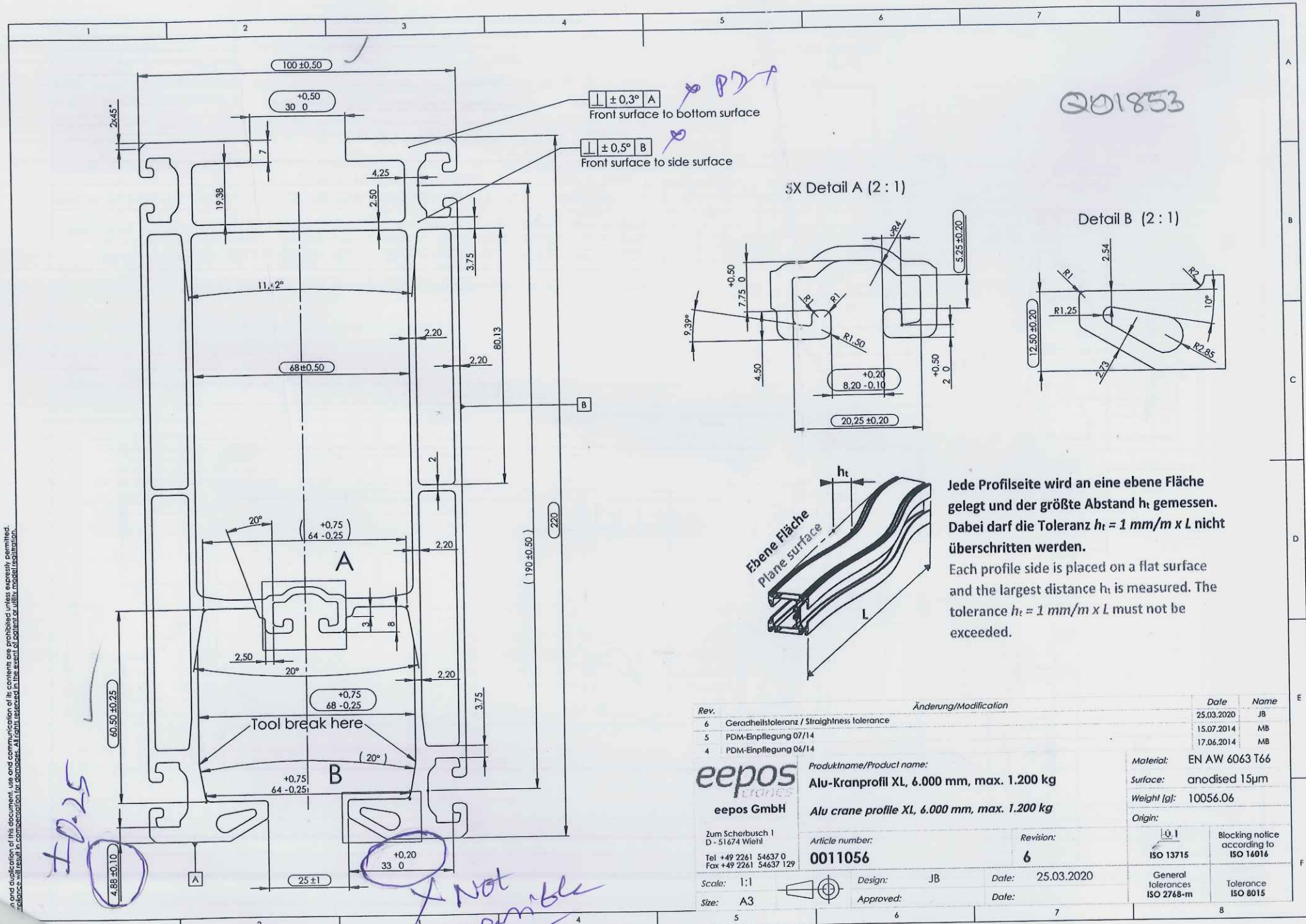


In case of duplication of this document, the user assumes responsibility of its contents and is prohibited unless expressly permitted.



Jede Profelseite wird an eine ebene Fläche gelegt und der größte Abstand h_t gemessen. Dabei darf die Toleranz $h_t = 1 \text{ mm/m} \times L$ nicht überschritten werden.
 Each profile side is placed on a flat surface and the largest distance h_t is measured. The tolerance $h_t = 1 \text{ mm/m} \times L$ must not be exceeded.

Rev.	Änderung/Modification	Date	Name
6	Ceradheitstoleranz / Straightness tolerance	25.03.2020	JB
5	PDM-Einpflegung 07/14	15.07.2014	MB
4	PDM-Einpflegung 06/14	17.06.2014	MB

Produktname/Product name:	Material:	EN AW 6063 T66
eepos Alu-Kranprofil XL, 6.000 mm, max. 1.200 kg	Surface:	anodised 15µm
eepos GmbH Alu crane profile XL, 6.000 mm, max. 1.200 kg	Weight [g]:	10056.06
Zum Scherbusch 1 D - 51674 Wiehl	Origin:	
Tel +49 2261 54637 0 Fax +49 2261 54637 129	Article number:	0011056
Scale: 1:1	Revision:	6
Size: A3	Design:	JB
	Approved:	
	Date:	25.03.2020
	Date:	
	General tolerances	ISO 2768-m
	Blocking notice according to	ISO 16016
	Tolerance	ISO 8015