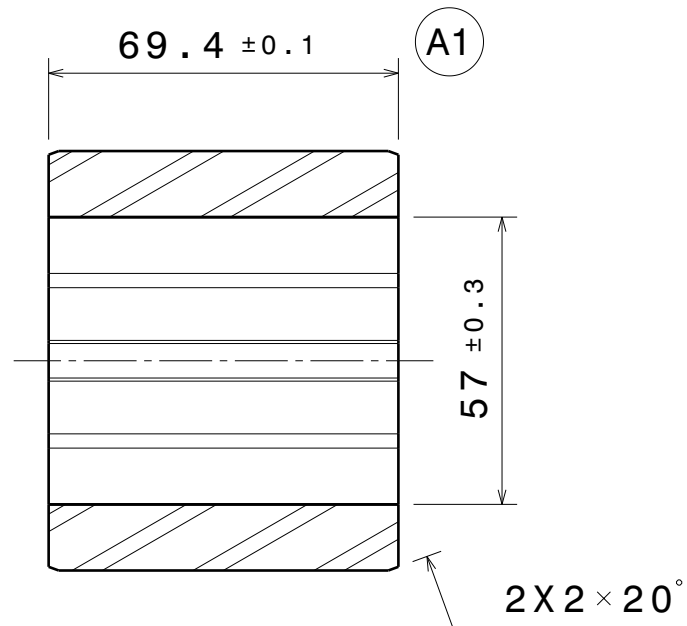
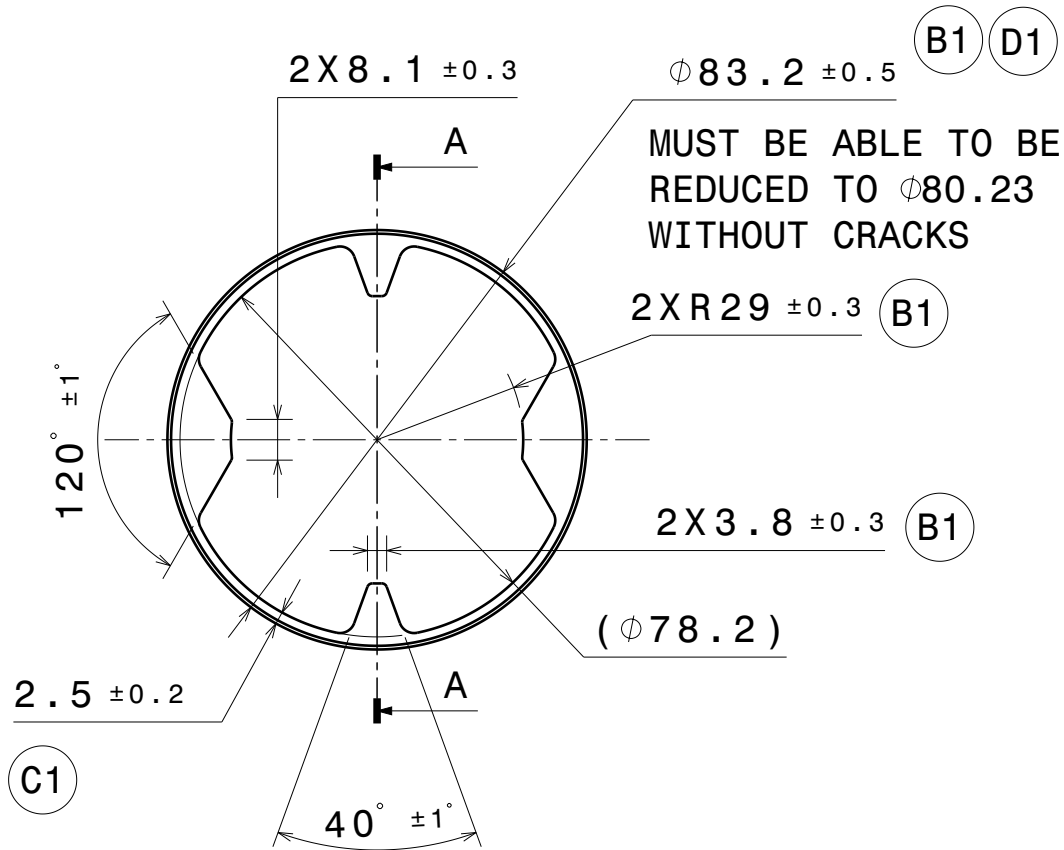


H G F E D C B A

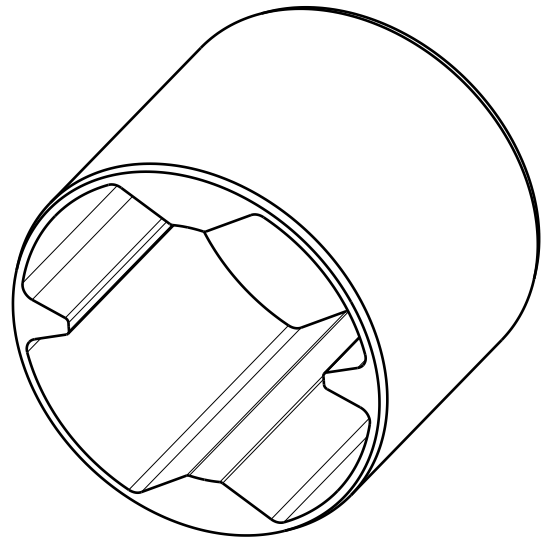
VER	PLS	DESCRIPTION	CHD BY	DATE	APD BY	ECR
A	2	INITIAL PRODUCTION RELEASE 1. WAS 70 ±0.1 2. WAS 6063-T6	RPC	24APR24	JV	1591
B	2	1. WERE ALL ±0.25 2. WAS ALUMINUM 6082-T6	RPC	22JAN25	JV	2579
C	1	1. WAS 2.0 ±0.2	RPC	03MAR25	JV	2626
D	1	1. WAS Ø83.2 ±0.3	RPC	14MAY25	JV	2815

Q03479



Section view A-A

CONTROL COPY
Issue Date :
15/05/2025
Issued By : ABHISHEK




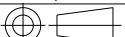
Isometric view

-0.2 EDGES acc.
DIN ISO 13715

A2

MATERIAL: ALUMINUM 6063-T6

DELIVERY CONDITION:
SURFACES TO BE FREE OF GRAPHITE,
SILICONE COMPOUNDS, MOLYBDENUM
DISULPHIDE, SULFUR AND DIRT.

DRN.BY: R.CHURCH		24APR24	<div>PROPERTY OF ANP</div> <div>THIS DRAWING IS THE SOLE PROPERTY OF ANP. IT CANNOT BE COPIED BY ANYONE WITHOUT WRITTEN PERMISSION OF ANP</div>		<div></div> <div>ANAND NVH PRODUCTS INC.</div>		
APD.BY: J.VANCE		24APR24					
CAD SYSTEM: CATIA V5		PROTECTION MARK: ISO 16015					
TOLERANCED: ISO 2768-mk ISO 8015			ISO 3302:M3 (RUBBER) DIN 16901 (PLASTIC)		TITLE:		
MASS: 0.226kg		<div><div><div></div><div>CALCULATED</div><div>- ACTUAL</div></div><div></div><div>THIRD ANGLE PROJ</div></div>		UNIT - MM SCALE - 1:1 SHEET - A3		MODEL IS MASTER FOR ALL NON-DIMENSIONED FEATURES	
CUST REFERENCE NO. XXXXX			PRODUCTION REFERENCE NO. 7270		PART NO.: U-ET01606-S12		
					D		