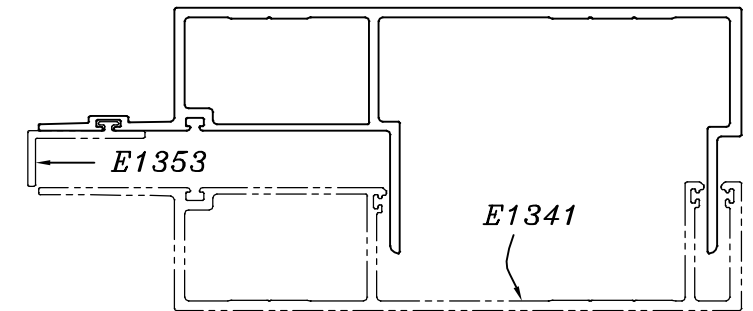
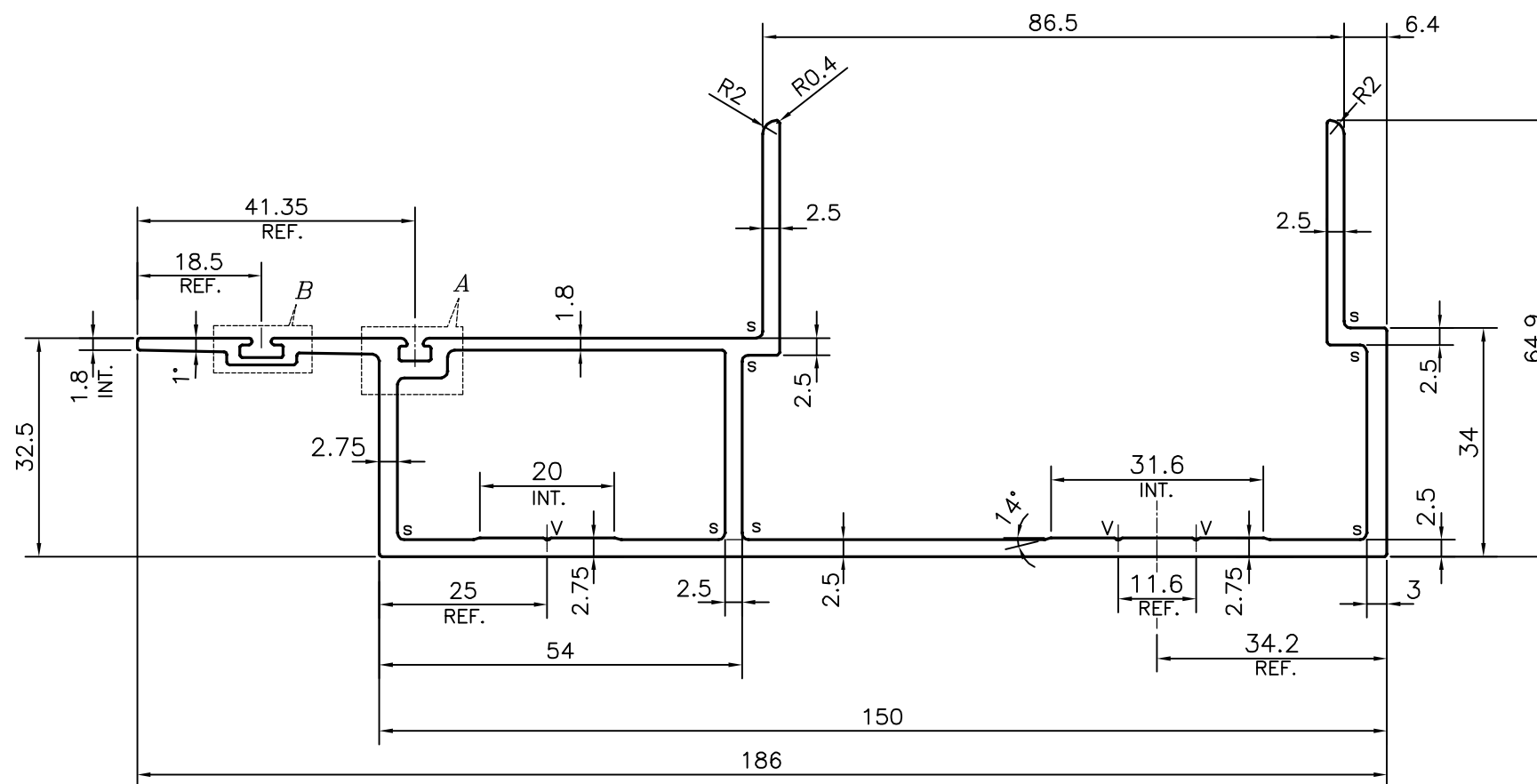


P-21100-1

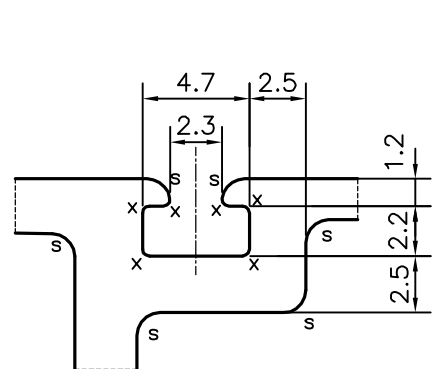
E1340



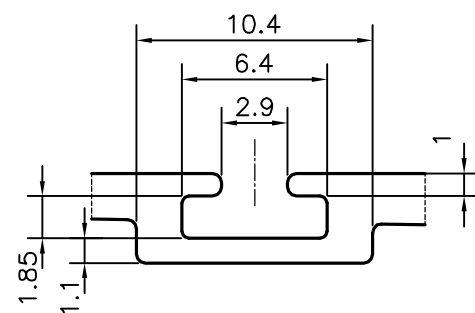
SCALE:- 0.5:1




V = VEE GROOVE 0.3x90° (3 PLACES)
 X = RADIUS 0.3 mm. (6 PLACES)
 S = RADIUS 1.0 mm. (14 PLACES)



DETAIL OF "A"
SCALE 3:1



DETAIL OF "B"
SCALE 3:1

| TOLERANCES ON OVERALL WIDTHS & WIDTHS ACROSS FLATS OF BARS, & REGULAR SECTIONS | | | | |
|---|--|----------------------|---|-------------|
| UPTO 6.40mm - ±0.20 | UPTO 32.0mm - ±0.38 | UPTO 120.0mm - ±0.85 | 1. STRAIGHTNESS=1.0mm/M 2. TWIST=1.0mm/M 3. ANGULARITY= ±1° 4. FLATNESS =0.007xWIDTH | |
| UPTO 10.0mm - ±0.23 | UPTO 50.0mm - ±0.46 | UPTO 160.0mm - ±1.02 | | |
| UPTO 12.0mm - ±0.25 | UPTO 60.0mm - ±0.53 | UPTO 200.0mm - ±1.14 | | |
| UPTO 16.0mm - ±0.28 | UPTO 80.0mm - ±0.69 | UPTO 250.0mm - ±1.40 | | |
| UPTO 25.0mm - ±0.30 | UPTO 100.0mm - ±0.75 | UPTO 300.0mm - ±1.65 | | |
|  SYMBOL OF QUALITY AN ISO 9001 COMPANY | JINDAL ALUMINIUM LTD. BANGALORE-560073 (INDIA) | | NAME | DATE |
| | | | DRAWN | PARVESH |
| 1. ALL DIMENSIONS ARE IN mm. 2. ROUND OFF ALL SHARP CORNERS WITH 0.4 mm. 3. TOLERANCES WILL BE AS PER IS:6477-1983 , UNLESS OTHERWISE SPECIFIED | | | CHECKED | |
| | | | APPROVED | B.NATARAJA |
| PARTY'S NAME ALUFIT (INDIA) PRIVATE LIMITED, BANGALORE | | | SCALE | 1:1 |
| | | | AREA mm ² | 1012.173 |
| PARTY'S DRAWING No. AS PER AUTOCAD DRAWING-AL-01 | | | PERIMETER mm. | 667.611 |
| | | | WEIGHT kg/m | 2.733 |
| ALLOY & TEMPER 6063 T6 | | | DRAWING No. | SECTION No. |
| | | | P-21100-1 | - |
| DESCRIPTION CURTAIN WALL SECTION-MALE MULLION | | | E1340 | E1340 |
| | | | | |