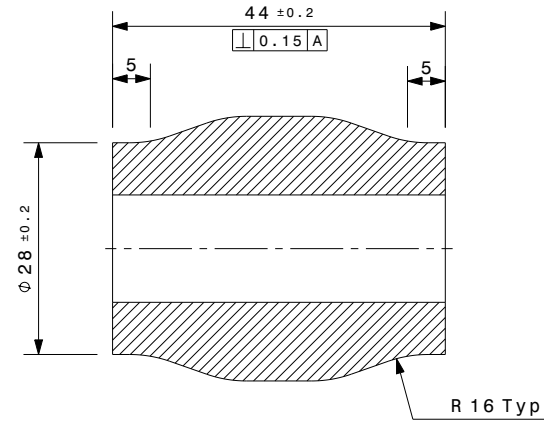
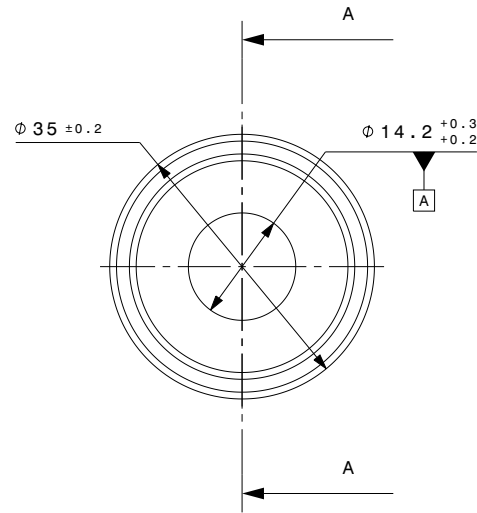


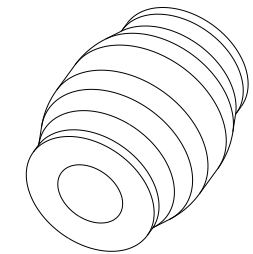
BILL OF MATERIAL

ITEM	QTY	PART NAME	PART NUMBER	MATERIAL SPEC.	MASS (Kg)	CA (in ²)	TSA (in ²)
1	--	INNER	I-CE2022296-D11	Al 6082-T6	0.078kg	6.968in ²	11.429in ²

VERSION	PLACES	DESCRIPTION	CHANGED BY	DATE	APD. BY
A	---	INITIAL RELEASE	-----	23.12.2022	S.A.



Section view A-A



Isometric view

NOTES

- * INNER CRUSH LOAD Min. 115 kN.
- * FOR UNSPECIFIED DIMENSION REFER 3D CAD DATA.
- * REMOVE ALL SHARP EDGES AND BURRS.

<input checked="" type="checkbox"/> FOR QUOTATION	DRAWN BY	MANISH KUMAR		PART NAME	INNER	 ANAND NVH PRODUCTS (P) LTD N.H.-8 SECTOR 35 GURGAON HARYANA-122001 (INDIA) PROPERTY OF ANP
<input checked="" type="checkbox"/> FOR COSTING	CHECKED BY	PANKAJ KASAR		PART NUMBER	I-CE2022296-D11	
<input type="checkbox"/> FOR DEVELOPMENT	APPROVED BY	SADHIMOOLAM		TOLERANCED: ISO 2768-mk ISO 8015 (ASC) : ANAND SPECIAL CHARACTERISTIC		
<input type="checkbox"/> FOR SERIAL PRODUCTION	CAD SYSTEM: CATIA V5	PROTECTION MARK: ISO 16016	DATE: 23.12.2022	MODEL IS MASTER FOR ALL NON-DIMENSIONED FEATURES	REFERENCE PART NO	SHEET AI SCALE NTS UNIT mm REFERENCE PART NO