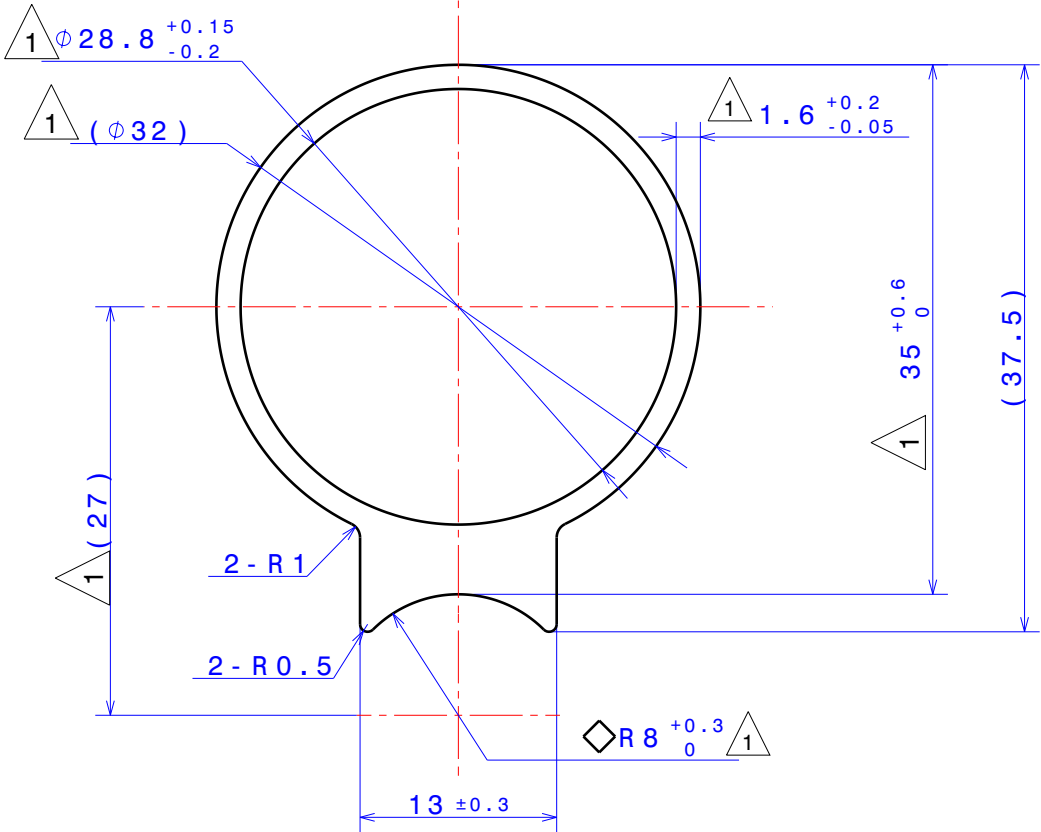


SPECIAL CHARACTERISTICS SYMBOLS	REV. NO.	ECN NO.	DATE	REVISION
◇ - FIT / FUNCTION Ⓢ - SAFETY / COMPLIANCE	1	92/21	11.05.2021	1.DIM.1.6 <sup>+0.2</sup> <sub>-0.05</sub> WAS 1.6 Min, $\phi 28.8^{+0.15}$ WAS $\phi 28.8 \pm 0.15$ AND $R 8^{+0.3}$ WAS $R 8^{+0.2}$ REF.(27) WAS $27^{+0.5}$ <sub>-0.0</sub> DIM. $35^{+0.6}$ ADDED & CRITICAL SYMBOLE ADDED IN DIM. $R 8^{+0.3}$ DIM. REF. ( $\phi 32$ ) WAS $\phi 32 \pm 0.1$ . 2.NOTE NO.7 IS ADDED.

	AUTHORISED FOR	DATE	SIGN.
<input type="checkbox"/>	CONCEPT		
<input type="checkbox"/>	PROTOTYPE		
<input checked="" type="checkbox"/>	PRELAUNCH	11.05.2021	
<input type="checkbox"/>	PRODUCTION		



CHEMICAL COMPOSITION	A3003	Si	Fe	Cu	Mn	Mg	Cr	Zn	Ti	OTHER		ALUMINIUM	
		MAX.	0.6	0.7	0.20	1.5	--	--	0.1	--	EACH	TOTAL	REMAINDER
		MIN.	--	--	0.05	1.0	--	--	--	--	--	--	
MECHANICAL PROPERTIES	H112	94 (MIN.)			34 (MIN.)			25					
TENSILE STRENGTH (MPa)				YIELD STRENGTH (MPa)				ELONGATION (%)					

- NOTE:
- PARTS MUST BE FREE FROM BURRS & SHARP EDGES.
  - TWIST=1/2° /300mm.
  - STRAIGHTNESS = ±2.5mm/Mtr.
  - ANGULARITY : ±2°.
  - PRODUCT SHOULD COMPLIES WITH EUROPEAN ENVIRONMENTAL REGULATIONS DIRECTIVE 2000/53/EC.
  - LENGTH : 2700<sup>+10</sup><sub>-0</sub>.
  - MAXIMUM WEIGHT 0.605Kg/Mtr.

**MASTER COPY**  
WHEN IN RED

SCALE 2:1		UNITS mm		MATERIAL A3003/A3103-H112				Pranav Vikas (India) Limited												
+	0 TO 3	3 TO 6	6 TO 30	30 TO 120	120 TO 315	315 TO 1000	1000 TO 2000	RIGHT ANGLE	OTHER ANGLE	ASSY. NAME :- CONDENSER ASSY										
-										PART NAME :- EXTRUSION RD TANK										
A	0.05	0.1	0.15	0.2	0.3	0.4	0.7	1.0	1.5	DRG. NO. :- RMGEN000202					REF. NO. :- ---					
Ⓟ	0.2	0.3	0.4	0.5	0.7	1.0	1.6	2.0	3.0	MODEL NAME :- GENERAL					SH 01 OF 01					
C	0.4	0.5	0.6	0.8	1.2	1.6	3.0			Drawn By	SS	Checked By	YS	Checked By	PG	REV. NO:- 01				
D	0.5	0.8	1.0	1.2	1.8	2.8	4.0			Checked By					DATE :- 24.04.2017					
E	1.0	2.0	2.5	3.5	5.0	7.0	10.0			Checked By					INITIAL RELEASE					
F	10.0			15.0	20.0	30.0														