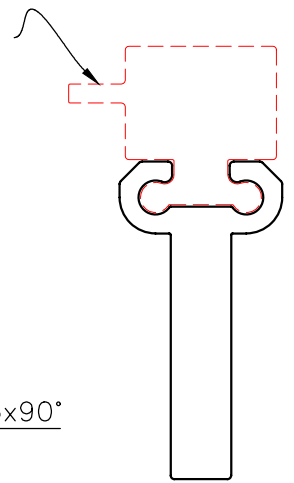
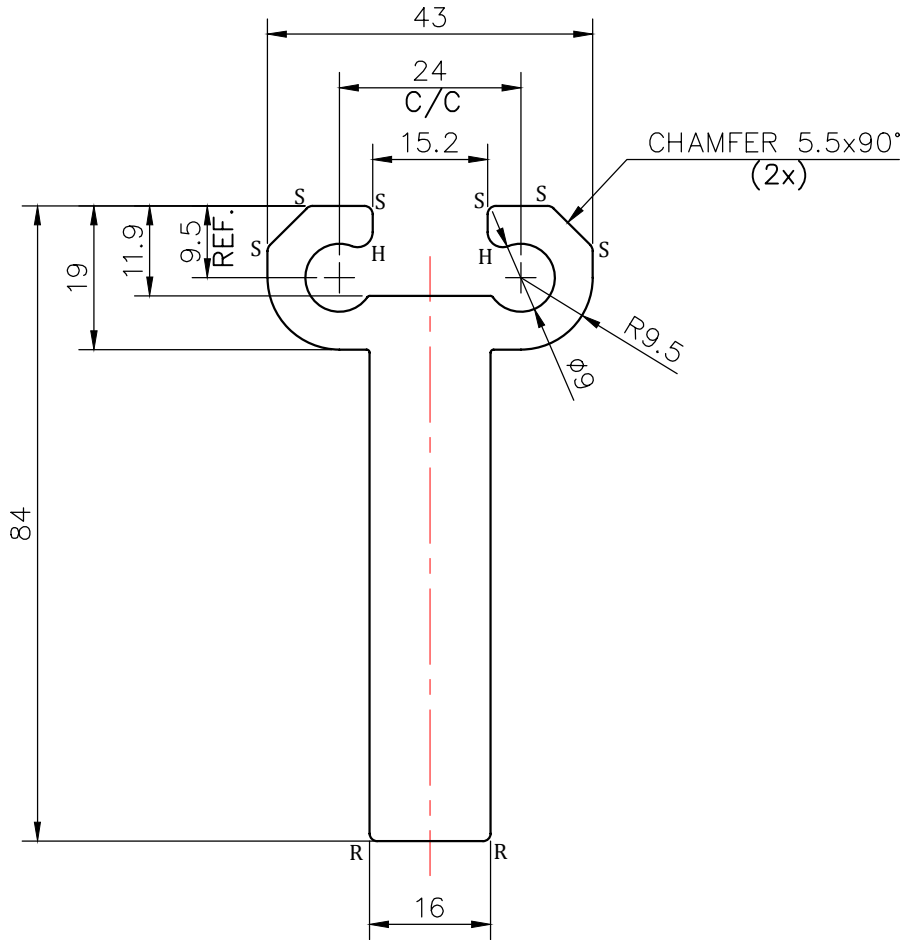


P-JAL-B-279

P-JAL-B-280



MATCHING
SCALE 1:2

NOTE:-

- R= 1.0 RADIUS (2 PLACES)**
- S= 1.1 RADIUS (6 PLACES)**
- H= 2.0 RADIUS (2 PLACES)**

1. STRAIGHTNESS= 1.7mm/M
2. TWIST= 1.7mm/M
3. ANGULARITY= ±2°
4. FLATNESS= 0.007xWIDTH

UNCONTROLLED COPY

(Q00765)

1) THE WELDING LINE IN THE EXPOSED SURFACE OF PROFILE IS UNAVOIDABLE. 2) PLEASE SPECIFY IMPORTANT SIZES. 3) PLEASE SPECIFY IF THIS PROFILE MATCHES WITH OTHER PROFILES. 4) PLEASE SPECIFY EXPOSED SURFACE. OTHER WISE CONSIDERED AS NO EXPOSED SURFACE. 5) FINISH :- MILL FINISH / ANODIZING / POWDER COATING



SYMBOL OF QUALITY
AN ISO 9001 COMPANY

JINDAL ALUMINIUM LTD.
BHIWADI-301019 (INDIA)

	NAME	DATE
DRAWN	ASHUTOSH	25-07-2023
CHECKED		
APPROVED		
SCALE		1:1
AREA mm ²		1471.62
PERIMETER mm.		293.65
WEIGHT kg/m		3.973
DRAWING No.		SECTION No.
P-JAL-B-279		

1. ALL DIMENSIONS ARE IN mm.	
2. ROUND OFF ALL SHARP CORNERS WITH 0.40 mm.	
3. TOLERANCES WILL BE AS PER BS:EN-755-9 , UNLESS OTHERWISE SPECIFIED	
PARTY'S NAME	K.S.V INFRABUILD, GREATER NOIDA
PARTY'S DRAWING No.	AS PER DRAWING-ALUM. HOOK BRACKET ELEMENT (POPULUS TOWER)
ALLOY & TEMPER	6063 T6
DESCRIPTION	CURTAIN WALL SECTION