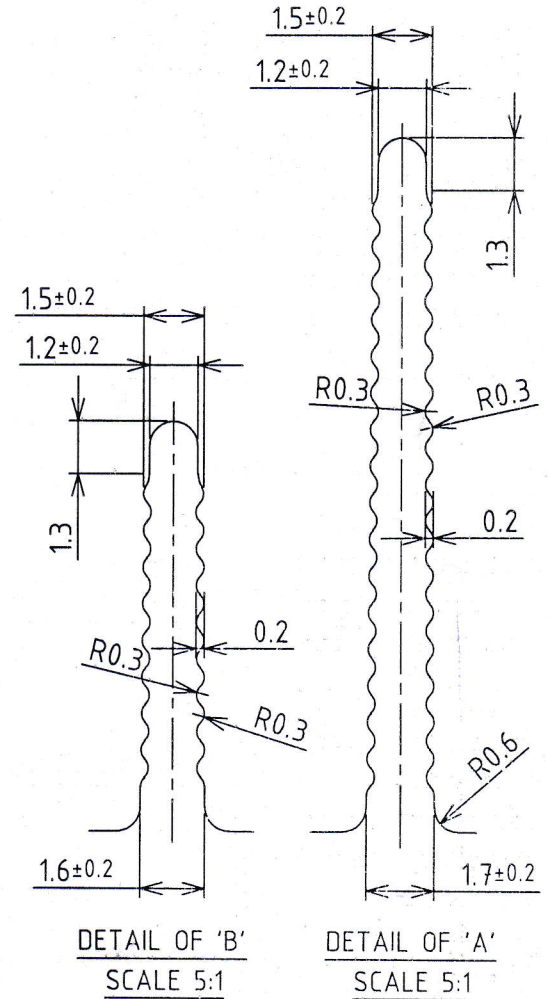
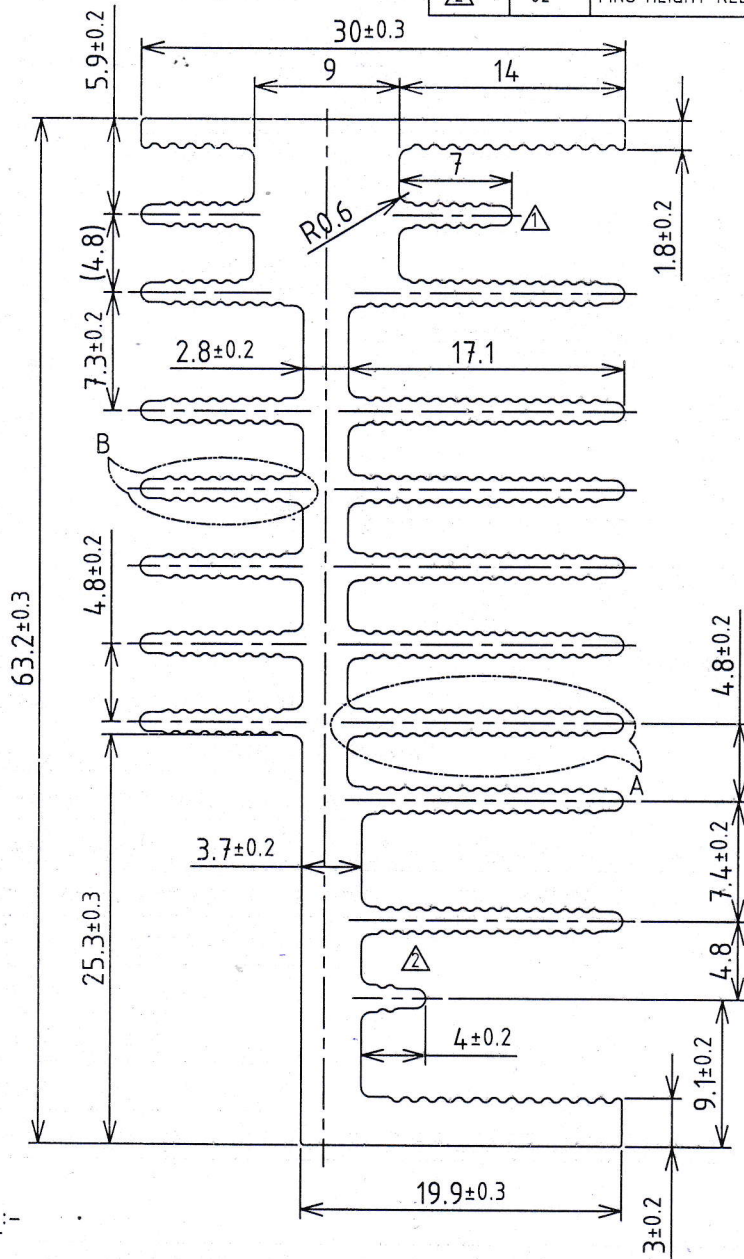


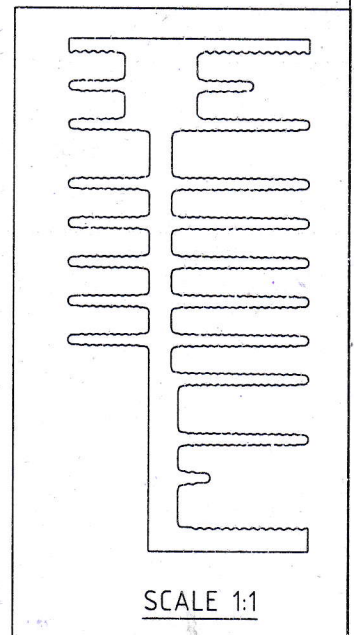
MARK	REV. NO	DESCRIPTION	REVISED BY	DATE
△	01	FINS HEIGHT REDUCE & WEIGHT REDUCE	R.ANIL	31.08.2021
△	02	FINS HEIGHT REDUCE FROM 16.2MM TO 4MM & WEIGHT REDUCE	ANKIT	21.01.2022



NOTE :-

1. ALL DIMENSION'S ARE IN mm
2. RADIUS AT ALL CORNERS 0.2 MINIMUM
3. ALUMINIUM EXTRUDED SECTION
4. ALLOY :- 6063T5 (Al-97.5,Fe-0.35,Mg-0.45-0.9,Cu-0.1,Cr-0.1,Si-0.2-0.6,Ti-0.1,Zn-0.1)
5. HARDNESS :- VICKERS 83 / BRINELL - 73 / KNOOP - 96
6. TENSILE STRENGTH :- 241 MPa
7. DENSITY :- 2.7 gm/cc
8. AREA :- 634.8 Sq.mm △ △
9. WEIGHT :- 1714 ±150gm /M
10. THE DIMENSION @ MARKED SHOULD BE CONTROLLED CAREFULLY

PROVISIONAL



SCALE 1:1

DESIGN	DRAWN	CHECKED	APPROVED	DATE	SCALE	PART MATL.	PART CODE	PART WEIGHT
R.ANIL	SHALIN	R.ANIL	M.CHAWALA	22.01.2021	2:1	SEE NOTE	778-002-0051	SEE NOTE
UNSPECIFIED TOLERANCE						SPECIFICATION .NO.		INTERNATIONAL PVT. LTD H-57, UDYOG NAGAR, PEERA GARHI NEW DELHI-41
UNDER 4	±0.15		UNSPECIFIED DRAFT ANGLE 15'-30'		SP.MS -MTK-1471			
OVER 4 UNDER 16	±0.2		UNSPECIFIED RADIUS 0.2		PART NAME. HS MTK 1471		DRG.NO. MTK-UPS-ALS-045	
OVER 16 UNDER 63	±0.3		ALL DIMENSIONS ARE IN mm		ALUMINIUM SECTION-R2			
OVER 63 UNDER 250	±0.5		IF IN DOUBT PLEASE ASK		FORMAT NO. MCO/PSP/7.37/01-FR/01		SHEET 01 OF 01	
OVER 250	±0.8		DO NOT SCALE THE DRG.		ANGLE ±0.5°			

Handwritten signatures and dates:
 5/7/22
 27/1/22