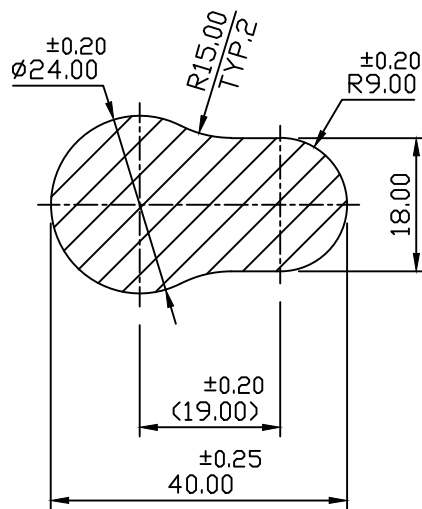


REVISION STATUS		
REV. NO.	DATE	REVISIONARY
00	11.11.2020	> New Counter Drawing Drawn
01	13.11.2020	> Length 40.00±0.25 was 40.00±0.30
		> Ø24.00±0.20 was Ø24.00±0.25
		> R 9.00±0.20 was R 9.00±0.25

EXCLUSIVE SECTION

X	XX	DRAW / TOOL / 1
	✓	REVISION- 02 / 10.03.99



DETAILED SECTION DRAWING
(SCALE - 1 : 1)

TOLERANCE AS PER BEST POSSIBLE

CEL CENTURY EXTRUSIONS LTD. KHARAGPUR, W.B.

CUST.	M/s - SWASTIKA AUTOMETICS, FARIDABAD				DFR NO.	102	
CUST DRG. / SAMPLE	(PL-FC1J0K5MBA-00)		AREA	731.10	MM ²	DRN/DATE	SOUMIK 11.11.2020
	SEC TYPE	S	WEIGHT	1.974	KG/M	CHKD/DATE	A. K. JENA
	CONT. SIZE	7"	WT. RANGE	-		APPD/DATE	A. K. JENA
	NO. OF CAV.	01	PERIMETER	EXT-	104.93	A. K. JENA	
	EXT- RATIO	37		INT-	-		
01/13.11.2020	SIGNATURE	DIE-FACTOR	53	C. C. D	40.00	SCALE	1 : 1
		ALLOY-TEMPER	6061 T6	CEL DRG.NO.	I-31922R1	CEL SEC.NO.	18661
		ALL DIMENSIONS ARE IN MM.					A4