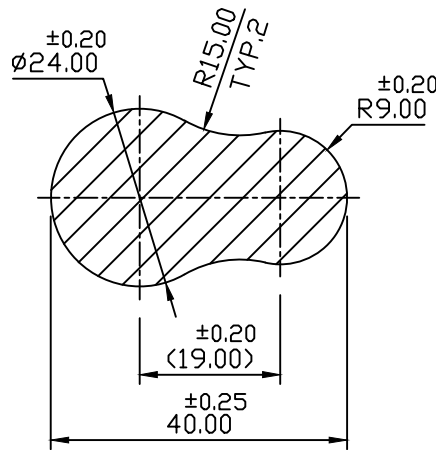


REVISION STATUS		
REV. NO.	DATE	REVISIONARY
00	06.11.2020	> New Counter Drawing Drawn
01	13.11.2020	> Length 40.00±0.25 was 40.00±0.30
		> Ø24.00±0.20 was Ø24.00±0.25
		> R 9.00±0.20 was R 9.00±0.25

EXCLUSIVE SECTION

X	XX	DRAW / TOOL / 1
	✓	REVISION- 02 / 10.03.99



DETAILED SECTION DRAWING
(SCALE - 1 : 1)

TOLERANCE AS PER BEST POSSIBLE

CEL CENTURY EXTRUSIONS LTD. KHARAGPUR, W.B.

CUST.	M/s - SWASTIKA AUTOMETICS, FARIDABAD				DFR NO.	98		
CUST DRG. / SAMPLE	(24X18 FLANGE COMPRESSOR)	AREA	721.77 MM ²		DRN/DATE	SOUMIK 06.11.2020		
	SEC TYPE	S	WEIGHT	1.949 KG/M		CHKD/DATE	A. K. JENA	
	CONT. SIZE	7"	WT. RANGE	-		APPD/DATE	A. K. JENA	
	NO. OF CAV.	01	PERIMETER	EXT-	105.35 MM			
01/13.11.2020		EXT- RATIO	37	INT-	- MM			
REV NO. / DATE	SIGNATURE	DIE-FACTOR	54	C. C. D	40.00 MM		SCALE	1 : 1
		ALLOY-TEMPER	6061 T6	CEL DRG.NO.	I-31905R1	CEL SEC.NO.	18660	A4
		ALL DIMENSIONS ARE IN MM.						