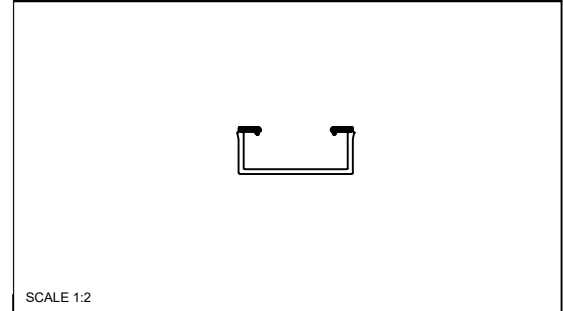
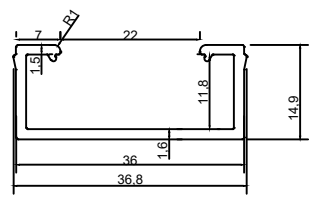
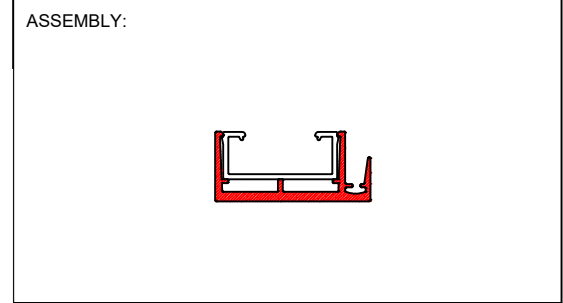


FORMAT NO:	PDWPL/FRM/DWG/AED/R0
MOC:	AL 6063
GRADE:	T6
CCD:	39 MM
AREA:	118 MM ²
PERIMETER:	151 MM
WEIGHT/M	.3 KG
FINISH	MILL
STD. SIZE	5800 MM



SCALE 1:2

NOTE:

1. ALL DIMENSIONS IN MM UNLESS SPECIFIED
2. UNSPECIFIED RADII : 0.3MM
3. TOLERANCES AS PER DIN EN 122020-2 : 2008 UNLESS SPECIFIED
4. CRITICAL DIMENSIONS ENCIRCLED

EXPOSED SURFACE	
HIDDEN SURFACE	
SEMI-EXPOSED SURFACE	

REV. NO.	REV. DATE	REMARKS
R0	20/01/2022	ORIGINAL DRAWING



DESCRIPTION:	GLAZING CLIP 22MM	SCALE:	1:1
PART CODE:	PF0072	STATUS:	FOR FEASIBILITY
DRAWN BY:	MONI	REVISION NO:	R0
CHECKED BY:	-	DRAWING NO:	PDWPL/DWG/AED/0072
APPROVED BY:	-	DATE:	20/01/2022

SIGN/STAMP