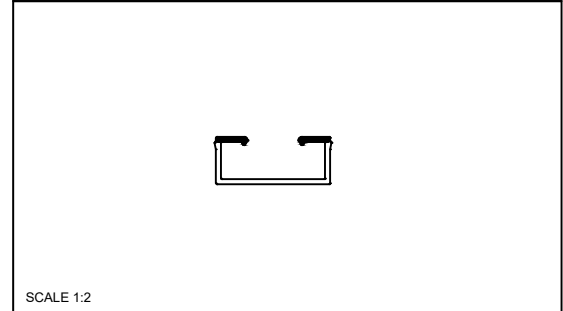
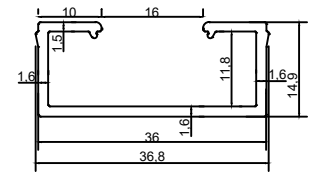
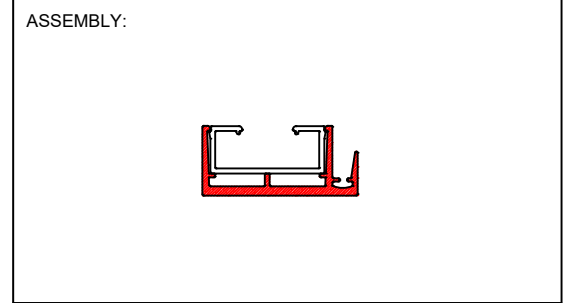


| | |
|------------|----------------------|
| FORMAT NO: | PDWPL/FRM/DWG/AED/R0 |
| MOC: | AL 6063 |
| GRADE: | T6 |
| CCD: | 39 MM |
| AREA: | 127 MM ² |
| PERIMETER: | 163 MM |
| WEIGHT/M: | .34 KG |
| FINISH: | MILL |
| STD. SIZE: | 5800 MM |



SCALE 1:2

NOTE:

1. ALL DIMENSIONS IN MM UNLESS SPECIFIED
2. UNSPECIFIED RADII : 0.3MM
3. TOLERANCES AS PER DIN EN 122020-2 : 2008 UNLESS SPECIFIED
4. CRITICAL DIMENSIONS ENCIRCLED

| | |
|----------------------|--|
| EXPOSED SURFACE | |
| HIDDEN SURFACE | |
| SEMI-EXPOSED SURFACE | |

| REV. NO. | REV. DATE | REMARKS |
|----------|------------|------------------|
| R0 | 20/01/2022 | ORIGINAL DRAWING |
| | | |
| | | |

| | | | | |
|--------------|-------------------|--------------|--------------------|------------|
| DESCRIPTION: | GLAZING CLIP 16MM | SCALE: | 1:1 | SIGN/STAMP |
| PART CODE: | PF0071 | STATUS: | FOR FEASIBILITY | |
| DRAWN BY: | MONI | REVISION NO: | R0 | |
| CHECKED BY: | - | DRAWING NO: | PDWPL/DWG/AED/0071 | |
| APPROVED BY: | - | DATE: | 20/01/2022 | |

