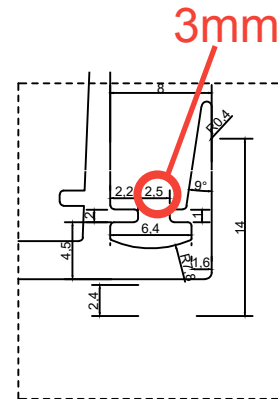
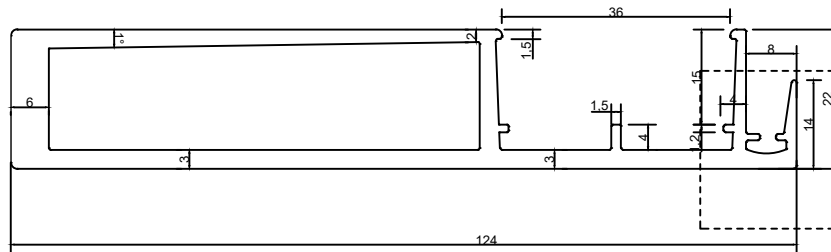


PROPOSED DRAWING

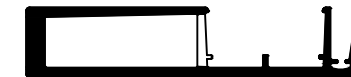
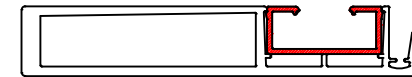
Q00355



FORMAT NO: PDWPL/FRM/DWG/AED/R0

MOC:	AL 6063
GRADE:	T6
CCD:	126 MM
AREA:	773 MM ²
PERIMETER:	370 MM
WEIGHT/M	2.1 KG
FINISH	MILL
STD. SIZE	5800 MM

ASSEMBLY:



SCALE 1:2

NOTE:

1. ALL DIMENSIONS IN MM UNLESS SPECIFIED
2. UNSPECIFIED RADII : 0.3MM
3. TOLERANCES AS PER DIN EN 122020-2 : 2008 UNLESS SPECIFIED
4. CRITICAL DIMENSIONS ENCIRCLED

EXPOSED SURFACE	
HIDDEN SURFACE	
SEMI-EXPOSED SURFACE	

REV. NO.	REV. DATE	REMARKS
R0	20/01/2022	ORIGINAL DRAWING



DESCRIPTION:	REINFORCED INTERLOCK V2	SCALE:	1:1	SIGN/STAMP
PART CODE:	PF0068	STATUS:	FOR FEASIBILITY	
DRAWN BY:	MONI	REVISION NO:	R0	
CHECKED BY:	-	DRAWING NO:	PDWPL/DWG/AED/0068	
APPROVED BY:	-	DATE:	20/01/2022	