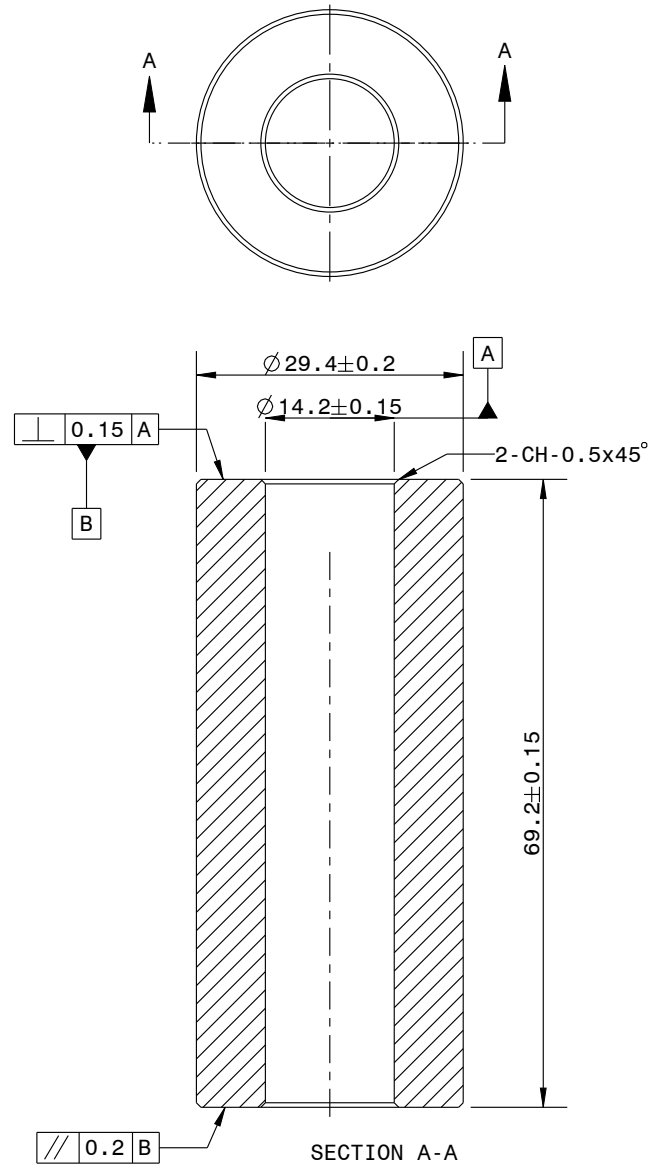


BILL OF MATERIAL							
ITEM	QTY	PART NAME	PART NUMBER	MATERIAL	TSA (In ²)	CA (In ²)	MASS (Kg.)
1	1	INNER	S-CB0898-200-D11	ALUMINIUM ASTM B209 6061-T6 OR EQUIVALENT MIN. YIELD 240 Mpa	16.18	10	0.097

VERSION	PLACES	DESCRIPTION	CHANGED BY	DATE	APD. BY
A		INITIAL RELEASE		19.07.23	S.ADHIMOOLAM



CRUSH TEST:
 F1=60kN FM=120 kN (FM= MAXIMUM CLAMP LOAD)

- 1)APPLY AN AXIAL LOAD OF 'F1' kN AT A RATE OF 2mm/min. THIS INDICATES INITIAL HEIGHT h1.
- 2)CONTINUE WITH THE APPLICATION OF THE AXIAL LOAD AT A RATE OF 2mm/min UNTILL 'FM' kN IS ACHIEVED.
- 3)CHECK THE HEIGHT OF INNER AFTER FM LOAD, hm.
- 4)MAX ALLOWANCE PERMANANT SET $\Delta L=(hm-h1)$ IS 0.16% OF THE INITIAL LENGTH.

<input checked="" type="checkbox"/> FOR QUOTATION <input type="checkbox"/> PROPOSED <input type="checkbox"/> FOR DEVELOPMENT <input type="checkbox"/> FOR SERIAL PRODUCTION	DRAWN BY	ANIL	<i>Anil</i>	PART NAME	INNER	<p>ANAND NVH PRODUCTS (P) LTD. N.H-8 SECTOR-35 GURGAON HARYANA 122001 (INDIA) PROPERTY OF ANP <small>THIS DRAWING IS SOLE PROPERTY OF ANP. IT SHOULD NOT BE COPIED BY ANYONE WITHOUT WRITTEN PERMISSION OF ANP</small></p>	
	CHECKED BY	AMIT CHAWLA	<i>Amit Chawla</i>		PART NUMBER		S-CB0898-200-D11
APPROVED BY	S.ADHIMOOLAM	<i>S. Adhimoolam</i>	CAD SYSTEM:-	Creo 6.0			PROTECTION MARK:-
MASS:-	●CALCULATED ○ACTUAL	DATE:-	MODEL IS MASTER FOR ALL NON-DIMENSIONAL FEATURE		SHEET A4 SCALE NTS UNIT mm REFERENCE PART NO.		