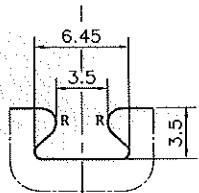
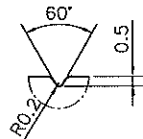


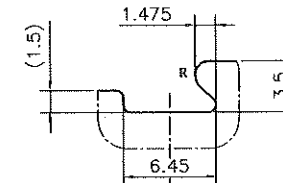
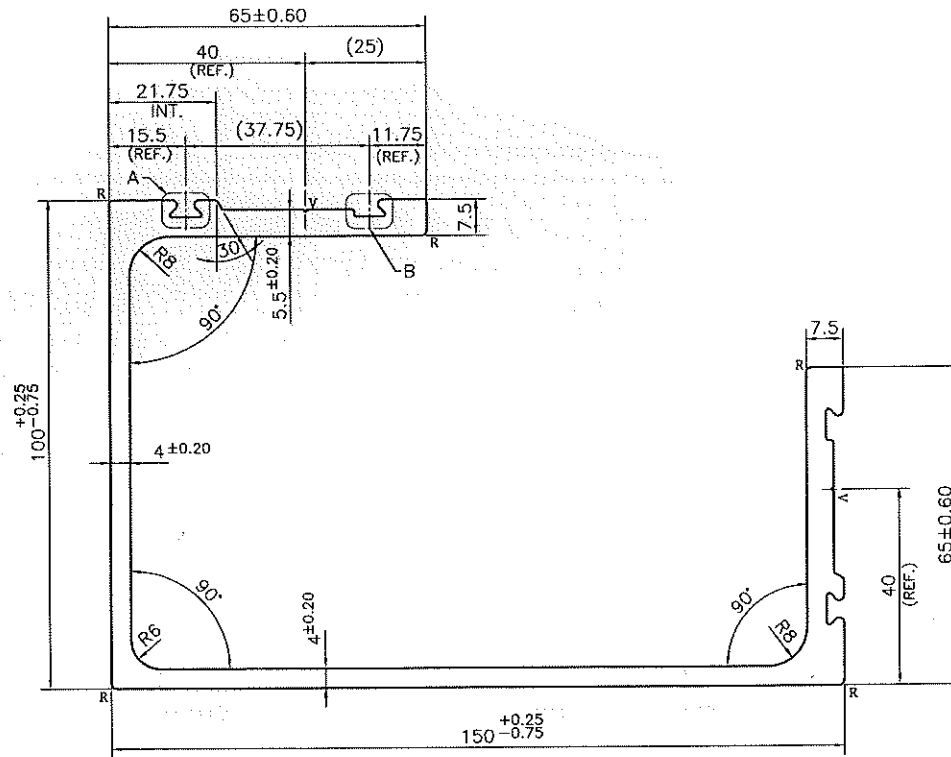
P-JAL-B-581-1



DETAIL A  
SCALE 3:1



DETAIL V  
SCALE 4:1



DETAIL B  
SCALE 3:1



14 June 2024

NOTE:-

- ☞ ROUND OFF ALL SHARP CORNERS WITH 0.50 mm.
- ☞ FE:- NOT MORE THAN 0.4%, MG:- 0.8 TO 1.2%
- ☞ HARDNESS :- 58HRB
- ☞ UTS :- 280 TO 300 MIN MPA
- ☞ SOME DIMENSIONS AND REFERENCES ARE DIFFERENT IN CAD & PDF DRAWING PLEASE CHECK ALL DIMENSIONS AND PLEASE SPECIFY IF THIS PROFILE MATCHES WITH OTHER PROFILES.

NOTE:-

- R= 1.0 RADIUS (11 PLACES)
- V= 0.5x60° V-GROOVE (2 PLACES)

1. STRAIGHTNESS= 1.0mm/M
2. TWIST= 1.0mm/M
3. ANGULARITY= ±1°
4. FLATNESS= ±0.5mm

150x100x4 001983

UNCONTROLLED COPY

1) THE WELDING LINE IN THE EXPOSED SURFACE OF PROFILE IS UNAVOIDABLE. 2) PLEASE SPECIFY IMPORTANT SIZES. 3) PLEASE SPECIFY IF THIS PROFILE MATCHES WITH OTHER PROFILES. 4) PLEASE SPECIFY EXPOSED SURFACE, OTHERWISE CONSIDERED AS NO EXPOSED SURFACE. 5) FINISH :-  MILL FINISH /  ANODIZING /  POWDER COATING

 SYMBOL OF QUALITY AN ISO 9001 COMPANY	<b>JINDAL ALUMINIUM LTD.</b> BHIWADI-301019 (INDIA)		NAME	DATE
	DRAWN	ASHUTOSH	11-06-2024	
	CHECKED			
			APPROVED	
1. ALL DIMENSIONS ARE IN mm. 2. ROUND OFF ALL SHARP CORNERS WITH 0.50 mm. 3. TOLERANCES WILL BE AS PER EN 12020-2, UNLESS OTHERWISE SPECIFIED			SCALE	1:1
			AREA mm <sup>2</sup>	1748.977
			PERIMETER mm.	766.56
			WEIGHT kg/m	4.722
PARTY'S NAME	KNEST MANUFACTURERS LLP, PUNE		DRAWING No.	SECTION No.
PARTY'S DRAWING No.	AS PER DRAWING		P-JAL-B-581-1	
ALLOY & TEMPER	6061 T6	PRODUCT CODE:-029		
		HSN CODE:- 76042990		
DESCRIPTION	FORM WORK SECTION- 150 IC			