

The technical drawing shows a cross-section of a U-channel cover. The main body has a width of 7.2 mm and a height of 33 mm. The top flange has a thickness of 1.5 mm and a width of 6 mm. The bottom flange has a thickness of 1.5 mm and a width of 6 mm. The side walls have a thickness of 1.5 mm. The top flange features rounded corners with radii R0.5 and R0.3. The bottom flange has a fillet with radius R1. A dimension of 4.3 mm indicates the distance from the centerline of the channel to the inner edge of the bottom flange. A dimension of 1.96 mm indicates the distance from the centerline to the outer edge of the bottom flange. A dimension of 4.5 mm indicates the height of the bottom flange. A dimension of 2.5 mm indicates the thickness of the top flange. An angle of 80° is shown between the top flange and the side wall. A dimension of 1.5 mm indicates the thickness of the side wall. A dimension of 3 mm indicates the thickness of the top flange. A dimension of 6 mm indicates the width of the top flange. A dimension of 7.2 mm indicates the width of the main body. A dimension of 33 mm indicates the height of the main body. A dimension of 1.5 mm indicates the thickness of the bottom flange. A dimension of 6 mm indicates the width of the bottom flange. A dimension of 4.5 mm indicates the height of the bottom flange. A dimension of 4.3 mm indicates the distance from the centerline to the inner edge of the bottom flange. A dimension of 1.96 mm indicates the distance from the centerline to the outer edge of the bottom flange. A dimension of 2.5 mm indicates the thickness of the top flange. An angle of 80° is shown between the top flange and the side wall. A dimension of 1.5 mm indicates the thickness of the side wall. A dimension of 3 mm indicates the thickness of the top flange. A dimension of 6 mm indicates the width of the top flange.

**Q03602**

MATERIAL IS 6060 GRADE ALUMINIUM EXTRUSION

AVAILABLE IS 5 FINISHES

ANTHRACITE GREY RAL 7016 TEXTURED 60 TO 70% GLOSS  
LIGHT GREY RAL 7035 TEXTURED 60 TO 70% GLOSS  
OLIVE YELLOW RAL 1020 TEXTURED 60 TO 70% GLOSS  
BRASS DROWN RAL 8025 TEXTURED 60 TO 70% GLOSS  
JET BLACK RAL 9005 TEXTURED 60 TO 70% GLOSS

DESCRIPTION	CODE
COVER FOR U CHANNEL ANTHRACITE GREY	CU21000050AG
COVER FOR U CHANNEL LIGHT GREY	CU21000050LG
COVER FOR U CHANNEL OLIVE YELLOW	CU21000050OL
COVER FOR U CHANNEL BRASS BROWN	CU21000050BR
COVER FOR U CHANNEL JET BLACK	CU21000050BL

UNLESS OTHERWISE SPECIFIED:  
DIMENSIONS ARE IN MILLIMETERS  
SURFACE FINISH:  
TOLERANCES:  
LINEAR:  
ANGULAR:

FINISH:

DEBURR AND BREAK SHARP EDGES

DO NOT SCALE DRAWING

REVISION

**SAMIRIKA EXPORTS**

TITLE:  
**COVER FOR U CHANNEL**

DWG NO.

A3

SCALE:1:20

SHEET 1 OF 1

WEIGHT:

MATERIAL:  
**ALUMINIUM**

DATE  
20/05/2025

SIGNATURE

NAME  
RACHIT

DRAWN

CHK'D

APPV'D

MFG

Q.A

The technical drawing shows a cross-section of a U-channel cover. The main body has a width of 7.2mm and a height of 33mm. The top flange has a thickness of 1.5mm and a width of 6mm. The bottom flange has a thickness of 1.5mm and a width of 6mm. The side walls have a thickness of 1.5mm. The top flange features rounded corners with radii R0.5 and R0.3. The bottom flange has a fillet with radius R1. A 80-degree angle is indicated at the junction of the top flange and the side wall. A dimension of 4.3mm is shown for the distance from the centerline to the inner edge of the bottom flange. A dimension of 1.96mm is shown for the distance from the centerline to the outer edge of the bottom flange. A dimension of 4.5mm is shown for the height of the bottom flange. A dimension of 1.5mm is shown for the thickness of the bottom flange. A dimension of 2100mm is shown for the length of the cover.

**Q03602**

MATERIAL IS 6060 GRADE ALUMINIUM EXTRUSION

AVAILABLE IS 5 FINISHES

ANTHRACITE GREY RAL 7016 TEXTURED 60 TO 70% GLOSS  
LIGHT GREY RAL 7035 TEXTURED 60 TO 70% GLOSS  
OLIVE YELLOW RAL 1020 TEXTURED 60 TO 70% GLOSS  
BRASS DROWN RAL 8025 TEXTURED 60 TO 70% GLOSS  
JET BLACK RAL 9005 TEXTURED 60 TO 70% GLOSS

DESCRIPTION	CODE
COVER FOR U CHANNEL ANTHRACITE GREY	CU21000050AG
COVER FOR U CHANNEL LIGHT GREY	CU21000050LG
COVER FOR U CHANNEL OLIVE YELLOW	CU21000050OL
COVER FOR U CHANNEL BRASS BROWN	CU21000050BR
COVER FOR U CHANNEL JET BLACK	CU21000050BL

UNLESS OTHERWISE SPECIFIED:  
DIMENSIONS ARE IN MILLIMETERS  
SURFACE FINISH:  
TOLERANCES:  
LINEAR:  
ANGULAR:

FINISH:

DEBURR AND BREAK SHARP EDGES

DO NOT SCALE DRAWING

REVISION

**SAMIRIKA EXPORTS**

TITLE: COVER FOR U CHANNEL

DWG NO. A3

SCALE: 1:20

SHEET 1 OF 1

NAME: RACHIT

SIGNATURE:

DATE: 20/05/2025

MATERIAL: ALUMINIUM

WEIGHT:

**Q03602**

MATERIAL IS 6060 GRADE ALUMINIUM EXTRUSION

AVAILABLE IS 5 FINISHES

ANTHRACITE GREY RAL 7016 TEXTURED 60 TO 70% GLOSS  
LIGHT GREY RAL 7035 TEXTURED 60 TO 70% GLOSS  
OLIVE YELLOW RAL 1020 TEXTURED 60 TO 70% GLOSS  
BRASS DROWN RAL 8025 TEXTURED 60 TO 70% GLOSS  
JET BLACK RAL 9005 TEXTURED 60 TO 70% GLOSS

DESCRIPTION	CODE
COVER FOR U CHANNEL ANTHRACITE GREY	CU21000050AG
COVER FOR U CHANNEL LIGHT GREY	CU21000050LG
COVER FOR U CHANNEL OLIVE YELLOW	CU21000050OL
COVER FOR U CHANNEL BRASS BROWN	CU21000050BR
COVER FOR U CHANNEL JET BLACK	CU21000050BL

UNLESS OTHERWISE SPECIFIED:  
DIMENSIONS ARE IN MILLIMETERS  
SURFACE FINISH:  
TOLERANCES:  
LINEAR:  
ANGULAR:

FINISH:

DEBURR AND BREAK SHARP EDGES

DO NOT SCALE DRAWING

REVISION

**SAMIRIKA EXPORTS**

TITLE:  
**COVER FOR U CHANNEL**

DWG NO.

A3

SCALE:1:20

SHEET 1 OF 1

WEIGHT:

MATERIAL:  
**ALUMINIUM**

DATE  
20/05/2025

SIGNATURE

NAME  
RACHIT

DRAWN

CHK'D

APPV'D

MFG

Q.A

The technical drawing shows a side view of a U-channel cover. The main body has a height of 33mm and a width of 7.2mm. The top flange has a thickness of 1.5mm and a width of 6mm. The bottom flange has a thickness of 1.5mm and a width of 6mm. The inner channel has a depth of 4.3mm. The outer edges are rounded with R0.5 fillets. The bottom edge has a 4.5mm wide base. A vertical dimension of 2100mm is shown on the right side. A red label 'Q03602' is at the top left.

MATERIAL IS 6060 GRADE ALUMINIUM EXTRUSION

AVAILABLE IS 5 FINISHES

ANTHRACITE GREY RAL 7016 TEXTURED 60 TO 70% GLOSS  
LIGHT GREY RAL 7035 TEXTURED 60 TO 70% GLOSS  
OLIVE YELLOW RAL 1020 TEXTURED 60 TO 70% GLOSS  
BRASS DROWN RAL 8025 TEXTURED 60 TO 70% GLOSS  
JET BLACK RAL 9005 TEXTURED 60 TO 70% GLOSS

DESCRIPTION	CODE
COVER FOR U CHANNEL ANTHRACITE GREY	CU21000050AG
COVER FOR U CHANNEL LIGHT GREY	CU21000050LG
COVER FOR U CHANNEL OLIVE YELLOW	CU21000050OL
COVER FOR U CHANNEL BRASS BROWN	CU21000050BR
COVER FOR U CHANNEL JET BLACK	CU21000050BL

UNLESS OTHERWISE SPECIFIED:  
DIMENSIONS ARE IN MILLIMETERS  
SURFACE FINISH:  
TOLERANCES:  
LINEAR:  
ANGULAR:

FINISH:

DEBURR AND BREAK SHARP EDGES

DO NOT SCALE DRAWING

REVISION

SAMIRIKA EXPORTS

TITLE: COVER FOR U CHANNEL

DWG NO.

A3

SCALE: 1:20

SHEET 1 OF 1

WEIGHT:

MATERIAL: ALUMINIUM

DATE: 20/05/2025

SIGNATURE

NAME: RACHIT

DRAWN

CHK'D

APPV'D

MFG

Q.A

The technical drawing shows a cross-section of a U-channel cover. The main body has a width of 7.2mm and a height of 33mm. The top flange has a thickness of 1.5mm and a width of 6mm. The bottom flange has a thickness of 1.5mm and a width of 6mm. The side walls have a thickness of 1.5mm. The top flange features rounded corners with radii R0.5 and R0.3. The bottom flange has a fillet with radius R1. A 80-degree angle is indicated at the junction of the top flange and the side wall. A dimension of 4.3mm is shown from the centerline of the channel to the inner edge of the bottom flange. A dimension of 1.96mm is shown from the centerline to the outer edge of the bottom flange. A dimension of 4.5mm is shown from the bottom edge of the side wall to the bottom edge of the bottom flange. A dimension of 1.5mm is shown from the centerline to the inner edge of the bottom flange.

**Q03602**

MATERIAL IS 6060 GRADE ALUMINIUM EXTRUSION

AVAILABLE IS 5 FINISHES

ANTHRACITE GREY RAL 7016 TEXTURED 60 TO 70% GLOSS  
LIGHT GREY RAL 7035 TEXTURED 60 TO 70% GLOSS  
OLIVE YELLOW RAL 1020 TEXTURED 60 TO 70% GLOSS  
BRASS DROWN RAL 8025 TEXTURED 60 TO 70% GLOSS  
JET BLACK RAL 9005 TEXTURED 60 TO 70% GLOSS

DESCRIPTION	CODE
COVER FOR U CHANNEL ANTHRACITE GREY	CU21000050AG
COVER FOR U CHANNEL LIGHT GREY	CU21000050LG
COVER FOR U CHANNEL OLIVE YELLOW	CU21000050OL
COVER FOR U CHANNEL BRASS BROWN	CU21000050BR
COVER FOR U CHANNEL JET BLACK	CU21000050BL

UNLESS OTHERWISE SPECIFIED:  
DIMENSIONS ARE IN MILLIMETERS  
SURFACE FINISH:  
TOLERANCES:  
LINEAR:  
ANGULAR:

FINISH:

DEBURR AND BREAK SHARP EDGES

DO NOT SCALE DRAWING

REVISION

**SAMIRIKA EXPORTS**

TITLE: COVER FOR U CHANNEL

DWG NO.

A3

SCALE: 1:20

SHEET 1 OF 1

WEIGHT:

MATERIAL: ALUMINIUM

DATE: 20/05/2025

SIGNATURE

NAME: RACHIT

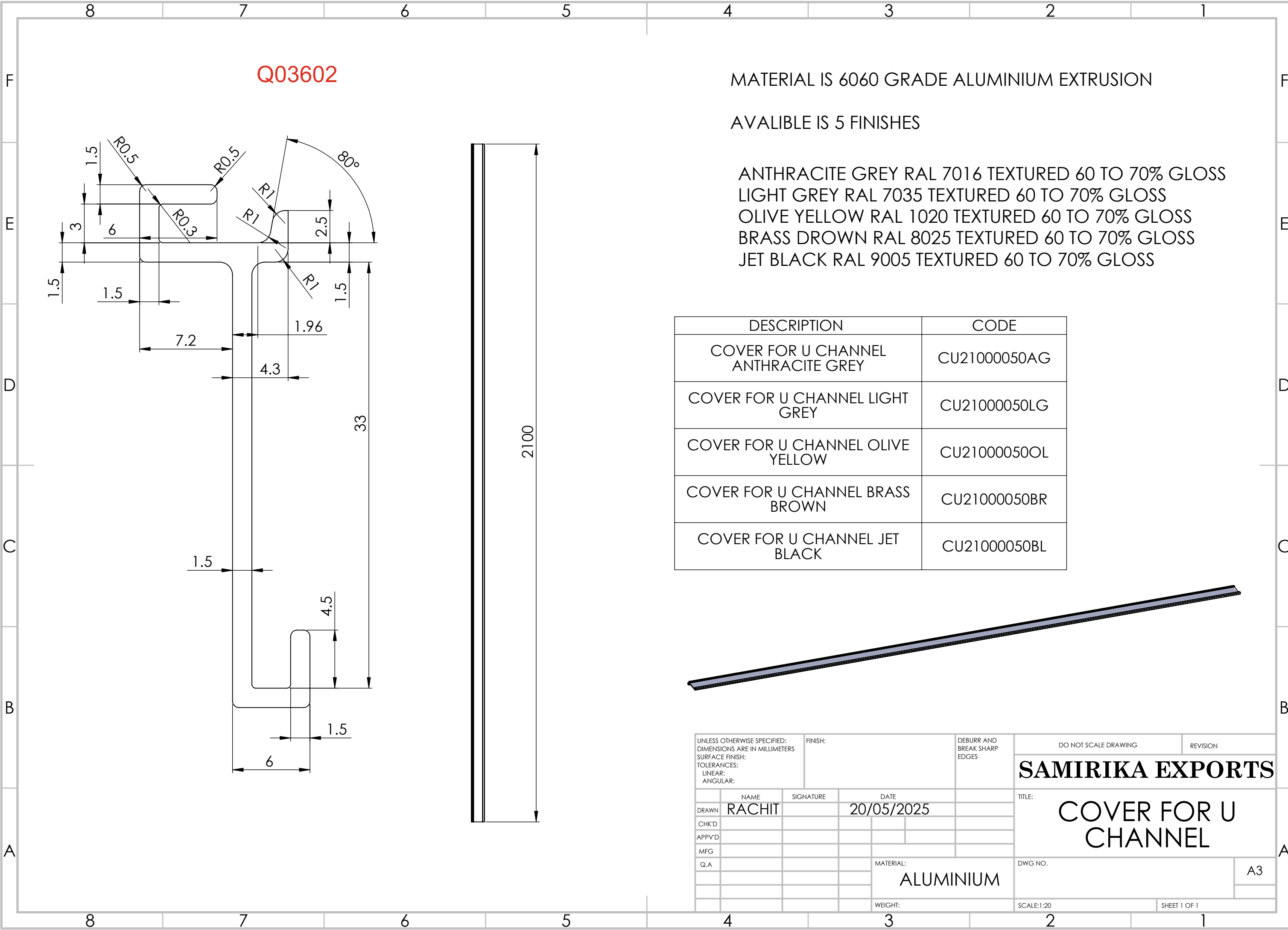
DRAWN

CHK'D

APPV'D

MFG

Q.A



**Q03602**

MATERIAL IS 6060 GRADE ALUMINIUM EXTRUSION

AVAILABLE IS 5 FINISHES

ANTHRACITE GREY RAL 7016 TEXTURED 60 TO 70% GLOSS  
LIGHT GREY RAL 7035 TEXTURED 60 TO 70% GLOSS  
OLIVE YELLOW RAL 1020 TEXTURED 60 TO 70% GLOSS  
BRASS DROWN RAL 8025 TEXTURED 60 TO 70% GLOSS  
JET BLACK RAL 9005 TEXTURED 60 TO 70% GLOSS

DESCRIPTION	CODE
COVER FOR U CHANNEL ANTHRACITE GREY	CU21000050AG
COVER FOR U CHANNEL LIGHT GREY	CU21000050LG
COVER FOR U CHANNEL OLIVE YELLOW	CU21000050OL
COVER FOR U CHANNEL BRASS BROWN	CU21000050BR
COVER FOR U CHANNEL JET BLACK	CU21000050BL

UNLESS OTHERWISE SPECIFIED:  
DIMENSIONS ARE IN MILLIMETERS  
SURFACE FINISH:  
TOLERANCES:  
LINEAR:  
ANGULAR:

FINISH:

DEBURR AND BREAK SHARP EDGES

DO NOT SCALE DRAWING

REVISION

**SAMIRIKA EXPORTS**

TITLE:  
**COVER FOR U CHANNEL**

DWG NO.

A3

SCALE:1:20

SHEET 1 OF 1

NAME: RACHIT

SIGNATURE:

DATE: 20/05/2025

MATERIAL: ALUMINIUM

WEIGHT: