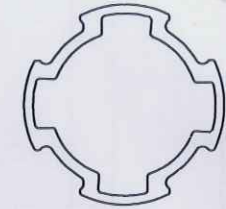
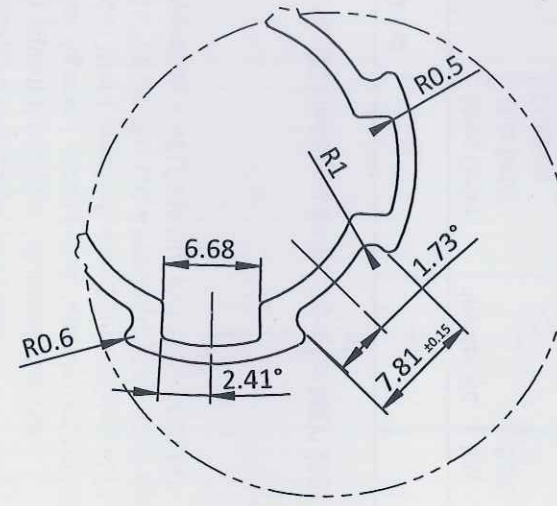
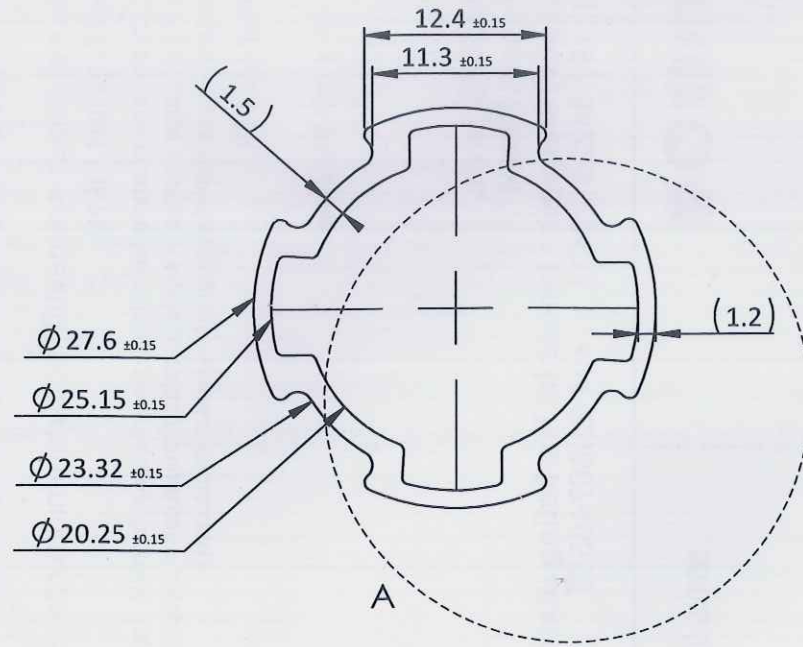
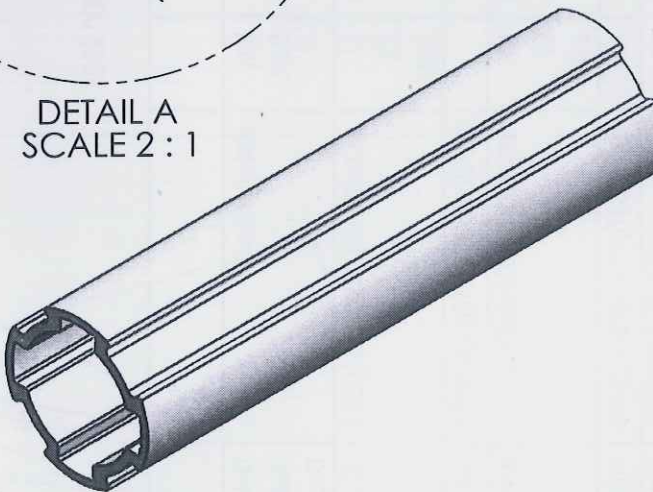


Proprietary & Confidential:  
The information contained in this drawing is the sole property  
of Phoenix Mecano (I) Pvt.Ltd. Any reproduction in part or as whole  
without the written permission is prohibited.



SCALE 1:1



DETAIL A  
SCALE 2:1

**Note - :**

- Required Hardness - 90 HRE.
- FLATNESS  $\pm 0.6$  mm.
- STRAIGHTNESS 0.7 mm/m.
- TWIST 0.7mm/m
- PARALLALITY  $\pm 0.2$  mm.
- ANGULARITY  $\pm 2^\circ$ .
- UNSPECIFIED EDGE & FILLET RADII 0.3 mm.
- UNSPECIFIED WALL THK TOLERANCE  $\pm 0.15$  mm.

**Anodic coating:** according to DIN 17611 class 25( 25microns).  
Surface: Quality E6 C0 (Mat pickled and anodised natural)color.  
Anodic Hardness : 250 HV.

15296

GOROSY

**Weight - 379 gms/m**

| Rev | Modification   | Name | Date       |
|-----|--|------|------------|
| a   | Dimensions modifies as per G.S.ACE and tolerance as per RY | GK   | 05.02.2020 |

| Name     | Sign. | Date       |
|----------|-------|------------|
| Drwn. GK |       | 06.11.2019 |
| Chkd. TJ |       | 06.11.2019 |
| Appr. TJ |       | 06.11.2019 |

Unspecified Tolerances:  
Unless & otherwise specified General  
Tolerances are,  
DIN EN 12020-2

|  |                   |                           |
|--|-------------------|---------------------------|
| <b>PHOENIX MECANO (INDIA) PVT.LTD.</b><br>PUNE - 412115. | Material          | Aluminium 6005 T6 / A6N01 |
|  | Surface Treatment | Anodising                 |

|             |                |
|-------------|----------------|
| Description | Aluminium Pipe |
| Volume      | -              |
| Mass        | -              |
| Scale       | 1:2            |

|             |                |
|-------------|----------------|
| Drawing No. | DV/COM/RK/1103 |
| Detail No.  | -              |

|           |       |
|-----------|-------|
| Color     | -     |
| Unit      | mm    |
| Sheet No. | 1 / 1 |