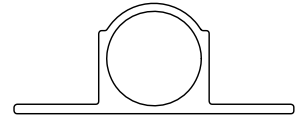
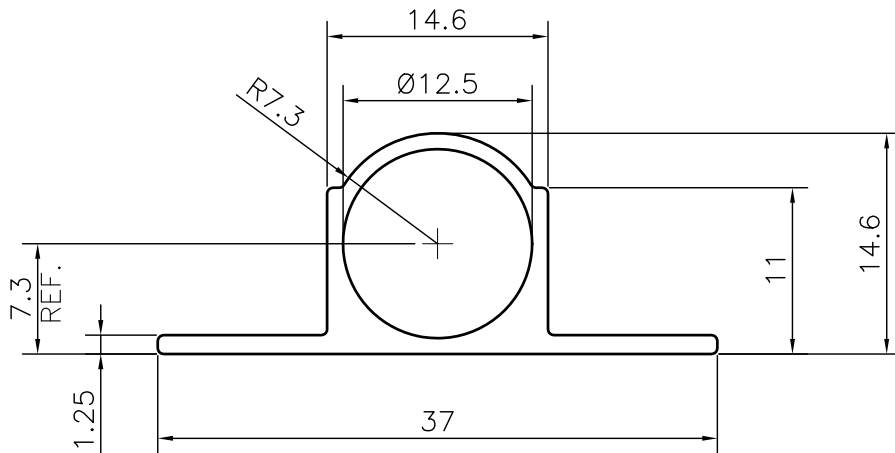


P-JAL-B-334

-




SCALE 1:1



- 1. STRAIGHTNESS= 1.7mm/M
- 2. TWIST= 1.7mm/M
- 3. ANGULARITY= $\pm 2^\circ$
- 4. FLATNESS= 0.007xWIDTH

UNCONTROLLED COPY

1) THE WELDING LINE IN THE EXPOSED SURFACE OF PROFILE IS UNAVOIDABLE. 2) PLEASE SPECIFY IMPORTANT SIZES. 3) PLEASE SPECIFY IF THIS PROFILE MATCHES WITH OTHER PROFILES. 4) PLEASE SPECIFY EXPOSED SURFACE. OTHERWISE CONSIDERED AS NO EXPOSED SURFACE. 5) FINISH :- MILL FINISH / ANODIZING / POWDER COATING

 SYMBOL OF QUALITY AN ISO 9001 COMPANY	JINDAL ALUMINIUM LTD. BHIWADI-301019 (INDIA)		NAME		DATE	
			DRAWN		ASHUTOSH	15-09-2023
			CHECKED			
APPROVED						
1. ALL DIMENSIONS ARE IN mm. 2. ROUND OFF ALL SHARP CORNERS WITH 0.40 mm. 3. TOLERANCES WILL BE AS PER BS:EN-755-9 , UNLESS OTHERWISE SPECIFIED			SCALE		2:1	
			AREA mm ²		97.859	
			PERIMETER mm.		97.134	
			WEIGHT kg/m		0.264	
			DRAWING No.		SECTION No.	
PARTY'S NAME	ALUMINIUM TRADING COMPANY, DELHI		P-JAL-B-334	-		
PARTY'S DRAWING No.	AS PER MAIL - 15.09.2023		-	-		
ALLOY & TEMPER	6063 T6	PRODUCT CODE:-030				
		HSN CODE:- 76042100				
DESCRIPTION	TOWER BOLT SECTION					